



Imaged Document Cover Sheet

The document following this cover sheet is an imaged document supplied by LANDATA®, Secure Electronic Registries Victoria.

Document Type	Cancelled Title
Document Identification	6825/967
Number of Pages (excluding this cover sheet)	10
Document Assembled	09/06/2024 14:35

Copyright and disclaimer notice:

© State of Victoria. This publication is copyright and includes confidential information. No part may be reproduced by any process except in accordance with the provisions of the Copyright Act or pursuant to a written agreement. The State of Victoria does not warrant the accuracy or completeness of the information in this publication and any person using or relying upon such information does so on the basis that the State of Victoria shall bear no responsibility or liability whatsoever for any errors, faults, defects or omissions in the information.

The document is invalid if this cover sheet is removed or altered.



Entered in the Register Book **CANCELLED**

Vol. 6825 Fol. 1364967

28 190

VICTORIA.

Certificate of Title,

UNDER THE "TRANSFER OF LAND ACT 1928."

Robert Wines of Yarra Road Croydon Orchardist is -----
 now the proprietor of an Estate in Fee-simple, subject to the Encumbrances
 notified hereunder in All that piece of Land, delineated and coloured
 red on the map in the margin containing Twenty-four acres One rood Nine perches and
 one-half of a perch or thereabouts being part of Lot 74 on Plan of Subdivision ----
 No.4315 lodged in the Office of Titles and being part of Crown Allotment Eleven^B --
 Parish of Warrandyte County of Evelyn -----

ORIGINAL CERTIFICATE.
Not to be dealt with outside the Titles Office.

Dated the Sixteenth day of October One
 thousand nine hundred and forty-five.

B. H. Minelau

Assistant Registrar of Titles.

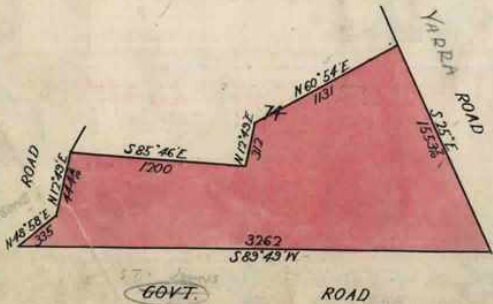
ENCUMBRANCES REFERRED TO.

Accout. L. R. measurements.

7157

~~354~~
LP 34825.

~~77/624~~



T06825-967-1-5

THE WHOLE/OR PART OF
 THE WITHIN LAND HAS
 BEEN SUBDIVIDED SEE
 L.P. 34825 R.1.N°A5074

THE WHOLE/OR PART OF
 THE WITHIN LAND HAS
 BEEN SUBDIVIDED SEE
 Unregistered Plan.....
 Misc. Plan.....
 L.P. 4372 A.N° 432,206

akb

The Measurements are in Links

Delivered on-line by LANDATA®
 This document provides a range of a cancelled folio of the Register. It is not a statement from the register or substituting information in relation to the land to which it refers.
 WARNING

Arthur Cooper of 1 Baldwin Street Armadale

now the proprietor of the within described estate by transfer registered on 15 SEP 1953 and numbered 2587229

J. Douke
Assistant Registrar of Titles

Henri Vincent Triboulet of Street Box Hill Gentleman

now the proprietor of the within described estate by transfer registered on 27 JAN 1955 and numbered 2699538

J. M. Mearns
Assistant Registrar of Titles

CAVEAT No. A223941 LODGED 15th September 1956. Affecting part of the land herein *lots 6, 7.*

CAVEAT LAPSED 20th Jul 1959

TRANSFER AS TO PART No. A101786 registered 20 Jan 1956
CANCELLED AS TO PART See Vol. 8139 Fol. 015

P. Droude
Assistant Registrar of Titles

TRANSFER AS TO PART No. A 377756 registered 30th July 1957

CANCELLED AS TO PART See Vol. 8160 Fol. 811
W. J. J. J.
Assistant Registrar of Titles

CAVEAT No. A382774 LODGED 8th August 1957. Affecting part of the land herein *lot 1.*

CAVEAT LAPSED 16 FEB 1965

CAVEAT No. A382775 LODGED 8th August 1957. Affecting part of the land herein *lot 2.*

CAVEAT LAPSED

TRANSFER AS TO PART No. A 578038 registered 31 July 1958
CANCELLED AS TO PART See Vol. 8191 Fol. 723

Lot 15
Area 1A 0R 0P
P. J. J.
Assistant Registrar of Titles

TRANSFER AS TO PART No. A730954 registered 4 May 1959

CANCELLED AS TO PART See Vol. 8222 Fol. 961

Lots L.P. 34825
Area 1A 0R 31/10 P.



TRANSFER AS TO PART No. A780212 registered 20 July 1959
CANCELLED AS TO PART See Vol. 8236 Fol. 971

lots 6, 7.
Area 2A 1R 7/10 P.



TRANSFER AS TO PART No. A785743^A registered 28 July 1959
CANCELLED AS TO PART See Vol. 8236 Fol. 972

Lot 4
Area 1P 0R 36 3/10 P.



TRANSFER AS TO PART No. A984490 registered 6 June 1960
CANCELLED AS TO PART See Vol. 8263 Fol. 115

Area 1A 0R 19 P



TRANSFER AS TO PART No. B158972 registered 21 February 1961
CANCELLED AS TO PART See Vol. 8307 Fol. 236

Lot 2



TRANSFER AS TO PART No. B340194 registered 21 December 1961
CANCELLED AS TO PART See Vol. 8363 Fol. 957

Area A R P
7-3-1 1/10



TRANSFER AS TO PART No. C26064 registered 4th September 1964
CANCELLED AS TO PART See Vol. 8535 Fol. 910

lot 1, 0R 4 1/10 P



CAVEAT No. L497332 LODGED 25 MAY 1966 Affecting part of the land herein Lot No. 12, 13, 14

CAVEAT LAPSED 22 JAN 1970



STATE ELECTRICITY CORPORATION
has pursuant to section 57 of Transfer of Land Act served a Notification relating to the compulsory acquisition of an easement over land herein.
Dated 30th May 1967
Entered - 5 JUN 1967
No. C 789541
Noted C.T. 1/55 5/11/67
W. W.
(Plan with letter)



For Continuation of Endowment use annexed sheet marked A

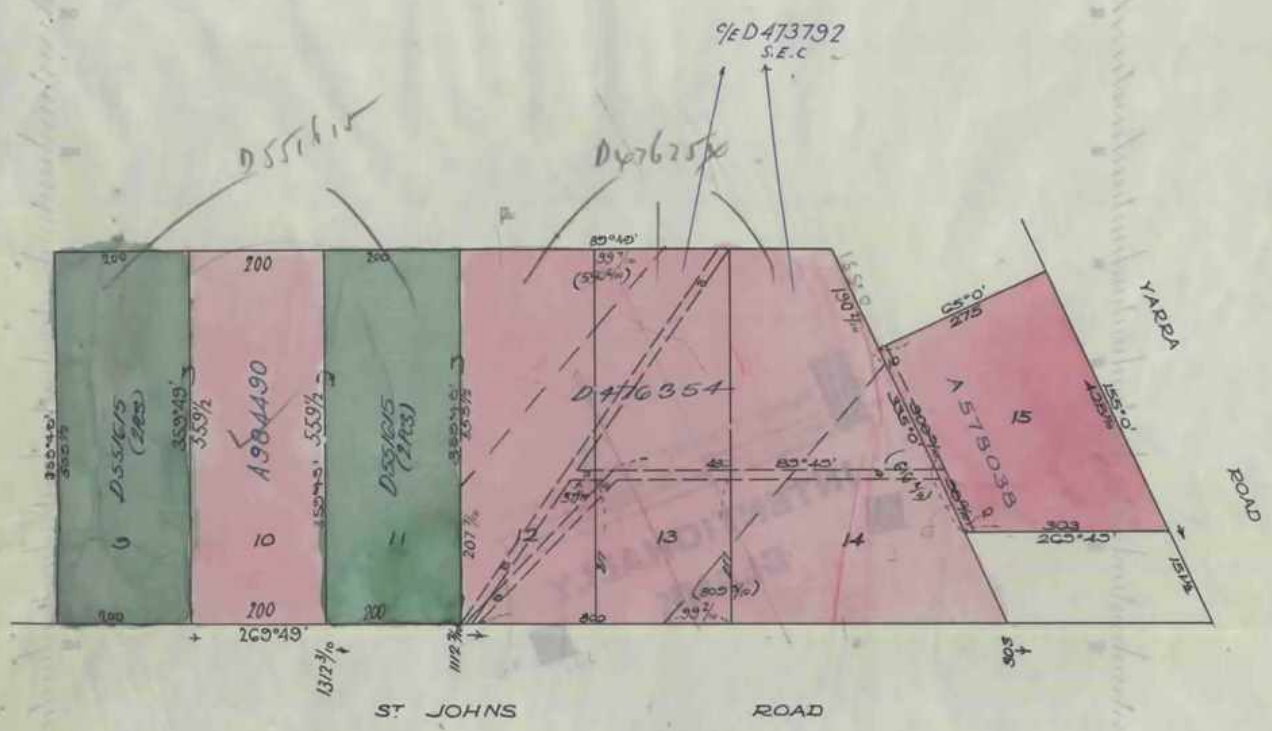


Delivered on-line by LANDATA® This document provides an image of a cancelled folio of the Register. It is not a statement from the register of subsisting information in relation to the land to which it refers.

WARNING

SCALE: 2 Chains to one inch

FD 6825 FD -967



Delivered on-line by LANDATA®

WARNING

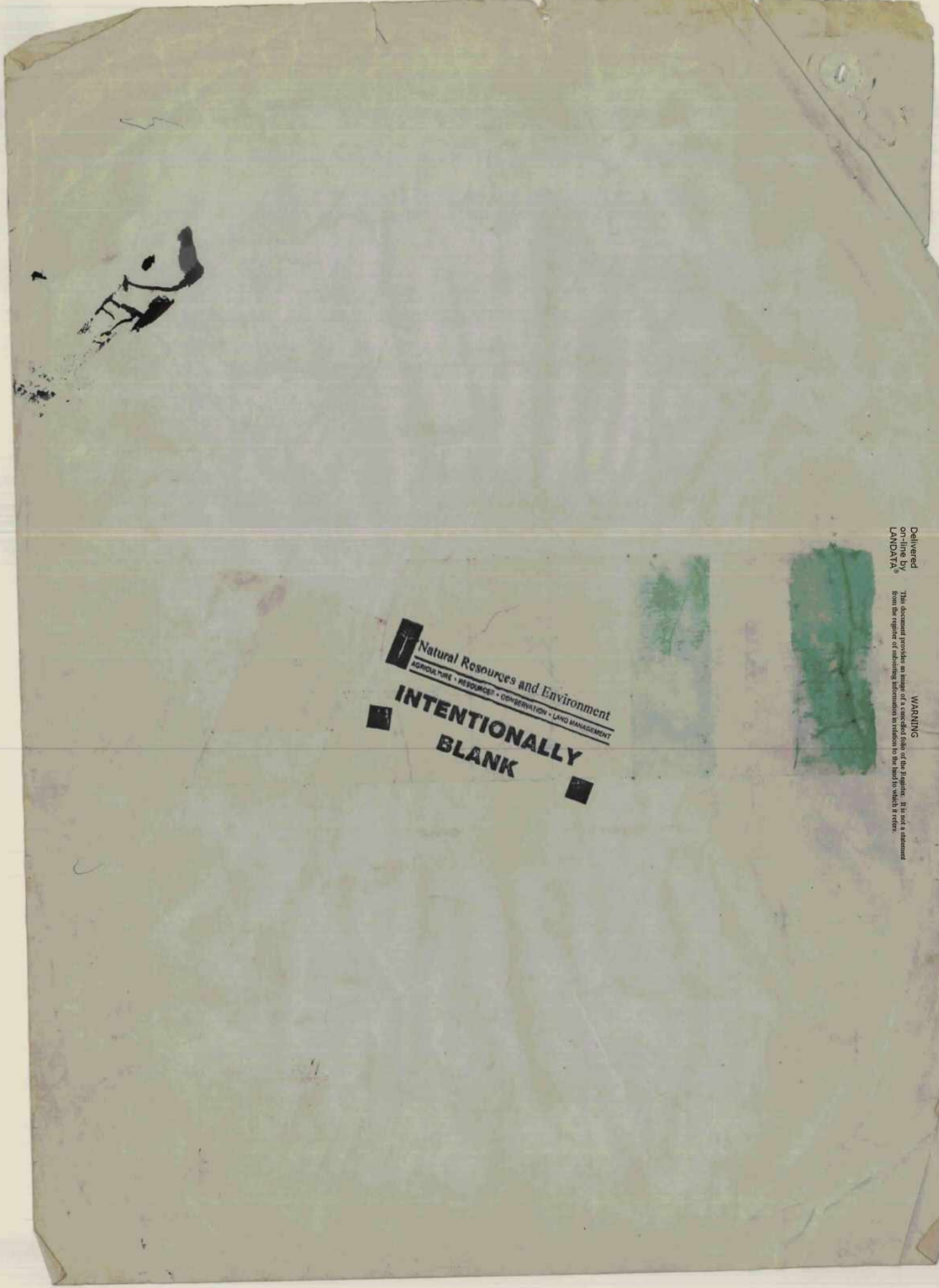
This document provides an image of a scanned folio of the Register. It is not a statement from the register of subsisting information in relation to the land to which it refers.

L.P 43724



SHEET 3

K. B. 13/10/58



Natural Resources and Environment
AGRICULTURE • RESOURCES • CONSERVATION • LAND MANAGEMENT

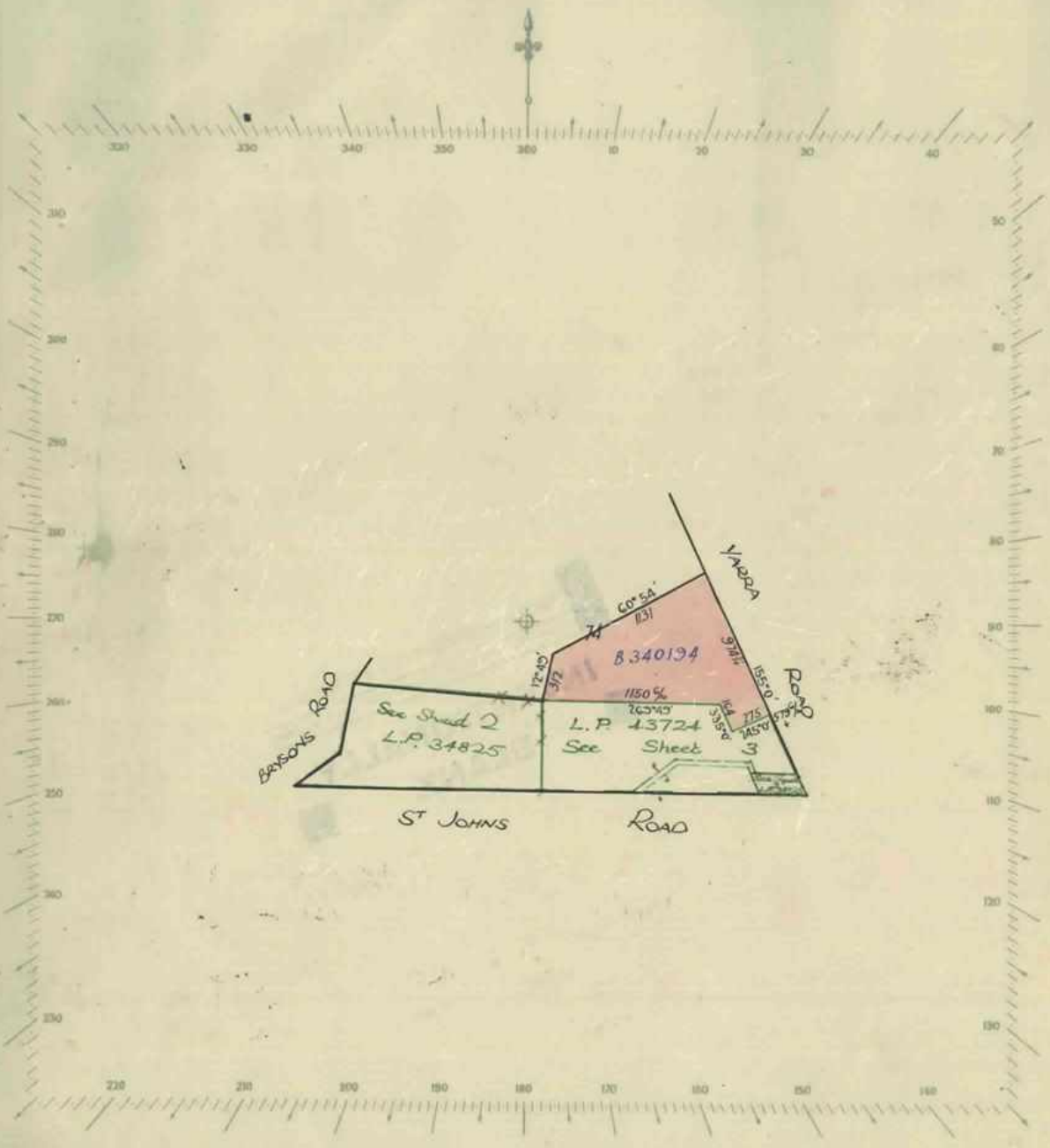
**INTENTIONALLY
BLANK**

Delivered on-line by LANDATA®

WARNING
This document provides an image of a cancelled form of the Register. It is not a statement from the register of subsisting information in relation to the land to which it refers.

SCALE: *chains* to one inch

Vol. *6825* Fol. *-967*

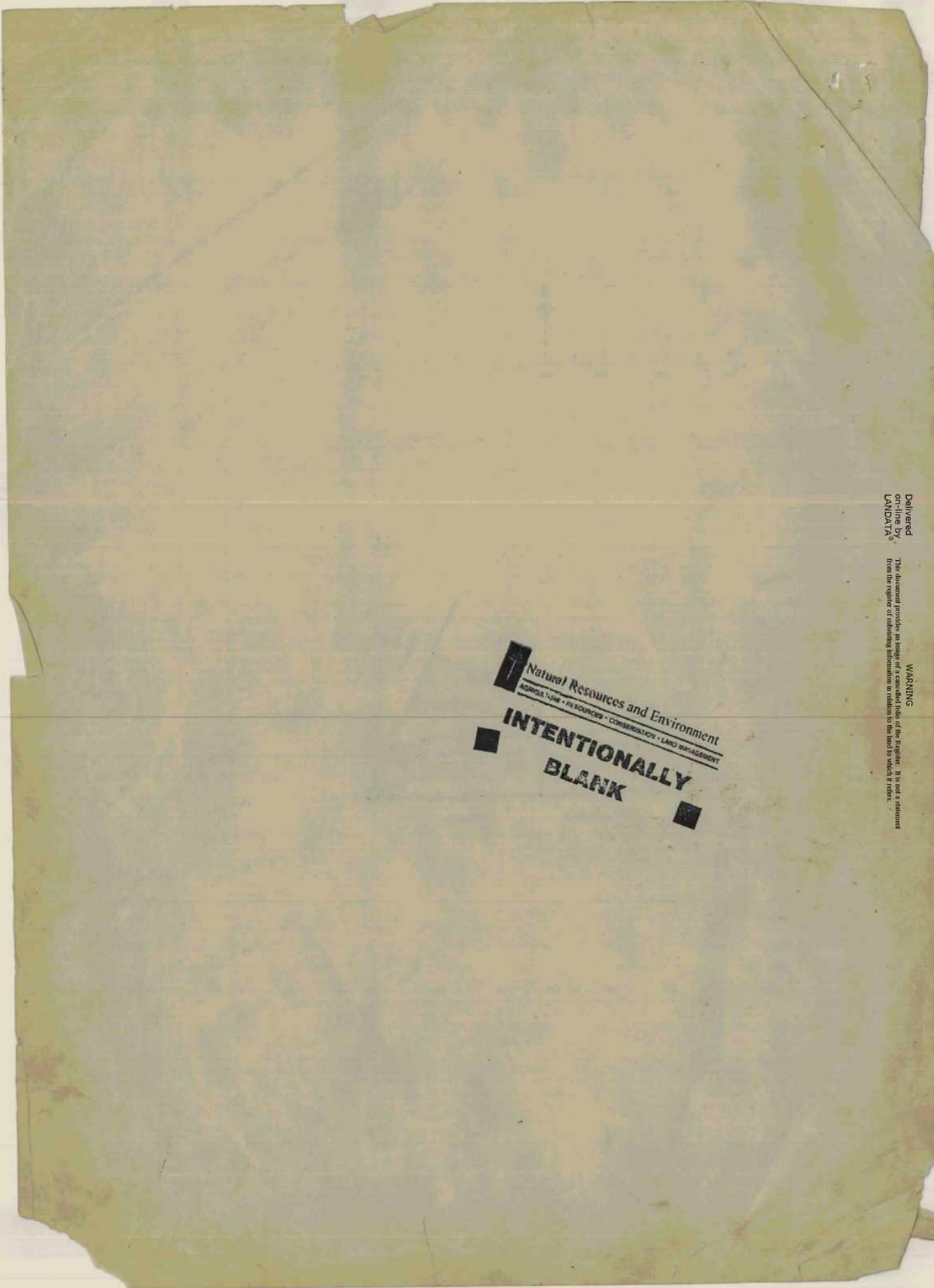


Delivered on-line by LANDATA®

WARNING

This document provides an image of a cancelled folio of the Register. It is not a statement from the register of subsisting information in relation to the land to which it refers.





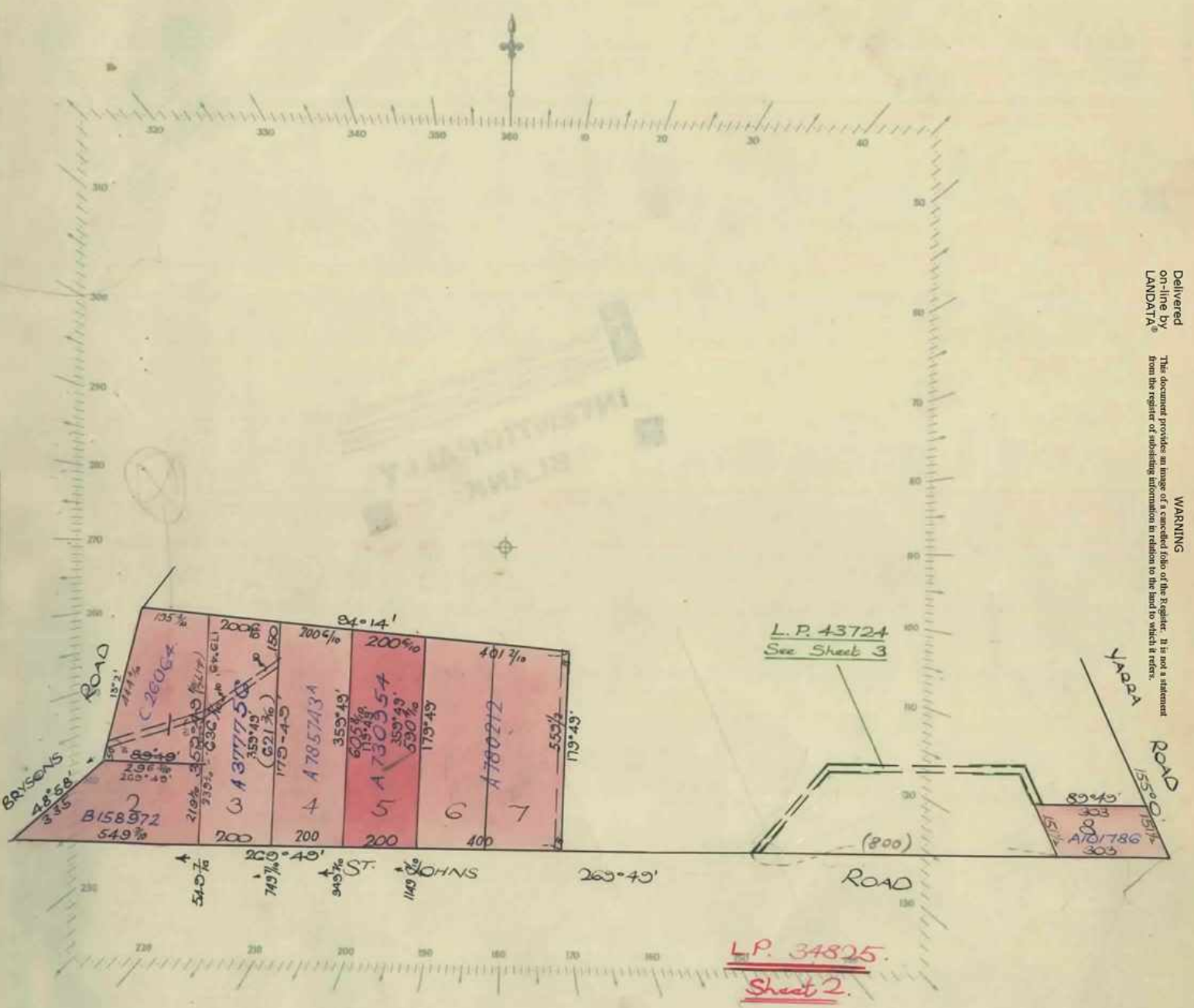
Delivered
on-line by
LANDATA®

WARNING
This document provides an image of a cancelled folio of the Register. It is not a statement
from the register of subsisting information in relation to the land to which it refers.

SCALE: 3 chains to one inch.


Vol. 6825, Fol. -967.

Delivered on-line by LANDATA®
WARNING
This document provides an image of a cancelled folio of the Register. It is not a statement from the register of subsisting information in relation to the land to which it refers.



sk JB
15/5/57



**Natural Resources and Environment**
AGRICULTURE • RESOURCES • CONSERVATION • LAND MANAGEMENT
**INTENTIONALLY
BLANK**

Delivered
on-line by
LANDATA®

WARNING
This document provides an image of a cancelled folio of the Register. It is not a statement
from the register of subsisting information in relation to the land to which it refers.

This is the Sheet marked **A** referred to in the Certificate of Title entered in the Register Book Vol. **6825** Fol. **967**

ORIGINAL



Assistant Registrar of Titles.

STATE ELECTRICITY COMMISSION
 Section 57 of Transfer of Land Act
 and the provisions of the compulsory acquisition
 of an easement under part, herein.
 Dated 9th JUN 1969
 Entered 19 JUN 1969
 No. C 800 434 (Plan with letter)



CREATION OF EASEMENT

Registered 12th August 1969
No. D473792



TRANSFER AS TO PART No. D476354

registered 14th August 1969

CANCELLED AS TO PART

See Vol. 8868 Fol. 863

12, 13, 14 3A 3R 89



TRANSFER AS TO BALANCE No. D551615

registered 5th November 1969

CANCELLED See Vol. 8808 Fol. 864



CANCELLED



106625-867-5-8

Delivered on-line by LANDATA®

WARNING
This document provides an image of a cancelled folio of the Register. It is not a statement from the register or subsisting information in relation to the land to which it refers.

Delivered
on-line by
LANDATA®

WARNING
This document provides an image of a cancelled folio of the Register. It is not a statement
from the register or substituting information in relation to the land to which it refers.