



Imaged Document Cover Sheet

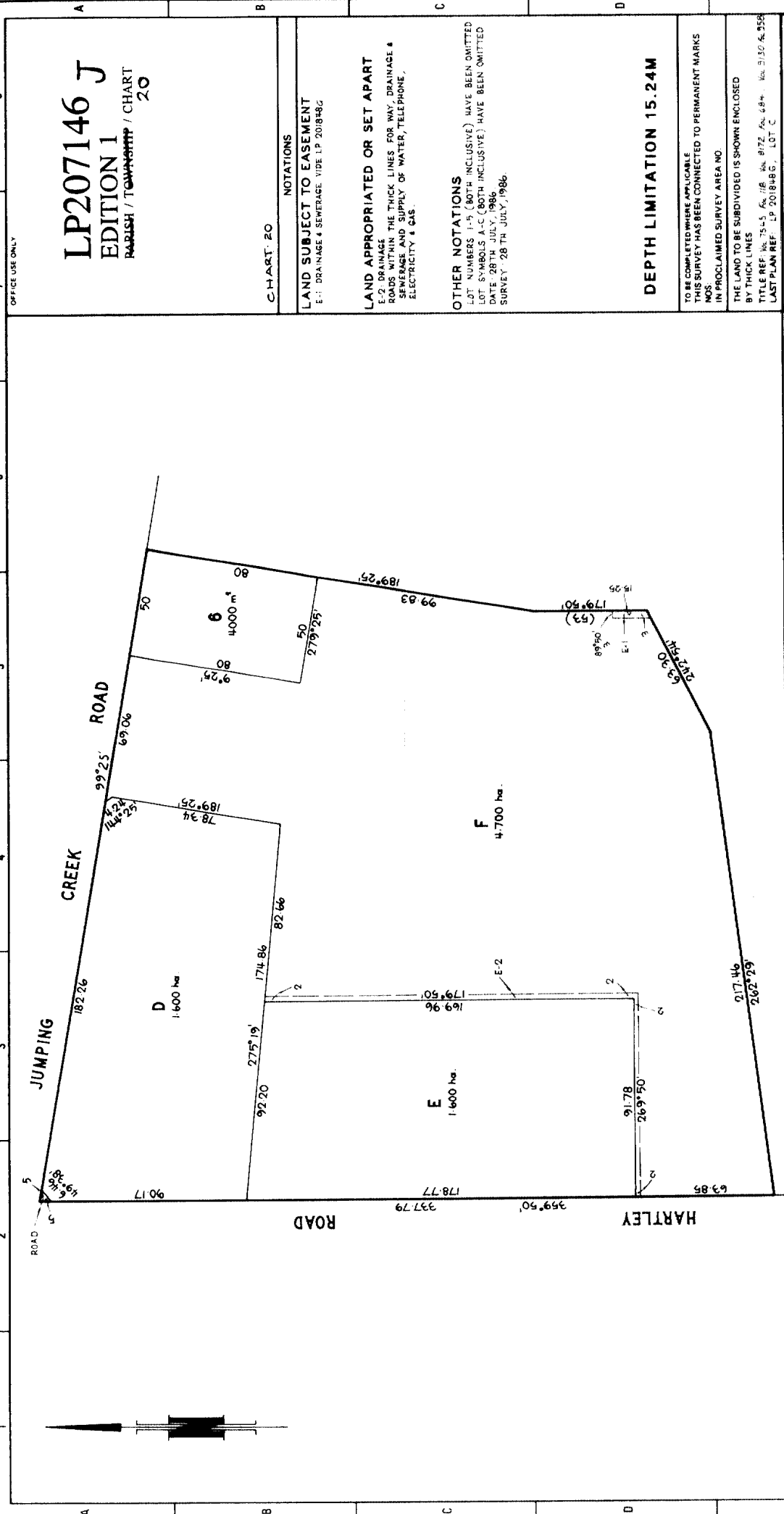
The document following this cover sheet is an imaged document supplied by LANDATA®, Secure Electronic Registries Victoria.

Document Type	Plan
Document Identification	LP207146J
Number of Pages (excluding this cover sheet)	1
Document Assembled	07/08/2024 22:56

Copyright and disclaimer notice:

© State of Victoria. This publication is copyright. No part may be reproduced by any process except in accordance with the provisions of the Copyright Act 1968 (Cth) and for the purposes of Section 32 of the Sale of Land Act 1962 or pursuant to a written agreement. The information is only valid at the time and in the form obtained from the LANDATA® System. None of the State of Victoria, LANDATA®, Secure Electronic Registries Victoria Pty Ltd (ABN 86 627 986 396) as trustee for the Secure Electronic Registries Victoria Trust (ABN 83 206 746 897) accept responsibility for any subsequent release, publication or reproduction of the information.

The document is invalid if this cover sheet is removed or altered.



LP207146 J
EDITION 1
 PARISH / TOWNSHIP / CHART
 20

NOTATIONS
LAND SUBJECT TO EASEMENT
 E-1 DRAINAGE & SEWERAGE VIDE LP 201848G

LAND APPROPRIATED OR SET APART
 E-2 DRAINAGE ROADS WITHIN THE THICK LINES FOR WAY, DRAINAGE & SEWERAGE AND SUPPLY OF WATER, TELEPHONE, ELECTRICITY & GAS

OTHER NOTATIONS
 LOT NUMBERS 1-5 (BOTH INCLUSIVE) HAVE BEEN OMITTED
 LOT SYMBOLS A-C (BOTH INCLUSIVE) HAVE BEEN OMITTED
 DATE 28TH JULY, 1986
 SURVEY 28TH JULY, 1986

DEPTH LIMITATION 15.24M

TO BE COMPLETED WHERE APPLICABLE
 THIS SURVEY HAS BEEN CONNECTED TO PERMANENT MARKS
 IN PROCLAIMED SURVEY AREA NO.

THE LAND TO BE SUBDIVIDED IS SHOWN ENCLOSED
 BY THICK LINES
 TITLE REF. NO. 75-4-5 A/C 118 Vol. 8172 Fol. 68 H. Vol. 8130 A/C 558
 LAST PLAN REF. LP 201848 G, LOT C

PLAN OF SUBDIVISION

COUNTY EVELYN
 PARISH WARRANDYTE
 CROWN ALLOTMENT 9F (PART)

NUMBER OF SHEETS IN PLAN
 NUMBER OF THIS SHEET

SCALE
 ORIGINAL SCALE 1:250
 SCALE OF THIS SHEET 1:250
 LENGTHS ARE IN METRES

LP207146 J

VICTORIA

OFFICE USE ONLY

CERTIFICATE OF MUNICIPAL CLERK

COUNCIL REF.

MUNICIPALITY

CERTIFICATE A

THIS PLAN ACCORDS WITH A PLAN SEALED BY THE COUNCIL UNDER SECTION 569B OF THE LOCAL GOVERNMENT ACT 1988 ON

CONFIRMED BY THE PLANNING APPEALS BOARD ON

AND A REQUIREMENT/NO REQUIREMENT PURSUANT TO SECTION 569E OF THE LOCAL GOVERNMENT ACT 1988 HAS BEEN MADE

DATE

MUNICIPAL CLERK

MUNICIPAL CLERK

DATE

MUNICIPAL CLERK

CERTIFICATE B
 THIS PLAN ACCORDS WITH A PLAN EXEMPTED FROM SUBDIVISION (3) OF DIVISION (8) OF PART XIX OF THE LOCAL GOVERNMENT ACT 1988 BY

THE COUNCIL ON

THE PLANNING APPEALS BOARD ON

DATE

MUNICIPAL CLERK

MUNICIPAL CLERK

PLAN APPROVED AT ON

13 JUL 88

ASSISTANT REGISTRAR OF TITLES

AMENDMENTS

KIRKPATRICK & WEBBER PTY. LTD.
 LAND SURVEYORS & TOWN PLANNERS
 4-C, Macrossan Street, Victoria, 3134
 Telephone (03) 870 4422

SURVEYORS REF
6084N

ONLY CERTIFICATE A OR CERTIFICATE B TO BE COMPLETED
 * DELETE WORDS NOT APPLICABLE

150mm
 1:40 1:30 1:40 1:50mm

1 2 3 4 5 6 7

302146