



# Imaged Document Cover Sheet

The document following this cover sheet is an imaged document supplied by LANDATA®, Secure Electronic Registries Victoria.

Document Type	<b>Plan</b>
Document Identification	<b>LP144640</b>
Number of Pages (excluding this cover sheet)	<b>1</b>
Document Assembled	<b>30/07/2024 22:44</b>

**Copyright and disclaimer notice:**

© State of Victoria. This publication is copyright. No part may be reproduced by any process except in accordance with the provisions of the Copyright Act 1968 (Cth) and for the purposes of Section 32 of the Sale of Land Act 1962 or pursuant to a written agreement. The information is only valid at the time and in the form obtained from the LANDATA® System. None of the State of Victoria, LANDATA®, Secure Electronic Registries Victoria Pty Ltd (ABN 86 627 986 396) as trustee for the Secure Electronic Registries Victoria Trust (ABN 83 206 746 897) accept responsibility for any subsequent release, publication or reproduction of the information.

The document is invalid if this cover sheet is removed or altered.

LP144640

EDITION 1

APPROVED 13/12/83

X

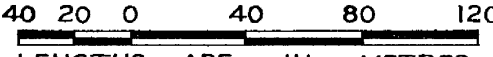
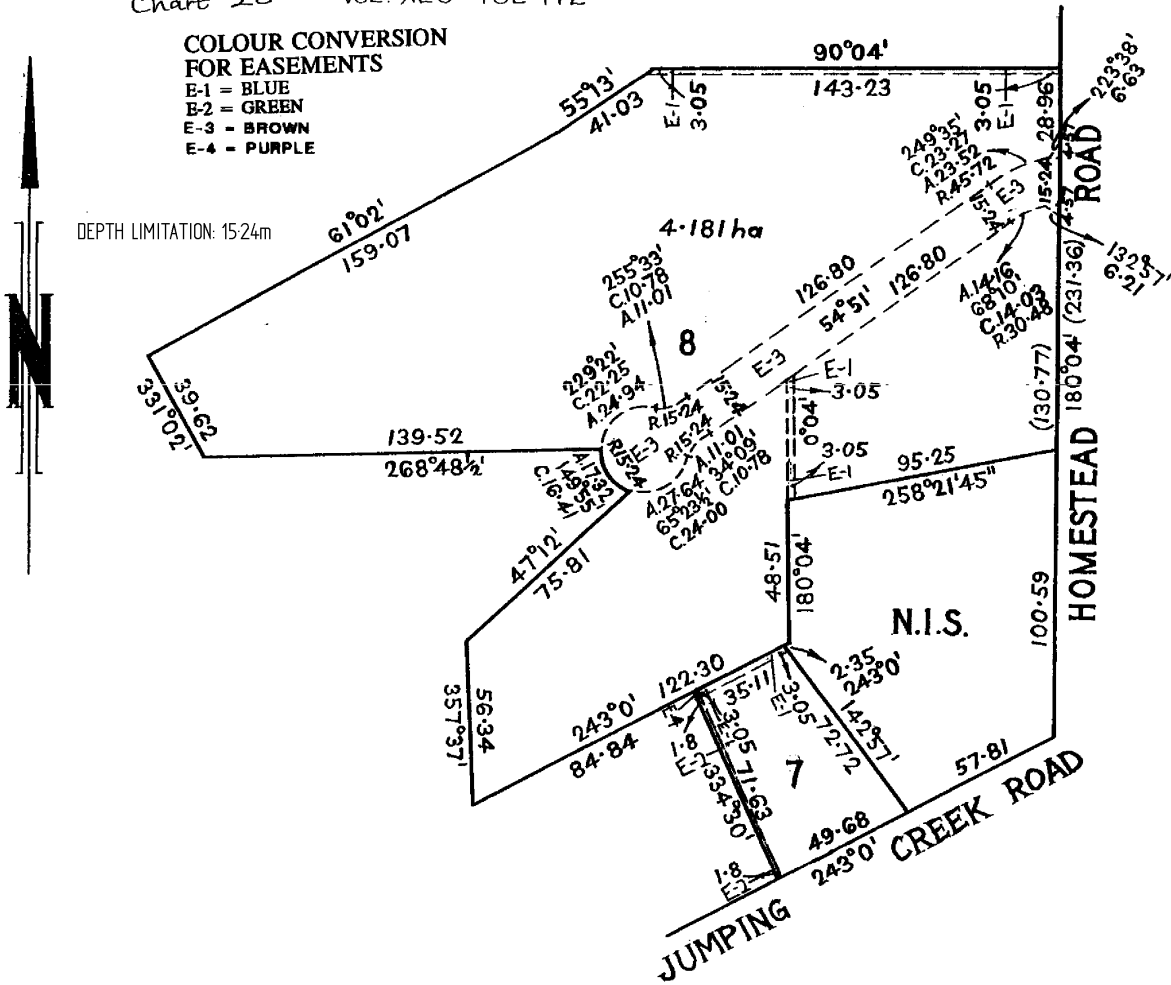
<p><b>PLAN OF SUBDIVISION</b>  <b>OF PART OF CROWN ALLOTMENT 9J</b>  <b>PARISH OF WARRANDYTE</b>  <b>COUNTY OF EVELYN</b></p> <p>SCALE  METRES</p>	<p><b>APPROPRIATIONS</b></p> <p>Purple, Green &amp; Brown - Supply of Electricity.</p>
	<p><b>ENCUMBRANCES &amp; NOTATIONS</b></p> <p>Lot numbers 1 to 6 have been omitted.                  Brown - Way, Drainage &amp; Sewerage.)                  Blue - Drainage &amp; Sewerage.                  Purple - Drainage &amp; Sewerage. } <i>Vide LP.116246</i></p>

Chart 20 VOL.9120 FOL.472



<p><b>CONSENT OF COUNCIL</b></p> <p>The Common Seal of the Council of the Shire of Lillydale was hereunto attached this <u>8th</u> day of <u>December</u> 19<u>80</u> in the presence of</p> <p><u>Alan S. Smith</u> Councillor  <u>Raymond [Signature]</u> Councillor  <u>[Signature]</u> Shire Secretary</p>	<p><b>SURVEYORS CERTIFICATION</b></p> <p>I certify that this plan has been made by me, accords with title and is mathematically correct.</p> <p><u>W. Klitpatrick</u> Licensed Surveyor.</p> <p>29th. day of April, 1980.                  Amended - 7th. August, 1980.                  24th. November, 1980.</p> <p>REF. 5223A</p>
--	--