



Imaged Document Cover Sheet

The document following this cover sheet is an imaged document supplied by LANDATA®, Secure Electronic Registries Victoria.

Document Type	Cancelled Title
Document Identification	7341/059
Number of Pages (excluding this cover sheet)	6
Document Assembled	19/08/2024 22:54

Copyright and disclaimer notice:

© State of Victoria. This publication is copyright and includes confidential information. No part may be reproduced by any process except in accordance with the provisions of the Copyright Act or pursuant to a written agreement. The State of Victoria does not warrant the accuracy or completeness of the information in this publication and any person using or relying upon such information does so on the basis that the State of Victoria shall bear no responsibility or liability whatsoever for any errors, faults, defects or omissions in the information.

The document is invalid if this cover sheet is removed or altered.



Entered in the Register Book

CANCELLED

Vol. 7341 Fol. 1468059

VICTORIA.

13/4/50 R

Certificate of Title,

UNDER THE "TRANSFER OF LAND ACT 1928."

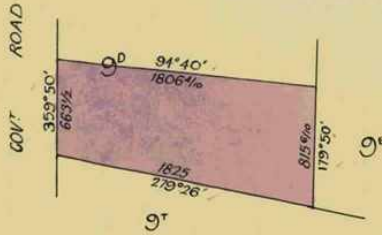
Joseph Henry Hartley of Wonga Park Labourer is -----
now the proprietor of an Estate in Fee simple, subject to the Encumbrances
notified hereunder in All the piece of Land delineated and coloured
the surface and down to the depth of Fifty feet below the surface of ALL THAT -
piece of land delineated and coloured purple on the map in the margin containing-
Thirteen acres One rood and Ten perches or thereabouts being part of Crown ----
Allotment Nine^D Parish of Warrandyte County of Evelyn -----

ORIGINAL CERTIFICATE.
Not to be dealt with outside the Titles Office.

Dated the Thirtieth day of August One
thousand nine hundred and forty-nine.

J. P. ...
Assistant Registrar of Titles.

ENCUMBRANCES REFERRED TO.



77/531

Adopt L.P. measurements RCB
9.12.57

THE WHOLE OR PART OF
THE WITHIN LAND HAS
BEEN SUBDIVIDED AND
Unregistered Plan.....
Misc. Plan
L.P. 38302 No A 313199

... ..
The Measurements are in links



Delivered on-line by LANDATA®
This document provides an image of a cancelled folio of the Register. It is not a statement from the register of subsisting information in relation to the land to which it refers.

WARNING

Vol. 3531 Fol. 706110

Transfer. 2245506

Application.

~~Caveat A384677 Plan - Jm~~

TRANSFER AS TO PART No. A 353628

registered 18 June 1957

CANCELLED AS TO PART See Vol. 8165 Fol. 403

Area 6A 2R 21^P

W. J. ...
Assistant Registrar of Titles

TRANSFER AS TO PART No. A 353629

registered 18 June 1957

CANCELLED AS TO PART See Vol. 8165 Fol. 404

Area 2A 0R 17^P

W. J. ...
Assistant Registrar of Titles

CAVEAT No. A384677 LODGED 12th August 1957
Affecting part of the land herein *Plan.*

CAVEAT LAPSED 4th December 1958 *Lgd*

TRANSFER AS TO BALANCE No. A654049

registered 4 December 1958

CANCELLED See Vol. 8216 Fol. 556



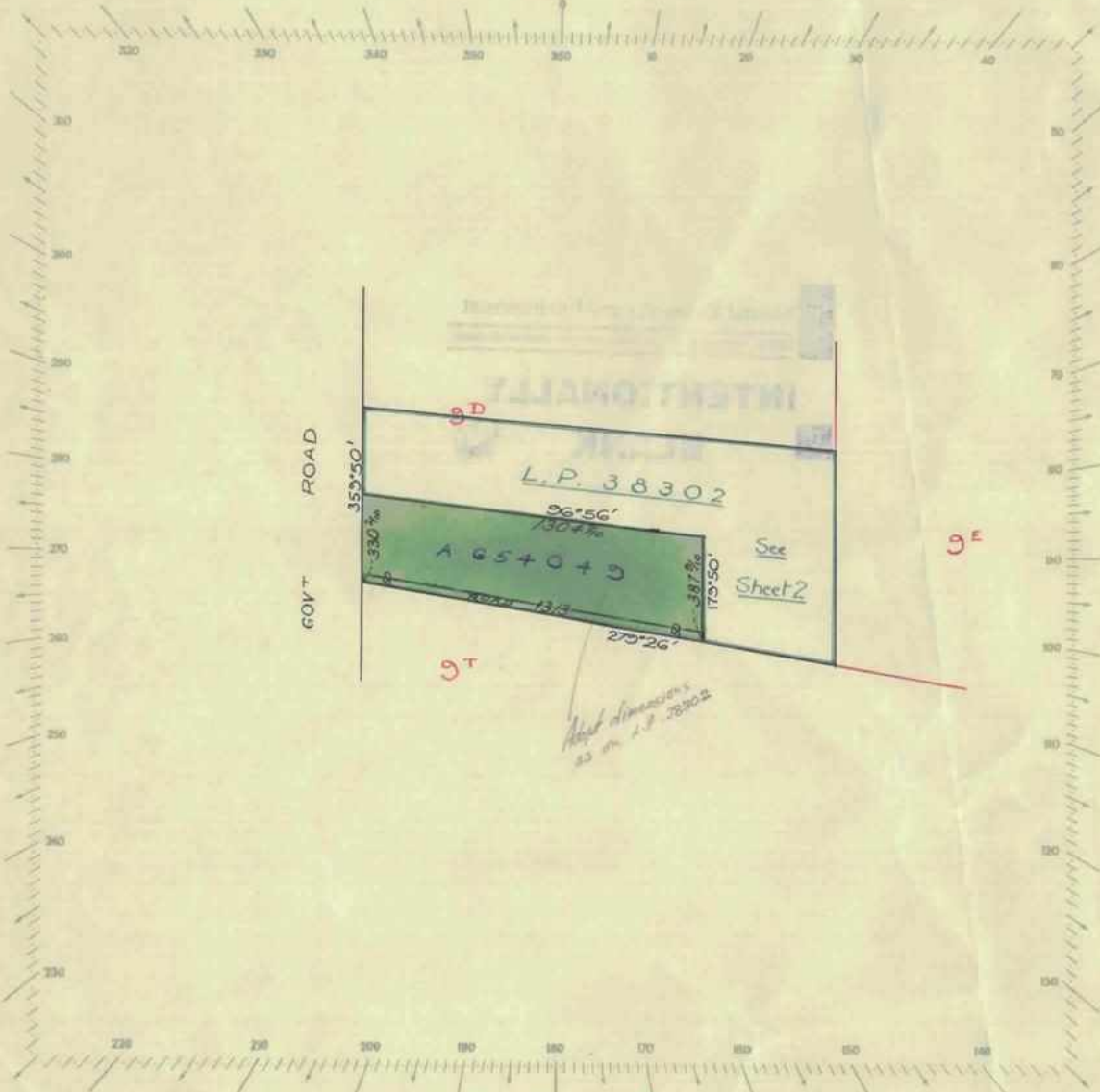
CANCELLED

DUP. WITH

15 AUG 1958

SCALE: 500 Links to one inch

Vol. 7341 Fol. -059



Delivered on-line by LANDATA®

WARNING

This document provides an image of a cancelled folio of the Register. It is not a statement from the register or substituting information in relation to the land to which it refers.




Sheet 1

BBB
28/1/59

Delivered
on-line by
LANDATA®

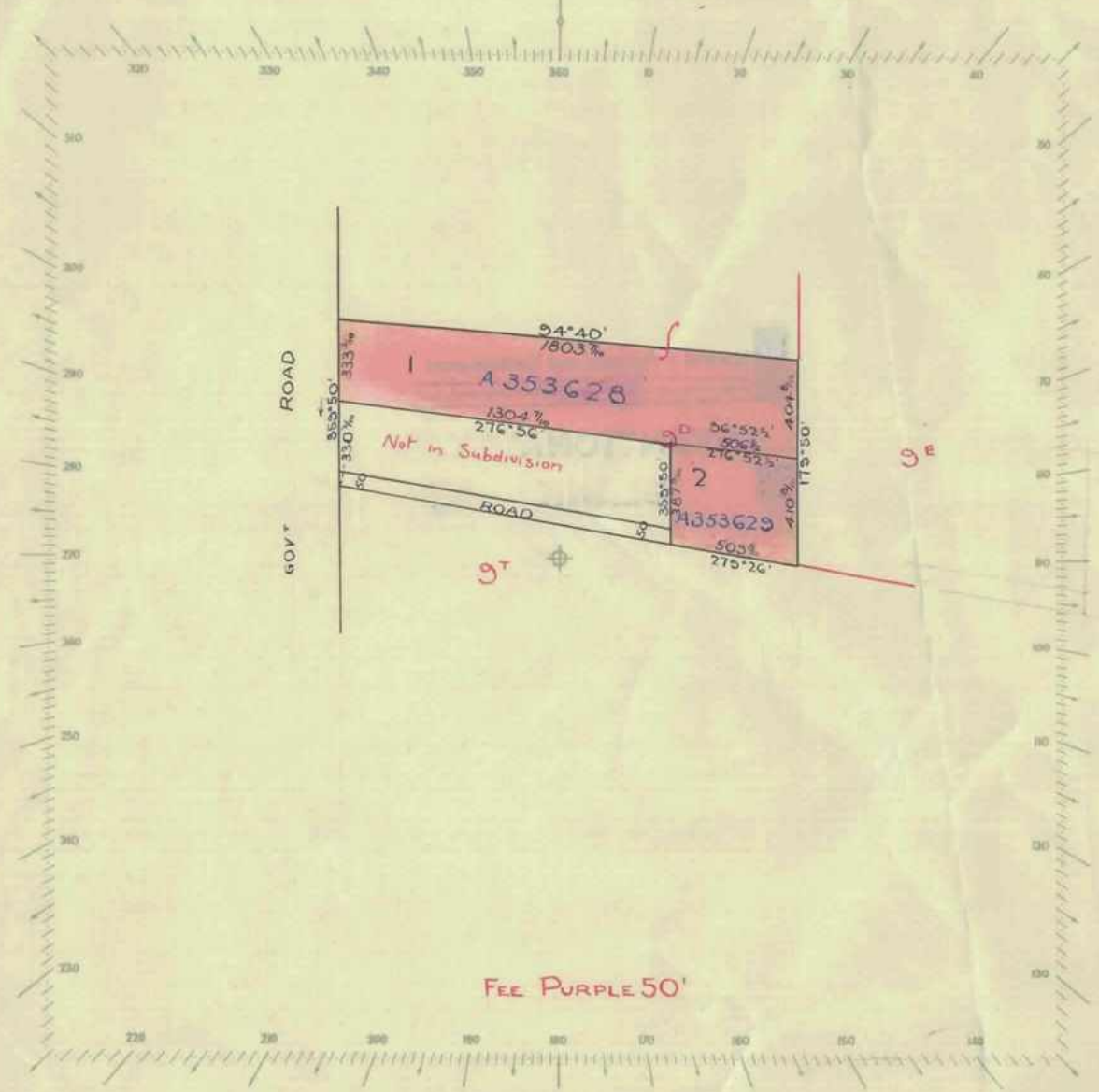
WARNING
This document provides an image of a cancelled folio of the Register. It is not a statement
from the register of subsisting information in relation to the land to which it refers.

 **Natural Resources and Environment**
AGRICULTURE • RESOURCES • CONSERVATION • LAND MANAGEMENT

**INTENTIONALLY
BLANK** 

SCALE: 5 Chains to one inch.

Vol. 7341 Fol. ~059



Delivered
on-line by
LANDATA®

WARNING
This document provides an image of a cancelled folio of the Register. It is not a statement
from the register of subsisting information in relation to the land to which it refers.

WARNING

L.P. 38302

Sheet 2




T07341-059-3-3

Handwritten initials and date: 28/1/58

Delivered
on-line by
LANDATA®

WARNING
This document provides an image of a cancelled folio of the Register. It is not a statement
from the register of subsisting information in relation to the land to which it refers.

**Natural Resources and Environment**
AGRICULTURE • RESOURCES • CONSERVATION • LAND MANAGEMENT

INTENTIONALLY
BLANK