



Imaged Document Cover Sheet

The document following this cover sheet is an imaged document supplied by LANDATA®, Secure Electronic Registries Victoria.

Document Type	Cancelled Title
Document Identification	8165/403
Number of Pages (excluding this cover sheet)	4
Document Assembled	19/08/2024 22:47

Copyright and disclaimer notice:

© State of Victoria. This publication is copyright and includes confidential information. No part may be reproduced by any process except in accordance with the provisions of the Copyright Act or pursuant to a written agreement. The State of Victoria does not warrant the accuracy or completeness of the information in this publication and any person using or relying upon such information does so on the basis that the State of Victoria shall bear no responsibility or liability whatsoever for any errors, faults, defects or omissions in the information.

The document is invalid if this cover sheet is removed or altered.

ORIGINAL

**NOT TO BE TAKEN FROM
THE OFFICE OF TITLES**



VICTORIA

Entered in the Register Book

CANCELLED

Vol. 8165 Fol. 403

Certificate of Title

UNDER THE "TRANSFER OF LAND ACT 1954"

12.
19.3.58.

Leslie Joseph William Hartley of Wonga Park Labourer is -----
 now the proprietor -----
 of an Estate in Fee-simple subject to the Encumbrances notified hereunder in
 so much as lies above the depth of Fifty feet below the surface of ---
 All that piece of Land, delineated and coloured purple on the map in the --
 margin containing Six acres Two roods and Twenty-one perches or thereabouts being --
 Lot One on Plan of Subdivision No.38302 lodged in the Office of Titles and being --
 part of Crown Allotment 9^D Parish of Warrandyte -----

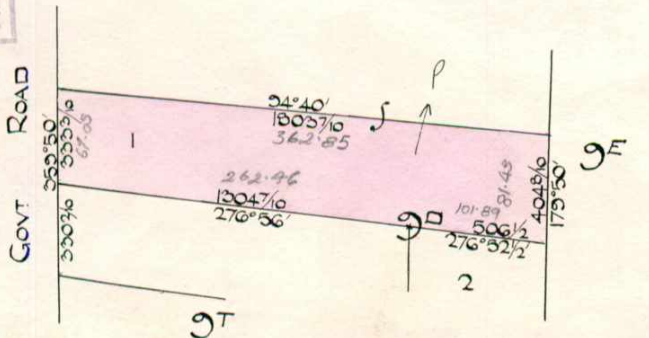
Dated the Eighteenth day of June One
 thousand nine hundred and fifty-seven.

W.P. Fitzgerald
 Assistant Registrar of Titles



ENCUMBRANCES REFERRED TO

PLAN 9/5 131435
AFFECTS LAND HEREIN



$A = 6^{\circ} 2^{\circ} 21''$

THE MEASUREMENTS ARE IN LINKS.

Delivered
on-line by
LANDATA®

WARNING
This document provides an image of a cancelled folio of the Register. It is not a statement
from the register of subsisting information in relation to the land to which it refers.

CAVEAT No. 8396241 LODGED - 4 APR 1962
CAVEAT LAPSED 23 JUL 1973



CAVEAT No. 8423764 LODGED 21 MAY 1962

CAVEAT LAPSED 31 AUG 1973

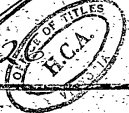


DENIS WILLIAM TURNER Engineer and IRENE
MAY TURNER Married Woman both of Hartley
Road Wonga Park are now JOINT PROPRIETORS
Registered 28th June 1973
No. E876322



MORTGAGE TO BANK OF NEW SOUTH WALES

Registered 30th MAY 1974
No. 30632



MORTGAGE TO THE NATIONAL BANK OF AUSTRALIA LIMITED

16th Oct 1980
J 195230

Registered 17 APR 1980
No. G10062



TRANSFER AS TO PART No. J 195230
Registered 16th October 1980
CANCELLED AS TO PART
see Vol. 9394 Fol. 729 and 730



TRANSFER AS TO BALANCE No. K688513
registered 21st December 1983
CANCELLED see Vol. 9541 Fol. 560



CANCELLED



T08165 F 403

Delivered by LANDATA®
This document provides an electronic representation of the original document. It is not a substitute for the original document. For more information, please contact the Registrar of Titles.

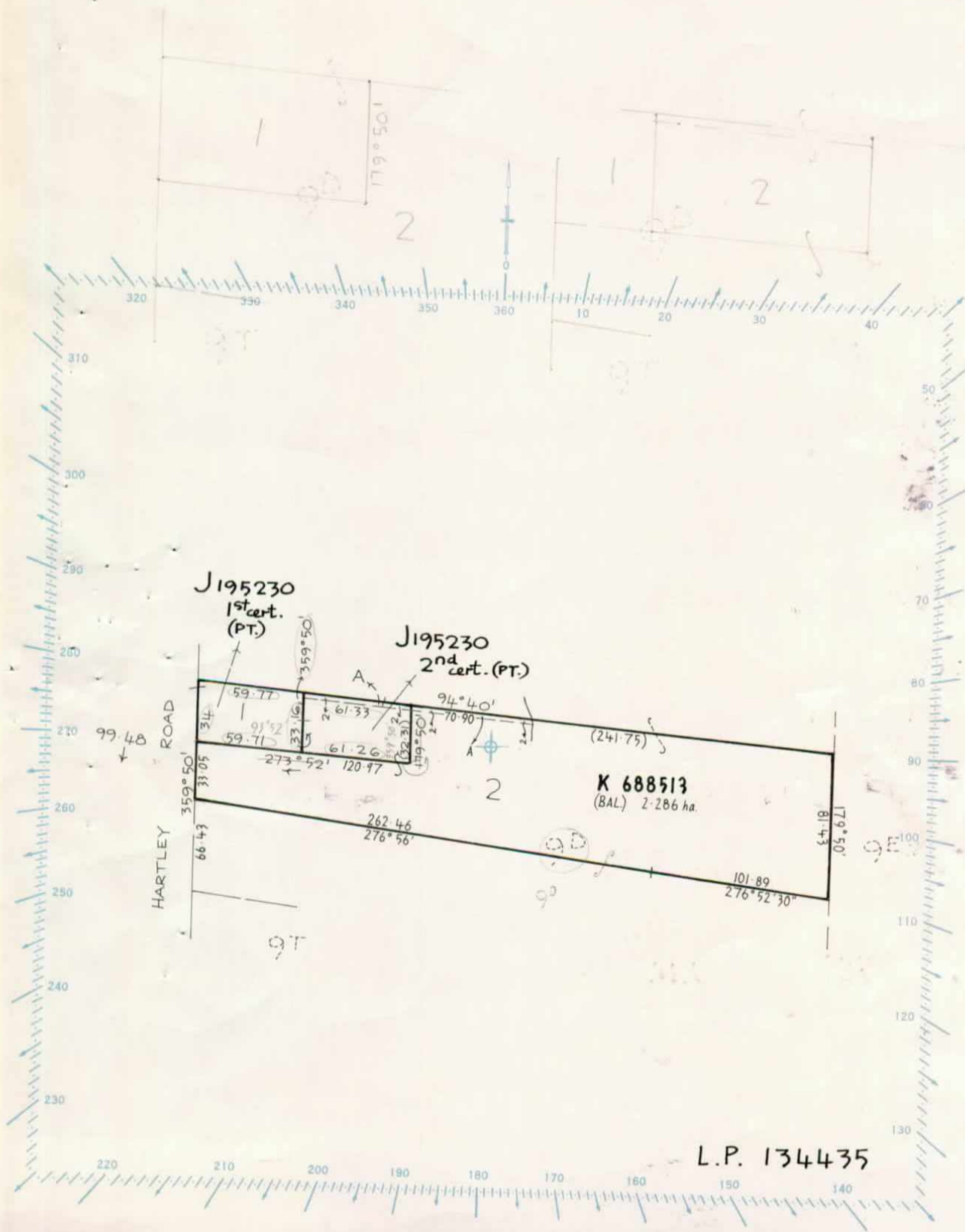
SCALE 1:2500

Volume 8165 Folio 403

LENGTHS ARE IN METRES

Delivered
on-line by
LANDATA®

WARNING
This document provides an image of a cancelled folio of the Register. It is not a statement
from the register of subsisting information in relation to the land to which it refers.



Delivered
On-line by
LANDATA®

WARNING
This document provides a summary of a cancelled sale of the register. It is not a statement
from the register of companies information in relation to any fund or which is not a

