



Imaged Document Cover Sheet

The document following this cover sheet is an imaged document supplied by LANDATA®, Secure Electronic Registries Victoria.

Document Type	Cancelled Title
Document Identification	8563/388
Number of Pages (excluding this cover sheet)	2
Document Assembled	29/08/2024 15:44

Copyright and disclaimer notice:

© State of Victoria. This publication is copyright and includes confidential information. No part may be reproduced by any process except in accordance with the provisions of the Copyright Act or pursuant to a written agreement. The State of Victoria does not warrant the accuracy or completeness of the information in this publication and any person using or relying upon such information does so on the basis that the State of Victoria shall bear no responsibility or liability whatsoever for any errors, faults, defects or omissions in the information.

The document is invalid if this cover sheet is removed or altered.

ORIGINAL

NOT TO BE TAKEN FROM THE OFFICE OF TITLES



CANCELLED REGISTER BOOK

VOL. 8563 FOL. 388

Certificate of Title

UNDER THE "TRANSFER OF LAND ACT"

THOMAS EDWARD NEVILLE PAYNE of Woodburn Kilmore Farmer (to whom Probate of the Will of ARTHUR ERNEST TYNDALL PAYNE deceased has been granted for his life) is now the proprietor of an estate in fee simple subject to the -- encumbrances notified hereunder in ALL THAT piece of land delineated and coloured red on the map in the margin containing Fourteen acres Three roods and Thirty-three perches or thereabouts being part of Crown Allotment 7^B Parish of Warrandyte County of Evelyn -----

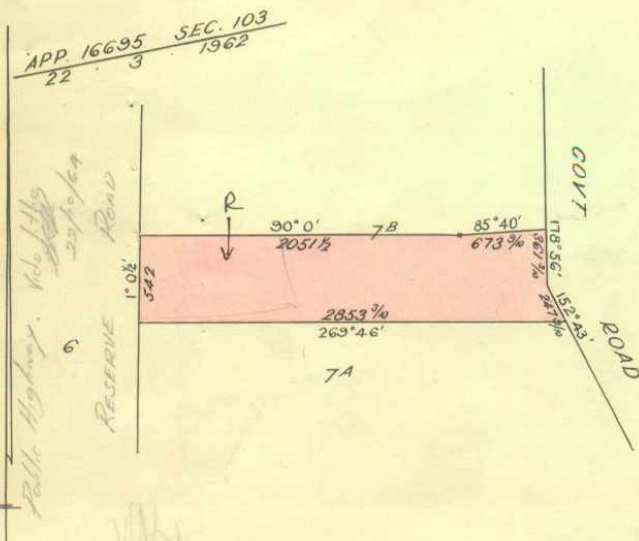
DATED the 22nd day of March 1962

Wasthara

Assistant Registrar of Titles



ENCUMBRANCES REFERRED



THE WHOLE OR PART OF THE WITHIN LAND HAS BEEN SUBDIVIDED SEE Unregistered Plan 80-345
 Misc. Plan _____
 L.P. 58880

SK Seen 82.53/458

MEASUREMENTS ARE IN LINKS

Derived from Vol. 3060 Fol. 953

B607311

388 FOL. 8563 VOL.

Delivered on-line by LANDATA® This document provides an image of a cancelled folio of the Register. It is not a statement from the register of subsisting information in relation to the land to which it refers.

WARNING

TRANSFER AS TO PART No. *B387638*

registered *22nd March 1962*

CANCELLED AS TO PART

See Vol. *8563* Fol. *389*

Lot one area 6 A, R 36^P



TRANSFER AS TO BALANCE No. *B445805*

registered *21st June 1962*

CANCELLED See Vol. *8563* Fol. *390*



CANCELLED

**CANCELLED
DUP. WITH**

29 JUL 1965

Delivered on-line by LANDATA®
This document provides an image of a cancelled folio of the Register. It is not a statement from the register of land and information in relation to that land to which it refers.
WARNING