



# Imaged Document Cover Sheet

The document following this cover sheet is an imaged document supplied by LANDATA®, Secure Electronic Registries Victoria.

Document Type	<b>Cancelled Title</b>
Document Identification	<b>8302/691</b>
Number of Pages (excluding this cover sheet)	<b>4</b>
Document Assembled	<b>12/11/2024 23:31</b>

**Copyright and disclaimer notice:**

© State of Victoria. This publication is copyright and includes confidential information. No part may be reproduced by any process except in accordance with the provisions of the Copyright Act or pursuant to a written agreement. The State of Victoria does not warrant the accuracy or completeness of the information in this publication and any person using or relying upon such information does so on the basis that the State of Victoria shall bear no responsibility or liability whatsoever for any errors, faults, defects or omissions in the information.

The document is invalid if this cover sheet is removed or altered.

**ORIGINAL**

**NOT TO BE TAKEN FROM THE OFFICE  
OF TITLES**



VICTORIA

REGISTER BOOK  
VOL. 8302 FOL. 691

# Certificate of Title

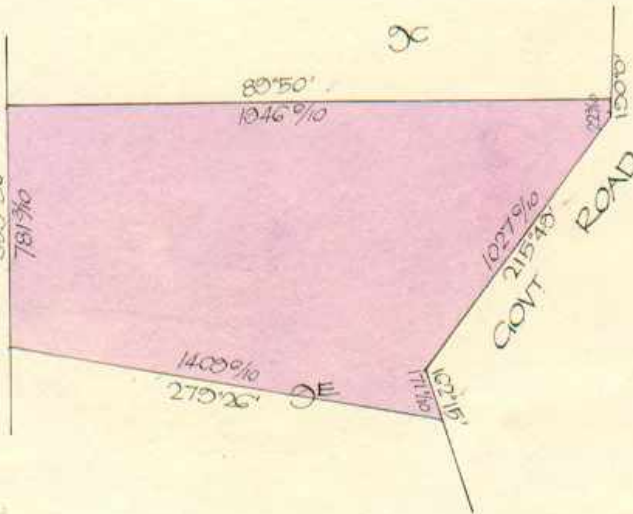
UNDER THE "TRANSFER OF LAND ACT"

HORACE FREDERICK GEORGE BURCH Orchardist and LILY MARSHALL BURCH Married  
 Woman both of Yarra Road Wonga Park are now the joint proprietors of an  
 estate in fee simple subject to the encumbrances notified hereunder in so  
 much as lies above the depth of fifty feet below the surface of ALL THAT -  
 piece of land delineated and coloured purple on the map in the margin - -  
 containing Fourteen acres Two roods and Twenty-six perches or thereabouts  
 being part of Crown Allotment 9<sup>E</sup> Parish of Warrandyte - - - - -

DATED the 12th day of October 1960

*Cronin*

Assistant Registrar of Titles  
ENCUMBRANCES REFERRED TO



... measurements are in links

Derived from Vol.6541 Fol.073  
B78334

Delivered  
on-line by  
LANDATA®

WARNING  
This document provides an image of a cancelled folio of the Register. It is not a statement  
from the register of subsisting information in relation to the land to which it refers.

VOL. 8302 FOL. 691

THE WHOLE OR PART OF  
THE WITHIN LAND HAS  
BEEN SUBDIVIDED SEE  
Unregistered Plan 62552

Misc. Plan  
L.P. 62552

**CANCELLED**

Pursuant to Regulation 12 and Titles  
issued as set out hereunder, on 23 JANUARY 1964  
LOTS 1 AND 2 BEING VOL 8489 FOL 676  
AND " " " " 677

P/S 62552



Delivered  
on-line by  
LANDATA®

WARNING  
This document provides an image of a cancelled folio of the Register. It is not a statement  
from the register of subsisting information in relation to the land to which it refers.

**CANCELLED**

**CANCELLED  
DUP. WITH**

5-3 FEB 1964



T08302-691-1-0

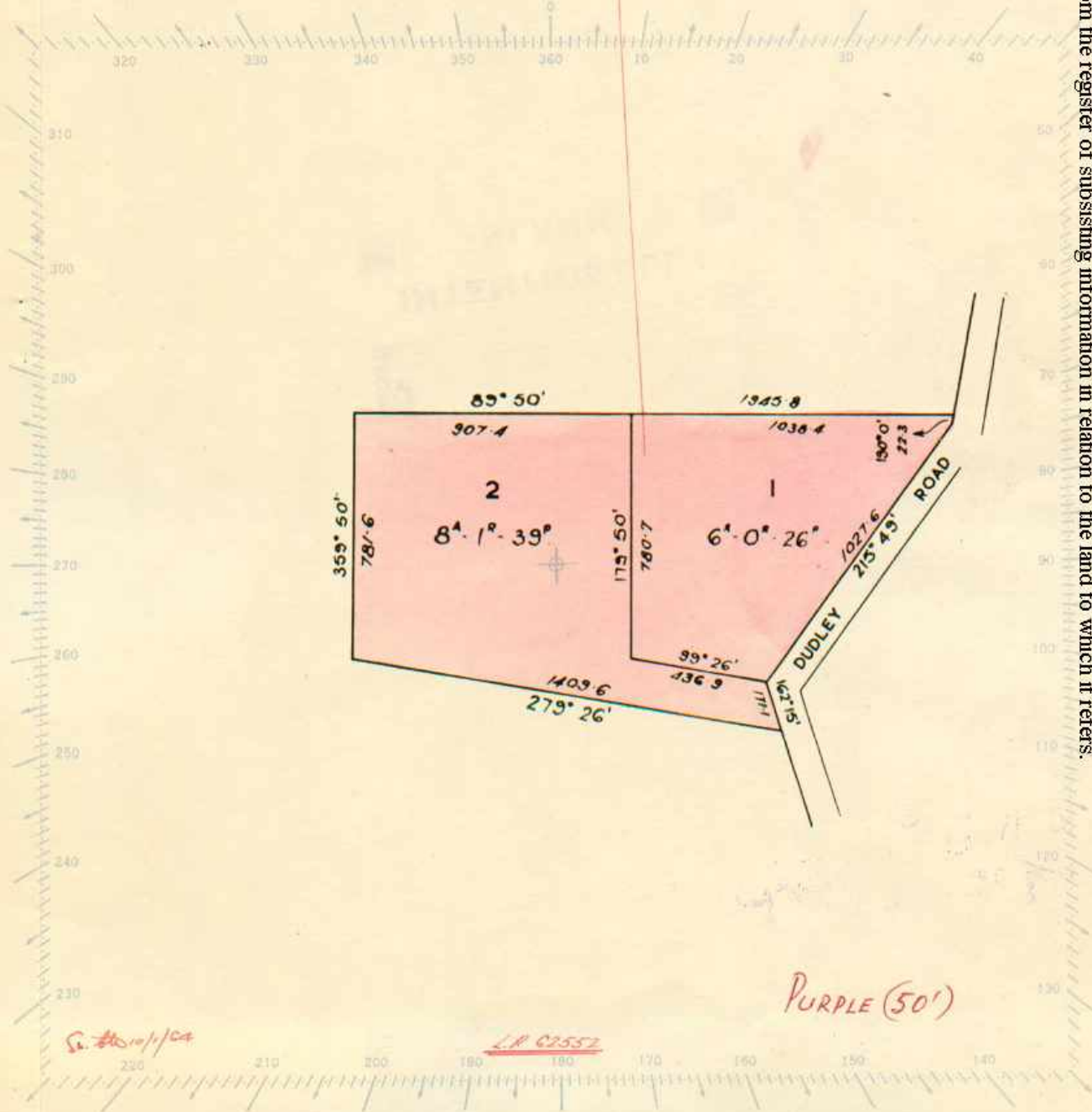
SCALE: \_\_\_\_\_ to one inch

Volume 8302 Folio 691

L.P. 62552 CANCELS THIS TITLE  
BEING BOTH LOTS ON SAID L.P.  
2 CERTS. TO ISSUE

Delivered  
on-line by  
LANDATA®

WARNING  
This document provides an image of a cancelled folio of the Register. It is not a statement from the register of subsisting information in relation to the land to which it refers.



Delivered  
on-line by  
LANDATA®

WARNING  
This document provides an image of a cancelled folio of the Register. It is not a statement  
from the register of subsisting information in relation to the land to which it refers.

5 6

**INTENTIONALLY  
BLANK**

**Natural Resources and Environment**  
AGRICULTURE • RESOURCES • CONSERVATION • LAND MANAGEMENT

