



# Imaged Document Cover Sheet

The document following this cover sheet is an imaged document supplied by LANDATA®, Secure Electronic Registries Victoria.

|   |                         |
|---|-------------------------|
| Document Type                                   | <b>Cancelled Title</b>  |
| Document Identification                         | <b>8459/676</b>         |
| Number of Pages<br>(excluding this cover sheet) | <b>4</b>                |
| Document Assembled                              | <b>13/11/2024 15:21</b> |

**Copyright and disclaimer notice:**

© State of Victoria. This publication is copyright and includes confidential information. No part may be reproduced by any process except in accordance with the provisions of the Copyright Act or pursuant to a written agreement. The State of Victoria does not warrant the accuracy or completeness of the information in this publication and any person using or relying upon such information does so on the basis that the State of Victoria shall bear no responsibility or liability whatsoever for any errors, faults, defects or omissions in the information.

The document is invalid if this cover sheet is removed or altered.

**ORIGINAL**

**NOT TO BE TAKEN FROM THE OFFICE OF TITLES**



VICTORIA

**CANCELLED**

REGISTER BOOK

VOL. 8459 FOL. 676

# Certificate of Title

UNDER THE "TRANSFER OF LAND ACT"

HORACE FREDERICK GEORGE BURCH Orchardist and LILY MARSHALL BURCH - - - -  
Married Woman both of Yarra Road Wonga Park are the joint proprietors -  
of an estate in fee simple subject to the encumbrances notified hereunder -  
in so much as lies above the depth of Fifty feet below the surface of - - -  
ALL THAT piece of land coloured on the map hereon being Lot 1 on Plan of -  
Subdivision No.62552 Parish of Warrandyte - - - - -

Issued under Regulation 12 on the approval of the above Plan of Subdivision

VOL. 8459 FOL. 676

Delivered on-line by LANDATA®

WARNING  
This document provides an image of a cancelled folio of the Register. It is not a statement from the register of subsisting information in relation to the land to which it refers.

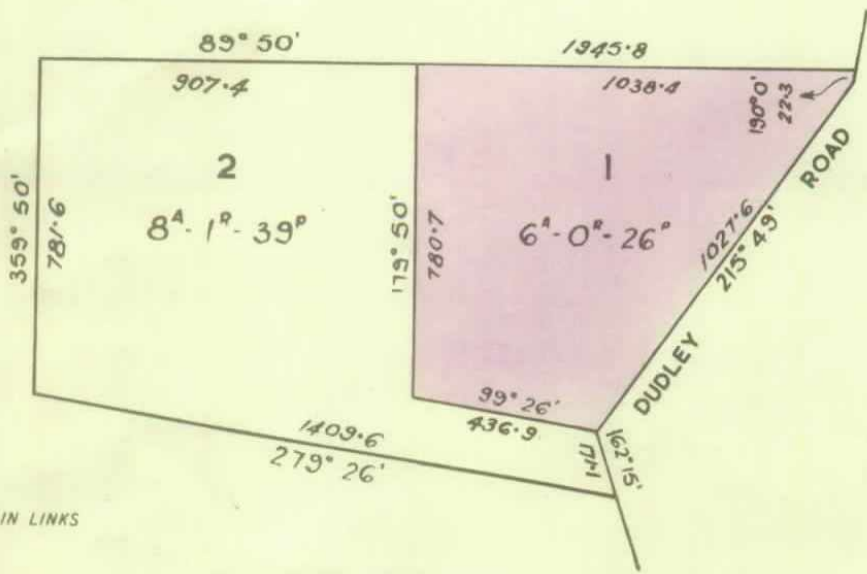


*[Signature]*

Assistant Registrar of Titles

ENCUMBRANCES REFERRED TO

THE WHOLE OF THE LAND SHOWN ON THIS PLAN HAS BEEN SUBDIVIDED SEE Unregistered Plan 77691  
M.C. Plan 77691  
L.P.



MEASUREMENTS ARE IN LINKS

DERIVED FROM VOL.8302 FOL.691  
23/1/'64.

16911

**TRANSFER AS TO PART No. C961953**  
registered 13<sup>th</sup> DECEMBER 1967.

**CANCELLED AS TO PART**  
See Vol. 8706 Fol. 060



HORACE FREDERICK GEORGE BURCH is now the  
SURVIVING PROPRIETOR

Registered 22nd February 1968  
No.D10352



30 HORACE FREDERICK GEORGE BURCH died on 19th  
December 1969 Probate of his Will has  
been granted to KEITH BURCH Carpenter  
and DAVID BURCH Plumber both of Yarra  
Road Wonga Park

Registered 1st September 1970  
No.D818096



**CAVEAT No. E107240 LUGGED 20 July 1971**



**CAVEAT LAPSED 17 MAR 1972**



**TRANSFER AS TO BALANCE No. E 297641**  
registered 8<sup>th</sup> February 1972.  
**CANCELLED** See Vol. 8919 Fol. 460



**CANCELLED**



T08459-676-1-1

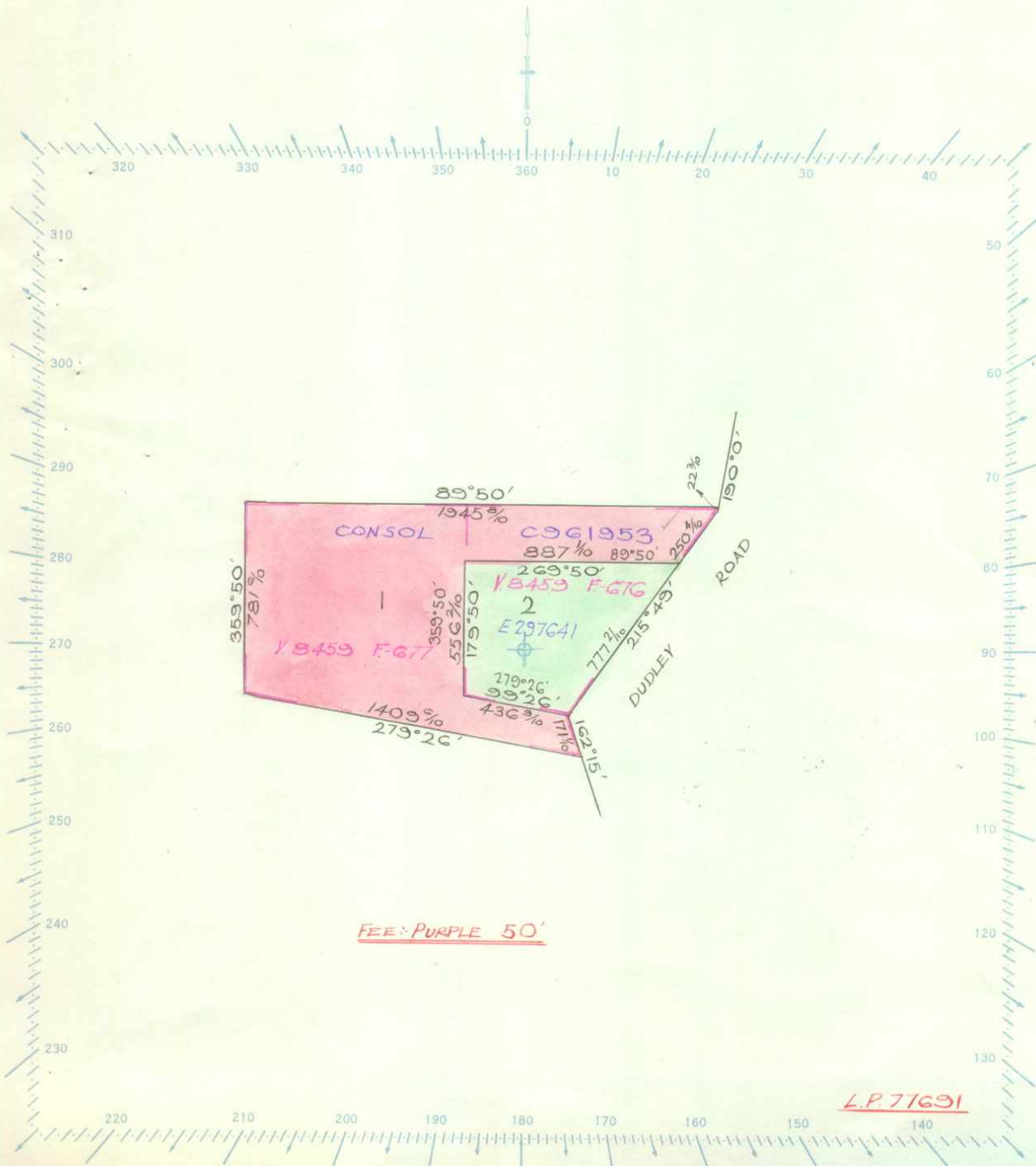
Delivered on-line by LANDATA®  
WARNING  
This document provides an image of a cancelled folio of the Register. It is not a statement from the register of land and information in relation to the land to which it refers.


SCALE: 5 Chains to one inch

Volume 8459 Folio 676  
V. 8459 F. 677

Delivered  
on-line by  
LANDATA®

WARNING  
This document provides an image of a cancelled folio of the Register. It is not a statement  
from the register of subsisting information in relation to the land to which it refers.



 **Natural Resources and Environment**  
AGRICULTURE • RESOURCES • CONSERVATION • LAND MANAGEMENT

**INTENTIONALLY  
BLANK**



Delivered by LANDATA®  
The document provides an image or characterization of the register in order to determine from the register of land parcels the information in relation to the land parcels.  
WARNING