



Imaged Document Cover Sheet

The document following this cover sheet is an imaged document supplied by LANDATA®, Secure Electronic Registries Victoria.

Document Type	Cancelled Title
Document Identification	7116/192
Number of Pages (excluding this cover sheet)	6
Document Assembled	12/11/2024 17:36

Copyright and disclaimer notice:

© State of Victoria. This publication is copyright and includes confidential information. No part may be reproduced by any process except in accordance with the provisions of the Copyright Act or pursuant to a written agreement. The State of Victoria does not warrant the accuracy or completeness of the information in this publication and any person using or relying upon such information does so on the basis that the State of Victoria shall bear no responsibility or liability whatsoever for any errors, faults, defects or omissions in the information.

The document is invalid if this cover sheet is removed or altered.

CANCELLED

Entered in the Register of Titles

Vol. 7116 Fol. 423192



VICTORIA.

Certificate of Title,

UNDER THE "TRANSFER OF LAND ACT 1928."

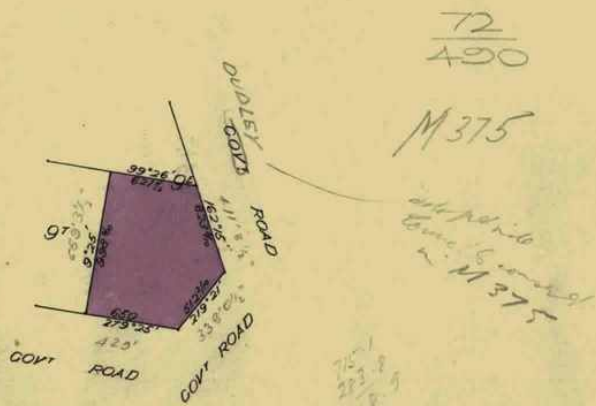
H.H.
 Edgar Ernest Walter and Enid Margaret Faram both of Yarra Road Wonga Park -
 Storekeepers are now joint proprietors -----
 now the proprietors of an Estate in Fee-simple, subject to the Encumbrances
 notified hereunder in ~~All the piece of Land delineated and coloured~~
 the surface and down to the depth of Fifty feet below the surface of ALL THAT ---
 piece of land delineated and coloured purple on the map in the margin containing-
 Seven acres Two roods and Thirty-one perches or thereabouts being part of Crown -
 Allotment Nine^E Parish of Warrandyte County of Evelyn -----

ORIGINAL CERTIFICATE.
Not to be dealt with outside the Titles Office.

Dated the Tenth day of May One
 thousand nine hundred and forty-eight.

Assistant Registrar of Titles.

ENCUMBRANCES REFERRED TO.



THE WHOLE OR PART OF
 THE WITHIN LAND HAS
 BEEN SUBDIVIDED SEE
 Unregistered Plan 97/94
 Misc. Plan
 L.P. 51635 NASSO 416

R.R.
 The Measurements are in links



Delivered on-line by LANDATA®
 This document provides an image of a cancelled folio of the Register. It is not a statement from the register of subsisting information in relation to the land to which it refers.
 WARNING

Charles Albert Edward Hodges Timber Worker and
Kathleen Mary Hodges Married Woman both of
Maroonah Highway Croydon North
are now joint proprietors of the within described
estate by transfer registered on 5th October 1950
and numbered 2354843

J. Kennedy.
Assistant Registrar of Titles

MORTGAGE to Florence Louise Twentyman

DISCHARGED
W.P. Brown
Assistant Registrar of Titles
13 Oct 1955

registered
numbered 959501

J. Kennedy.
Assistant Registrar of Titles

TRANSFER AS TO PART to
Blanche Short Read

and
Dorothy Nellie Read

on 13 Oct 1955

CANCELLED AS TO PART See Certificate of Title

Vol. 8110 Fol. 833
Area 1^A 3^R 35⁷/₁₀

registered
numbered A53062
W.P. Brown
Assistant Registrar of Titles

TRANSFER AS TO PART No. A950327

registered 21 April 1960

CANCELLED AS TO PART

See Vol. 8251 Fol. 149

Lot 6. Area 2^A, 2^R, 12⁴/₁₀ P



CAVEAT B228213 - Lot 9

Caveat transferred to new C/T

R11

TRANSFER AS TO PART No. B142392

registered 24 January 1961

CANCELLED AS TO PART See Vol. 8303 Fol. 480

Lots 1, 2, 4, 5,
7, 8, 9.



KATHLEEN MARY HODGES of Wonga Park Widow is now the
SURVIVING PROPRIETOR

Registered 29th August 1961

No. B270590



TRANSFER AS TO BALANCE No. E591237

registered 6th November 1972

CANCELLED See Vol. 8953 Fols 523 and 524



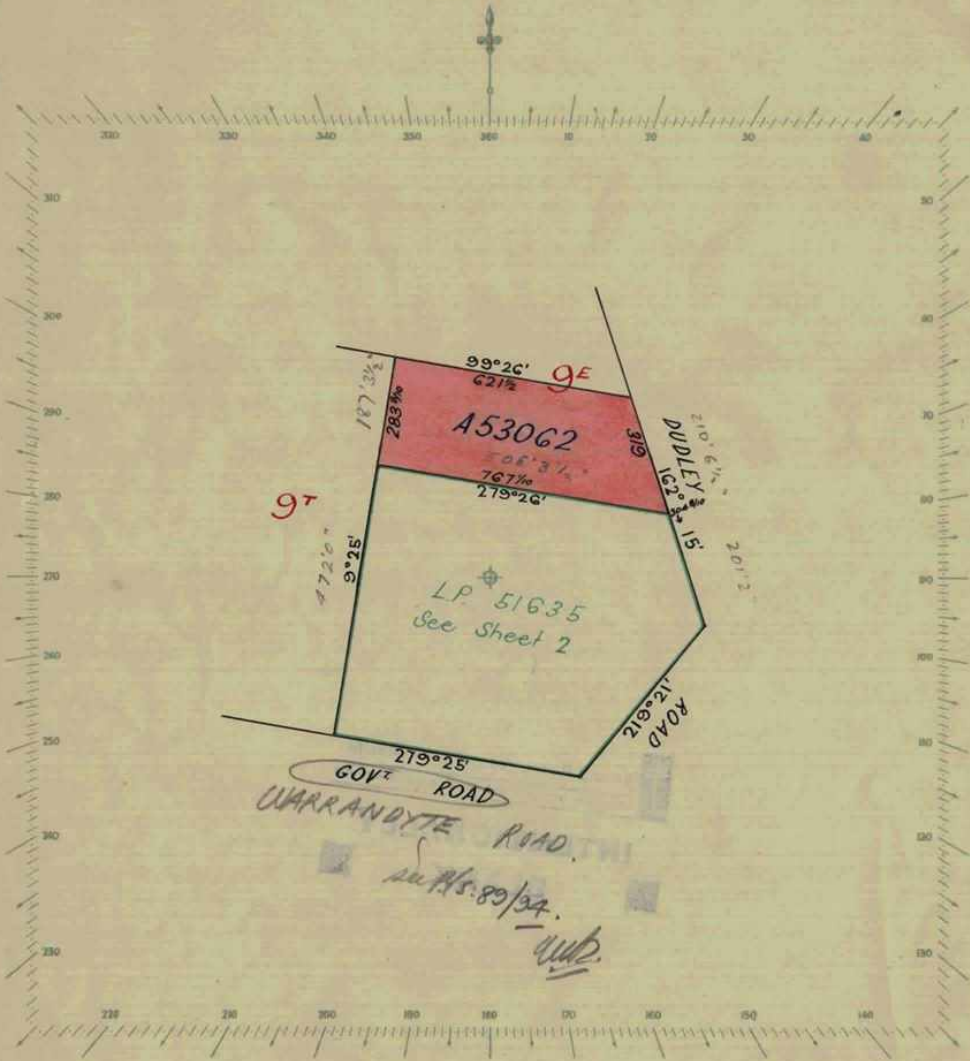
CANCELLED

Delivered on-line by LANDATA®
This document provides an image of a cancelled folio of the Register. It is not a statement from the register of subsisting information in relation to the land to which it refers.

WARNING

SCALE: 3 Chains to one inch

Vol 7116 Fol -192



FEE PURPLE (50')


Sheet 1

11/20/1956

Delivered on-line by LANDATA® WARNING This document provides an image of a recorded folio of the Register. It is not a statement from the register of subsisting information in relation to the land to which it refers.

Delivered
on-line by
LANDATA®

WARNING
This document provides an image of a scan/photo of the Register. It is not a statement
from the register of subsisting information in relation to the land to which it refers.

 **Natural Resources and Environment**
AGRICULTURE • RESOURCES • CONSERVATION • LAND MANAGEMENT

**INTENTIONALLY
BLANK**

SCALE: 100 Feet to one inch.

Vol. 7116 Fol. 192



Delivered on-line by LANDATA®. This document provides an image of a cancelled folio of the Register. It is not a statement from the register of subsisting information in relation to the land to which it refers.

WARNING

Fee Purple 50'

LP 51635 Sheet 2

Delivered
on-line by
LANDATA®

WARNING
This document provides an image of a cancelled folio of the Register. It is not a statement
from the register of subsisting information in relation to the land to which it refers.

 **Natural Resources and Environment**
AGRICULTURE • RESOURCES • CONSERVATION • LAND MANAGEMENT

**INTENTIONALLY
BLANK**