



Imaged Document Cover Sheet

The document following this cover sheet is an imaged document supplied by LANDATA®, Secure Electronic Registries Victoria.

Document Type	Plan
Document Identification	LP032864
Number of Pages (excluding this cover sheet)	1
Document Assembled	07/12/2024 22:59

Copyright and disclaimer notice:

© State of Victoria. This publication is copyright. No part may be reproduced by any process except in accordance with the provisions of the Copyright Act 1968 (Cth) and for the purposes of Section 32 of the Sale of Land Act 1962 or pursuant to a written agreement. The information is only valid at the time and in the form obtained from the LANDATA® System. None of the State of Victoria, LANDATA®, Secure Electronic Registries Victoria Pty Ltd (ABN 86 627 986 396) as trustee for the Secure Electronic Registries Victoria Trust (ABN 83 206 746 897) accept responsibility for any subsequent release, publication or reproduction of the information.

The document is invalid if this cover sheet is removed or altered.

LP 32864

EDITION 3

PLAN MAY BE LODGED

27/2/1956

PLAN OF SUBDIVISION OF
CROWN ALLOTMENT 9K

PARISH OF WARRANDYTE



COUNTY OF EVELYN

COLOUR CODE
E-1=BLUE

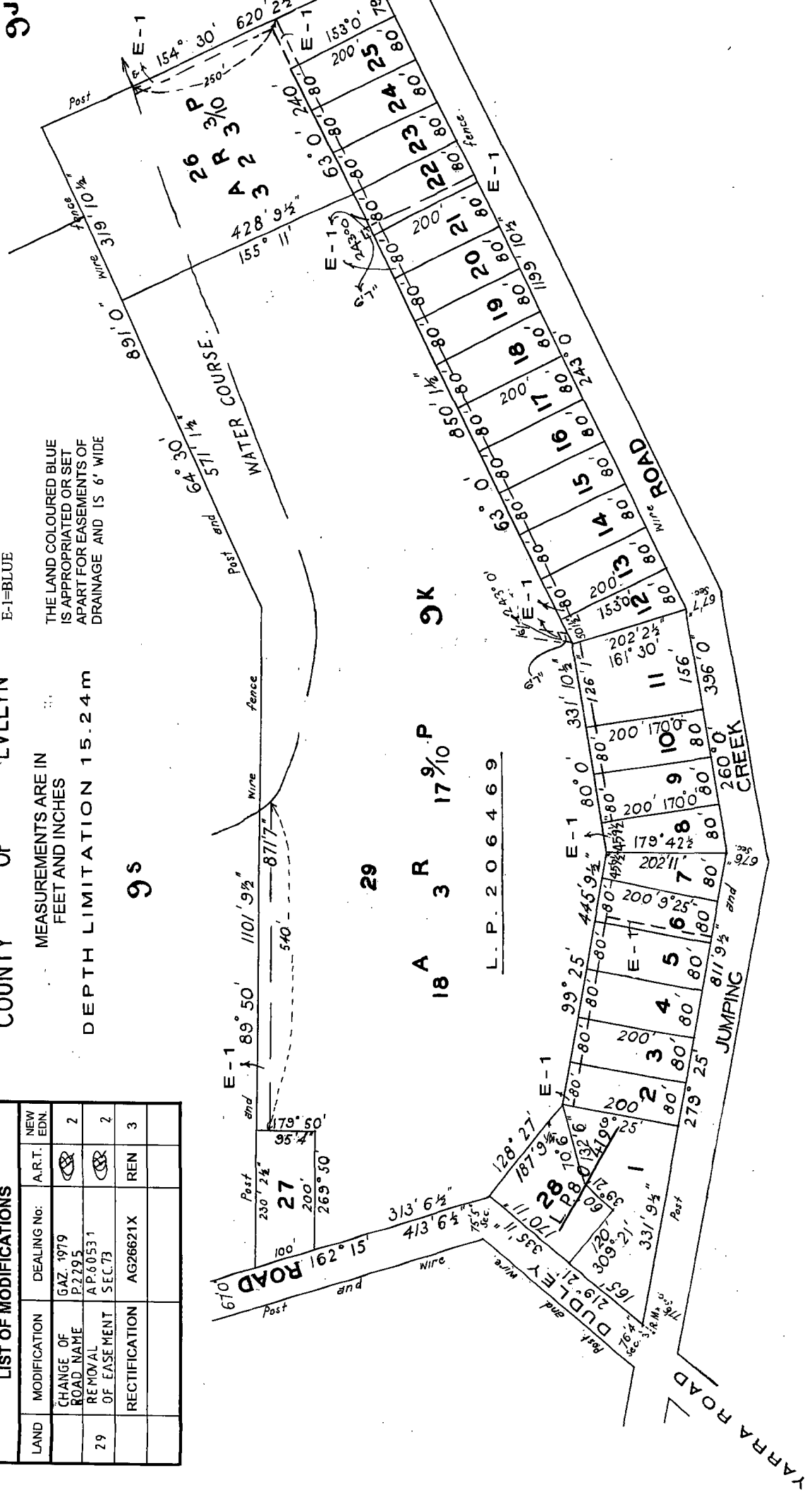
MEASUREMENTS ARE IN
FEET AND INCHES

DEPTH LIMITATION 15.24 m

THE LAND COLOURED BLUE
IS APPROPRIATED OR SET
APART FOR EASEMENTS OF
DRAINAGE AND IS 6' WIDE

LIST OF MODIFICATIONS			
LAND	MODIFICATION	DEALING No:	A.R.T.
	CHANGE OF ROAD NAME	GAZ 1979 P2795	
29	REMOVAL OF EASEMENT	AP.60531 SEC.73	
	RECTIFICATION	AG26621X	REN 3

9j



29

18 A R 3 17 9/10 P 9K

L. P. 206469

YARRA ROAD

JUMPING CREEK

ROAD

DUDLEY ROAD