



Imaged Document Cover Sheet

The document following this cover sheet is an imaged document supplied by LANDATA®, Secure Electronic Registries Victoria.

Document Type	Cancelled Title
Document Identification	3797/279
Number of Pages (excluding this cover sheet)	4
Document Assembled	11/12/2024 17:04

Copyright and disclaimer notice:

© State of Victoria. This publication is copyright and includes confidential information. No part may be reproduced by any process except in accordance with the provisions of the Copyright Act or pursuant to a written agreement. The State of Victoria does not warrant the accuracy or completeness of the information in this publication and any person using or relying upon such information does so on the basis that the State of Victoria shall bear no responsibility or liability whatsoever for any errors, faults, defects or omissions in the information.

The document is invalid if this cover sheet is removed or altered.

Entered in the Register 1900

CANCELLED

Vol. 3797 Fol. 759279



VICTORIA.

CANCELLED

Certificate of Title,

UNDER THE "TRANSFER OF LAND ACT 1890."

Thomas Bell Hughes of Ivanhoe Monumental Mason is -----

now the proprietor of an Estate in Fee simple, subject to the Encumbrances notified hereunder in ~~All the~~ *All the* piece of Land, delineated and coloured

so much and such part as lies above the depth of Fifty feet below the surface of ---

ALL THAT piece of land delineated and colored purple on the map in the margin -----

containing Seven acres or thereabouts being part of Crown Allotment Nine^T Parish of

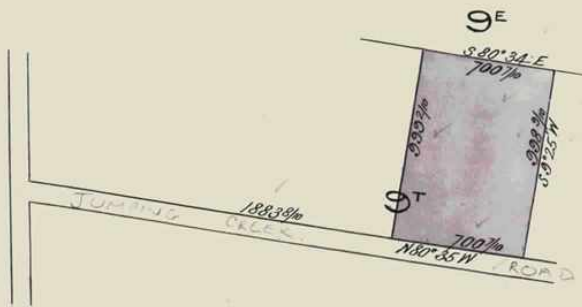
Warrandyte County of Evelyn -----

ORIGINAL CERTIFICATE.
Not to be dealt with outside the Titles Office.

Dated the Twentieth day of May
thousand nine hundred and fourteen.

W. Hughes
Assistant Registrar of Titles.

ENCUMBRANCES REFERRED TO



T03797-279-1-6

W.H.
The Measurements are in *links*



Delivered on-line by LANDATA®
This document provides an image of a cancelled folio of the Register. It is not a statement from the register or substituting information in relation to the land to which it refers.
WARNING

45 ml

Vol. 3580 Fol. 715984

Transfer. 747443

Application

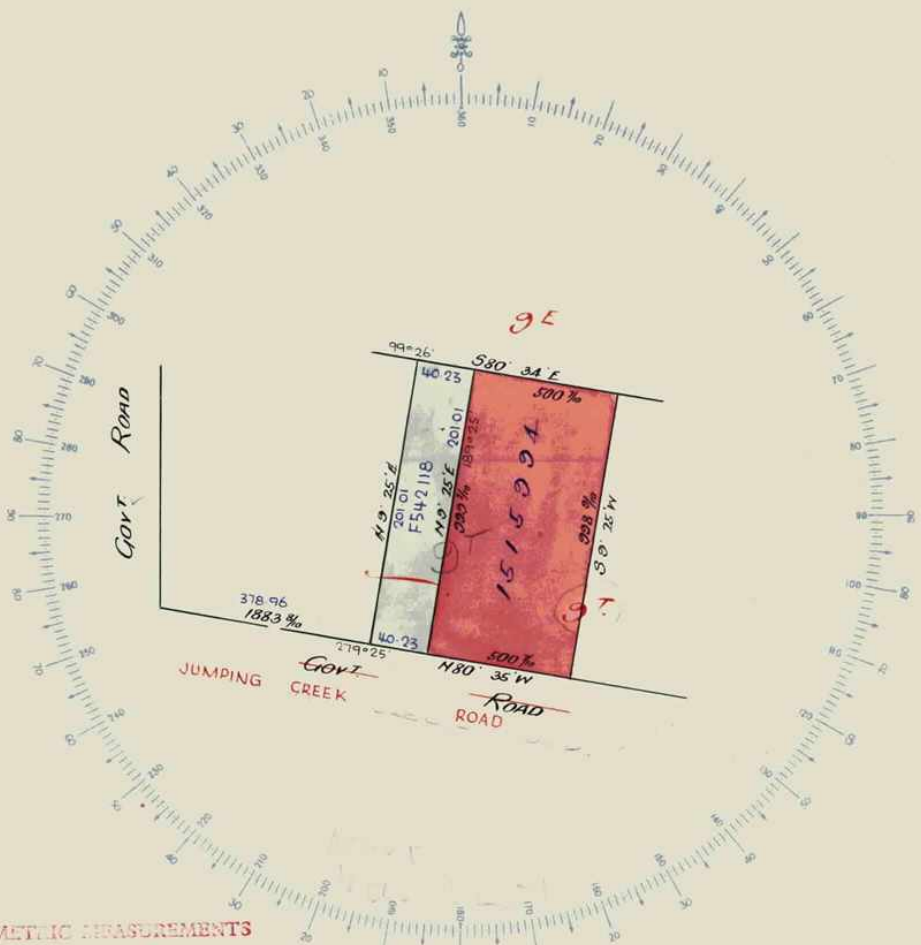
Nature of Instrument.	Day and Hour of its Production.	Names of the Parties to it.	Number or Symbol thereon.
<p>MORTGAGE to DISCHARGED <i>22nd October 1979</i> <i>L. Kennedy</i> <i>Assistant Registrar of Titles</i></p>	<p><i>Willes, Trade Guild.</i> registered on <i>4th November 1926</i> and numbered <i>552877</i> <i>L. H. Courtney</i> Assistant Registrar of Titles</p>	<p><i>Assistant Registrar of Titles.</i></p>	
<p>MORTGAGE to DISCHARGED <i>2nd January 1929</i> <i>L. Kennedy</i> <i>Assistant Registrar of Titles</i></p>	<p><i>Willes in Henry Flood</i> registered numbered <i>628786</i> <i>J. T. King</i> Assistant Registrar of Titles</p>	<p><i>Assistant Registrar of Titles.</i></p>	
<p>TRANSFER AS TO PART to <i>Edith May Ahrens.</i> registered on <i>9th January 1933</i> numbered <i>1515994</i> CANCELLED AS TO PART See Certificate of Title Vol 5827 Fol. 1165300 <i>Area 5. Acres.</i> <i>L. Kennedy</i> Assistant Registrar of Titles</p>		<p><i>Assistant Registrar of Titles.</i></p>	
<p>Red Ink No. <i>5640068</i> <i>Thomas Bell Hughes</i> died on <i>30 December 1953</i> Probate of his Will has been granted to <i>Paris Hughes</i> of <i>34</i> <i>Burran Avenue Balmoral New South</i> <i>Wales Storeman.</i> Dated <i>11 Oct 1957.</i> <i>L. Kennedy</i> Assistant Registrar of Titles</p>		<p><i>Assistant Registrar of Titles.</i></p>	
<p>S.O. PARIS HUGHES died on 4th November 1971 Probate of his Will has been granted to JULIE ANN McLEOD Married Woman and RAYMOND LESLIE McLEOD Clicker both of 6 Brazilia Drive Glen Waverley Registered 19th December 1973 No. F140843</p>	<p></p>	<p><i>Assistant Registrar of Titles.</i></p>	
<p>TRANSFER AS TO BALANCE No. <i>F542118</i> registered <i>3rd December 1974</i> CANCELLED See Vol. 9069 Fol. 413</p>	<p> CANCELLED</p>	<p><i>Assistant Registrar of Titles.</i></p>	

Delivered on-line by LANDATA®
This document provides an image of a cancelled folio of the Register. It is not a statement from the register or substituting information in relation to the land to which it refers.

WARNING

SCALE: *4 chains* to one inch.

Vol. *319* fol. *- 279*



METRIC MEASUREMENTS
STOWN IN BLUE

Delivered on-line by LANDATA®
WARNING
This document provides an image of a cancelled folio of the Register. It is not a statement from the register or subsisting information in relation to the land to which it refers.



T03797-279-2-4

15151

 **Natural Resources and Environment**
AGRICULTURE · RESOURCES · CLASSIFICATION · LAND MANAGEMENT

**INTENTIONALLY
BLANK**

Delivered
on-line by
LANDATA®

WARNING
This document provides an image of a cancelled folio of the Register. It is not a statement
from the register of subsisting information in relation to the land to which it refers.