



Imaged Document Cover Sheet

The document following this cover sheet is an imaged document supplied by LANDATA®, Secure Electronic Registries Victoria.

| | |
|---|-------------------------|
| Document Type | Cancelled Title |
| Document Identification | 6399/734 |
| Number of Pages (excluding this cover sheet) | 10 |
| Document Assembled | 03/01/2025 14:49 |

Copyright and disclaimer notice:

© State of Victoria. This publication is copyright and includes confidential information. No part may be reproduced by any process except in accordance with the provisions of the Copyright Act or pursuant to a written agreement. The State of Victoria does not warrant the accuracy or completeness of the information in this publication and any person using or relying upon such information does so on the basis that the State of Victoria shall bear no responsibility or liability whatsoever for any errors, faults, defects or omissions in the information.

The document is invalid if this cover sheet is removed or altered.



Entered in the Register Book

CANCELLED

Vol. 6399 Fol. 1279734

VICTORIA.

Certificate of Title,

UNDER THE "TRANSFER OF LAND ACT 1928."

David John Hooper of Yarra Road Croydon Carrier is -----
 now the proprietor of an Estate in Fee-simple, subject to the Encumbrances
 notified hereunder in All that piece of Land, delineated and coloured
 red on the map in the margin containing Five acres Three roods and Thirty perches-
 or thereabouts being part of Lot 67 on Plan of Subdivision No.4315 lodged in the--
 Office of Titles and being part of Crown Allotment Eleven^B and part of a former---
 Government Road Parish of Warrandyte County of Evelyn -----

ORIGINAL CERTIFICATE.
Not to be dealt with outside the Titles Office.

Dated the Twenty-eighth day of May One
 thousand nine hundred and forty.

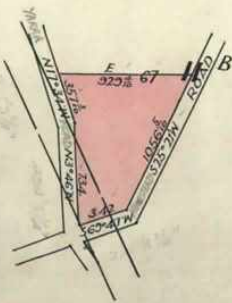


Assistant Registrar of Titles.

ENCUMBRANCES REFERRED TO.

74
289

THE WHOLE OR PART OF
 THE WITHIN LAND HAS
 BEEN SUBDIVIDED SEE
 L.P. 40804 R.1N°A173685



THE WHOLE/OR PART OF
 THE WITHIN LAND HAS
 BEEN SUBDIVIDED SEE
 Unsubdivided plan...
 Misc. Plan... N682
 L.P. 39302 N°A536544
 4-A1928 N°A607889

3609-326

C. R. B.
 The Measurements are in links.



T06399-734-1-2

Delivered on-line by LANDATA®
 This document provides an image of a cancelled copy of the Register. It is not a statement from the register of existing information in relation to the land to which it refers.
 WARNING

Theodore Buys of 7 Ewan Street
 Box Hill Engineer is
 now the proprietor of the within described estate by
 transfer registered on **14 JUL 1953**
 and numbered **2572 463**

W.P. Fitzgerald
 Assistant Registrar of Titles

TRANSFER AS TO PART No. A 304470
 registered **15th March 1957**
CANCELLED AS TO PART See Vol. **8162** Fol. **656**
 Area **1-2-30**

W.P. Fitzgerald
 Assistant Registrar of Titles

MORTGAGE to
 Lewis Joseph Clifford
 Bay numbered **1328352**
 registered **1958**
DISCHARGED **18 June 1958**

W.P. Fitzgerald
 Assistant Registrar of Titles

TRANSFER AS TO PART No. A518571
 registered **29th April 1958**
CANCELLED AS TO PART
 See Vol. **8186** Fol. **418**

P. Jones
 Assistant Registrar of Titles

CANCELLED AS TO PART APPLICATION No. A549566
 registered **18 June 1958** See Vol. **8203** Fol. **190**
 Lot 1 L.P. 39302

MORTGAGE to
 The Bank of Adelaide
 registered
 numbered **19550722**
 registered **19 June 1958**

W.P. Fitzgerald
 Assistant Registrar of Titles

TRANSFER AS TO PART No. A793294
 registered **7 August 1959**
CANCELLED AS TO PART See Vol. **8239** Fol. **937**
 Lot 3

TRANSFER AS TO PART No. B168495
 registered **8 March 1961**
CANCELLED AS TO PART
 See Vol. **8310** Fol. **258**
 Lot 2.

TRANSFER AS TO PART No. B419714
 registered **15th May 1962**
CANCELLED AS TO PART
 See Vol. **8397** Fol. **680**
 Lot 2.

TRANSFER AS TO PART No. B762927
 registered **2nd Oct. 1963**
CANCELLED AS TO PART
 See Vol. **8467** Fol. **023**
 Lot 3.

TRANSFER AS TO BALANCE No. D562045
 registered **17th November 1969**
CANCELLED See Vol. **8806** Fol. **717**

CANCELLED

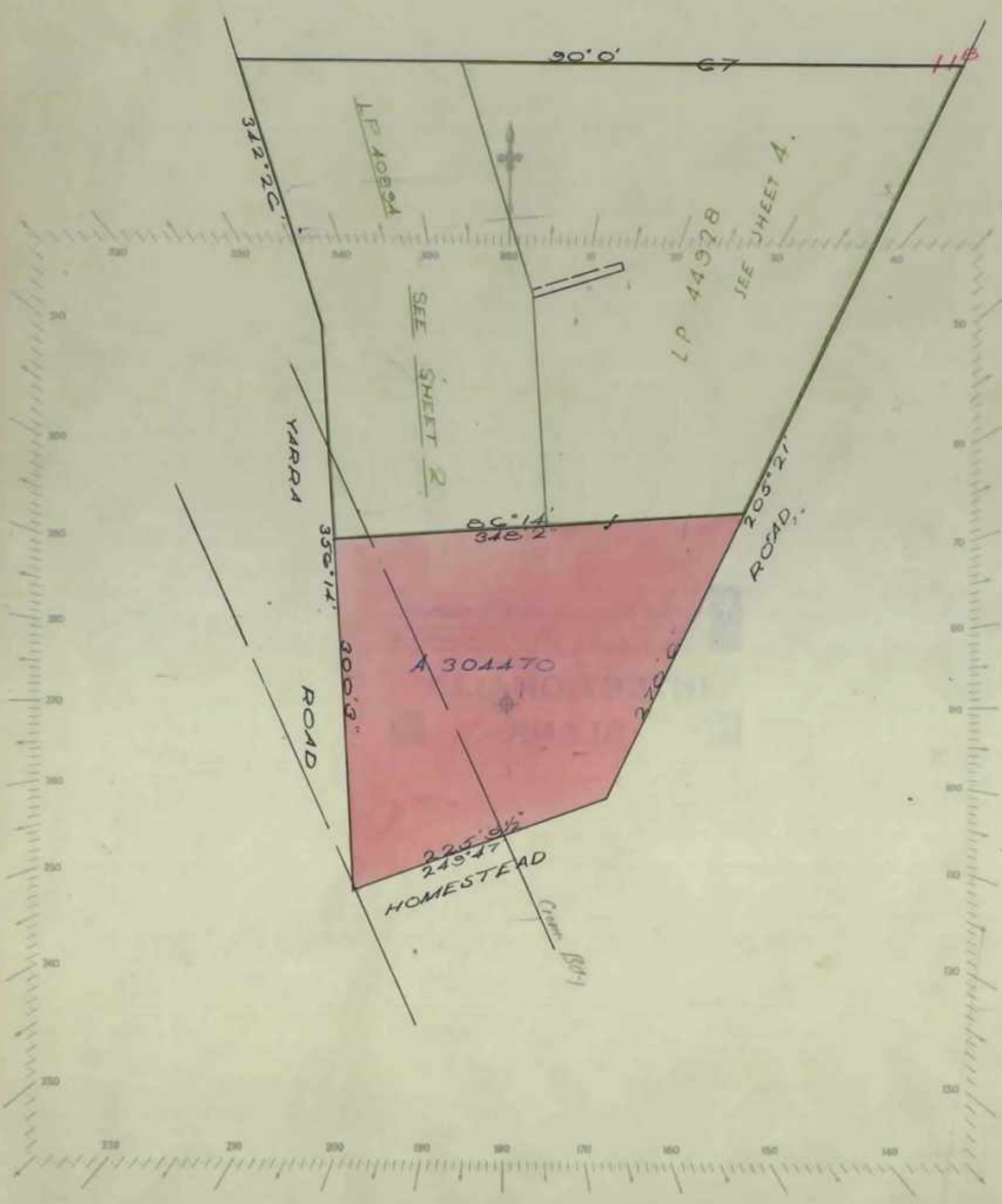


Delivered on-line by LANDATA®
 This document provides a range of cancelled folios of the Register. It is not a statement from the register of subsisting information in relation to the land to which it refers.

WARNING

SCALE: 100 Feet to one inch.

Vol. 6399 Pl. 734



Delivered on-line by LANDATA®

WARNING

This document provides an image of a scanned plat of the Register. It is not a statement from the register of subsisting information in relation to the land to which it refers.



SHEET 1

10-12-57



Natural Resources and Environment

AGRICULTURE • RESOURCES • CONSERVATION • LAND MANAGEMENT

INTENTIONALLY

BLANK

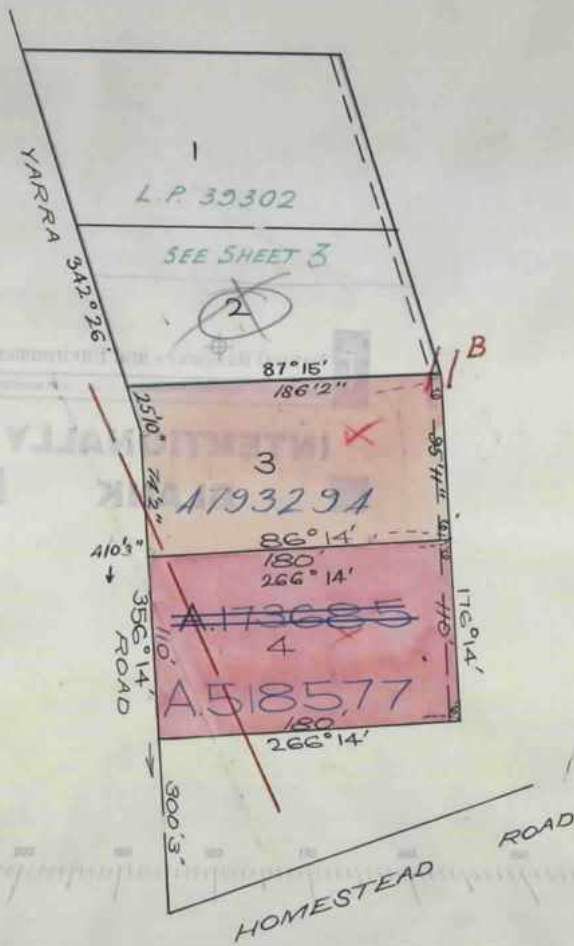
Delivered
on-line by
LANDATA®

This document provides an image of a cancelled folio of the Register. It is not a statement
from the register of subsisting information in relation to the land to which it refers.

WARNING

SCALE: 80 FEET. to one inch

LP 6399 PL 734



LP 40894




SHEET 2

Delivered
on-line By
LANDATA®

WARNING
This document provides an image of a cancelled folio of the Register. It is not a statement
from the register of subsisting information in relation to the land to which it refers.

K
25-9-50



 **Natural Resources and Environment**
AGRICULTURE • RESOURCES • CONSERVATION • LAND MANAGEMENT

**INTENTIONALLY
BLANK**

Delivered on-line by LANDATA®
WARNING: This document provides an image of a cancelled photo of the Register. It is not a statement from the register of subsisting information in relation to the land to which it refers.

SCALE: 100 feet to one inch

Vol. 6399 Fol. 734



Delivered on-line by LANDATA®


WARNING


This document provides an image of a canceled folio of the Register. It is not a statement from the register of existing information in relation to the land to which it refers.

L.P. 35302
Sheet 3

See p. 262-27



 **Natural Resources and Environment**
AGRICULTURE • RESOURCES • CONSERVATION • LAND MANAGEMENT

**INTENTIONALLY
BLANK** 

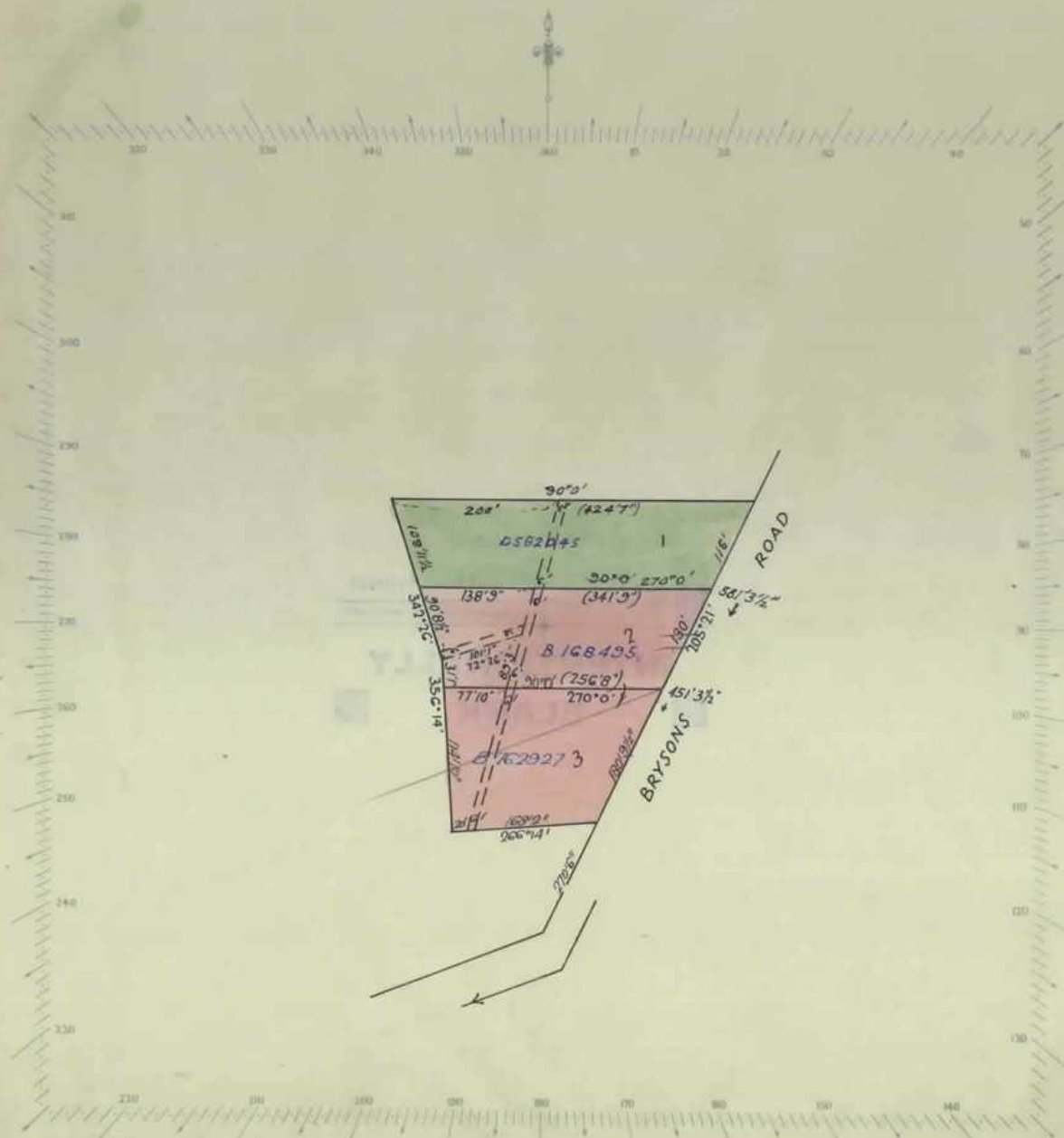
Delivered on-line by LANDATA®

WARNING

This document provides an image of a cancelled folio of the Register. It is not a statement from the register of subsisting information in relation to the land to which it refers.

SCALE: 150 feet to one inch.

Vol. 6399 fol. - 734



Delivered on-line by LANDATA®
WARNING
This document provides an image of a cancelled job of the Register. It is not a statement from the register of subsisting information in relation to the land to which it refers.

LP 44928

SHEET 4

Sx. 2/14/8/CI.





Natural Resources and Environment

AGRICULTURE • RESOURCES • CONSERVATION • LAND MANAGEMENT

INTENTIONALLY



BLANK



Delivered
on-line by
LANDATA®

WARNING
This document provides an image of a cancelled folio of the Register. It is not a statement
from the register of subsisting information in relation to the land to which it refers.