



# Imaged Document Cover Sheet

The document following this cover sheet is an imaged document supplied by LANDATA®, Secure Electronic Registries Victoria.

Document Type	<b>Cancelled Title</b>
Document Identification	<b>6962/286</b>
Number of Pages (excluding this cover sheet)	<b>4</b>
Document Assembled	<b>03/01/2025 15:31</b>

**Copyright and disclaimer notice:**

© State of Victoria. This publication is copyright and includes confidential information. No part may be reproduced by any process except in accordance with the provisions of the Copyright Act or pursuant to a written agreement. The State of Victoria does not warrant the accuracy or completeness of the information in this publication and any person using or relying upon such information does so on the basis that the State of Victoria shall bear no responsibility or liability whatsoever for any errors, faults, defects or omissions in the information.

The document is invalid if this cover sheet is removed or altered.



Entered in the Register Book

CANCELLED

Vol. 6962 Fol. 1392286

VICTORIA.

# Certificate of Title,

UNDER THE "TRANSFER OF LAND ACT 1928."

31-7-07  
[Handwritten mark]

Roy Hooper of Yarra Road Croydon Orchardist is -----  
 now the proprietor of an Estate in Fee-simple, subject to the Encumbrances-  
 notified hereunder in All that piece of Land, delineated and coloured-  
 red on the map in the margin containing Ten acres or thereabouts being part of ----  
 Lot 67 on Plan of Subdivision No.4315 lodged in the Office of Titles and being ---  
 part of Crown Allotments Eleven<sup>A</sup> and Eleven<sup>B</sup> and part of a former Government Road -  
 Parish of Warrandyte County of Evelyn-----

ORIGINAL CERTIFICATE.  
Not to be dealt with outside the Titles Office.

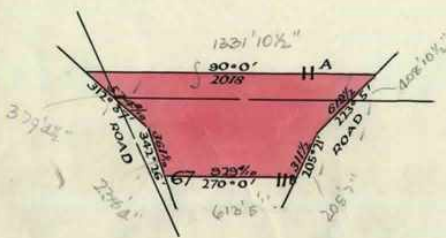
Dated the Fifteenth day of January One  
 thousand nine hundred and forty-seven.

January One  
*C. H. Simons*



Assistant Registrar of Titles.

ENCUMBRANCES REFERRED TO.



THE WHOLE OR PART OF  
 THE WITHIN LAND HAS  
 BEEN SUBDIVIDED SEE  
 Unregistered Plan  
 Misc. Plan 52407  
 L.P.

*[Signature]*  
 The Measurements are in links

S2407

Delivered on-line by LANDATA®  
 This document provides an image of a cancelled folio of the Register. It is not a statement from the register or substituting information in relation to the land to which it refers.

WARNING

Vol. 6399 Fol. 1279735

Transfer. 2051119

Application.

Discharged as to part  
being the land in transfer  
number 401902

13 JAN 1966

MORTGAGE to THE COMMERCIAL BANKING COMPANY OF SYDNEY LIMITED

8<sup>th</sup> January 1966 registered  
numbered 4062157

~~DISCHARGED  
12 SEP 1975~~



Assistant Registrar of Titles

TRANSFER AS TO PART No. 401902

registered 13<sup>th</sup> JANUARY 1966

CANCELLED AS TO PART

See Vol. 8638 Fol. 092



50

Roy Hooper

Died  
ON 23rd November 1972 PROBATE OF HIS WILL  
HAS BEEN GRANTED TO Jean Margaret Hooper

Registered 12<sup>th</sup> September 1975  
No. F851861.



TRANSFER AS TO BALANCE No. F851862

registered 12<sup>th</sup> September 1975

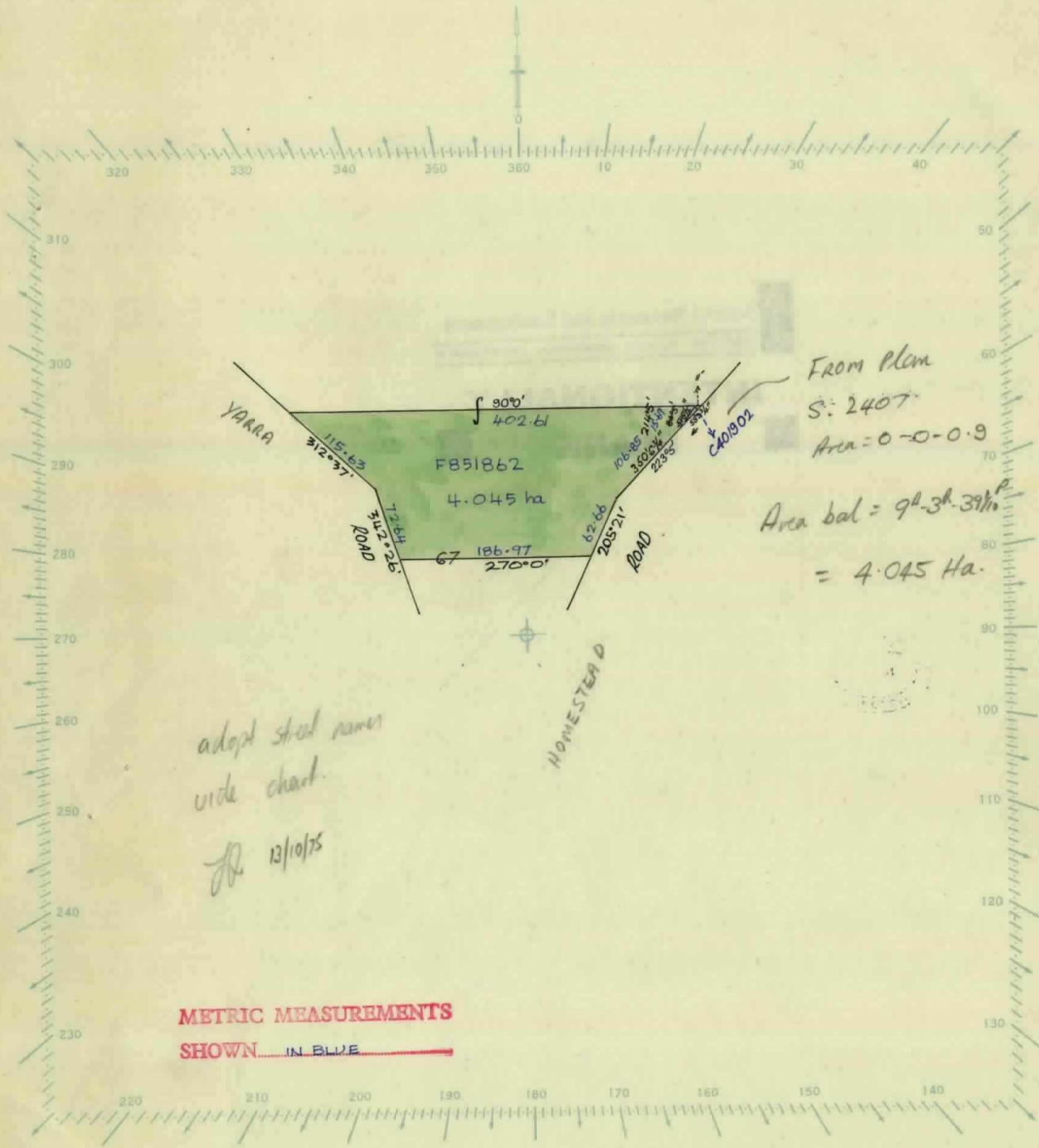
CANCELLED See Vol. 9112 Fol. 213



CANCELLED

SCALE: 400' to one inch

Volume 6362 Folio 286



From plan  
 S: 240°  
 Area = 0-0-0.9  
 Area bal = 9<sup>h</sup>.3<sup>h</sup>.39<sup>m</sup>  
 = 4.045 Ha.

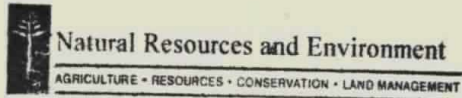
**METRIC MEASUREMENTS**  
 SHOWN IN BLUE

L.P. 4316

Delivered on-line by LANDATA®

WARNING

This document provides an image of a cancelled folio of the Register. It is not a statement from the register of subsisting information in relation to the land to which it refers.



**INTENTIONALLY  
BLANK**

Delivered  
on-line by  
LANDATA®

**WARNING**  
This document provides an image of a cancelled folio of the Register. It is not a statement  
from the register of subsisting information in relation to the land to which it refers.