



# Imaged Document Cover Sheet

The document following this cover sheet is an imaged document supplied by LANDATA®, Secure Electronic Registries Victoria.

|   |                         |
|---|-------------------------|
| Document Type                                   | <b>Cancelled Title</b>  |
| Document Identification                         | <b>9478/219</b>         |
| Number of Pages<br>(excluding this cover sheet) | <b>4</b>                |
| Document Assembled                              | <b>12/01/2025 23:06</b> |

**Copyright and disclaimer notice:**

© State of Victoria. This publication is copyright and includes confidential information. No part may be reproduced by any process except in accordance with the provisions of the Copyright Act or pursuant to a written agreement. The State of Victoria does not warrant the accuracy or completeness of the information in this publication and any person using or relying upon such information does so on the basis that the State of Victoria shall bear no responsibility or liability whatsoever for any errors, faults, defects or omissions in the information.

The document is invalid if this cover sheet is removed or altered.

**ORIGINAL**

**NOT TO BE TAKEN FROM THE OFFICE  
OF TITLES**



VICTORIA

**CANCELLED**  
REGISTER BOOK

VOL. 9478 FOL. 219

# Certificate of Title

UNDER THE "TRANSFER OF LAND ACT"

NEIL STANLEY SMITH of Yarra Road Croydon Orchardist is the proprietor of an estate in fee simple subject to the encumbrances notified hereunder - in so much as lies above the depth of 15.24 METRES below the surface of - all that piece of land in the Parish of Warrandyte County of Evelyn - - being part of Crown Allotment 14<sup>A One</sup> which land is shown enclosed by - - continuous lines on the map on the sheet annexed hereto TOGETHER WITH a - right to use the land shown marked B on the said map for drainage - - - - purposes - - - - -

DATED the 23rd day of June 1982

Assistant Registrar of Titles



### ENCUMBRANCES REFERRED TO

As to the land shown marked C - - - -  
THE DRAINAGE EASEMENTS created by - - -  
Transfers A575365 and B167525 - - - -  
As to the land shown marked D - - - -  
THE EASEMENT to State Electricity - - -  
Commission of Victoria created by - - -  
Instrument D473453 - - - - -

PLAN 141703  
AFFECTS LAND HEREIN



T09478-219-1-1

Derived from Vol.8661 Fol.158  
J980113

MEASUREMENTS ARE IN

Delivered on-line by LANDATA®  
WARNING  
This document provides an image of a cancelled folio of the Register. It is not a statement from the register of subsisting information in relation to the land to which it refers.

KV

**CANCELLED**

The following Titles have been issued  
Pursuant to Regulation 12 of the  
Transfer of Land Act

|                             |        |      |     |
|-----------------------------|--------|------|-----|
| on 6 <sup>th</sup> May 1985 | 9510   | Fol. | 347 |
| Lots ONE to A               | in Vol |      |     |
|                             | 9510   | Fol. | 348 |
|                             | to Vol |      |     |



**CANCELLED**

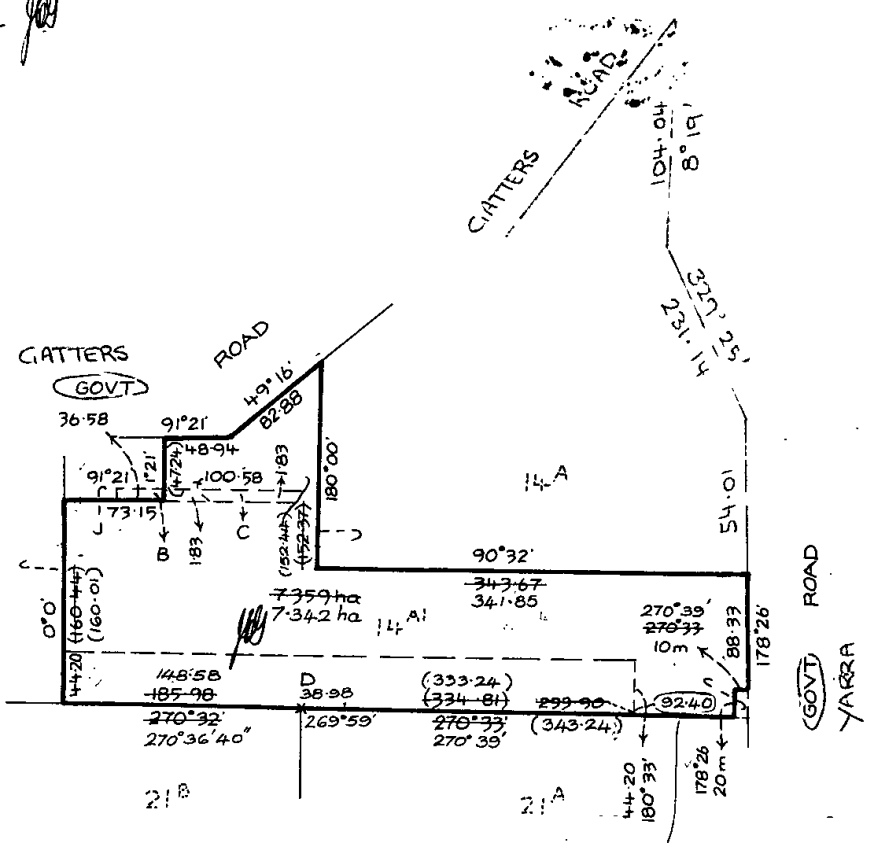
Delivered  
on-line by  
LANDATA®

WARNING  
This document provides an image of a cancelled folio of the Register. It is not a statement  
from the register of subsisting information in relation to the land to which it refers.

J980113

ANNEXED SHEET REFERRED TO IN  
CERTIFICATE OF TITLE VOL. 9478 FOL 219  
*Dingate*  
ASSISTANT REGISTRAR OF TITLES

APPN 21882 SEC 103  
2-9-82



Adapt p/s 141703  
road names a connection.  
R 11/2183

Adapt side  
D 473453  
R 11/2183

Delivered on-line by LANDATA®  
WARNING  
This document provides an image of a cancelled folio of the Register. It is not a statement from the register of subsisting information in relation to the land to which it refers.

AREA IS IN HECTARES (ha)  
MEASUREMENTS ARE IN METRES





Natural Resources and Environment

AGRICULTURE • RESOURCES • CONSERVATION • LAND MANAGEMENT

**INTENTIONALLY**



**BLANK**



Delivered  
on-line by  
LANDATA®

WARNING  
This document provides an image of a cancelled folio of the Register. It is not a statement  
from the register or subsisting information in relation to the land to which it refers.