



Imaged Document Cover Sheet

The document following this cover sheet is an imaged document supplied by LANDATA®, Secure Electronic Registries Victoria.

Document Type	Plan
Document Identification	LP138632
Number of Pages (excluding this cover sheet)	1
Document Assembled	14/06/2024 23:26

Copyright and disclaimer notice:

© State of Victoria. This publication is copyright. No part may be reproduced by any process except in accordance with the provisions of the Copyright Act 1968 (Cth) and for the purposes of Section 32 of the Sale of Land Act 1962 or pursuant to a written agreement. The information is only valid at the time and in the form obtained from the LANDATA® System. None of the State of Victoria, LANDATA®, Secure Electronic Registries Victoria Pty Ltd (ABN 86 627 986 396) as trustee for the Secure Electronic Registries Victoria Trust (ABN 83 206 746 897) accept responsibility for any subsequent release, publication or reproduction of the information.

The document is invalid if this cover sheet is removed or altered.

LP138632
EDITION 1
PLAN APPROVED
19/02/82

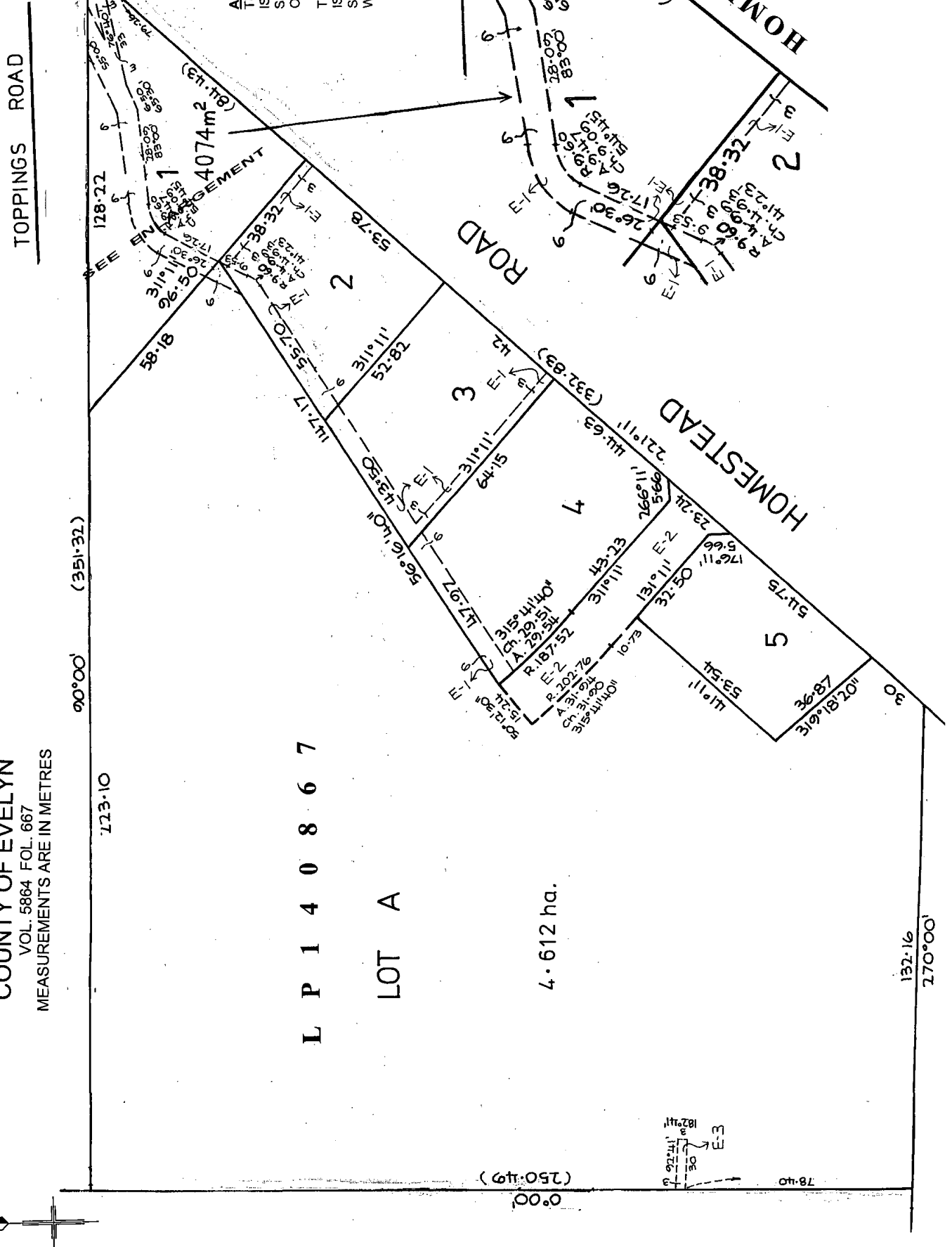
ENCUMBRANCES
AS TO THE LAND MARKED E-3.
THE DRAINAGE EASEMENT
CREATED VIDE H 727683

PLAN OF SUBDIVISION
OF PART OF CROWN ALLOTMENT 11A
PARISH OF WARRANDYTE
COUNTY OF EVELYN
VOL. 5864 FOL. 667
MEASUREMENTS ARE IN METRES

L P 1 4 0 8 6 7

LOT A

4.612 ha.



COLOUR CODE
E-1 = BLUE
E-2 = BROWN
E-3 = GREEN

APPROPRIATIONS
THE LAND COLOURED BLUE
IS APPROPRIATED OR
SET APART FOR EASEMENTS
OF DRAINAGE & SEWERAGE

THE LAND COLOURED BROWN
IS APPROPRIATED OR
SET APART FOR EASEMENTS OF
WAY, DRAINAGE & SEWERAGE

E-3
182.41'
0.5'
177.26'

0°00' (250.49')
78.40'

