



Imaged Document Cover Sheet

The document following this cover sheet is an imaged document supplied by LANDATA®, Secure Electronic Registries Victoria.

| | |
|---|-------------------------|
| Document Type | Plan |
| Document Identification | LP114448 |
| Number of Pages (excluding this cover sheet) | 2 |
| Document Assembled | 05/02/2025 21:34 |

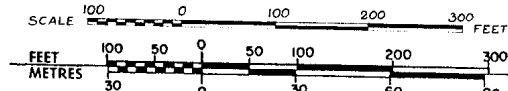
Copyright and disclaimer notice:

© State of Victoria. This publication is copyright. No part may be reproduced by any process except in accordance with the provisions of the Copyright Act 1968 (Cth) and for the purposes of Section 32 of the Sale of Land Act 1962 or pursuant to a written agreement. The information is only valid at the time and in the form obtained from the LANDATA® System. None of the State of Victoria, LANDATA®, Secure Electronic Registries Victoria Pty Ltd (ABN 86 627 986 396) as trustee for the Secure Electronic Registries Victoria Trust (ABN 83 206 746 897) accept responsibility for any subsequent release, publication or reproduction of the information.

The document is invalid if this cover sheet is removed or altered.

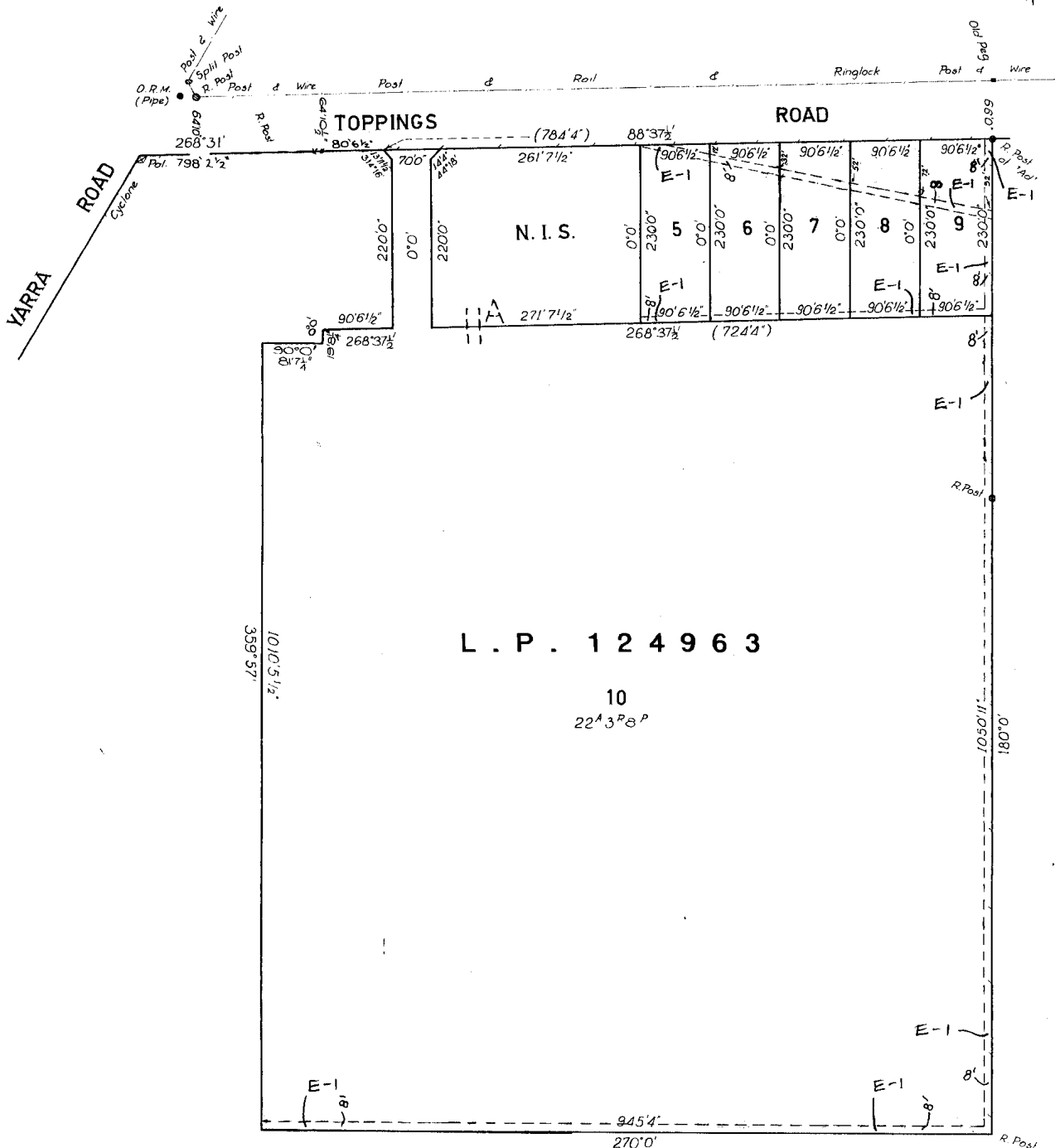
PLAN OF SUBDIVISION OF
PART OF CROWN ALLOTMENT 11^A
PARISH OF WARRANDYTE
COUNTY OF EVELYN

LP114448
EDITION 1
APPROVED 6/3/75



Note: The land coloured blue is appropriated or set apart for purposes of drainage and sewerage and is 8 feet wide.

COLOUR CONVERSION
E-1 = BLUE



FOR APPROPRIATIONS, ETC,
SEE BACK HEREOF

SUBDIVISIONAL
CERTIFICATE OF TITLE Y 8956 F 469

LP 114448
BACK OF SHEET 1

8956 470

**FOR TITLE REFERENCES TO LOTS
SEE PARCELS INDEX**

LODGED BY D.S. McKEE

DEALING No. DATE 18 / DEC / 74

DECLARED BY R. AUJARD

ON 8 / OCT / 71

COUNCIL SHIRE OF LILLYDALE

DATE OF CONSENT 25 / NOV / 74

PLAN MAY BE LODGED / /

PLAN APPROVED. DATE 6 / 3 / 75 TIME 10:40 a.m.
p.m.

THE LAND COLOURED BLUE
IS APPROPRIATED OR SET
APART FOR EASEMENTS OF
DRAINAGE AND SEWERAGE.