



Imaged Document Cover Sheet

The document following this cover sheet is an imaged document supplied by LANDATA®, Secure Electronic Registries Victoria.

Document Type	Plan
Document Identification	LP041659
Number of Pages (excluding this cover sheet)	2
Document Assembled	09/02/2025 11:30

Copyright and disclaimer notice:

© State of Victoria. This publication is copyright. No part may be reproduced by any process except in accordance with the provisions of the Copyright Act 1968 (Cth) and for the purposes of Section 32 of the Sale of Land Act 1962 or pursuant to a written agreement. The information is only valid at the time and in the form obtained from the LANDATA® System. None of the State of Victoria, LANDATA®, Secure Electronic Registries Victoria Pty Ltd (ABN 86 627 986 396) as trustee for the Secure Electronic Registries Victoria Trust (ABN 83 206 746 897) accept responsibility for any subsequent release, publication or reproduction of the information.

The document is invalid if this cover sheet is removed or altered.

41659

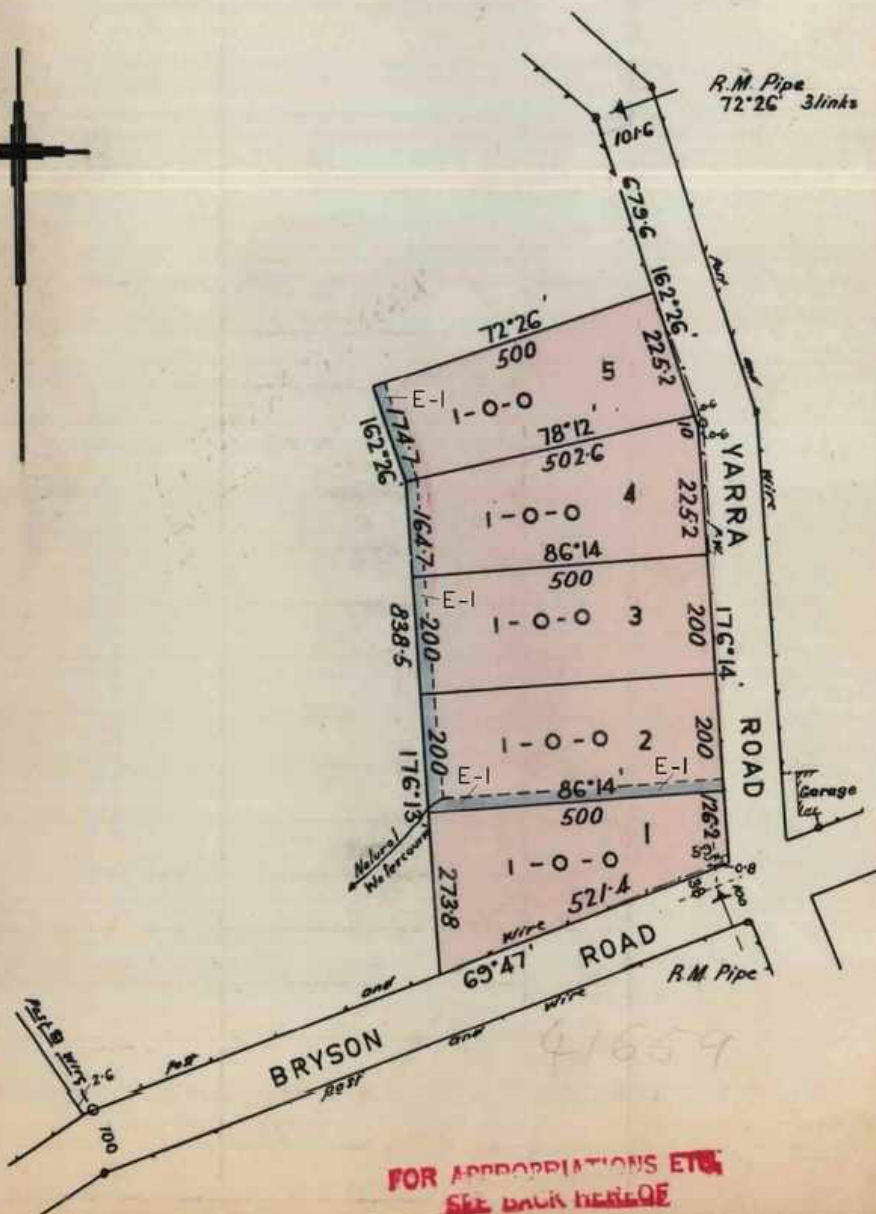


SCLP041659-1-0

PLAN OF SUBDIVISION OF LP 41659
 EDITION I
 PART OF CROWN ALLOTMENT 11A
 AND PART OF A FORMER GOVT. ROAD
 PARISH OF WARRANDYTE
 COUNTY OF EVELYN

SCALE. CHAINS

THE LAND COLOURED BLUE (3/4" WIDE)
IS SET ASIDE FOR DRAINAGE
PURPOSES.



COLOUR CODE
E-1= BLUE

FOR APPROPRIATIONS ETC
SEE BACK HEREOF

41659

