

Imaged Document Cover Sheet

The document following this cover sheet is an imaged document supplied by LANDATA®, Secure Electronic Registries Victoria.

Document Type	Cancelled Title
Document Identification	3951/029
Number of Pages (excluding this cover sheet)	4
Document Assembled	09/04/2025 08:29

Copyright and disclaimer notice:

© State of Victoria. This publication is copyright and includes confidential information. No part may be reproduced by any process except in accordance with the provisions of the Copyright Act or pursuant to a written agreement. The State of Victoria does not warrant the accuracy or completeness of the information in this publication and any person using or relying upon such information does so on the basis that the State of Victoria shall bear no responsibility or liability whatsoever for any errors, faults, defects or omissions in the information.

The document is invalid if this cover sheet is removed or altered.

Entered in the Register Book,

CANCELLED

Vol. 3951 Fol. 790029



VICTORIA.

Certificate of Title,

UNDER THE "TRANSFER OF LAND ACT 1915."

William George Kneel and ^{Edwin} Edward John Kneel both of Yarra Road Croydon Orchardists
are now the Proprietors as tenants in common in equal shares -----

~~And the proprietors~~ of an Estate in Fee-simple, subject to the Encumbrances
notified hereunder in All that piece of Land, delineated and coloured
red on the map in the margin containing Fifty-two acres Two rods and One perch or-
thereabouts being part of Crown Section Thirteen ^{omit the map} at Croydon Parish of Warrandyte-
County of Evelyn -----

ORIGINAL CERTIFICATE.

Not to be dealt with outside the Titles Office.

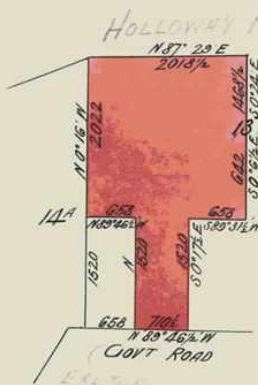
Dated the Thirteenth
thousand nine hundred and sixteen.

day of March

Assistant Registrar of Titles.

ENCUMBRANCES REFERRED TO.

SPECIAL RAILWAY CONDITION contained
in Crown Grant to Thomas Whitaker --

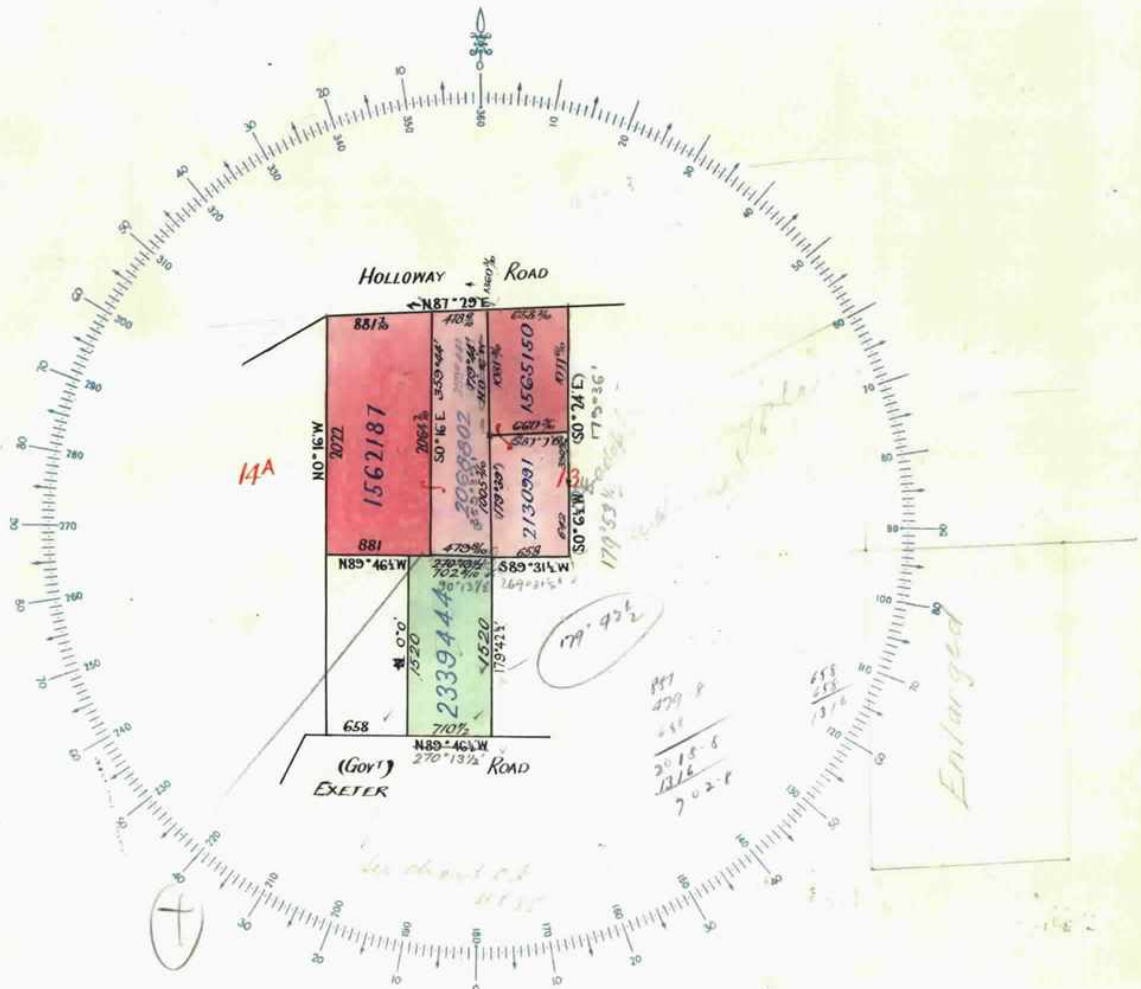


T03951-029-1-4

Vol. 3468 Fol. 693421 Transfer. 796895

Application

Nature of Instrument.	Day and Hour of its Production.	Names of the Parties to it.	Number or Symbol thereon.
<p>TRANSFER AS TO PART to</p> <p><i>Gordon Harold Roberts</i> registered</p> <p>on <i>29th October 1934</i> numbered <i>1562187</i></p> <p>CANCELLED AS TO PART See Certificate of Title</p> <p>Vol. <i>5928</i> Fol. <i>1185470</i></p> <p>Area <i>18.2.6</i> <i>J. McLennan</i></p> <p>Assistant Registrar of Titles.</p>			
<p>TRANSFER AS TO PART to</p> <p><i>Thomas Le Poedvin Rose</i> registered</p> <p>on <i>6th December 1934</i> numbered <i>1565150</i></p> <p>CANCELLED AS TO PART See Certificate of Title</p> <p>Vol. <i>5986</i> Fol. <i>1197076</i></p> <p>Area <i>7-0-18 1/2</i> <i>A. H. Agnew</i></p> <p>Assistant Registrar of Titles.</p>			
<p>TRANSFER AS TO PART to</p> <p><i>Frederick James Kneec</i> registered</p> <p>on <i>22nd April 1947</i> numbered <i>2068802</i></p> <p>CANCELLED AS TO PART See Certificate of Title</p> <p>Vol. <i>6985</i> Fol. <i>1396847</i></p> <p>Area <i>9.2.29</i> <i>H. H. Hewison</i></p> <p>Assistant Registrar of Titles.</p>			
<p>TRANSFER AS TO PART to</p> <p><i>Charles Thomas Kneec</i> registered</p> <p>on <i>15th March 1948</i> numbered <i>2130991</i></p> <p>CANCELLED AS TO PART See Certificate of Title</p> <p>Vol. <i>7100</i> Fol. <i>1419982</i></p> <p>Area <i>6.2.35 1/2</i> <i>H. H. Hewison</i></p> <p>Assistant Registrar of Titles.</p>			
<p>TRANSFER AS TO BALANCE to</p> <p><i>John William Kneec</i> registered</p> <p>on <i>6th September 1950</i> numbered <i>2339444</i></p> <p>CANCELLED See Certificate of Title</p> <p>Vol. <i>7449</i> Fol. <i>1489750</i></p> <p><i>H. H. Hewison</i></p> <p>Assistant Registrar of Titles.</p>			
<p>CANCELLED</p>			




Magian, Intet Phase Sec No.



T03951-029-2-2

Delivered
on-line by
LANDATA®

WARNING
This document provides an image of a scanned copy of the Register. It is not a statement
from the register of subsisting information in relation to the land to which it refers.

 **Natural Resources and Environment**
AGRICULTURE • RESOURCES • CONSERVATION • LAND MANAGEMENT
**INTENTIONALLY
BLANK**

5/11