

# Imaged Document Cover Sheet

The document following this cover sheet is an imaged document supplied by LANDATA®, Secure Electronic Registries Victoria.

Document Type	<b>Cancelled Title</b>
Document Identification	<b>8188/140</b>
Number of Pages (excluding this cover sheet)	<b>4</b>
Document Assembled	<b>21/04/2025 05:18</b>

**Copyright and disclaimer notice:**

© State of Victoria. This publication is copyright and includes confidential information. No part may be reproduced by any process except in accordance with the provisions of the Copyright Act or pursuant to a written agreement. The State of Victoria does not warrant the accuracy or completeness of the information in this publication and any person using or relying upon such information does so on the basis that the State of Victoria shall bear no responsibility or liability whatsoever for any errors, faults, defects or omissions in the information.

The document is invalid if this cover sheet is removed or altered.

**ORIGINAL**

**NOT TO BE TAKEN FROM  
THE OFFICE OF TITLES**



VICTORIA

Entered in the Register Book

**CANCELLED**

Vol. 8188 Fol. 140

# Certificate of Title

UNDER THE "TRANSFER OF LAND ACT 1954"

29 OCT 1958

*JB*

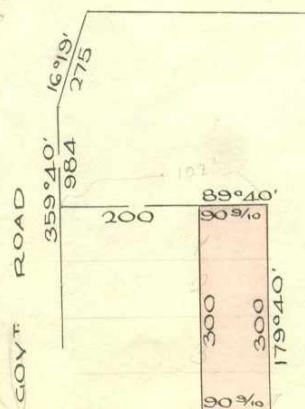
Emma Mary Matilda Knee of 12 Yarra Road Croydon Widow is -----  
now the proprietor -----  
of an Estate in Fee-simple subject to the Encumbrances notified hereunder in  
All that piece of Land, delineated and coloured red on the map in the ---  
margin being part of Crown Allotment 22<sup>B</sup> Parish of Warrandyte -----

Dated the Twenty-eighth day of March One  
thousand nine hundred and fifty-eight.

*A. B. J. Whitehead*  
Assistant Registrar of Titles



ENCUMBRANCES REFERRED TO



THE MEASUREMENTS ARE IN METRES.

THE WHOLE OR PART OF  
THE WHOLE LOT HAS  
BEEN SUBDIVIDED SEE  
Unregistered Plan 69099  
Misc. Plan 69099  
L.P.

Delivered  
on-line by  
LANDATA®

This document provides an image of a cancelled folio of the Register. It is not a statement  
from the register of subsisting information in relation to the land to which it refers.

WARNING

*accept LP dimensions  
Pl 17 1/2*

*MS 69099*

Vol. 4450 Fol. 998

Transfer 4503003

Application

William Wallace Ross, Orchardist and  
 Joyce Lorraine Ross, Married Woman  
 both of 99 Tannock Street  
 North Balwyn are  
 now joint proprietors of the within described estate by  
 transfer registered on 21 August 1958  
 and numbered A589828



22.4-59

RUBY ALICE KNEE of 10 Yarra Road Croydon  
 Married Woman is now the proprietor by  
 Transfer A686367  
 Registered 11th February 1959.



27/5/59

MORTGAGE TO ROSE MARY ALLEN

6th March 1959

numbered  
 A699629



## CREATION OF EASEMENT

Registered 24th May 1961  
 Numbered B212305



TRANSFER AS TO PART No. C526882  
 registered 29<sup>th</sup> JUNE 1966

CANCELLED AS TO PART  
 See Vol 8646 Fol. 568

M.C.T.3



TRANSFER AS TO PART No. C532415  
 registered 6<sup>th</sup> July 1966

CANCELLED AS TO PART  
 See Vol. 8661 Fol. 001

M.C.T.3



TRANSFER AS TO PART No. D170370  
 registered 26<sup>th</sup> AUGUST 1968

CANCELLED AS TO PART  
 See Vol 8744 Fol. 853



TRANSFER AS TO BALANCE No. D236504  
 registered 7<sup>th</sup> November 1968

CANCELLED See Vol 8785 Fol. 868



# CANCELLED



T08188-140-1-8

WARNING  
 This document provides information in relation to the land to which it relates.  
 From the register of land information in relation to the land to which it relates.

SCALE 200 FEET

Vol. 8188 Fol. 140

Delivered  
on-line by  
LANDATA®

WARNING

This document provides an image of a cancelled folio of the Register. It is not a statement from the register of subsisting information in relation to the land to which it refers.



290.9  
16.1  
274.8

140.9  
16.1  
274.8  
+ 10.0  
284.8

16.10 - 10' 7 1/2"  
6' 40" - 4' 0 1/2"



Natural Resources and Environment

AGRICULTURE • RESOURCES • CONSERVATION • LAND MANAGEMENT

**INTENTIONALLY  
BLANK**

Delivered  
on-line by  
LANDATA®

WARNING  
This document provides an image of a cancelled title of the Register. It is not a statement  
from the register of subsisting information in relation to the land to which it refers.



T08188-140-2-6