

FROM SWAMP TO LAKE



+ Jubilee
Methodist
Church
100 years 1860
- 1960

THE STORY OF
LAKE WENDOUREE, BALLARAT

S. SELMON
MENTIONED AS A
TRUSTEE IN 1908

lightwoods adorn the Reserve. The Curator has planted some trees he has brought from home. Some day these may be worth the long journey to see. About 7½ acres are enclosed in a post and rail fence, but the rest of the 60 acres is a wilderness. Whatever the future may have in store, the present Gardens is nothing that Ballarat can boast about!

Fortunately the Municipal Council showed great foresight and a sense of adventure in those exciting days of the gold rush.

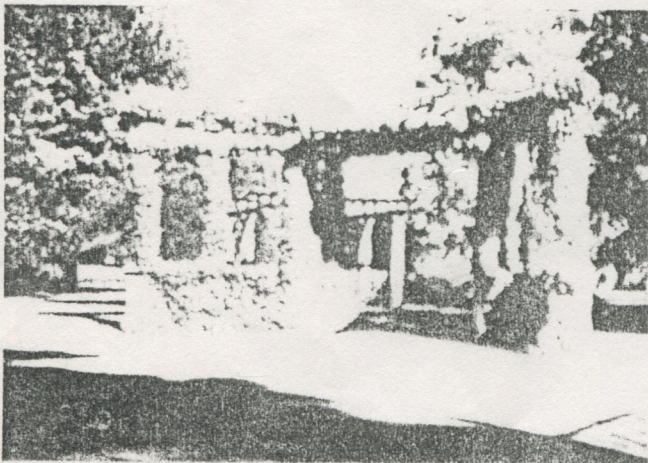
In 1859 the Municipal Council offered a premium of £10 for the best design of layout of the proposed Gardens. The Council also invited the co-operation of any gentleman of practical ability and knowledge of botany in forming a committee for the management of the Gardens.

A government grant of £200 was received in 1860, but after paying George Longley the sum of £3/0/0 each week there was little money remaining. Although he worked alone, occasionally casual labour was used for grubbing trees (men were paid 1/- for each tree felled and roots dug out) and for carting soil from Lake Wendouree, and water when



The large bluestone pillars for the gates still stand at each of the entrances.

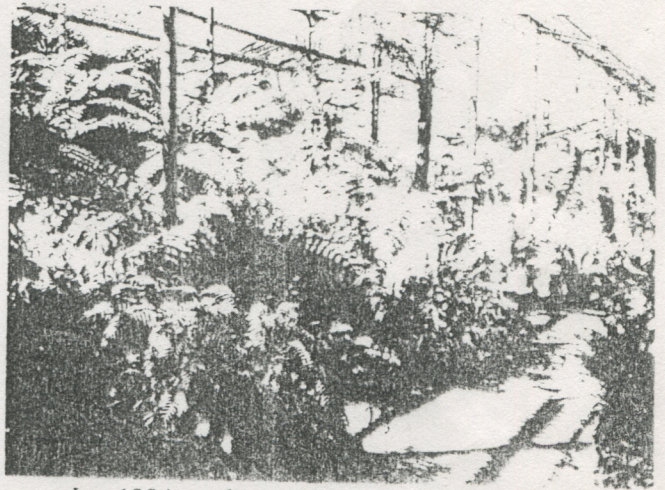
The one mile long road through the Gardens right through to Sturt Street was originally called Wellingtonia Avenue.



available. Later Longley was allowed to hire a lad to give assistance. He had to rely on gifts of shrubs, plants, bulbs and seeds from local residents.

Continuous droughts added to the problems, and in 1860 a grasshopper plague destroyed most of the plants. With few fences, another problem was wandering cattle, goats and horses which ate any new growth. Eventually 7½ acres were cleared, levelled and fenced. Trees were imported from England and America, and today these giant trees are a monument to George Longley's 40 years of hard work and foresight.

Later at the northern and southern entrances of the Gardens gatehouses were erected, both of which contained a caretaker who opened the gates each morning, and closed them again in the evening.



In 1884 a large Fernery was built, which presented a splendid horticultural interior, then in 1890 a Glass House was added for azaleas, calcedarias, amaryllis and orchids.

The opening of the railway line to Ballarat in 1870 brought many visitors from Melbourne and Geelong. The Ballarat Gardens was the social centre of this part of the Colony. To cater for the large crowds of day picnickers, a brick pavilion was built with a shop and dining hall in 1890 (now Lake Lodge).

It is not surprising concerning all this activity and interest that the Gardens (and the Lake) became a powerful element in shaping Ballarat's self image, and were the inspiration for the city's cultural development.

SHIRE OF BALLARAT

ORIGINAL COUNCIL, 1863

- Cr. JAMES BAIRD, President
 Cr. JAMES LAIDLAW
 Cr. ANGUS GILCHRIST
 Cr. ALEXANDER NICHOLSON
 Cr. JAMES KINNERSLY
 Cr. SIMON CADDEN
 Cr. RANDOLPH KEMP
 Cr. JOHN LANG

Secretary and Treasurer: J. F. MATHER
 Engineer: M. K. HAVERY

Collector and Thistle Inspector: JAMES THOMSON ROFS

Presidents of the Shire of Ballarat

Councillors

1863-65	Cr. J. Baird	1914-41	Cr. C. J. Henderson
1868-87	Cr. J. Baird	1915-27	Cr. G. C. Stewart
1863-66	Cr. J. Laidlaw	1917-21	Cr. R. L. McKenzie
1863-64	Cr. A. Gilchrist	1919-28	Cr. F. Collings
1865-75	Cr. A. Gilchrist	1919-31	Cr. W. S. Dougall
1863-68	Cr. A. Nicholson	1921-24	Cr. W. Monteith
1863-66	Cr. J. Kinnersly	1924-35	Cr. J. A. Charles
1863-85	Cr. S. Cadden	1924-37	Cr. R. B. Walton
1863-64	Cr. R. Kemp	1927-28	Cr. J. T. Feery
1863-64	Cr. J. Lang	1928-47	Cr. R. W. Crosthwaite
1864-69	Cr. G. Beaton	1928-46	Cr. R. T. White
1865-66	Cr. J. Stewart	1928-60	Cr. D. Baird
1865-66	Cr. J. McPhillirny	1931-43	Cr. S. G. Spittle
1865—	Cr. G. Swan	1932-46	Cr. H. J. Wheeler
1865-78	Cr. J. McIntosh	1935-63	Cr. W. Powell
1865-67	Cr. D. Gunn	1937-40	Cr. D. D. Draffin
1870-76	Cr. D. Gunn	1940-55	Cr. J. C. Walton
1866-72	Cr. D. Vallance	1941-51	Cr. A. Pickford
1866-72	Cr. J. Dalgleish	1953-58	Cr. A. Pickford
1880-87	Cr. J. Dalgleish	1943-55	Cr. J. P. Slattery
1866-68	Cr. M. Bouchier	1946-57	Cr. P. F. Henderson
1866-68	Cr. M. Batters	1946-73	Cr. C. E. Brown
1867-74	Cr. G. Powell	1947-60	Cr. G. A. Fraser
1868-73	Cr. J. Murray	1951-70	Cr. E. Edwards
1868-70	Cr. L. H. Kopke	1953-64	Cr. H. A. Patterson
1869-71	Cr. W. Robertson	1953-70	Cr. W. MacG. Troup
1871-75	Cr. J. Mitchell	1953-57	Cr. E. R. Lawrence
1872-80	Cr. W. Read	1955-75	Cr. T. W. Ford
1872-86	Cr. F. Edwards	1955-79	Cr. W. A. Walton
1873—	Cr. A. Findlay	1957-60	Cr. A. C. Martin
1879-85	Cr. A. Findlay	1957-60	Cr. D. L. White
1873-77	Cr. M. Ryan	1958-61	Cr. A. D. Moverley
1874-77	Cr. Moncrieff	1960-80	Cr. A. McDonald
1875-90	Cr. G. Rennie	1960—	Cr. D. A. Baird
1875-78	Cr. J. King	1960-67	Cr. J. M. Pemberton
1883-89	Cr. J. King	1960—	Cr. C. S. Giot
1876-89	Cr. W. H. Uren	1961-70	Cr. W. Hirst
1877-83	Cr. M. Feery	1963-80	Cr. D. H. Powell
1877-79	Cr. G. E. Beaumont	1964-88	Cr. C. A. Crick
1878-87	Cr. J. Innes	1967-76	Cr. J. R. Sansom
1878-80	Cr. J. Pollock	1970—	Cr. R. Kinnersly
1880-92	Cr. J. P. Spiers	1970-90	Cr. K. C. Edmonston
1893-1902	Cr. J. P. Spiers	1970-82	Cr. W. G. Cornell
1904-1910	Cr. J. P. Spiers	1973-74	Cr. G. Robertson
1915-1918	Cr. J. P. Spiers	1974-92	Cr. I. M. Nelson
1885-97	Cr. C. Edmonston	1975—	Cr. G. H. Spittle
1886-1906	Cr. J. Lester	1976—	Cr. W. M. Flynn
1887-93	Cr. J. Kennedy	1979-88	Cr. G. C. Walton
1887-96	Cr. T. Harding	1980-89	Cr. M. J. Vallance
1887-1900	Cr. C. C. Baird	1980—	Cr. R. A. McDonald
1889-1906	Cr. R. J. Dobson	1982—	Cr. B. L. Hughes
1889-98	Cr. W. N. White	1988-91	Cr. K. F. Murnane
1890-93	Cr. R. C. Baird	1988-93	Cr. R. A. Borley
1892-1901	Cr. E. Butler	1989-92	Cr. M. E. Ford
1893-1914	Cr. H. W. Symons	1990—	Cr. D. N. Vendy
1896-99	Cr. J. Dickie	1991—	Cr. R. J. Fewster
1908-1914	Cr. J. Dickie	1992—	Cr. A. Cormick
1897-1915	Cr. M. Ryan	1992—	Cr. J. D. White
1918-1953	Cr. M. Ryan	1993—	Cr. G. M. Caldwell
1898-1915	Cr. J. Mitchell		
1899-1917	Cr. J. M. Feery		
1900-28	Cr. J. Baird		
1901-04	Cr. J. H. S. Reid		
1902-08	Cr. W. Purcell		
1906-24	Cr. D. Walton		
1907-19	Cr. J. Troup		
1910-19	Cr. R. L. Medwell		
1914-32	Cr. O. J. M. Coghlan		

1863-64	Cr. J. Baird	1940-41	Cr. D. Baird
1864-65	Cr. A. Nicholson	1941-42	Cr. R. W. Crosthwaite
1864-65	Cr. J. Laidlaw	1942-43	Cr. R. T. White
1865-66	Cr. A. Nicholson	1943-44	Cr. H. J. Wheeler
1866-67	Cr. J. Gilchrist	1944-45	Cr. M. J. Ryan
1867-68	Cr. J. McIntosh	1945-46	Cr. J. C. Walton
1868-69	Cr. G. Beaton	1946-47	Cr. D. Baird
1869-70	Cr. J. Dalgleish	1947-48	Cr. A. Pickford
1870-71	Cr. W. Vallance	1948-49	Cr. W. Powell
1871-72	Cr. J. Murray	1949-50	Cr. J. P. Slattery
1872-73	Cr. D. Gunn	1950-51	Cr. M. J. Ryan
1873-74	Cr. D. Gunn	1951-52	Cr. J. C. Walton
1874-75	Cr. J. Baird	1952-53	Cr. C. E. Brown
1875-76	Cr. J. Baird	1953-54	Cr. G. A. Fraser
1876-77	Cr. J. McIntosh	1954-55	Cr. P. F. Henderson
1877-78	Cr. W. Read	1955-56	Cr. C. E. Brown
1878-79	Cr. F. Edwards	1956-57	Cr. D. Baird
1879-80	Cr. J. Baird	1957-58	Cr. E. Edwards
1880-81	Cr. W. H. Uren	1958-59	Cr. W. Powell
1881-82	Cr. W. H. Uren	1959-60	Cr. C. E. Brown
1882-83	Cr. W. H. Uren	1960-61	Cr. W. MacG. Troup
1883-84	Cr. J. Dalgleish	1961-62	Cr. H. A. Patterson
1884-85	Cr. J. Dalgleish	1962-63	Cr. W. A. Walton
1885-86	Cr. G. Rennie	1963-64	Cr. C. E. Brown
1886-87	Cr. G. Rennie	1964-65	Cr. T. W. Ford
1887-88	Cr. J. King	1965-66	Cr. E. Edwards
1888-89	Cr. J. Lester	1966-67	Cr. W. A. Walton
1889-90	Cr. J. P. Spiers	1967-68	Cr. C. S. Giot
1890-91	Cr. C. A. Edmonston	1968-69	Cr. D. A. Baird
1891-92	Cr. T. Harding	1969-70	Cr. A. McDonald
1892-93	Cr. C. C. Baird	1970-71	Cr. D. H. Powell
1893-94	Cr. E. Edmonston	1971-72	Cr. C. E. Brown
1894-95	Cr. R. J. Dobson	1972-73	Cr. D. A. Baird
1895-96	Cr. J. Lester	1973-74	Cr. C. A. Crick
1896-97	Cr. E. Butler	1974-75	Cr. J. R. Sansom
1897-98	Cr. W. N. White	1975-76	Cr. C. S. Giot
1898-99	Cr. H. W. Symons	1976-77	Cr. R. Kinnersly
1899-1900	Cr. J. P. Spiers	1977-78	Cr. K. C. Edmonston
1900-01	Cr. R. J. Dobson	1978-79	Cr. W. A. Walton
1901-02	Cr. J. Lester	1979-80	Cr. W. G. Cornell
1902-03	Cr. M. Ryan	1980-81	Cr. D. A. Baird
1903-04	Cr. J. Mitchell	1981-82	Cr. C. A. Crick
1904-05	Cr. H. W. Symons	1982-83	Cr. W. M. Flynn
1905-06	Cr. W. Purcell	1983-84	Cr. I. M. Nelson
1906-07	Cr. J. M. Feery	1984-85	Cr. G. H. Spittle
1907-08	Cr. J. Baird	1985-86	Cr. K. C. Edmonston
1908-09	Cr. M. Ryan	1986-87	Cr. G. C. Walton
1909-10	Cr. J. Mitchell	1987-88	Cr. C. S. Giot
1910-11	Cr. H. W. Symons	1988-89	Cr. R. Kinnersly
1911-12	Cr. J. Dickie	1989-90	Cr. R. A. McDonald
1912-13	Cr. D. Walton	1990-91	Cr. W. M. Flynn
1913-14	Cr. J. Troup	1991-92	Cr. B. L. Hughes
1914-15	Cr. M. Ryan	1992-93	Cr. D. A. Baird
1915-16	Cr. J. M. Feery		
1916-17	Cr. J. Baird		
1917-18	Cr. R. L. Medwell		
1918-19	Cr. D. Walton		
1919-20	Cr. O. J. M. Coghlan		
1920-21	Cr. C. J. Henderson		
1921-22	Cr. G. C. Stewart		
1922-23	Cr. J. Baird		
1923-24	Cr. M. Ryan		
1924-25	Cr. D. Walton		
	(died during term)		
	Cr. G. C. Stewart		
	(balance)		
1925-26	Cr. W. S. Dougall		
1926-27	Cr. F. Collings		
1927-28	Cr. J. A. Charles		
1928-29	Cr. O. J. M. Coghlan		
1929-30	Cr. C. J. Henderson		
1930-31	Cr. R. B. Walton		
1931-32	Cr. D. Baird		
1932-33	Cr. M. Ryan		
1933-34	Cr. J. A. Charles		
1934-35	Cr. S. G. Spittle		
1935-36	Cr. R. W. Crosthwaite		
1936-37	Cr. R. T. White		
1937-38	Cr. H. J. Wheeler		
1938-39	Cr. M. J. Ryan		
1939-40	Cr. W. Powell		