

# The Riponshire Advocate.

**BEAUFORT**

Registered at General Post Office, Melbourne, for transmission by post as a Newspaper.

BEAUFORT, SATURDAY, NOV. 4, 1950.

FOR RHEUMATICS, TOOTHACHE, HEADACHE, TAKE HARRIS' GENUINE POWDERS FROM JACKSON'S PHARMACY. PRICE THREEPENCE.

**HARRIS' FAMOUS POWDERS FOR HEADACHES, POST FRILE.**  
WM JACKSON, Chemist, BEAUFORT.

## BEAUFORT DISTRICT HOSPITAL

THIS SPACE RESERVED FOR A PHOTO OF THE NEW HOSPITAL. HAVE YOU SENT YOUR CONTRIBUTION ALONG?

YOUR LOCAL HOSPITAL SERVES THE DISTRICT WELL—SHOW YOUR APPRECIATION BY BECOMING A MEMBER

**MEMBERSHIP FEES PER ANNUM**  
Married Members, £1/5. Ex-Servicemen, Married of the First and Second World Wars, £1.  
Single Men, £1. Single Women, 18/.

**HOSPITAL FEES PER WEEK**  
Members: General Cases, 15/18/6 week. Non-Members: 22/12/6 week  
Children: Members, 12/12/6 week. Non-Members, 27/5/6 week

**MATERNITY CASES UP TO 14 DAYS**  
Maternity Cases: Members, £13/3/6 fortnight. Non-Members, £17/5/6 fortnight  
Maternity cases must arrange with Sister-in-charge two months prior to entering Hospital

**HOSPITAL BENEFITS ACT**  
All Fees are subject to a reduction of 8/ per day under the above Act.

Members must be financial on books at least two months to receive the **BENEFITS OF THE REDUCED FEES**, and in **MATERNITY CASES** financial membership for **SIX MONTHS** is required

Visiting Hours: From 3 p.m. to 4.30 p.m. and 7 p.m. to 8 p.m.  
A. R. BRIGGS, President. J. STOWELL, Secretary.

## High Honour for Former Resident

### Australians Attend Rome Conference

Miss Margaret Flynn (formerly of Waterloo), Australian delegate to the annual council meeting and conference of St. Joan's International Social and Political Alliance, now being held in Rome, has been elected a vice-president.

The other new vice-president elected is Dr. Marga Klompe, of the Netherlands.

A strong delegation from Australia attended the conference, including Miss Flynn, who was the founder of the movement in Australia.

Dame Enid Lyons was unable to attend.

Conference passed resolutions affirming the policy of the society to secure political, social, and economic equality for women.

Reports were also received on work carried out with the United Nations during the year on such subjects as human rights, traffic in women, equal pay and slavery.

### WOOL SALES

DALGETY & CO. LTD.

Dalgety and Company Limited, Geelong, report having held their second sale for the current season on Tuesday and Wednesday, 24th and 25th October, when they submitted a catalogue of 7200 bales. The selection was a very choice one. Competition was wide and general. Compared with the last sales held in Melbourne, best merino and come-back wools showed an increase of 5 per cent., whilst average to good style wools in this range were fully firm. Fine to medium crossbreeds were unchanged, but strong quality crossbreeds were 10 per cent. dearer, whilst specialty lambs wools made extreme prices. Several new records were established and no less than 215 lots in our catalogue made 175d or over; included in this total being 45 lots which made over 200d. The following are some of the leading prices obtained: Merino Fleeces—Ennerdale, 222d; JCT/Beaufort, 219d. Pieces—Ennerdale, 195d; Bellies—Terwallum / CC / T, 161d; Trawalla, 154d; Lambs—Meringa, 300d; Comeback Fleeces—Wurralangi, 191d; Pieces—WTA/Boorook, 168d; Bellies—WTA/Boorook, 145d; Lambs—Koorawera, 140d. Bulk-classed Fleeces—178d; Pieces—140d; Lambs—170d. District Sales—Merinos—JCT / Beaufort, 219d; R / Langi Willi (Linton), 214d; bkn 185d; Blythvale (Sura-tham), 212d; Trawalla (Trawalla), 208d; bkn 180d, bks 154d; W / E (Raglan), 204d; AHW / Glen Iris (Vite Vite), 200d; WA / MCK (Eurambeen), 184d; EAD / Trawalla, 181d; Amphitheatre (Amphitheatre), 197d; bkn 178d; Comebacks and Crossbreeds—SMS / VV (Vite Vite), 178d; JP / Skipton, 172d; WGS / Cosby / Skipton, 169d; Mt. Vite Vite (Vite Vite), 168d; AH / Trawalla, 168d; AB (Beaufort), 168d; Glen Iris (Vite Vite), 164d; Merino Lambs—R / Langi Willi, 298d; Trawalla, 251d; JCT/Beaufort, 250d; Blythvale, 228d; Amphitheatre, 295d.

### WEDDING BELLS

TRENGOVE — BAKER.

The Cobden Methodist Church was beautifully decorated for the wedding of Lesley Joyce, only daughter of Mr and Mrs W. L. Baker, of Cobden, to Ernest Alfred, son of Mr and Mrs A. L. Trengove, "Winderloo," Chute, via Beaufort, which was celebrated on Saturday, September 9.

The Rev. D. Wong officiating. Peach blossom in palest pink shades, blue grape hyacinths and pink stocks formed the floral decorations and each pew in the church was tied with white bows centred with a pink camellia. The bride, who was given away by her father, made a lovely picture in her classically simple gown of white brocade satin. The bodice featured a v-neckline and tiny covered satin buttons down the back to the waist, with slim fitting sleeves ending in a hilly point over the hands. The graceful skirt had a hip peplum which extended down to form a very long train. A single strand of pearls was her only ornament. A tulle veil with embroidered edge was surmounted with an orange blossom halo. The veil was loaned by Mrs C. Angwin, of Armadale, who is an aunt of the bride. A shower bouquet of white hyacinths was carried, and after the reception the bride left the bouquet to be placed in the church. Four cousins of the bride and a nephew of the bridegroom formed the remaining bridesmaid, looked charming in muted pink lame bodice with full skirt of marquisette over taffeta, high round neckline. Puff sleeves fashioned the bodice, with which she wore matching pink mittens and pleated tulle bandeaux with tiny pink and blue flowers which matched her bouquet of pink and blue hyacinths. Miss Peggy Gale, of Surrey Hills (bridesmaid), looked attractive in muted pink French lace bodice and nylon net over taffeta bouffant skirt with replica headress of the other bridesmaid. She carried a bouquet of pink and blue hyacinths.

## COUGLE'S DRAPERY EMPORIUM

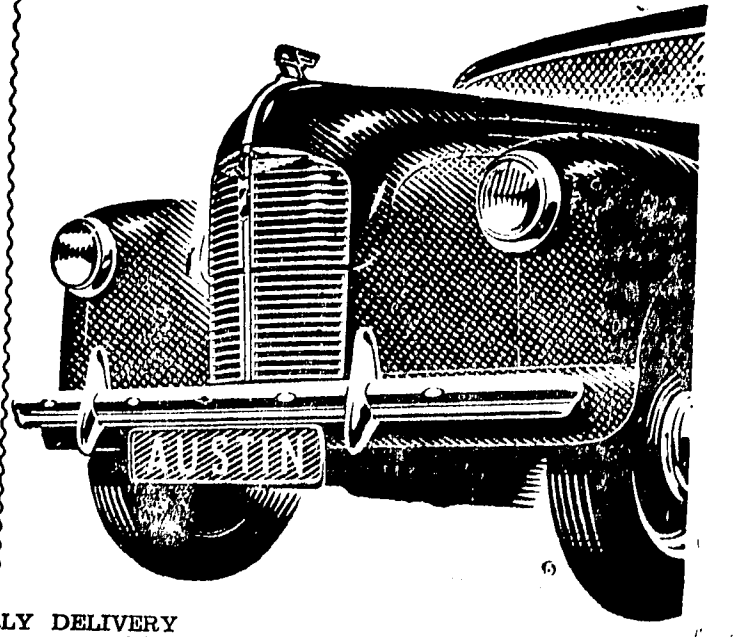
- AXMINSTER RUGS (all Sizes)
- ACTIL SHEETS
- QUALETA SHEETS
- QUALETA PILLOW CASES
- DICKIE'S TOWELS
- KAYSER HOSIERY and LINGERIE
- NEWEST DRESS MATERIALS
- KNITTING WOOLS IN GREAT VARIETY

### MEN'S WEAR SPECIALISTS

## GOUGLE'S THE BIG VALUE DRAPERS

Beaufort Phone 22

### THESE NEW CARS AVAILABLE



EARLY DELIVERY Also 16 H.P. CARS and 2 to 3 and 4 to 5 ton TRUCKS

Particulars from— LOCAL DEALER **P. T. Stevenson**

Private Address: 17 WINDERMERE ST. NTH. BALLARAT, Phone 2298

## Dennys, Lascelles Ltd.

**WOOL BROKERS, STOCK AND STATION, GRAIN AND SHIPPING AGENTS.**

HEAD OFFICE: GEELONG.

Weekly Stock Sales Newmarket and Geelong. Trucking arrangements made from this Office. Grain received for Storage at Geelong.

Auction and Private Sales of Land and Stock conducted in any part of the State.

Local representative: H. V. MARTIN, Beaufort. Phone 23. P. SMITH, Lexton.

### Beaufort and District Tennis Association

The season for 1950-51 opened on 21st October, when the results were:— Raglan Red defeated P.F.A., 7 sets to 1 set. Raglan Blue defeated Middle Creek, 6 sets to 2 sets. Trawalla I. defeated Waterloo, 8 sets to 0 sets. Trawalla II. defeated Buangor, 4 sets 51 games to 4 sets 49 games.

The results of matches played on 28th October were:— Trawalla I. defeated Brewster, 8 sets to 0 sets. Buangor defeated P.F.A., 8 sets to 0 sets. Raglan Red defeated Raglan Blue, 4 sets to 4 sets, by 7 games. Waterloo and Middle Creek did not play owing to wet weather.

### WOOL SALES

STRACHAN & CO. LTD.

Strachan & Co. Limited report (Thursday, 26th Oct.)—We submitted on the third and last day of the second Geelong series of sales the main portion of our catalogue. The offering totalled 4500, and a complete clearance was made at auction. In a very good selection, comeback and fine crossbred types predominated. Competition was again very strong and with an increase in the buying strength of the many consequently were fully main-tained for all descriptions, and in some cases exceeded the high level set at the opening of the series. The market closed on a very strong note. All time records were broken when Tilganga from Lismore secured 249d for 6 bales of sup com hoggets' fleece, and the Hillside / Jallumpa extra super lambs sold to 310d. Other very good sales in merinos were Elder / Kuruc (Rokewood), 217d; FF (in box) / Skipton, 217d; In comebacks, Eildon (Pol-larth) from Lismore, topped the section with 192 pence, together with JG / Skipton. District sales:— Merino Fleeces—FF (in box) / Skipton, 217d; 200d, bkn 180d; LF / MCK (Middle Creek), 180d; 158d; Merino Lambs—FF (in box) / Skipton, 237d; Comeback and Crossbred—JG / Skipton, 192d; LF / MCK (Middle Creek), 159d, fx 154d. Comeback Lambs. JG / Skipton, 121d.

### DISTRICT NEWS ITEMS

#### TRAWALLA

**EUCHRE SOCIAL.**—The monthly euchre held in October in aid of school funds was attended by the regulars, and the winners were:—Ladies—Mrs C. Vowles. Men—Mr T. Flavell. The next and probably the final euchre for 1950 will be held on Friday, 10th November, when it is trusted that all parents and supporters will be present.

**SHEARING.**—Shearing is progressing steadily, if somewhat slowly, owing to the wet nature of the season.

**PERSONAL.**—Mr and Mrs Wm. Foreman are enjoying a well-earned holiday in Sydney. Mr M. Vowles has gone to Sydney for his annual holidays.

**TENNIS CLUB.**—The local Tennis Club has one court top-dressed with coalas and sawdust, and the other is to be done in the very near future.

**SCHOOL ATTENDANCE.**—The attendance at the local school has so increased that extra desks have had to be obtained. As it will increase further next year, it may be found necessary to obtain another room.

### OBITUARY

#### MR. ALBERT PITCHER.

Mr Albert Pitcher, son of the late William and Jane Pitcher, of Mount Cole, Raglan, passed away in Ballarat on the 27th October at the age of 78 years. He was a brother of Mr Richard Pitcher of Beaufort, and leaves two brothers and two sisters in Western Australia. The remains of the late Mr Pitcher were interred in the Beaufort Cemetery on Saturday, 28th Oct. Rev. A. T. Cottrell conducted the service at the graveside. The funeral arrangements were carried out by Messrs. H. Evans & Son.

#### FLAG BRIDGE.

The Ripon R.S.L. Women's Auxiliary held a flag bridge social on Monday afternoon. The winners were Mesdames Coles, A. Vowles, and E. Whitfield, and the prizes for the lowest number of flags went to Mesdames Duke, E. Day, and Sullivan. The entrance prize was won by Mrs Goddard, and a competition by Mrs F. Webster.

**ELDER, SMITH & CO. LTD.**

Messrs. Elder, Smith & Co. limited report that for the second series of sales in Geelong they offered a catalogue of 7832 bales. The wool produced this season from the near Western district and Wimmera is exceptionally choice, and has rarely been seen to better advantage. The market this week was a particularly strong one, and record prices for wool were made and broken time and again throughout the series. Competition was animated and well sustained. A total clearance of the catalogue was effected at auction. Leading and district prices are quoted below:—Lambs—Woolbrook (Teeddale), 299d; 272d; JHK / Glenelg (Elmhurst), 281d; RWK / Glenelg (Tatvon), 261d; JH / Middle Creek, 261d; Merino Fleeces—BIK / Dobie, 231d; RTC / Kingcourt (Wondanah South), 230d; JH / Middle Creek, 211d; AAW / R (Raglan), 210d; AGP / Raglan, 203d; WAS / Beaufort, 197d; CL / W (Waterloo), 197d; WTL / Trawalla (Beaufort), 188d; JD / Chute (Waterloo), 177d; GG / R (Raglan), 158d; Comeback—Woodwood / HW (Minhamite), 190d; Brocka / EI (Anakie), 188d; The Glenelg (Coleraine), 188d; Curumbilla / Lexton, 174d; JJC / Kurumbilla (Nerrin Nerrin), 171d; ME / Stockyard / Hill (Beaufort), 160d.

## WOOL

Consign Your WOOL and PRODUCE to— **STRACHAN & CO. LTD.** (Late STRACHAN, MURRAY & SHANNON LTD.)

**GEELONG**  
SPECIAL CARE GIVEN TO FARMERS' WOOL.

Directors: J. C. Mackinnon (Chairman); W. E. Sargood (Vice-Chairman); G. L. Strachan, E. D. Mackinnon, J. F. Strachan, J. McG. Carson.

WOOL SALES held throughout the season. SKINS and HIDES sold every FORTNIGHT. FAT and STORE STOCK sold in Geelong Corporation Yards every MONDAY.

Regular STOCK SALES held at BIRREGURRA, CAMPERDOWN, LISMORE

LAND AND CLEARING SALES HELD IN ANY PART OF THE STATE.

**SOLE AGENTS IN VICTORIA FOR— Youngs Sheep Dips (KILLS TICKS, LICE AND THEIR EGGS)**

ARARAT Agents: Best AND SPALDING.  
BEAUFORT Agents: J. R. WOTHERSPOON & CO.

## STUD STOCK OF DISTINCTION

### CHALLICUM BUANGOR VIC.

CHALLICUM MERINO STUD of Fine and Superfine Wool. Large framed, weighty cutters of dense, soft-handling wool, renowned for its character, quality and length. Stud and Flock Rams Available.

CHALLICUM REGISTERED STUD OF PEDIGREED JERSEYS (Dept. of Agric. Accredited T.B. Free Herd). Herd Sire (C.) a Show Winner and a "proven" Sire. An acclimatized head of rich producers.

Registered Bulls & Heflers Available

**J. E. B. WHITE**  
Pho. : BUANGOR 1. CHALLICUM, BUANGOR, VIC.

Telephones: Mch. MU 6464 Geelong 5977

TELEGRAMS: "Eldersmith"

MELBOURNE—499-501 Bourke Street—95 William Street.  
GEELONG—68-92 Victoria Terrace.

Wool and Produce Brokers—Stud, Store and Fat Stock Sales—Real Estate Agents—Industrial and Agricultural Merchandise—Insurance.

Branches: BEAUFORT, HAMILTON, MEREDITH, WILLEAURA, CASTERTON, HORSHAM, MORTLAKE, WILLAURA, COLERAIN, LAKE BOLAC, STAWELL, THROUGHOUT VICTORIA, EDENHOPE, LISMORE, WARRACKNABEL, AND SOUTHERN RIVERINA.

HEAD OFFICE: 27 Currie Street, Adelaide. AND SYDNEY, BRISBANE, PERTH, LONDON.

BRIDGES HARDWARE

from BRIDGES HARDWARE... DINNERS SET... FOWLER JARS... AGE JARS...

GARDEN HOSE, TOOLS, BARROWS, YATTS' SEEDS, SCYTHES, SICKLES, FARM GATES... BRIDGES HARDWARE... PHONE 50

BRONCHIAL BALSAM... FOR SEVERE COLDS, BRONCHITIS OR INFLUENZA... Special Bronchitis Mixture... GRAHAM'S PHARMACY

REFRIGERATORS... Kerosene Operated... CHARLES HOPE... COLD FLAME... IMMEDIATE DELIVERY OR LIMITED BOOKINGS FOR SUMMER MONTHS.

PEARCE'S MODEL GROCERY SPECIALS... ROSSELLA TOMATO SOUP... MACARONI, Rinaldi Brand, 8d Packet.

BUONIGHT LAND 57 ACRES... BRIDGES HARDWARE... ACT NOW! PHONE 50

PEARCE'S MODEL GROCERY SPECIALS... ROSSELLA TOMATO SOUP... MACARONI, Rinaldi Brand, 8d Packet.

PEARCE'S MODEL GROCERY SPECIALS... ROSSELLA TOMATO SOUP... MACARONI, Rinaldi Brand, 8d Packet.

PEARCE'S MODEL GROCERY SPECIALS... ROSSELLA TOMATO SOUP... MACARONI, Rinaldi Brand, 8d Packet.

PEARCE'S MODEL GROCERY SPECIALS... ROSSELLA TOMATO SOUP... MACARONI, Rinaldi Brand, 8d Packet.

PEARCE'S MODEL GROCERY SPECIALS... ROSSELLA TOMATO SOUP... MACARONI, Rinaldi Brand, 8d Packet.

PEARCE'S MODEL GROCERY SPECIALS... ROSSELLA TOMATO SOUP... MACARONI, Rinaldi Brand, 8d Packet.

PEARCE'S MODEL GROCERY SPECIALS... ROSSELLA TOMATO SOUP... MACARONI, Rinaldi Brand, 8d Packet.

PEARCE'S MODEL GROCERY SPECIALS... ROSSELLA TOMATO SOUP... MACARONI, Rinaldi Brand, 8d Packet.

PEARCE'S MODEL GROCERY SPECIALS... ROSSELLA TOMATO SOUP... MACARONI, Rinaldi Brand, 8d Packet.

The Riponshire Advocate... ESTABLISHED 1874... Publishing every Saturday Morning.

GOLF ASSOCIATES ST ANDREW'S CHURCH ANNUAL MEETING... SPECIAL SERVICES...

Miss A. L. Norman (treasurer) presented a balance-sheet for the year ending 1949/50... The year commencing with a balance of £58/3/4.

Local News and Notes... IN HOSPITAL... FOOT GASHED... FINGER LACERATED... CHAMPION BULL...

The general balance-sheet, showing a credit of £19/7/2, was adopted... The Welfare Fund showed a credit of £16/9/0.

Local News and Notes... GOLDEN WEDDING... The 50th wedding anniversary of their parents, Rev. and Mrs. E. Barber...

The balance-sheet and report were adopted... The Welfare Fund showed a credit of £16/9/0.

Local News and Notes... BUONIGHT LAND 57 ACRES... The Riponshire Advocate is offering for sale 57 acres of land...

The Riponshire Advocate is offering for sale 57 acres of land... The Welfare Fund showed a credit of £16/9/0.

Local News and Notes... THE name of Miss Rheila Buchanan of Beaufort...

The Welfare Fund showed a credit of £16/9/0... The Riponshire Advocate is offering for sale 57 acres of land.

Local News and Notes... MR and MRS VICTORIA... Captain and Mrs Red Lapthorne...

The Riponshire Advocate is offering for sale 57 acres of land... The Welfare Fund showed a credit of £16/9/0.

Local News and Notes... THE name of Miss Rheila Buchanan of Beaufort...

The Welfare Fund showed a credit of £16/9/0... The Riponshire Advocate is offering for sale 57 acres of land.

Local News and Notes... MR and MRS VICTORIA... Captain and Mrs Red Lapthorne...

The Riponshire Advocate is offering for sale 57 acres of land... The Welfare Fund showed a credit of £16/9/0.

Local News and Notes... THE name of Miss Rheila Buchanan of Beaufort...

The Welfare Fund showed a credit of £16/9/0... The Riponshire Advocate is offering for sale 57 acres of land.

BEAUFORT C.W.A. ANNUAL MEETING... WOOL SALES... DENNY'S, LASCHELLES LTD

There was a large muster of Beaufort and district members at the C.W.A. for the annual meeting... The Wool Sales were conducted by Denny's, Lascelles Ltd.

MECHANICS' INSTITUTE COMMITTEE MEETING... BOY SCOUTS PROPOSED GARDEN PARTY...

The Committee of the Mechanics' Institute met in evening... The Boy Scout Group Committee accepted the generous offer of the local pictures for a Scout Night.

Local News and Notes... IN HOSPITAL... FOOT GASHED... FINGER LACERATED... CHAMPION BULL...

The Chamber of Agriculture believed that amending legislation to control industries should be urged... The Riponshire Advocate is offering for sale 57 acres of land.

Local News and Notes... GOLDEN WEDDING... The 50th wedding anniversary of their parents, Rev. and Mrs. E. Barber...

The Chamber of Agriculture believed that amending legislation to control industries should be urged... The Riponshire Advocate is offering for sale 57 acres of land.

Local News and Notes... BUONIGHT LAND 57 ACRES... The Riponshire Advocate is offering for sale 57 acres of land...

The Chamber of Agriculture believed that amending legislation to control industries should be urged... The Riponshire Advocate is offering for sale 57 acres of land.

Local News and Notes... THE name of Miss Rheila Buchanan of Beaufort...

The Chamber of Agriculture believed that amending legislation to control industries should be urged... The Riponshire Advocate is offering for sale 57 acres of land.

Local News and Notes... MR and MRS VICTORIA... Captain and Mrs Red Lapthorne...

The Chamber of Agriculture believed that amending legislation to control industries should be urged... The Riponshire Advocate is offering for sale 57 acres of land.

Local News and Notes... THE name of Miss Rheila Buchanan of Beaufort...

The Chamber of Agriculture believed that amending legislation to control industries should be urged... The Riponshire Advocate is offering for sale 57 acres of land.

Local News and Notes... MR and MRS VICTORIA... Captain and Mrs Red Lapthorne...

The Chamber of Agriculture believed that amending legislation to control industries should be urged... The Riponshire Advocate is offering for sale 57 acres of land.

CROSS ROADS ANNUAL OFF-SHEARS SALE... DAILY MEETING...

AT THE CROSSROADS YARDS, ADJOINING MAWLIK STATION, BEAUFORT. 8000 - SURPLUS - 8000 HIGH CLASS SLEEPS BREED MERINO SHEEP.

Local News and Notes... IN HOSPITAL... FOOT GASHED... FINGER LACERATED... CHAMPION BULL...

YOU ARE INVITED TO INSPECT OUR SPRING SHOW

OPENING THURSDAY, OCTOBER 19. SEE OUR WINDOW DISPLAY.

J. R. WOTHERSPON & Co. The Modern Suppliers. BEAUFORT Phones, 1 & 176

BEAUFORT A.N.A. FORTNIGHTLY MEETING OF BEAUFORT BLANCH, N.A. TUESDAY NIGHT, Mechanics Institute.

BEAUFORT PARK, SATURDAY, 4th NOVEMBER. Good Entries in All Classes.

BEAUFORT A.N.A. FORTNIGHTLY MEETING OF BEAUFORT BLANCH, N.A. TUESDAY NIGHT, Mechanics Institute.

BEAUFORT A.N.A. FORTNIGHTLY MEETING OF BEAUFORT BLANCH, N.A. TUESDAY NIGHT, Mechanics Institute.

HERE NOW! 1950 STANDARD Vanguard. A Fine Car Made Finer Still. See this amazing new 1950 Vanguard and you'll realize it's the ideal car for you.

CRAIG BROS., 36 ARMSTRONG ST., BALLARAT. Phone 1029.

KNIGHT'S TAXI SERVICE. PROMPT AND EFFICIENT TAXI SERVICE AVAILABLE AT ALL HOURS TO ANY PART OF THE DISTRICT.

Elizabeth Schlicht CERTIFIED CHIROPODIST AND PRACTICER. For Appointments write or phone 26. HAVELock ST., BEAUFORT.

THE CHRISTIAN SCIENCE MONITOR. For further information visit the Christian Science Reading Room.

THE CHRISTIAN SCIENCE MONITOR. For further information visit the Christian Science Reading Room.

THE CHRISTIAN SCIENCE MONITOR. For further information visit the Christian Science Reading Room.

Most Versatile Tractor Ever Built. FERGUSON. See Us Now For Details CRAIG BROS. 38 ARMSTRONG ST., BALLARAT. Phone 1029.

R.S.L. BOWLING CLUB ANNUAL MEETING. Prospects are bright for a successful season for the Ripon R.S.L. Bowling Club.

Seconded by the president, and carried. Mr. McIntosh moved that the subscription list round be £2/10 for R.S.L. and non-R.S.L. members.

See Us Now For Details CRAIG BROS. 38 ARMSTRONG ST., BALLARAT. Phone 1029.

Mr. Martin said it had been a very good year, but they were held up by accounts from the previous year; they had a motor for sale, which should bring them out about square.

The matter of fixing the ladies' fee was left in the hands of the Ladies' Auxiliary. The matter of a joining fee was deferred till next annual meeting.

E. J. STRICKLAND & SONS BALLARAT WOOL BROKERS. AUCTION SALES OF WOOL CONDUCTED AT REGULAR INTERVALS THROUGHOUT THE SEASON.

A letter was received from the secretary, apologizing for his absence, as he had been admitted to the Repatriation Hospital in Ballarat.

Mr. Sadtler suggested that an electric light tournament be held about the end of December. A recommendation to that effect was made to the committee.

JOHN DUNN Funeral Director. 246 BARKLY STREET, BALLARAT. REPRESENTATIVE AT MR. A. J. SAPIE.

Mr. H. J. Troy moved that the letter be sent to Mr. Robinson, expressing the hope that he would soon be restored to health.

Mr. Sadtler suggested that an electric light tournament be held about the end of December. A recommendation to that effect was made to the committee.

WARDROP "MY TAILOR" (2 Doors below City Hall) Phone 829. 215 Start Street BALLARAT. For All Men's Wear.

Mr. Sadtler suggested that an electric light tournament be held about the end of December. A recommendation to that effect was made to the committee.

Mr. Sadtler suggested that an electric light tournament be held about the end of December. A recommendation to that effect was made to the committee.

WARDROP "MY TAILOR" (2 Doors below City Hall) Phone 829. 215 Start Street BALLARAT. For All Men's Wear.

Mr. Sadtler suggested that an electric light tournament be held about the end of December. A recommendation to that effect was made to the committee.

Mr. Sadtler suggested that an electric light tournament be held about the end of December. A recommendation to that effect was made to the committee.

HARRIS' FAMOUS POWDERS FOR HEADACHE. POST FREE. WM. JACKSON, Chemist, BEAUFORT.

The Riponshire Advertiser. BEAUFORT. Registered at General Post Office, Melbourne, for transmission by post as a Newspaper. BEAUFORT, SATURDAY, NOV. 11, 1950.

BEAUFORT DISTRICT HOSPITAL AGRICULTURAL SOCIETY SCORES AGAIN. THIS SPACE RESERVED FOR A PHOTO OF THE NEW HOSPITAL. HAVE YOU SENT YOUR CONTRIBUTION ALONG?

COUGLE'S DRAPERY EMPORIUM. AXMINSTER RUGS (all Sizes). ACTIL SHEETS. QUALETA SHEETS. QUALETA PILLOW CASES. DICKIE'S TOWELS. KAYSER HOSIERY and LINGERIE.

CLARK & CROUCH FURNITURE MANUFACTURERS. ALL CLASSES OF FURNITURE. BUILT IN KITCHEN FITTINGS, LINEN PRESSES, Etc. PLEASE NOTE STRICTLY CASH.

COUGLE'S DRAPERY EMPORIUM. AXMINSTER RUGS (all Sizes). ACTIL SHEETS. QUALETA SHEETS. QUALETA PILLOW CASES. DICKIE'S TOWELS. KAYSER HOSIERY and LINGERIE.

J. de CONEY LADIES' HAIRDRESSING SALON. For All Your Beauty Treatments. "MARIQNY" COLD WAVE. JAMAL ENGLISH MACHINERY.

COUGLE'S DRAPERY EMPORIUM. AXMINSTER RUGS (all Sizes). ACTIL SHEETS. QUALETA SHEETS. QUALETA PILLOW CASES. DICKIE'S TOWELS. KAYSER HOSIERY and LINGERIE.

Wool. Consign Your WOOL AND PRODUCE to STRACHAN & CO. LTD. (Late STRACHAN, MURRAY & SHANNON LTD.) GEELONG. SPECIAL CARE GIVEN TO FARMERS' WOOL.

COUGLE'S DRAPERY EMPORIUM. AXMINSTER RUGS (all Sizes). ACTIL SHEETS. QUALETA SHEETS. QUALETA PILLOW CASES. DICKIE'S TOWELS. KAYSER HOSIERY and LINGERIE.

Wool. Consign Your WOOL AND PRODUCE to STRACHAN & CO. LTD. (Late STRACHAN, MURRAY & SHANNON LTD.) GEELONG. SPECIAL CARE GIVEN TO FARMERS' WOOL.

COUGLE'S DRAPERY EMPORIUM. AXMINSTER RUGS (all Sizes). ACTIL SHEETS. QUALETA SHEETS. QUALETA PILLOW CASES. DICKIE'S TOWELS. KAYSER HOSIERY and LINGERIE.

STUD STOCK OF DISTINCTION CHALLICUM BUANGOR VIC. CHALLICUM MERINGO STUD of Fine and Superfine Wool.

COUGLE'S DRAPERY EMPORIUM. AXMINSTER RUGS (all Sizes). ACTIL SHEETS. QUALETA SHEETS. QUALETA PILLOW CASES. DICKIE'S TOWELS. KAYSER HOSIERY and LINGERIE.

ELDER SMITH Opticians. BEAUFORT, MONDAY, DECEMBER 4th. From 11 a.m. to 4 p.m. Consult "C. & G." Qualified Opticians at the Mechanics' Institute.

Dennys, Lascelles Ltd. WOOL BROKERS, STOCK AND STATION, GRAIN AND SHIPPING AGENTS. HEAD OFFICE: GEELONG. Weekly Stock Sales Newmarket and Geelong.

SPRING-TIME BARGAINS

from BRIDGES HARDWARE

DINNER SET 30 DESIGNS 15 per cent. off MARKED PRICES.

FOWLER JARS 27, 31, 36, 14 BOOK NOW

AGEE JARS IN STOCK.

GARDEN HOSE, TOOLS, BARROWS, YATES' SEEDS, SCYTHES, SICKLES, FARM GATES, 10 - 12 - 14 ft.

BRIDGES HARDWARE PHONE 50. Includes images of PAVE-OIL and Berger Paint.

BRONCHIAL BALSAM

FOR COUGHS & COLDS IN CHILDREN AND ADULTS.

FOR SEVERE COLDS, BRONCHITIS OR INFLUENZA ASK FOR

Special Bronchitis Mixture

GRAHAM'S PHARMACY NEILL ST. BEAUFORT. PHONE 29

IN MEMORIAM

BATES. — Cherished memory of our loved father, passed away, 6/12/1940. Thou art thine forever.

McCRACKEN. — In loving memory of my dearly beloved wife and our loving mother, Florence May, departed this life November 11th, 1947.

RUTHERFORD. — In loving memory of our dear Uncle Bill, who passed away on the 9th November 1948.

Riponshire Advocate

ESTABLISHED 1874. Published every Saturday Morning.

SATURDAY, NOV. 11, 1950.

Local News and Notes

RAINFALL. — The rainfall for October was 286 points, and for 10 months 2276 points.

CARD SOCIAL. — The Beaufort F.B. Ladies' Club held a card social on Thursday night.

R.V.L.B. AUXILIARY. — At the monthly meeting of the Beaufort R.V.L.B. Auxiliary on 9th Nov.

RED CROSS. — At the annual meeting of the Red Cross Society held on October 17th in the Shire Hall.

OBITUARY. — MRS. ELLEN CONNELL. Old friends in Beaufort and district learned with regret of the death of Mrs Ellen Connell.

COMING SALES

The Gippsland & Northern Co. Op. Co. Ltd will hold a dispersal sale of 120 head of registered Jersey cattle at the Challum.

COMING SALES

The Victorian Producers' Co-operative Coy. Ltd and Australian Estates Ltd will hold an important clearing sale of stock plant and furniture at "Eumerella."

AGRICULTURAL SOCIETY

ANNUAL SHOW. (Continued from page 4).

Prizes, 3/6 and 1/6. Stewards: Messrs G. Whiting and M. Cuthbertson. Nine varieties of Cut Flowers.

URBAN FIRE BRIGADE

The November meeting of the Beaufort Urban Fire Brigade was held at the Fire Station on Monday night.

From Willaura Brigade, re inter-branch competition at Ararat on 10th Nov.

From Country Fire Authority, concerning annual demonstration at Bendigo.

Apparatus - officer Geo. Grant said if more did not turn up to practice, it was no use going to Ararat, Dimboola, or anywhere else.

Leut. Day said that for the past week attendance at practice had been quite good.

It was decided to invite representatives of the Shire Council and other local bodies.

Leut. Day reported on the school instructor's report at which a fine series of lectures and demonstrations was given.

It was also proposed to go in for a scheme of visual education by a library of films.

The Regional Officers were going to work closely with the brigades, and it would be close co-operation between urban and rural brigades.

Captain Duke thanked Lieut. Day for attending the school.

It was decided to book accommodation for the Burnie demonstration.

Foreman C. Stewart and Apparatus Officer G. Grant were appointed for pump duty for the month, and Firemen F. Duke and L. McGregor for hall duty.

A sad fatality occurred at Mt. Cole on Wednesday morning; the victim being Mr Robert Ramsay, a resident of Havelock Street, Beaufort, aged 67 years.

Senior-constable A. B. McIntosh, of Beaufort, made enquiries, and an inquest was formally opened on Wednesday.

BEAUFORT A.L.P.

At the meeting of the Beaufort A.L.P. on 15th Oct., presided over by Mr W. Beasley.

The Younger Set report shows the Infant Welfare Centre for the purpose of purchasing an electric refrigerator.

Our monthly meetings, including demonstrations, have been enjoyable, and we are indebted to the following: — Mesdames Mackinnon, Campbell, Little, Watkin, Myrtle, Mitchell, Russell, Matthews, Cross, Roper, Excell, and Cushing.

There has not been much activity by this Set during the last twelve months, owing to the small number of interested financial members.

Here are the Annual Report and Balance-sheet of the C.W.A. Younger Set for the year ending 31st October, 1950.

There has not been much activity by this Set during the last twelve months, owing to the small number of interested financial members.

Here are the Annual Report and Balance-sheet of the C.W.A. Younger Set for the year ending 31st October, 1950.

There has not been much activity by this Set during the last twelve months, owing to the small number of interested financial members.

Here are the Annual Report and Balance-sheet of the C.W.A. Younger Set for the year ending 31st October, 1950.

There has not been much activity by this Set during the last twelve months, owing to the small number of interested financial members.

Here are the Annual Report and Balance-sheet of the C.W.A. Younger Set for the year ending 31st October, 1950.

There has not been much activity by this Set during the last twelve months, owing to the small number of interested financial members.

Here are the Annual Report and Balance-sheet of the C.W.A. Younger Set for the year ending 31st October, 1950.

There has not been much activity by this Set during the last twelve months, owing to the small number of interested financial members.

Here are the Annual Report and Balance-sheet of the C.W.A. Younger Set for the year ending 31st October, 1950.

There has not been much activity by this Set during the last twelve months, owing to the small number of interested financial members.

The adopted British ex-prisoner of war. The Golden Thread Competition was won by Mrs J. McCreary.

An Infant Welfare Centre has been established, and the C.W.A. Committee is acting as a Club Room at the service of the Shire Council.

Our monthly meetings, including demonstrations, have been enjoyable, and we are indebted to the following: — Mesdames Mackinnon, Campbell, Little, Watkin, Myrtle, Mitchell, Russell, Matthews, Cross, Roper, Excell, and Cushing.

There has not been much activity by this Set during the last twelve months, owing to the small number of interested financial members.

Here are the Annual Report and Balance-sheet of the C.W.A. Younger Set for the year ending 31st October, 1950.

There has not been much activity by this Set during the last twelve months, owing to the small number of interested financial members.

Here are the Annual Report and Balance-sheet of the C.W.A. Younger Set for the year ending 31st October, 1950.

There has not been much activity by this Set during the last twelve months, owing to the small number of interested financial members.

Here are the Annual Report and Balance-sheet of the C.W.A. Younger Set for the year ending 31st October, 1950.

There has not been much activity by this Set during the last twelve months, owing to the small number of interested financial members.

Here are the Annual Report and Balance-sheet of the C.W.A. Younger Set for the year ending 31st October, 1950.

There has not been much activity by this Set during the last twelve months, owing to the small number of interested financial members.

Here are the Annual Report and Balance-sheet of the C.W.A. Younger Set for the year ending 31st October, 1950.

There has not been much activity by this Set during the last twelve months, owing to the small number of interested financial members.

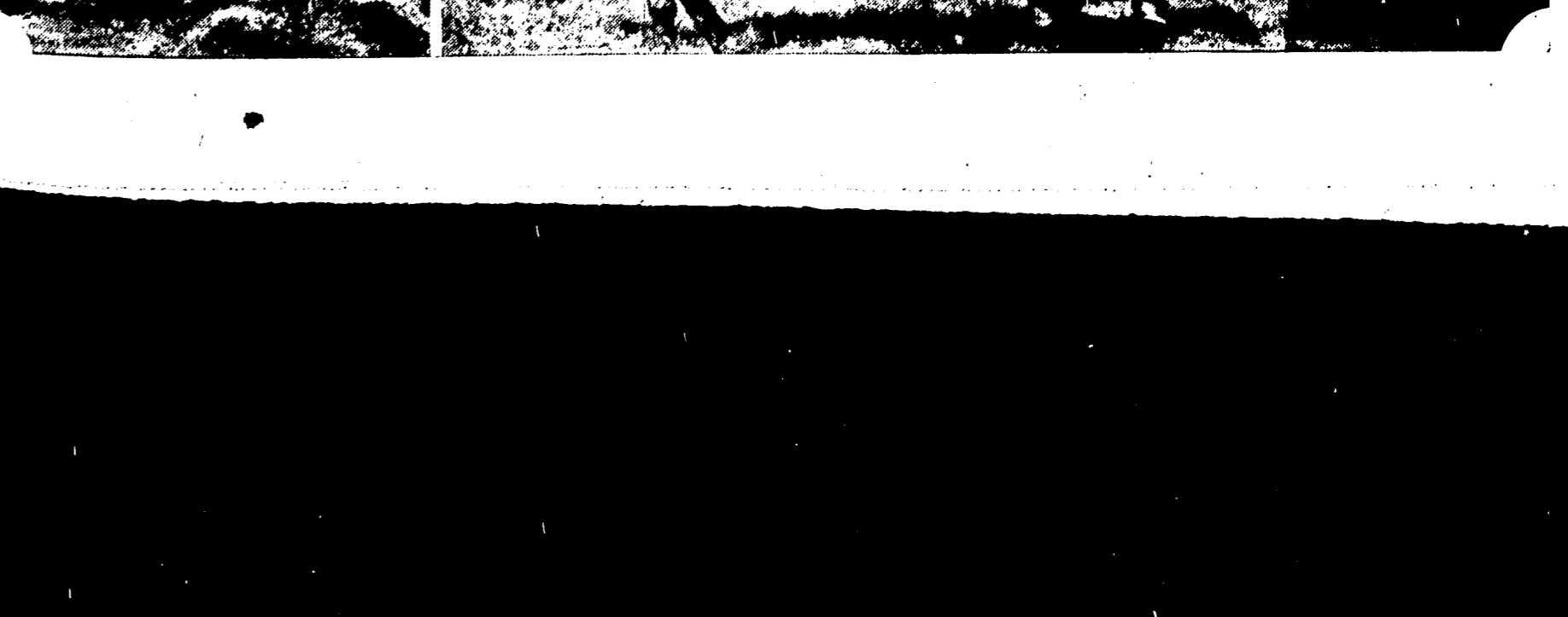
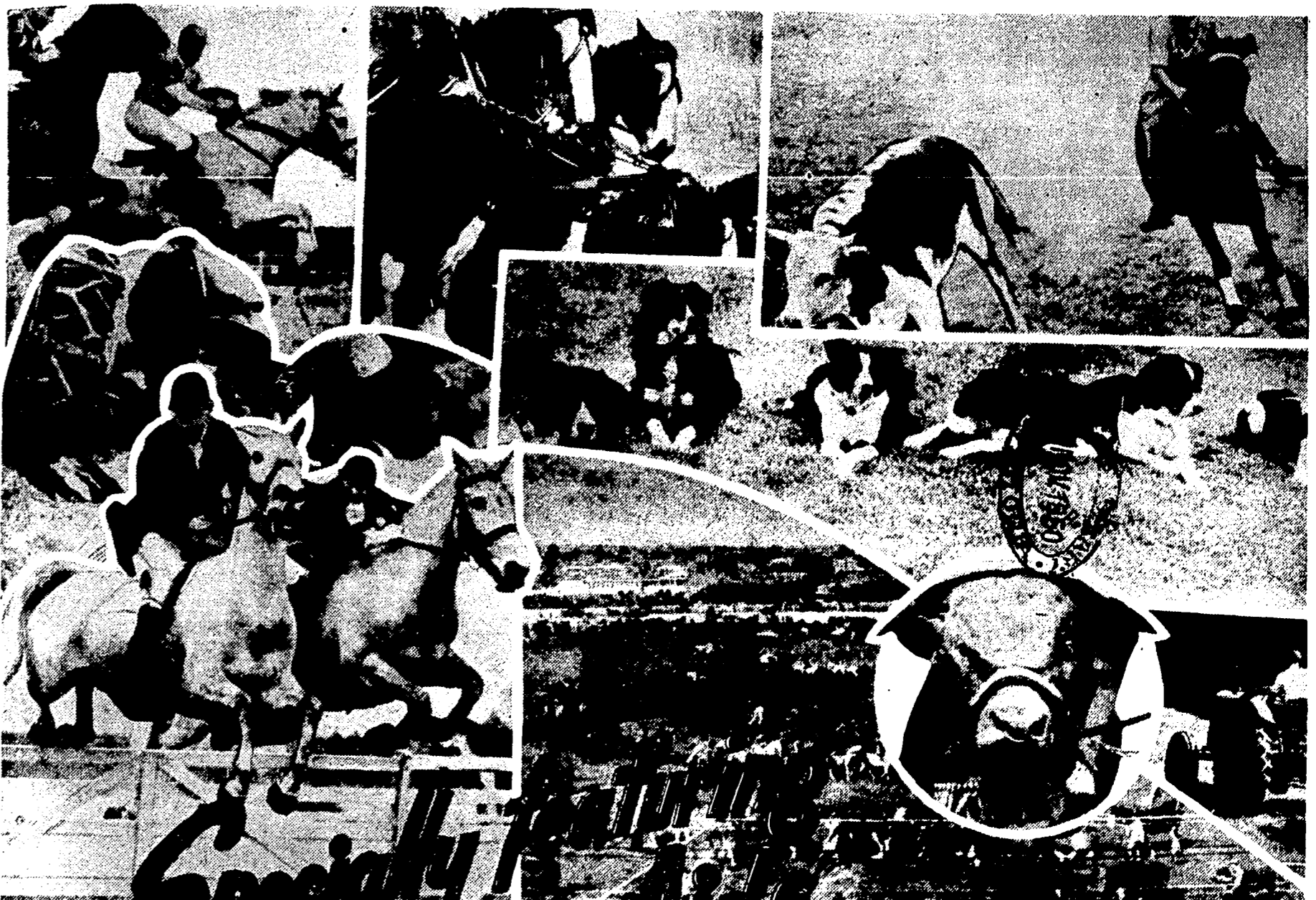
Here are the Annual Report and Balance-sheet of the C.W.A. Younger Set for the year ending 31st October, 1950.

There has not been much activity by this Set during the last twelve months, owing to the small number of interested financial members.

DIAMOND JUBILEE SHOW REVIEW MELBOURNE, 1950

A SPECIAL REVIEW OF THE ROYAL MELBOURNE SHOW

With The Compliments Of This Paper



BEAUFORT C.W.A.

REPORT FOR YEAR ENDING 31st OCTOBER, 1950.

Your Committee has pleasure in submitting the 23rd Annual Report and Balance-sheet of the Beaufort Branch C.W.A. for the year ending 31st Oct., 1950.

Financial members, 146. (Including one life member, Miss A. Stewart, Group President); average attendance, 89.

We regret the passing of Miss B. Lewis, a foundation member, past president, past Group President, and member of committee.

At the Xmas Party 127 members and visitors were present.

The 23rd Birthday Meeting of the Branch was held in September, 140 members and 127 attending. Xmas gifts were received from our Link.

At the Xmas Party 127 members and visitors were present.

The 23rd Birthday Meeting of the Branch was held in September, 140 members and 127 attending. Xmas gifts were received from our Link.

At the Xmas Party 127 members and visitors were present.

The 23rd Birthday Meeting of the Branch was held in September, 140 members and 127 attending. Xmas gifts were received from our Link.

STARS OF THE AIR: DORIS TURNER RETURNS TO AUSTRALIA

NOW back in Australia after twelve months abroad, during which she worked in radio and television, Melbourne vocalist Doris Turner is under exclusive contract to the A.B.C.

She met many film personalities, and lunched at M.G.M. and by the B.B.C. for a regular weekly session, "The Tuncful Tween" with Tolchard Evans.

Others she met included Rob. At the B.B.C. she worked with Frank Cannell and "The Jenkins' Orchestras, and appeared with Felix King's Band at the gold pen.

Others she met included Rob. At the B.B.C. she worked with Frank Cannell and "The Jenkins' Orchestras, and appeared with Felix King's Band at the gold pen.

## The BP Mechanical Bag Loader

A NEW BROGAN PATENT

The latest development in bag loaders is a mechanically-operated one designed and built by Nicholas, Brogan & Sons, of N.S.W. The outfit is simple in design, is entirely automatic, and is operated from the power take-off of the truck.

Mr. Brogan, who was himself a wheat-farmer in the Coonabaraban district of NSW, is a very practical man, and appreciates fully the numerous problems and difficulties which have to be overcome if a machine of this type is to be successful. He has been engaged now for several years in the

design and manufacture of various types of loaders, but has settled on the mechanical type as being the most suitable for average harvesting conditions.

The action of the new loader is entirely automatic. When a bag or similar object is placed in the cradle, a simple dog-clutch is engaged,

then by virtue of the linkage employed, the cradle starts moving upwards at a slow rate, speeds up towards the centre of the arc, and slows down to allow the bag to be lifted off.

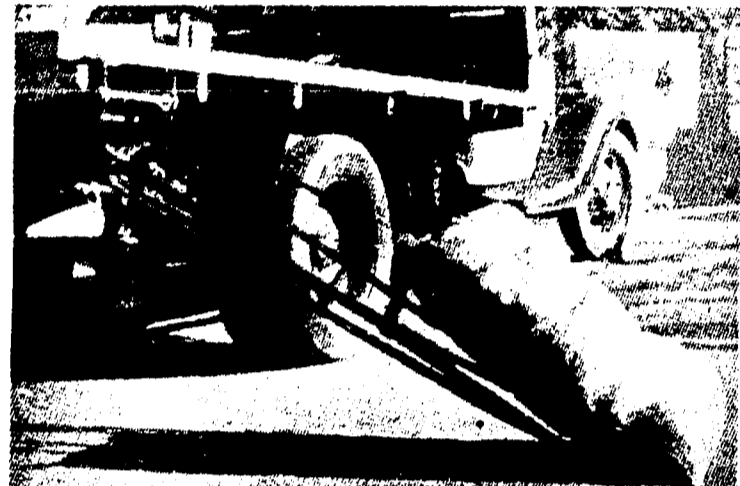
Although similar in appearance to a hydraulic bag loader, the BP Loader, as previously indicated, is operated mechanically. Power to operate it comes from the power take-off shaft of the truck through a roller chain and sprocket drive to a long shaft running back to the loader mechanism.

The bag frame used was designed so that it can be quickly detached. When the truck is loaded it may be thrown on top of the load, or left in readiness for the next trip.

Distribution of the BP mechanical bag loader will be through E. Anders & Sons, Box 5, Freeling, South Australia; 91 Carlton Crescent, Summer Hill, Sydney, NSW, and 260 Roslyn Street, West Melbourne, Victoria.



The BP Mechanical Bag Loader at the top of its lift. Note how the bag is taken to shoulder height. Mr. Nicholas Brogan, the patentee, is shown demonstrating this point.



The BP Mechanical Bag Loader with bag in position and ready to be elevated.

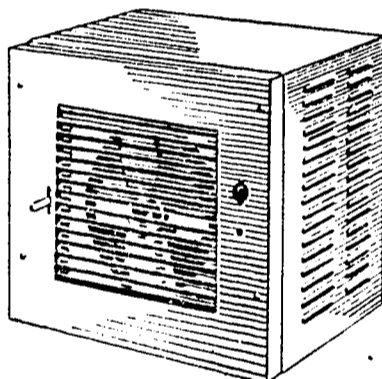
## ELDER SMITH & CO. LIMITED

449 BOURKE STREET, MELBOURNE.

Be cool and comfortable this summer—install a "BREEZAIRE"—the healthy, modern method of defeating "old man heat". "BREEZAIRE" is a new type of 'air conditioning' unit which provides maximum comfort by supplying a constant supply of fresh, cool air. Easy to install—and so economic—you can't be without a "BREEZAIRE" this summer.

Elder's are the Sole Distributors for "BREEZAIRE".

Please send me a pamphlet with further details of the "BREEZAIRE"  
NAME .....  
ADDRESS .....



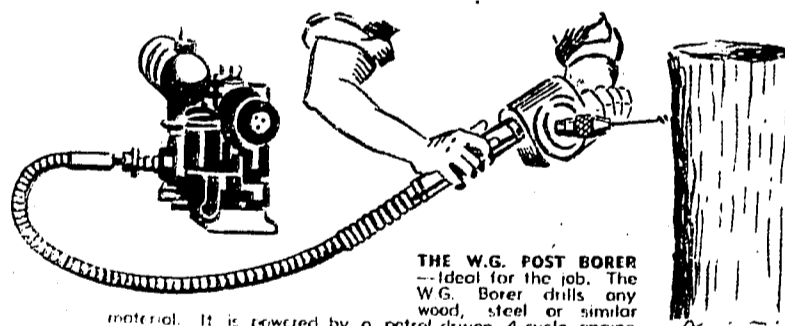
The amazing BREEZAIRE unit brings to your home the newest development in Cooling Systems. As shown, the Unit is a convenient size and can be installed economically. Its evaporating method will prove it the finest type of low cost cooling.

## Improve Your Property With Paint

NOW is the time to paint—the hot summer months are approaching—so make sure that you protect your property from the heat.

**BUFFALO**—Manufactured by British Points (Aust.) Pty. Ltd., a subsidiary of one of the largest paint manufacturers in the Empire.

**CHIEF**—The super quality product of Standard Paint & Oil Co. Ltd., who have been making paint in Australia since 1884.



**THE W.G. POST BORER**—Ideal for the job. The W.G. Borer drills any wood, steel or similar material. It is powered by a petrol-driven 4-cycle engine which develops 2,000 r.p.m. It is portable, 16 1/2 lbs. and complete, alternatively it can be fitted to any tractor. For further information write Elder's for details.



The hand piece is complete with hypodermic needle and drenching nozzle. It has rubber tubing and is marked as a measuring glass. See the Sayers gun in action. You'll be delighted.

# Elder's

**"CROMAC"**  
POST HOLE DIGGER  
Is a sturdy construction which can be fitted to power take-off of any tractor. It can dig to 3 feet.

**SHEEP DIPS**  
"Kymoc" the original "Dorris" Sheep Dip—For the control of Sheep Keds and Egg.  
Improved "Border Poxie Sheep Dip" containing "Gammexane"—completely effective against Lice or Keds.

## Cuts Ten Inches Diameter Of Timber In Ten Seconds

Improved Motorised Saw Speeds Up Timber Cutting

Farmers, woodcutters and timbermillers were interested in the performance of the "Stihl" Motorised chain-saw demonstrated at the Royal Agricultural Show at Stand 185. The saw was shown in various diameters up to 5 feet. Its high-speed cutting rate means getting the job done more quickly with greater ease and handling efficiency.

Eucalyptus, red gum, grey box, etc., all fall apart quickly under the high speed teeth of the cutting chain which is the feature of the "Stihl" chain saw.

The history of the motor chain saw goes back to the last century, when, during the 1890's, a patent for a motor saw with endless saw chain was granted to a German inventor. Later development came with patents taken out in England and, in 1910, a design for a portable chain saw was registered.

After the first world war many manufacturers improved the early designs, but the demand for motor saws remained small as the machines were cumbersome, difficult to service and uneconomical to run. In 1927, the Andreas Stihl factory commenced production of the new famous Stihl chain

the field with the co-operation of foresters and woodworkers. Under constant testing over many years, special petrol and electric motors were developed for use with the chain saw principle.

Before the second world war the motor saw had become an essential for saw millers and woodworkers and a great part of the market was monopolised by Stihl saws, which were sold throughout the world.

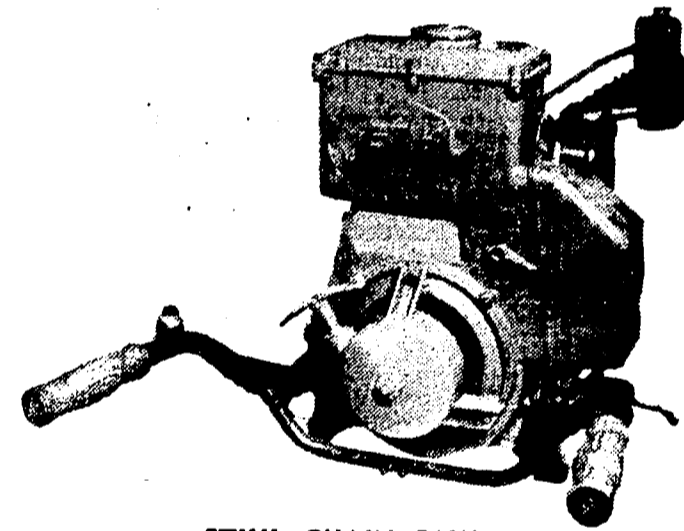
With shortages caused through the second world war, many firms started manufacturing motor saws, and features of the Stihl saw were incorporated into many of these machines. It can be said, however, that the pioneer work in the development of the motor saw was done in the Stihl works, where today chain crosscut

and the fitting of the rewind starters.

Stihl chain saws were first introduced to Australia in 1938, pioneering the market, and have proved themselves specially adapted for use with Australian timbers for which special cutting chains have been devised. Stihl chain saws are available for immediate delivery in the following sizes: 39in. 90lbs., 49in. 106lbs., 60in. 108lbs.; also one-man saws, 16 and 24 inch.

At Herbert Osborne Pty. Ltd., 567 Little Bourke Street, Melbourne.

(All enquiries will be promptly attended to)



STIHL CHAIN SAW

crosscut saws. This firm was responsible for most of the early development of the motor saw as it is known today.

The aim of the Stihl factory was to produce a motor saw that would be light and easy to handle, efficient and economical in running. Thousands of tests were made in the workshop and in

saws for use with petrol or electric drives are made which are unsurpassed anywhere in design or quality and workmanship.

Andreas Stihl are continually adding new features to their equipment. Examples of this are the use of special light weight alloys which keep the weight of the saws to an irreducible minimum.

## New Technique For Fodder Conservation

(Continued from Page 8)

shipping weight (approximately), 2,300 lb.  
**Extra Equipment:** Bale counter.  
Allis-Chalmers Manufacturing Co. reserves the right to make changes in or to add above specifications or to improve at any time without notice or obligation.  
Distributors of the Allis-Chalmers "Rotobaler"—Victoria and Southern Riverina: Mitchell & Co. Pty. Ltd., P.O. Box 20, West Pootersay; S.A.: John Shearer & Sons Pty. Ltd., Box 2, Kilkenny, South Australia. Phone: M7151 (4 lines); Queensland: Engineering Supply Co. of Aust. Ltd., Box 14117, G.P.O., Brisbane. Phone: B1171 (4 lines). Also at Townsville and Rockhampton; W.A.: The Westralian Farmers' Co-operative Ltd., Box M 978, G.P.O., Perth; Tasmania: A. G. Webster & Sons Ltd., Box 632, G.P.O., Hobart; N.Z.: Dominion Motors Pty. Ltd., 1 Courtenay Place, Wellington.

## STOCK THE BEST

Because your wardrobe deserves

## SPORTSCRAFT

For vacations, skiing, your local race meetings, tennis, golf, riding or almost any sport.

STOCK UP WITH:

SPORTSCRAFT SPORTSWEAR

- ★ SKIRTS
- ★ SLACKS
- ★ SHIRTS
- ★ JODHPURS
- ★ SHORTS
- ★ BLOUSES

ASK YOUR LOCAL STORE

Sportscraft Sportswear

245 LATROBE STREET, MELBOURNE

\* sow lucerne this spring

Lucerne is invaluable for fodder. Quick growing and rich in protein, it makes excellent hay; is very useful for controlled grazing, particularly in topping off young stock.

Lucerne is a perennial legume, which continues to grow throughout the summer, and being deep-rooted, and hardy, will resist drought and will greatly increase the fertility of the soil.

Cutting a Young Lucerne Stand.

Write today for Brunning's lucerne leaflet

For the RIGHT SEED at the RIGHT TIME

Brunning's leaflet tells you how to get the best results from sowing "Brunning's Super-grade Lucerne Seed."

**SPRING PASTURE SOWING.** NOW is the time to start, especially in the cooler districts, with a reliable rainfall. Let Brunning's assist you by submitting recommendations for grasses and clovers suitable to your district! Successful farmers use Brunning's Seeds for sowing.

Price list and information available on request.

**F.H. BRUNNING PTY. LTD.**

SUPPLIERS OF PASTURE, FARM & LAWN SEEDS SINCE 1852  
57 ELIZABETH STREET, MELBOURNE. Tel.: MB 1661  
(Postal Address: Box 857K, G.P.O., Melbourne)

Seeds

# Mows, Clears and is Jack-of-all-Trades

BRITISH-ENGINEERED MOTOR SCYTHE IMPRESSES

With a small but interesting exhibit in the Dairy Pavilion, the Allen Motor Scythe attracted attention from many property owners.

## TOTALLY ENCLOSED DRIVE

The "Allen" is a British-engineered machine made by the Allen Engineering Company of Oxford and is distributed throughout Australia by Scott Bonnar Pty. Ltd. The Allen Motor Scythe impressed as being the most efficient machine of its kind on this market, chiefly because of its extremely simple design, rugged construction, and the fact that its drive is totally enclosed in an oil bath which makes it suitable for Australian conditions, particularly in dry and dusty areas.

## EXTRA POWER

The "Allen" has a 1½-horse power motor—a slightly higher power rating than most of its competitors—and has truly remarkable ability to work over rough ground, hill sides, and even steep banks. The drive is to both wheels and cutter bar. A four-foot or three-foot cutter bar may be fitted as desired. It can be set either to right, left, or centre. When offset to the side the cutter bar allows mowing close up to orchard trees and fence lines. Speaking of orchards, this machine should prove most useful to orchardists because, in addition to clearing rank grass, ferns, blackberry, and other undergrowth with remarkable speed and economy, it may be converted to an all-purpose carrier by the fitting of a hardwood tray, capable of carrying loads up to 3 cwt., or the equivalent of seven fruit cases.

## PUMP, HAY SWEEP, HOE

Another attachment available is an efficient spray pump, throwing a spray up to 20ft. high and delivering 240 gallons per hour.

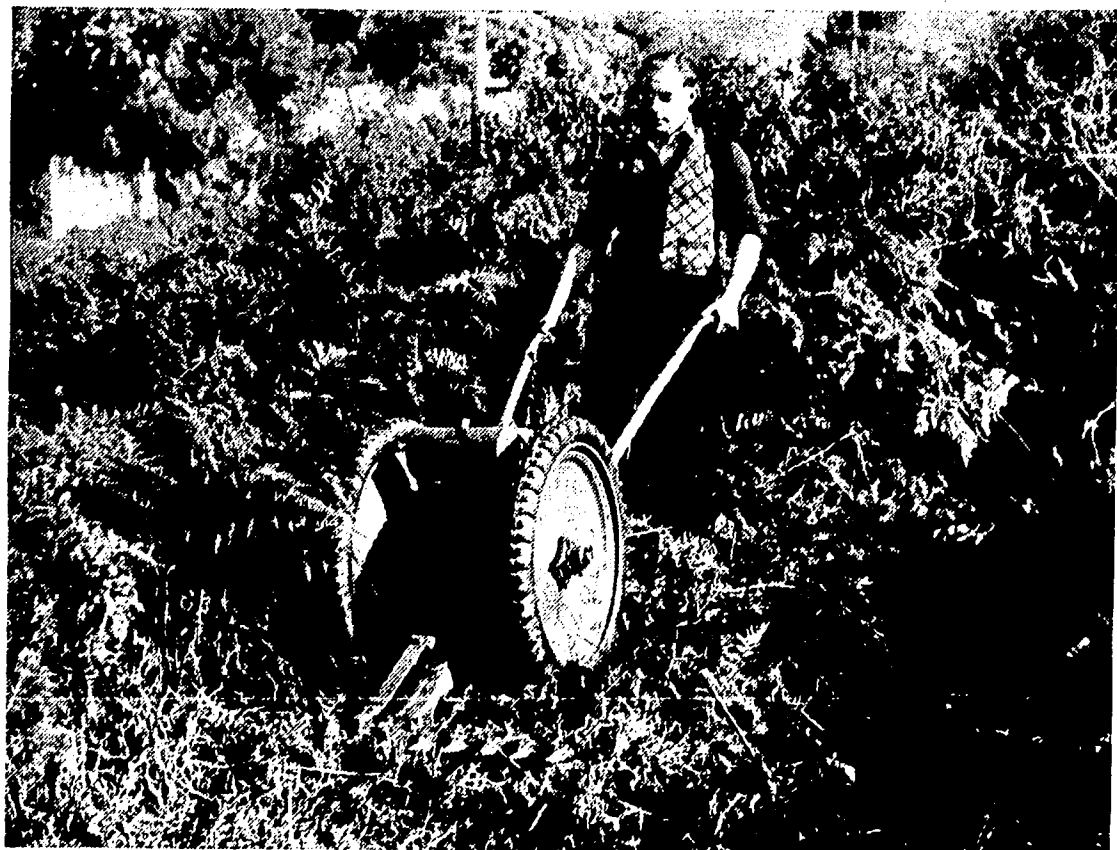
A further attachment is a hay sweep. This can be used for collecting fodder or clearing cut grass, etc., from fire breaks and in orchards.

The Allen motor scythe is also handy for the crop farmer and market gardener for all the uses outlined above, and it can also be used as a light hoe and cultivator.

## EASY TO HANDLE

In a recent demonstration of blackberry clearing, the "Allen" proved its efficiency and, above all, its extraordinary stability. The machine is so well balanced that a light hand on the steering sufficient to guide and swing the scythe in any direction. Even without a guiding hand the "Allen" will continue to mow on reasonably level ground. To demonstrate this it was set in motion through a patch of heavy blackberries, and the operator, having set the throttle, allowed the "Allen" to proceed under its own power. Entirely unattended, the machine went at a steady walking pace right through the blackberry patch, cutting the heavy canes to about one inch from the ground and emerging triumphantly on the far side of the patch, where the operator again took control.

(Continued on Page 5)



Clearing Ferns from Building Blocks with the "Allen" Motor Scythe.

## 8 FACTS

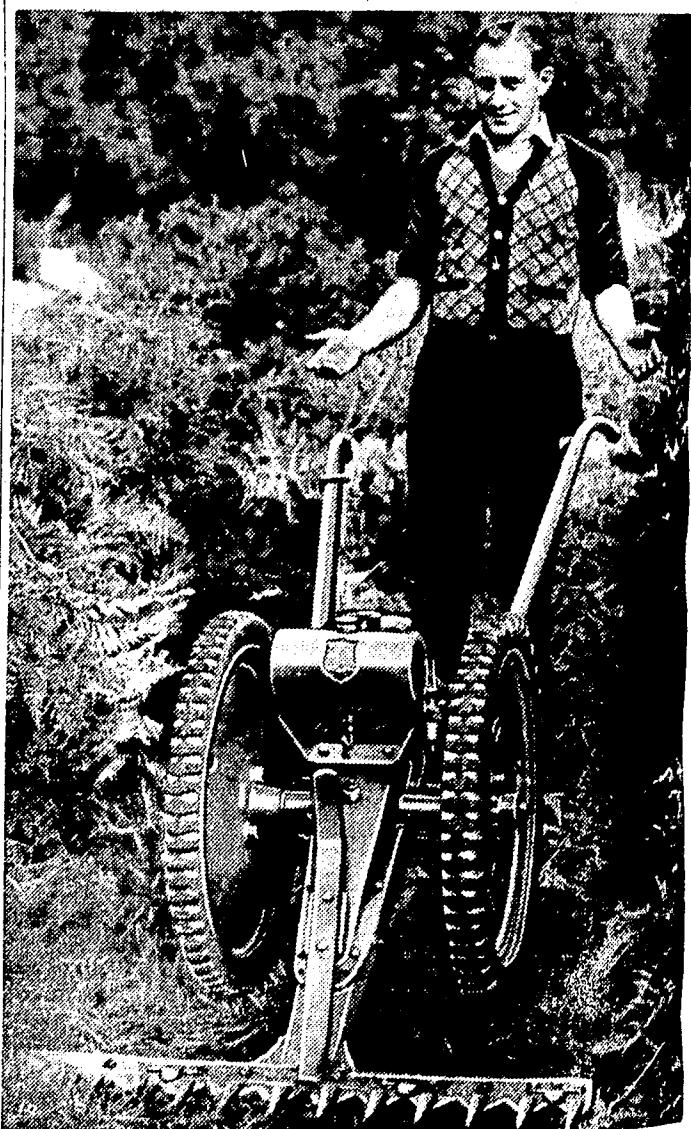
### SUPPORT N.Z.L. SERVICE TO THE PRIMARY PRODUCER

- Fat stock sent to us at Newmarket is drafted and displayed to the best advantage.
- All classes of stock, including Stud and Dairy Stock, for Private Sale. Lists available on application.
- Highest returns on Sheep and Furred Skins, Hides and Tallow. Forwarding labels sent free on application.
- For a bigger yield in every field sow N.Z.L. "Tested" Agricultural and Pastoral Seeds for Sowing.
- Now is the time to sell Grazing, Mixed Farms or Irrigation Properties. We have clients waiting to purchase. Inspection gladly arranged. Forward particulars to us.
- Merchandise Supplies—Cooper's Products.
- Travel well! Per N.Z.L. Travel Bureau. You make the plans, we make the bookings.
- Chief Agents and Attorneys for Palatine Insurance Co. Ltd., and Edinburgh Assurance Co. Ltd. Special Agents for The National Mutual Life Association of Australasia Ltd.

## NEW ZEALAND LOAN AND MERCANTILE AGENCY CO. LTD. (Inc. in Eng.)

538 COLLINS ST., MELB. - TELEPHONE MU 8801 TELEGRAMS "JARVIE", MELB.

With Sub-Branches and Agencies throughout Victoria and Riverina.



Look! No hands! Illustration shows the "Allen" Motor Scythe clearing building blocks in typical fern country. The scythe continues to move forward and mow even without a guiding hand — it's so well balanced.

## They Build them Big and Tough at the Skoda Factory

# SEPARATORS TO STEAMBOATS

Whether it's Motor Cars, Steam-rollers, Locomotives, Trains, Aeroplanes or Separators, the SKODA factory keeps up its tradition, fine precision engineering.

The nucleus of the concern represented by the mother undertaking at Pilsen was founded in 1869 by the second baronet Emil Skoda. As early as the 'eighties of the last century his steel works supplied castings for giant technical enterprises of that time to the whole world, e.g., the electric power plant on the Niagara Falls, the Suez Canal, castings and forgings for merchant ships.

The oldest engineering works that merged in the

Skoda works was the Ringhoffer factory in Prague, founded in 1771. This firm was a pioneer in building up the Czech agricultural industry, one of the oldest in Europe. The works erected numerous sugar factories, alcohol distilleries, and breweries.

The next engineering works which amalgamated with the Skoda works was the Ruston factory founded in 1832, whose activity in the steam technique dates back to the initial stage of the

steam engine era. In the course of time the factory extended its manufacturing programme to include river boats, steel structures and bridges, mining equipment, iron and steel works, cranes, excavators, cooling plants, etc.

The third in succession was the engineering works of Messrs. Marky, Brothovsky & Schulz at Hradec Kralove, founded in 1874. The works field of activity comprised the agricultural industry, electric power plants, etc.

The three firms united in 1911 and established "The Prague Engineering Company Limited formerly Skoda, Ruston Brothovsky & Ringhoffer". In 1921 the final merging of the aforementioned factories took place under the heading of "Limited Company formerly the Skoda works in Pilsen". In 1923, the shipyards at Komarno were acquired and in 1924 the steel works at Hradec were attached to the concern. In 1925 the largest Czech automobile factory of Messrs. Laurin & Klement, having been founded in 1895, merged in the Skoda works.

In 1927 the Skoda works acquired the oldest electro-engineering factory of Messrs. Bartelmus, Donat & Co. at Brno, founded in 1887, i.e., at the very beginning of the industrial electro-engineering sphere, and attached it to their own electro-engineering works in Pilsen.

In 1929 the factory of Messrs. Novak & Jahn specialized in the building of machinery equipment for distilleries, breweries, dairies, sugar factories and in the chemical industry was taken over by the Skoda works, in whose combine are also the

"Avia" Aircraft Factory, the "Kablo" cable and steel-ropes works at Kladno and "Konstruktiva" Builders Limited Company in Prague.

The Skoda have thus affiliated factories, which were pioneers in important branches of machine industry and possessed rich experience gained in the course of many decades.

Each department with its extensive manufacturing programme, represents an expert firm. The broad field of the commercial activity of the Skoda concern, with its branches and agencies all over the world, offers sufficient possibilities for further development of each individual department within the wide scope of the Skoda works activity. Several departments create the manufacturing basis common for all branches of the Skoda works. These are the steel and iron works, forges, gear wheel workshops, etc.

The well-known metallurgical works, forges and steel works supply their special material and semi-products, complying with the constructional requirements and operating conditions of the individual departments of the concern.

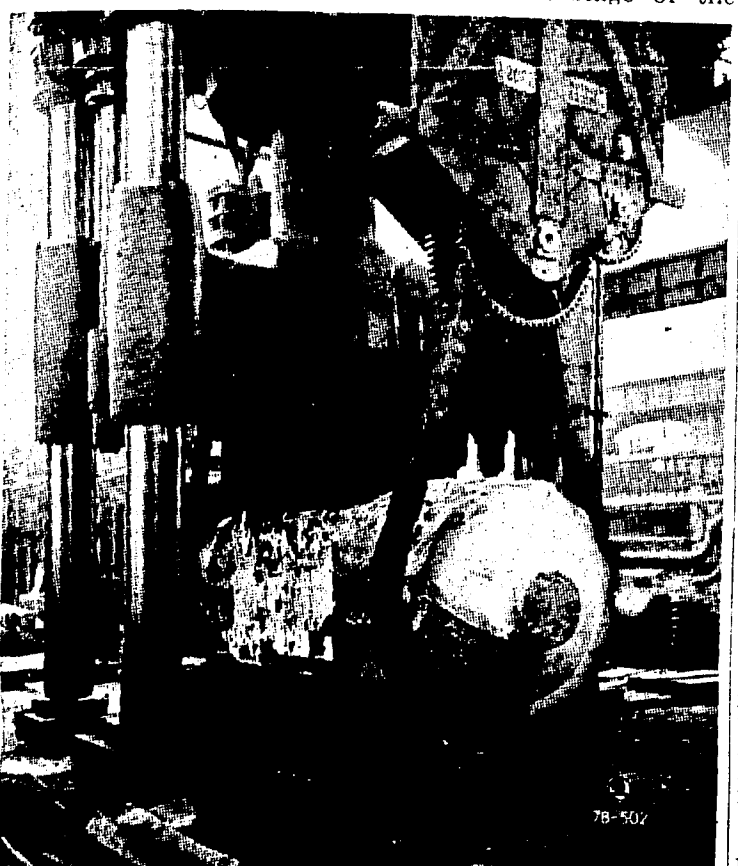
The employed gauge system and standardisation in conjunction with Skoda's own tool workshops permit of a far-reaching utilization of modern manufacturing methods, such as only large expert firms can attain. The

close co-operation of the testing and scientific Research Institute with its departments of applied mathematics, physics, machinery, chemistry and metallography conveys scientific methods to the individual branches which, in addition to experiences accumulated by the works in the course of many years, keep the Skoda products ahead of the technical progress. All machines and auxiliary equipment made by the Skoda works for supplies to complete industrial plants are manufactured in their own workshops and of material of their own.

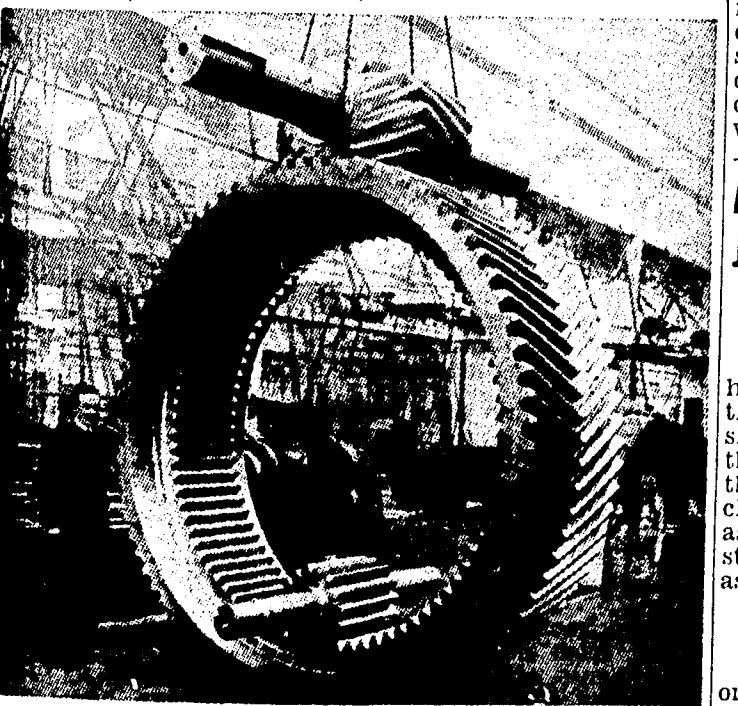
These circumstances enable Skoda to undertake a full guarantee of the quality and workmanship of the machinery supplied and economy of the plants installed.

The Skoda manufacturing programme, whose individual sections touch and complement one another, allows to maintain an efficient service of technical experts who are at the disposal of the client in the case of projects, erection, putting into operation and during the initial running of the plant.

In numerous countries the Skoda works have been pioneers in new industrial branches, which by the exploitation of the domestic raw material ensured their further economical development.



1. Forging on 85-ton block.



2. Forger gear rim with pinion, total weight 26 tons.



3. Butter churn with cream ripener.

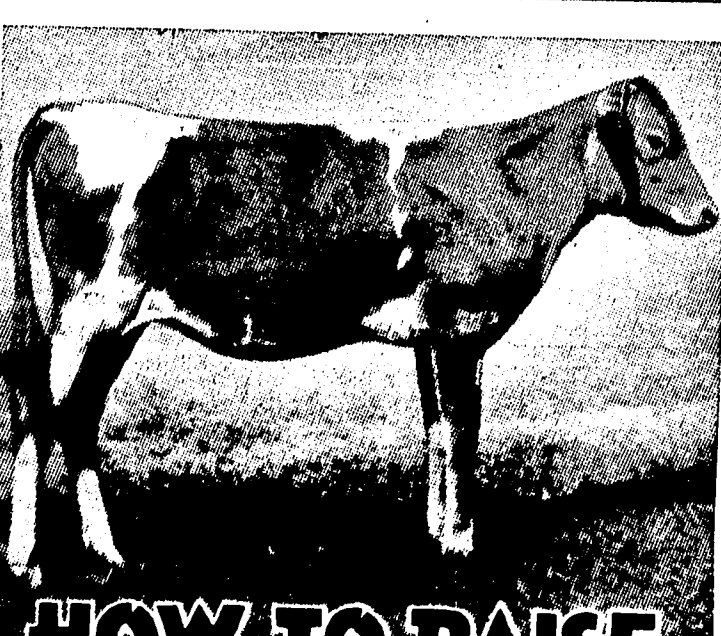
## Mows, Clears and is Jack-of-all-Trades

(Continued from Page 4)

**NO SKILL NEEDED**  
Any unskilled person can handle this scythe effectively. Its controls are simple, comprising only throttle lever and clutch throw-out. An automatic clutch comes into operation as soon as the cutter bar strikes an obstruction such as fencing wire.

## ECONOMY AND FIRST COST

In field tests mowing grass or green crops such as lucerne, the Allen has put up economy performances of one acre to 1-3rd gallon of petrol. Time taken to mow an acre is approximately two hours. The machine moves at a walking pace, which does not fatigue the operator. Purchase price of the Allen Motor Scythe is £119/10/- (tax free), and it should prove a most useful piece of equipment on any property where constant clearing and mowing is a factor, or for orchard work where fruit gathering and spraying are regular seasonal operations.



## HOW TO RAISE CALVES LIKE THIS

Well-grown heifers are the best asset you can possibly have, so invest a few shillings wisely on GRO-CALF! Skim milk alone does not constitute an adequate diet for calves, but the addition of a little Gro-Calf provides perfect nutrition, which is the basis of true growth. Don't be content to raise pot-bellied, stunted heifers—get full, natural growth and profitable production later on by feeding a little Gro-Calf.

## HOW TO USE GRO-CALF

While the calves are being weaned from whole milk, add Gro-Calf at the rate of 4 ozs. to each gallon of skim, and for weaned calves feed as follows: For calves at 4 weeks old, 6 ozs. Gro-Calf daily; at 5 weeks, 8 ozs. daily; at 6 weeks, 10 ozs.; at 7 weeks, 12 ozs.; at 8 weeks and on to maturity, 16 ozs. daily. Full directions are given with each bag.

Gro-Calf is a Grand Calf Food—Use it for Better Calves than You've Ever Had.

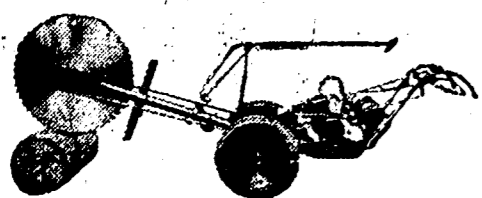
MELBOURNE PRICES: 100 lbs., 26/-; 50 lbs., 13/6.

CLARK, KING & CO. PTY. LTD.

237 Queen Street, Melbourne

Available from all Permevan Wright Branches and most good country stores.

## "New Record" Mobile Circular Saw and Tree Felling Machine



### ADVANTAGES OF THE "NEW RECORD"

- Powered by 520 C.C. 4-stroke "New Record" Petrol Engine—developing 7½ h.p.
- Operates saw blades to 44 inch diameter.
- Automatic releasing safety drive.
- Fitted with modern "Vec" belt drive, which eliminates complicated wearing gears and chains, ensuring durability, and reducing maintenance costs.
- Built to withstand rough bush work.
- Can be handled and operated by one man.

If your problem is Timber Cutting, consult "New Record" . . . Pioneers with half a century of experience in the making of Mechanical Timber Cutting Machinery.

New Record Machinery Co. Pty. Ltd.

108 JEFFCOTT STREET, WEST MELBOURNE  
Tel.: FJ 3905, FJ 3314 After Hours: FM 1969

Manufacturers of Drag Saws, Portable Circular Saw Benches, Concrete Mixers and Friction Hoists

## PRIMARY PRODUCERS BUY HEAVILY ON MECHANICAL FARM AIDS

Many firms exhibiting farm machinery at the Royal Agricultural Show have sold out for months ahead.

Realising that to increase their production and cultivate new acres, primary producers are turning more and more to mechanised farm machinery for assistance.

The machinery exhibits at the Royal Melbourne Show tell a strong story of improved efficiency. Acres that took weeks and weeks to plough can be cultivated in a few days. Fencing, clearing, reaping, sowing, timber cutting, cultivating, shearing, milking, hauling, etc., are all taken care of by high speed mechanised farming devices which are setting up an entirely new picture for production in the rural industry. Farming is no longer measured by the capacity of the farmer and his employees' ability to manually work their holdings. Manual labor hours have been outpaced a hundred-fold by up-to-date machinery, and farmers who buy modern plant are not just entering into a spree of luxury buying, they are doing what most industrial businesses have been doing for years—using their capital for improving production and cutting costs.

The speeding up of farm production is not only a number one priority in modern primary industry, but is essential to the nation's export progress and consequent economic stability.

## RECORD SALES FOR FARM MACHINERY

Visiting farmers showed keen interest in the exhibit of Sunshine farm machinery and tractors. Several entirely new lines were on show and a number of new features incorporated in established machines. Show bookings constituted a record.

The Sunshine Massey Harris No. 744D Diesel Tractor was a centre of interest throughout. Farmers appreciated the fine points of this popular tractor which has a rated horsepower of 29 drawbar, 36 belt, and a maximum of 39/42. Those already owning a "744D" confirmed its remarkable fuel economy—"one gallon of diesel distillate per hour on normal farm work, up to 1½ gallons on heavy jobs." Inquirers were pleased to note the electric starting, with provision for very cold weather and the sturdy transmission designed to transmit every possible ounce of engine power. Not least of the 744's favored points was the hydraulic velvet-ride seat. To get off a tractor after a long day's ploughing without feeling stiff and sore is something really worth while.

An entirely new implement, the Sunmaster offset Tandem-disc Harrow excited favorable comment from orchardists and farmers alike. Many orders were booked for this useful machine, for both orchard and open field cultivation. One of its main features is rigidity in working. Front and rear gangs are joined by a heavy pivot and connected by a square bar which operates in slides as the gangs open or close—a combination which prevents any horizontal movement between the gangs. The Sunmaster is made in 10, 12, 16, and 20-disc sizes. With patented extensions, an extra disc can be fitted to either or both ends of each gang—there is a choice of sizes up to 24-disc and of three different cutting widths with each machine. For orchard and vineyard work, the 10 and 12-disc Sunmasters are fitted for automatic right-hand turning—a real boon. The machine hitches to right or left of the tractor and offsets well. It can be operated

right up to the trunks of trees. Another important point is that it gives a level surface, free from ridging. The furrow left at the offside can be filled in neatly on the following round. Both scalloped and plain discs, 20-inch and 22-inch diameter are used. Disc bearings are made from metal of special formula, intensely hard for resistance to wear. They are equipped with pressure lubrication.

The Sunshine Pickup Baler continued to attract as much attention as in the previous few years since its introduction. Hundreds of these big machines are now in the hands of farmers and contractors, making a real contribution to meeting the ever-growing need for greater reserves of fodder. This year, the centre of interest was the working exhibit of the automatic knotter, tying strong, perfect "figure-8" knots in the baling wire easily and regularly.

The Sunmaster is already self-feeding and automatic-threading. With the automatic knotter it is fully mechanical, requiring only the tractor driver to produce up to five tons of tight, heavy bales per hour.

The knotters is simple and free from complicated adjustments, easily removed or replaced, and easily serviced. Unfortunately, the number of knotters which can be produced is already overbooked, and, because of the existing labor situation, it is difficult to foresee when the heavy demand can be fulfilled.

The baler illustrated is fitted with cutter bar, 6ft. 9in. wide (exclusive to the Sunshine machine) for cutting and baling standing dry crops in one direct operation. Wheat, rice, and oat straw are in demand for packing,

animal bedding, and the manufacture of cardboard and paper, but prices were often unprofitable against the high labor costs of old methods of baling. Now more and more farmers are having their stubble baled by contract, and banking an added profit from their crop.

Another new Sunshine introduction was the Sunwinch rope-operated lift for Suntypes and Sunshine Drill (12 to 20-row sizes), also Sundercuts and Sunderseeders. Numerous orders were booked by farmers who tried it at the Show and found it fulfilled its claims to be the easiest as well as the handiest means of raising or lowering these machines.

The rope runs through a front pulley on a spring-loaded front upright and round a drum with automatically releasing brake mounted on the machine. The ropes are always at the driver's hand, ready without stopping or looking, for raising or lowering—completely or inch by inch as required. The drum spindle is geared to the rack-operating pinion and is connected by rack and lever to the floats on the drill, or to existing levers on the Sundercut and Sunderseeder. The lift is easily fitted to machines in the field.

Other Sunshine machines exhibited—too numerous to list—catered for almost every branch of agriculture, and full information is readily available from Sunshine agents or direct from the manufacturers.

## NEW PORTABLE POST-DRILLER BOON TO FENCERS

"Petroflex" speeds up fencing and provides powerised workshop fittings where electricity is not available.

In a normal days work with this unit, 200 7-strand erected fence posts can be drilled—drilling a 1½ in. hole through a 6 in. post takes only 6 to 8 seconds.

The old Brace and Bit method of drilling posts is now outmoded with the advent of the "Petroflex" unit.

Powered by a 1 H.P. 4 cycle "JAP" or "Villiers" petrol engine, operating for 8 to 10 hours on one gallon of petrol, and mounted on solid rubber wheels, it is a truly portable tool.

An 8 ft. 6 in. heavy-duty steel flexible shaft, with rubberised casing, is standard equipment. Driving core is made from strands of spring steel piano wire built up in layers to 1 in. diameter, and provides maximum strength whilst maintaining flexibility.

To the end of the shaft is screwed a heavy duty ball bearing mounted, geared drilling Headpiece, fitted with 10 to 1 ratio worm reduction gears providing a drilling speed of approximately 250 r.p.m. The worm gearing of this unit positively eliminates any jamming in green, half green, or dry timbers of any variety. Wood bits

### General Workshop Fittings

To make the "Petroflex" outfit a truly portable workshop, the following additional fittings have

been developed and may be purchased individually. All fittings are precision built, mounted on flexible shaft in lieu of drilling box. Operating speed, approximately 2,500 r.p.m.

### DOUBLE-HANDED GRINDING HEADPIECE:

Takes 6 in. to 8 in. diameter by 1 in. face grinding wheels and is highly suitable for sharpening disc ploughshares, rotary hoe or chaff-cutter blades. Can also be used as

or fitted with 8 in. circular saw blade or circular wire brush.

0-1 IN. CHUCK-TYPE HAND-PIECE:

For general drilling with high speed metal drills. Often eliminating the need of dismantling an assembly to drill a hole in any part. Wire brushes for descaling and removing rust may be used in conjunction with this fitting. Also suitable for drilling droppers with high-speed drills.

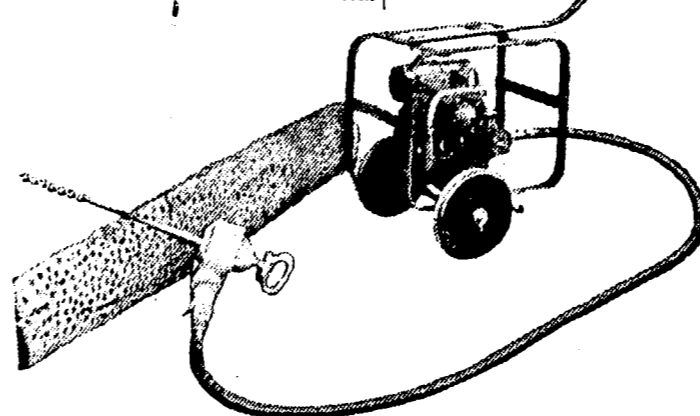
### RIGHT-ANGLE SANDING/ POLISHING BOX:

Supplied complete with rubber pad, this box is used throughout industry for sanding panels of vehicles, all metal surfaces and for wood, etc. Lambwool bonnets are fitted for cutting and polishing vehicles.

### ROTARY WATER PUMP:

A Rotary Water Pump with a capacity of 2,500 G.P.H. can be easily fitted by disconnecting the shaft at the engine end.

"Petroflex" is distributed by Rotary Tools Pty. Ltd., 595 Elizabeth Street, Melbourne, who will forward prices on further information on application.



The "Petroflex" Post-Drilling machine and Portable Workshop.

## ICEMASTER

THE MOST COMPLETE KEROSENE REFRIGERATOR EVER BUILT

All the benefits of dependable refrigeration are made available to even the most isolated homes by the magnificent big new Icemaster. It provides generous, safe storage wherever food has to be bought in quantity. It makes the ice-blocks and iced desserts that mean so much in areas where heat is prevalent and protracted. And Icemaster is built and engineered to make its grand benefits available for many long years to come.

### With Every Feature An Outright Winner

• Easy-to-clean, porcelain enamelled interior has rounded corners, stain-resisting bottom.

• Easy action combination handle-latch is readily adjustable to ensure constant secure closure.

• Covered Crisper keeps fruits and vegetables crisply moist, fresh and flavoursome.

• Glass chilling tray, just beneath evaporator, allows low temperature storage for fish, meat.

• Stainless steel door trim has no dirt-collecting screw heads. Positive cold-seal.

• Evaporator has three ice-cube trays, ample shelf-area for frozen desserts.

DEALERS IN ALL LARGE TOWNS

Distributed by:

KELVINATOR AUSTRALIA LIMITED

WILLIAMSTOWN ROAD, PORT MELBOURNE  
MJ 1311

Only the best of materials and most competent engineering skill are good enough to create Icemaster. It is built by Australians from data drawn exclusively from the widest knowledge of Australian needs and conditions.

AT LAST! NON-ELECTRICAL AREAS CAN HAVE Everything IN MODERN REFRIGERATION



At last you can have Kerosene Refrigeration that combines every advantage—more storage capacity, more economy, more icemaking, more beauty—with Icemaster, the refrigerator that is as easy and economical to operate as a kerosene lamp!

AND MORE OF EVERYTHING IN FEATURES, CONSTRUCTION AND RELIABILITY

Icemaster

AUSTRALIA'S LATEST AND BEST KEROSENE REFRIGERATOR

# New Technique for Fodder Conservation

## THE ALLIS-CHALMERS ROTOBALER

To be able to roll up a window of hay just as you would a hall carpet has been made possible by the introduction of the Allis-Chalmers "Rotobaler."

This machine, in which all motions are rotary, picks up the hay in the orthodox manner. First it passes it through rollers where it is compressed into a compact layer; from the rollers, it is passed into a baling chamber, where bale-forming bands, travelling in opposite directions, start the material rolling into a compact bale. These bands open up and as-

sume a new shape as the size of the bale grows; and when the bale reaches the desired size, the conveyor automatically stops feeding material in, and the bale is twine-wrapped and ejected.

All operations are completely automatic, and the only man on the job is the tractor-driver.

Amongst the claims made for the rolled bale as produced by this machine are:

(1) More leaves are saved, thus improving the feed value of the hay.

(2) Being twine-wrapped and not tied, the use of knots

and needles is unnecessary.

(3) The rolled bale surprisingly makes it possible to store more hay in a given cubic area than is the case with conventional rectangular bales, due to the greater density that can be secured.

(4) The rolled bale, as well as being easy to handle, is less trouble to "feed out" than conventional square bales, as, after the twine has been cut, it is only a matter of unrolling it.

The bales produced by this machine are 36 inches long,

but diameter and weight can be varied to produce the size of bale desired. One adjustment regulates the diameter of the bale within a range of 14 to 22 inches. Another regulates density to produce either a tightly rolled bale or one more loosely constructed.

With these two adjustments, bales weighing anything from 40 to 100 or more pounds can be produced. In most hay territories, the preference seems to be for bales of 17 to 18 inches in diameter, weighing from 60 to 70 pounds.

Reports coming from users of the Allis-Chalmers "Rotobaler" indicate that it leaves little to be desired. Mr. A. Silvester, of "Talisker," Merino, Victoria, reports that his machine has pressed some 23,000 bales up to date (about 73 tons estimate) with an average baling rate of about four tons per hour.

This was on hillsides and in paddocks from 12 to 15 acres in size.

Mr. W. Barber, of Launching Place, Victoria, reports having pressed some 19,800 bales with his machine under contract, and all those for whom he pressed were most pleased with the product. In Mr. Barber's case, the cost of twine worked out to less than 1d. per bale.

Another satisfied Victorian user is Mr. A. E. Cozons, of "Chilton." Anaki. Mr. Cozons has now produced some 6,000 bales of grass hay with his machine, comprising sub-Clover and Wimmera rye grass. He has also produced 500 bales of oaten hay and 1,600 bales of straw. The grass hay went in about 40 bales to the ton, oaten hay about 25 bales per ton, and the straw about 56 bales per ton. Mr. Cozons says that he finds the bales very easily

**Power to Operate:** Source of power, tractor, through power take-off (no auxiliary engine); power requirement, any tractor of 25 h.p. and over; PTO speed (optional), up to 600 r.p.m.

**Drives:** V-belt, 1; chains (exclusive of pick-up riddle) 2; gear boxes (steel cut, case hardened gears in oil), 2.

**Air Tyres:** Number used, 2; size, 5.50 x 16; ply, 4.

**Anti-Friction Bearings:** Number used, 24.

**Slip Clutches:** Number used, 3.

**Baler Capacity:** Tons per hour, 4 to 8 tons.

**Twine Wrapped Bale (not tied):** Twine used, Standard Binder Twine; how applied, spirally wrapped (no knot-tyers or needles); amount used per bale (optional), 27 to 45 ft.; tons baled per ball (average), 3 to 4 tons; twine box capacity, four 8-lb. balls.

**Roller Bale - Forming Bands:** Number, 6; width, 5 1/2 in.; length, 72 in.

**Pick-Up Conveyor:** Width—at pick-up, 6 ft.; width at rear, 3 ft. height of lift—for transport, 12 in.; type of pick-up, chain riddle; pick-up diameter (lift of wind-row), 9 in.

**Upper Bale - Forming Bands:** Number, 6; width, 5 1/2 in.; length, 72 in.

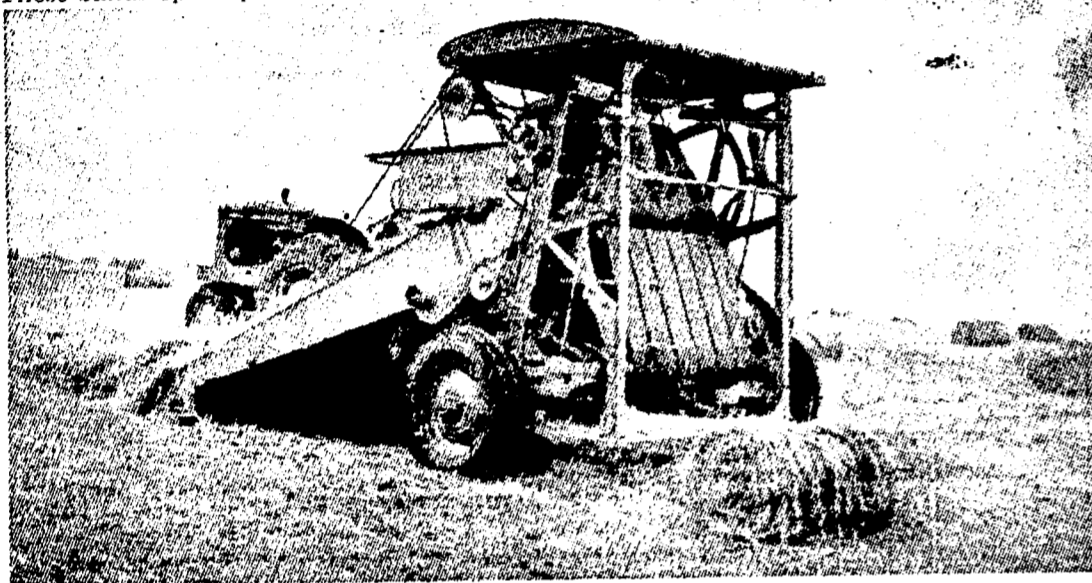
**Lower Bale - Forming Bands:** Number, 6; width, 5 1/2 in.; length, 102 in.

**Bale Compression Method:** Rolled under pressure (between forming bands).

**Roller Bale:** Length, 36 in.; diameter (optional), 14 to 22 in.; weight (optional), 40 lb. to 100 lb.

**Overall Dimensions:** Width for field operation, 9 ft. 10 in.; width for transport, 8 ft. 10 in.; range of swinging tongue adjustment, 33 in.; overall length, 13 ft. 6 in.; overall height, 6 ft. 11 in.

(Continued on Page 7)



The Allis-Chalmers Rotobaler.

The Car you have been waiting for . . .



## The SKODA CONVERTIBLE

This beautiful car will make you the envy of every other motorist.

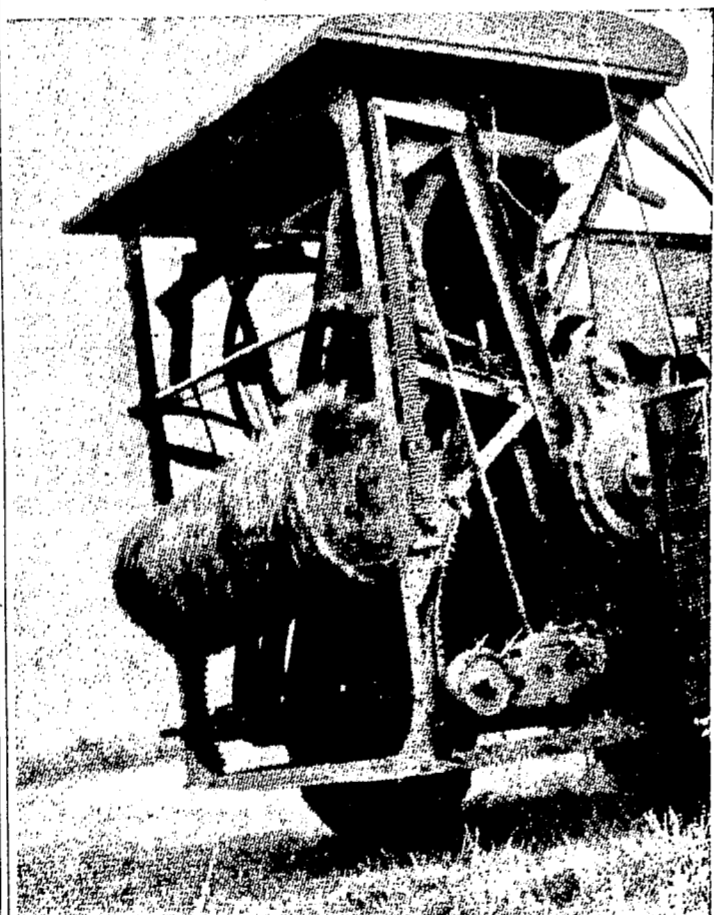
A limited number is available for immediate delivery.

Agents wanted where not represented for

**SKODA DISTRIBUTORS Pty. Ltd.**

307-311 LATROBE STREET, MELBOURNE

MU 3954



Close-up view of the Allis-Chalmers Rotobaler showing a complete twine-wrapped bale being ejected.

handled, and that they stack well in hay-sheds.

Mr. J. J. Grey, of "Westbury Park," Moe, Victoria, also reports favourably on his machine. It has now handled over 10,000 bales, and its best effort was 550

**Overall Dimensions:** Width for field operation, 9 ft. 10 in.; width for transport, 8 ft. 10 in.; range of swinging tongue adjustment, 33 in.; overall length, 13 ft. 6 in.; overall height, 6 ft. 11 in.

(Continued on Page 7)

# PASTURE

## The Backbone of Australia's Welfare and Economy

Pasture is by far Australia's greatest and most important single crop, for upon its development depend all our primary livestock industries. In years gone by, due mainly to misunderstanding of certain fundamental factors, vast and costly mistakes have been made, resulting in improper land utilization followed by low production and unsatisfactory financial returns. Because pasture is the cheapest and most suitable livestock feed, the aim must be to economically produce and maintain production of high quality feed to meet the requirements of the stock from season to season, at the same time preserving and building up soil fertility by proper management. The ley farming principle should be the basis of cropping programmes, because it is the only way to naturally protect the soil and gain the highest yields. The tremendous variation in soils, climate and rainfall throughout this country determines wide variation in farming technique.

When establishing and improving pastures, careful consideration must be given in selecting the most suitable species, and strain, for the locality. The usual district practices will provide a guide in Pasture work, and the amount of seed bed preparation will depend upon the species being introduced; for example Wimmera Rye-grass and Subterranean Clover will germinate under fairly rough conditions, while Phalaris Tuberosa and White Clover usually need careful soil preparation. Where soil fertility is very low, it is often a wise plan to first introduce Subterranean Clover and when soil texture and fertility improves, then lightly drill in grasses. A legume should always be included in a pasture mixture to maintain high soil fertility and a balanced stock fodder.

**Pasture Provides Your Profit**  
Within the last few years, tremendous progress has been made, and to-day, with advanced scientific practices, there is great scope for improving the products and carrying capacity of our soils. Rotational controlled grazing of stock keeps them in the best possible condition and allows maximum production from pastures. Under this system, pasture growth can be fed off at the most nutritious stage, say

3 in. to 6 in. high, then allowed to recover. However, should growth become very "sappy" it is advisable to supply hay, preferably in the form of long chaff fed from a self feeder, or for stock to have access to a dry paddock, such as stubble or unimproved country.

Grazing influences pastures in many ways, depending on the type of stock carried, and length of time stock are allowed run of the pasture. As a general rule, it can be expected that during Spring many grasses will stool out and grow so quickly as to shade the clovers. If this is allowed to continue unchecked, then grasses will tend to become dominant. On the other hand, continual close grazing will so affect the grasses as to make the clover dominant, and also prevent the root systems of the various plants becoming properly developed.

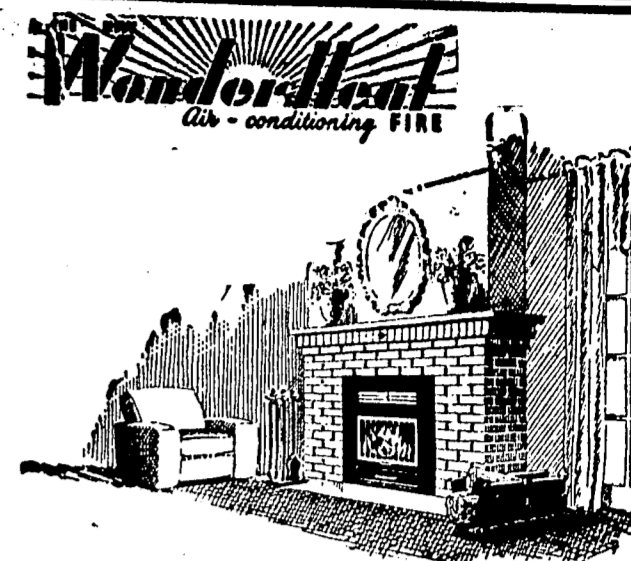
## SCIENTIFIC, MODERN HOME HEATING

Outstanding in modern home heating, the Wonder-Heat Unit presents all the advantages of Air-Conditioning whilst retaining the cheerfulness of the traditional open fire.

Infinitely more than the ordinary fire grate, Wonder-Heat draws fresh air from outside, warms it through a series of ducts and fins—then circulates it evenly throughout the room or rooms to be heated. Wonder-Heat not only offers a better heat—it actually costs less, ensuring FOUR times more

heat from ANY fuel. The clear armour plate glass door allows a full view of the fire and provides perfect safety from sparks and fumes—makes cleaning a simple matter of emptying the ash-pan. Wonder-Heat, as a complete unit, is simply installed in new homes and can, with equal success, be applied to old type fireplaces.

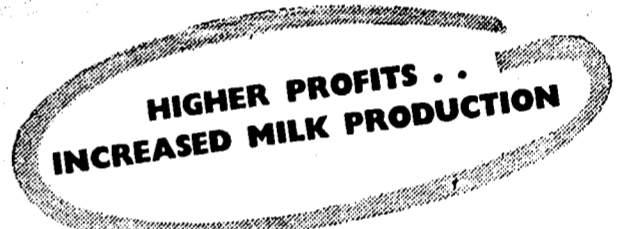
THE NEW  
**Wonder-Heat**  
Air-conditioning FIRE



Architects and home owners have readily appreciated the patented "fresh air" principle of Wonder-Heat, its exceedingly high efficiency, economy of operation, beauty of line, and ability to burn ANY fuel.

Last winter even the large resources of our factory organization were unable to keep pace with the phenomenal public demand for Wonder-Heat, and we strongly recommend that you order NOW to ensure a healthy, comfortably heated home next winter.

Full particulars and illustrated pamphlets from  
**Wonder-Heat**  
PTY. LTD.  
254 Auburn Road Hawthorn  
Tel. WB 2217



WHEN YOU INSTALL

## ALFA-LAVAL

### MODERN DAIRY EQUIPMENT

ESTABLISHED IN 1878 — STILL SERVING THE WORLD

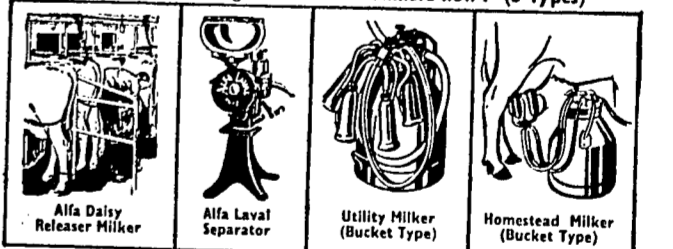
### ALFA-DAISY MILKER

For faster, cleaner milking and greater milk production, install the reliable Alfa Daisy Milker, now available for prompt delivery.

ALFA-DAISY MILKERS incorporate these outstanding features:

- ROTARY VACUUM PUMP**  
Maintains a constant vacuum. No reciprocating parts or vibration.
- UNIFORM MILKING**  
Every unit operates from its own pulsator which acts with split-second precision resulting in efficient, faster milking.
- STREAMLINED DIE CAST TEAT CUPS**  
Self-adjusting to fit any size teat snugly.
- TURNABLE RELEASER**  
Specially designed for distributing the milk in any direction—streamlined for quick, easy cleaning.

Inspect the full range of Alfa-Laval Milkers now! (3 Types)



Keep in mind the fine range of Alfa-Laval Cream Separators, also available for immediate delivery. For all the cream—all the time, your choice should be Alfa-Laval; established for over 70 years.

Write for a free copy of "Dairy Science Radio Talks," a handy reference book devoted to the advancement of Australia's Dairy Industry.

## ALFA-LAVAL

Separator Co. (V.), 547 Flinders St., Melbourne, C.I. Phone MU 6837



# TRACTORS SPEED UP

Ploughing, cultivating, scarifying, chaff-cutting harvesting, dam digging, clearing and dozens of other farm tasks are speeded up with tractor work.

Untiring, economical to operate, versatile and powerful, the tractor does the job more and more speedily. To capture those extra acres or to cultivate more intensively the existing ones, more tractors are needed. Two tractors that do all this work faster and cheaper are the Lanz and the K.L. Bulldog Crude Oil tractors. These two tough tractors get the job done in less time with lower maintenance costs and fuel bills.

## Here is what Australian Farmers say

### All it has cost is price of Fan belt

Mr. Alec Ellis, of Violet Town, Victoria, who purchased his Lanz Bulldog secondhand from Mr. Guthrie, of Numurkah, seven years ago, writes to tell us that apart from converting to rubbers, the price of a new fan belt is all that it has cost for repairs and that the tractor is still in first class working order.

### Saved £1,000 on Running Costs

Cut costs like this! Mr. G. Shearwood, of Dooen North, Victoria, writes to tell us that it is just 1½ years since he purchased his Bulldog tractor and in that time it has worked 13,000 hours.

He said: "I consider I have saved £1,000 in running costs and maintenance compared with other makes of tractors since the time I purchased it." Mr. Shearwood goes on to say: "I am quite confident to say that it will work another two years at least before a rebore. The maintenance has been very satisfactory considering the amount of work it has done; a few fan belts, clutch linings, new clutch sleeves, repairs to sliding collar and new set of piston rings. The original big-end bearing is still working in the tractor. Running costs have been very economical, pulling a 19-tyne scarifier and using a 44 gallon drum of fuel to 100 acres. Pulling a 6-furrow plough using 44 gallons per 50 acres. The lubricating system has been fool-proof, it has never been touched and is using no more oil today than when I first got it, averaging ½ gallon daily."

### Not a minute's hold-up in eleven years

"My tractor is 11 years old and has done more work than any other tractor in the district. Honestly speaking, I haven't had a minute's stop with the tractor to date." That's what Mr. R. F. Nuske, of Nhill, Victoria, has to say about his Lanz Bulldog. He said that his farm consists of heavy black soil where he always uses a 20-hoe combine pulling it in top gear for cropping, and a 19-tyne scarifier for fallow work. He mentioned that he has required a few fan belts, a couple of hot bowls and a new set of pins and bushes in the governor, but Mr. Nuske adds: "I count this as nothing considering the work the tractor has done. It has given wonderful service..."

## They're Tough - Mighty Tough

The remarkable capabilities of the Bulldog tractors are being demonstrated everywhere under all sorts of conditions. Reason for high efficiency and extra power of Bulldog is that underneath its dust-proof shell is a sturdy and remarkably tough engine. There are no complicated parts to go wrong. Its design is simple, with fewer moving parts than any other tractor.

## Report from Rochester 36,600 acres since Feb., 1938

Mr. R. W. Haines, of Rochester, Vic., has covered 36,600 acres, plus carrying out numerous other jobs with his Bulldog tractor. In that time he has used 17,000 gallons of fuel at a cost of £760 and 810 gallons of oil costing £725.

Mr. Haines' letter reads: "The acres covered include 5,080 acres fallowing, mostly with a six-furrow m/board plough; 6,800 acres sowing, mostly with 16-row combine; 5,500 acres harvesting, mostly with 10 ft. header. The balance is for cultivating with various implements, including 8 ft. scarifier, 30 ft. driven tyne harrow, etc. Fuel consumption for fallowing was about 1 acre per gallon, and sowing about 2 acres per gallon."

"Our mechanical maintenance over the period (not including tyres or electrical maintenance) amounts to £110 for hot bowls and gaskets, clutch plate, front wheel bearings, fan belts, piston rings. Gears appear unmarked. Pistons have had ½ sets rings since new and the engine looks like years more wear before needing a rebore."

## Vital decision saved Farmers career

In the whole of his 31 years of farming, Mr. Arthur T. Drinkwater, of Annuelo, Vic., considers that his purchase of a Lanz Bulldog was one of the most vital decisions he made.

Mr. Drinkwater writes to us saying: "It was an action I have never regretted, for I must admit my career as a farmer would have failed without Bulldog, my greatest expense has been the reconditioning of the clutch after nine or ten years' service. The original hot bowl lasted eight or nine years. Pressure was put on me to purchase quite a number of tractors, and my decision in favour of Lanz was clinched by the sincerity and good sense of the salesman."

## High Resale Value

Mr. Drinkwater has, during his 31 years' experience on the land, seen many tractors come and go, purchased and resold. On this latter point he has high praise for Bulldog. "I have known of Lanz tractors which originally cost £600 or £700 to sell for £1,000 after eight years' hard work, and these same tractors are still going well. Many who did not purchase Lanz before the war were unfortunate inasmuch as they could not see the difference between the oats and the chaff, and as the years have passed have come to realise what they have missed."

## Does work of 4 men and 12 horses

That the Bulldog is the best tractor on the market is the considered opinion of Mr. E. Mathiske, of Murrayville, Vic. "My Lanz Bulldog is 10½ years old and it works six years on the original set of piston rings. During the whole of that period we followed, cropped and harvested an average of 800 acres a year, making a total of 8,000 acres for ten years."

"On our own property my two sons worked it, and when not working at home were out contracting and kept it busy. We also sank a 30 cubic yard dam with it, using ½-yard automatic scoop, to a depth of 15 feet, a one-man job that outclasses the old methods because four men and two 6-horse teams would not equal it. It pulls a 14-pallet suncider anywhere; 8-furrow heavy shearer fallowing plough; 18-run spring tyne combine."

## Cost £10 per year

"I have checked on my bank book, and I find that over the ten years it has cost £100 for replacements. That includes a major overhaul of the engine at the end of ten years' work, but no rebore, and I may state that when we had it pulled down we replaced everything that showed even the slightest wear. Quite a lot of the parts we replaced would have gone another five years; for instance, the main bearings on crankshaft did not warrant replacing, but having it down we replaced them. The transmission has not been touched yet."

"We pulled 5 acres of fruit trees (old, well rooted trees) with it, and at times I thought it would pull itself in half, but the tree always gave way first. This tractor has always been well serviced but, as regards work, it has had a hiding at times. However, I will conclude by saying that I would not waste time looking for anything better."

# RURAL PRODUCTION

## Outstanding Record from N.S.W.

Here is a record-breaking Bulldog that has worked 40,000 hours, or actually the equivalent of 4½ years in continuous operation every minute of the day. This was disclosed in a letter received from Mr. R. W. Irwin, Tulleigh, via Wagga, N.S.W., who says:

"My 11 years old 'N' model Lanz Tractor has worked 40,000 hours before it was rebored and approximately 10,000 hours since and is still in really good order. The transmission has not been rebored anywhere, nor have the King pin bushes been replaced or front wheel bearings adjusted. Over the 11 years I have paid out £204 in repairs and replacements, including a rebore. Fuel consumption on most work, pulling six-furrow I.H.C. mouldboard plough, 12-disc shearer, 18-run combine and 8 ft. headerground drive, is about 6 gallons per hour and hour day."

"My tractor has been an outstanding tractor for reliability, economy and power."

Imagine for a minute what this can mean on your property—or any property. Tremendous savings within a few short years of operation. More money for the modern appliances and equipment that are fast becoming essentials on well run farms to-day. More money behind you in "lean" years of drought or flood. More money for every purpose for which it is used simply from saving on running costs.

## BULLDOG runs for HALF the COST of a Kero tractor!

Amazing as that may seem, it's absolutely true! Mr. A. Y. Warrick, of Vectis East,

Vic., has proved it on his own farm where he operates both a Lanz Bulldog and a kerosene tractor under the same conditions. The result? Pulling the same load, Bulldog operates at HALF THE COST using from 1½ to 2 gallons per hour of cheap crude oil fuel.

Another challenge to Kero Tractors

## Another challenge to Kero Tractors

Mr. W. Herath, of Merbein, writes saying: "We have a kerosene operated tractor about the same horse-power as our 'J' model Lanz. We have found that we use about 1½ gallons of kerosene per hour as compared with ½ gallon per hour of crude oil with the Lanz. Oil consumption is practically the same. We have spent only £4 on repairs on the Lanz in doing 2,200 hours, and this consists mainly of new fan belts." Mr. Herath adds that he thinks the kerosene job is going to need much more than £4 spent on it during the same number of working hours.

## Plan for the future

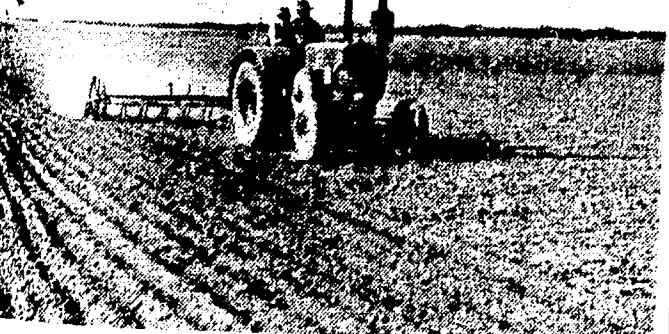
Increased efficiency and productivity with lower operating costs should be the aim of every man on the land to-day. In this, the tractor plays probably the most important role. It has had a revolutionary effect on all branches of agriculture in the past, and the excellent features of the Lanz and K.L. Bulldog Crude Oil Tractors in particular, with their unparalleled low running and maintenance costs, make it possible for the farmer to retain the greatest possible margin between production costs and market returns, regardless of whether prices are high or low. The ability of the Lanz or K.L. Bulldog to keep tractor production costs to the very minimum provides the logical answer to future power requirements in rural spheres.

K.L. Tractor Sales Pty. Ltd. have received hundreds of letters of appreciation in similar terms to those published in this article; this forward to K.L. Tractor Sales Pty. Ltd., 310 Spence Street, Melbourne, if you are interested. Inquiries are welcomed and further information will be gladly furnished.

Diamond Jubilee SHOW REVIEW 1950



Acres yield quickly to ploughs powered by Lanz Bulldog Tractors.



Lanz speeds up cultivation in Mallice.



The K.L. Bulldog Tractors display at The Royal Diamond Jubilee Show.

lished in this article; this forward to K.L. Tractor Sales Pty. Ltd., 310 Spence Street, Melbourne, if you are interested. Inquiries are welcomed and further information will be gladly furnished.



K.L. Bulldog Tractor at work, harvesting time.

## Bag Loading made easy with an A-P Bag Lifter!

Immediate Delivery from Goldsbrough Mort



- For 1 or 2 man operation
- Operated by truck exhaust
- Will handle open bags

An A-P Bag Lifter operates from any truck exhaust while the engine is running at a firm idle. A flexible hose connection enables loading from the side or rear of your truck. The lift is vertical, handling open bags as efficiently as other goods, and when set for 1-man operation, it lifts both man and bag together. The A-P Bag Lifter, which is exclusive to Goldsbrough Mort, is available for immediate delivery.

Last year the A-P Bag Lifter was so successful that supplies were completely sold, so place your order now and be sure one is reserved for you.

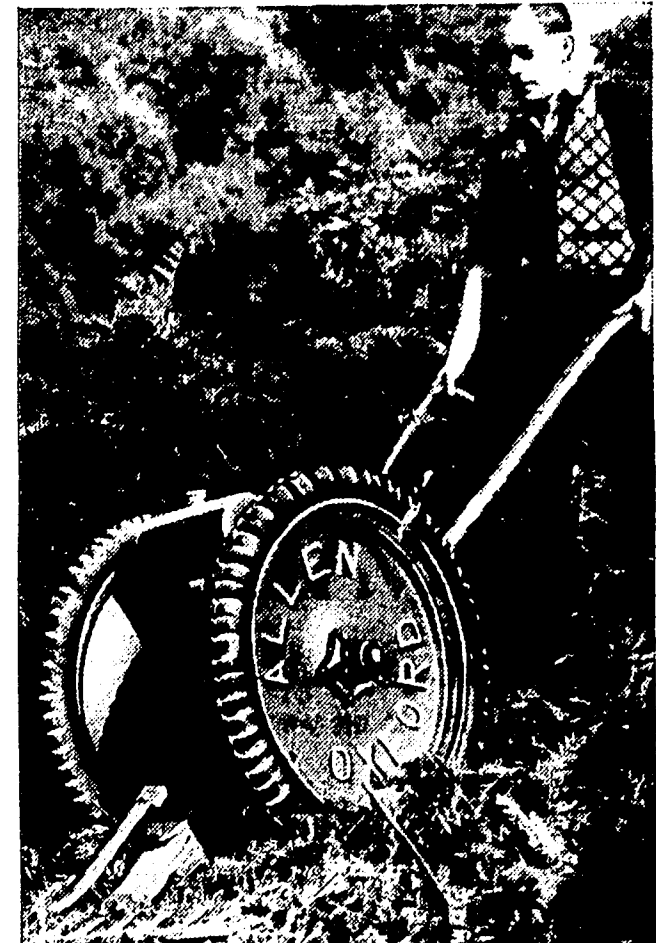
PRICE £28 F.O.R. Melbourne

**Goldsbrough Mort**

AND COMPANY LIMITED (Incl. in Victoria) 1848-1950

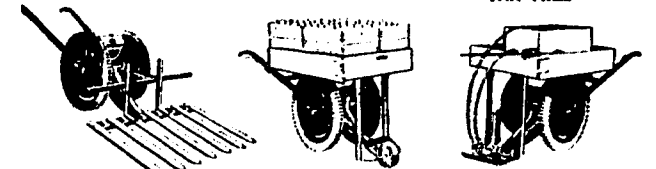
BRANCHES AND AGENCIES THROUGHOUT AUSTRALIA

## Make an END to CLEARING DRUDGERY!



## WITH THE ALLEN MOTOR SCYTHE

The "Allen" saves your back and your bank book as it clears fern, blackberry, rushes and grass with speed and ease. No skill is needed to operate this all-British, extra-powered scythe which works equally well on the flat or on hillsides. Saves endless labour and big wage bills. Mows an acre in two hours on one-third gallon of petrol! Attachments available—Hay Sweep, Carrier, Spray Pump, Light Hoe.



SCOTT BONNAR (VIC) PTY. LTD., 200 QUEEN ST. MELBOURNE, MU 2424. Please send Illustrated Literature about the "Allen" Motor Scythe and Attachments. NAME ADDRESS S.R. FREE ILLUSTRATED BOOKLET

189: Mrv. Aug. Oct. 19 Mar. Jun. Sep. Nov. Tot. 19 ary. May. Aug. Oct. Dec. 19 284 286 207





SPRING-TIME BARGAINS from BRIDGES HARDWARE

BRIDGES HARDWARE PHONE 50

BRONCHIAL BALSAM FOR COUGHS & COLDS

Special Bronchitis Mixture GRAHAM'S PHARMACY

REFRIGERATORS Kerosene Operated CHARLES HOPE COLD FLAME

PEARCE'S MODEL GROCERY SPECIALS

HARRIS' POWDERS HEADACHES - RHEUMATISM - SCIATICA

DEATH. RAMSAY - On Nov. 8, result of accident, Robert, 8, husband of Beila, and father of Albert, Fred, and Fred (Mrs. Cowden), Alisa, Nona and Robert; loved Pa. of Philip, Tony, Robert, Peter, Geoffrey, and Rodney.

IN MEMORIAM. COWELL - In loving memory of our dear Dad and Granddad who passed away, Nov. 16th, 1949.

Riponshire Advocate. ESTABLISHED 1874. Published every Saturday Morning.

SATURDAY, NOV. 18, 1950.

Local News and Notes. CONTRIBUTION. - Beaufort R.V.L.B. Auxiliary sent £110 to the Red Cross as the annual contribution.

REMEMBRANCE. - A simple ceremony took place at the Beaufort R.V.L.B. Club held a service on Thursday night.

EUCHE and BOWLS. - The Beaufort F.B. Ladies Club held a eucche and bowls social at the Fire Station on Saturday night.

ANNIVERSARY. - Special services were held at St. Andrew's Presbyterian Church, Beaufort, on Sunday, to celebrate the Sunday School anniversary.

COMING SALES. Elder, Smith & Co. will offer off-shears sale on Wednesday, 23rd Nov., at 2 p.m., 4000 sheep on account of district graziers.

IT'S SMART TO BE CLEANED BY EUREKA DRYCLEANERS. 7 VICTORIA ST., BALLARAT.

Wm. JACKSON, CHEMIST. BEAUFORT. HEADACHES - RHEUMATISM - SCIATICA - LUMBAGO - TOOTHACHE - EARACHE.

F.B. LADIES' CLUB. Beaufort F.B. Ladies Social Club held their monthly meeting on Monday afternoon.

DISTRICT HOSPITAL. There was a good attendance of members at the monthly meeting on Monday night.

BEAUFORT HOUSING ESTATE. The matter of housing came before the Riponshire Council on Monday night.

BEAUFORT HOUSING ESTATE. The matter of housing came before the Riponshire Council on Monday night.

BEAUFORT HOUSING ESTATE. The matter of housing came before the Riponshire Council on Monday night.

BEAUFORT HOUSING ESTATE. The matter of housing came before the Riponshire Council on Monday night.

BEAUFORT HOUSING ESTATE. The matter of housing came before the Riponshire Council on Monday night.

BEAUFORT HOUSING ESTATE. The matter of housing came before the Riponshire Council on Monday night.

BEAUFORT HOUSING ESTATE. The matter of housing came before the Riponshire Council on Monday night.

BEAUFORT HOUSING ESTATE. The matter of housing came before the Riponshire Council on Monday night.

BEAUFORT HOUSING ESTATE. The matter of housing came before the Riponshire Council on Monday night.

BEAUFORT HOUSING ESTATE. The matter of housing came before the Riponshire Council on Monday night.

BUANGOR NOTES. F.B. COMPETITION - Middle Creek, Buangor and a junior team are now in competition for the teams competition.

HOUSE CRICKET. A two-day house cricket match took place on Monday afternoon.

PARLIAMENTARY NOTES. Several important Bills are still under discussion; the most important being the Mental Hygiene Authority Bill.

SKIPTON JOTTINGS. The death of Mr. William Thomas Costello occurred on Monday, 27th October, at Ballarat.

PERSONAL. Miss Lorna Wise is at present holidaying in Melbourne, and her position at the post office is being occupied by Mr. J. Hanfall.

BEAUFORT RAINFALL. 1945-January, 93; Feb. 22; March, 10; April, 6; May, 18; June, 20; July, 16; August, 30; September, 15; October, 22; November, 28; December, 64; total for year, 2054.

BEAUFORT RAINFALL. 1946 - January, 414; February, 477; March, 650; April, 221; May, 128; June, 214; July, 411; August, 301; September, 24; October, 421; November, 28; December, 359; total for year, 3720.

BEAUFORT RAINFALL. 1947 - January, 25; February, 184; March, 402; April, 18; May, 60; June, 335; July, 407; August, 207; September, 201; October, 421; November, 28; December, 359; total for year, 3720.

BEAUFORT RAINFALL. 1948 - January, 51; February, 187; March, 37; April, 371; May, 291; June, 208; July, 199; August, 314; September, 314; October, 46; November, 172; December, 22; total for year, 2564.

BEAUFORT RAINFALL. 1949 - January, 74; February, 334; March, 183; April, 67; May, 156; June, 168; July, 15; August, 407; September, 28; October, 210; November, 28; December, 98; total, 24,39 inches.

BEAUFORT RAINFALL. 1950, January, 73; February, 284; March, 225; April, 122; May, 286; June, 148; July, 262; August, 207; September, 357; October, 288.

R.S.L. BOWLING CLUB. The Ripon R.S.L. Bowling Club opened the season on Saturday, and there was a good attendance of members and visitors.

BUANGOR NOTES. F.B. COMPETITION - Middle Creek, Buangor and a junior team are now in competition for the teams competition.

HOUSE CRICKET. A two-day house cricket match took place on Monday afternoon.

PARLIAMENTARY NOTES. Several important Bills are still under discussion; the most important being the Mental Hygiene Authority Bill.

SKIPTON JOTTINGS. The death of Mr. William Thomas Costello occurred on Monday, 27th October, at Ballarat.

PERSONAL. Miss Lorna Wise is at present holidaying in Melbourne, and her position at the post office is being occupied by Mr. J. Hanfall.

BEAUFORT RAINFALL. 1945-January, 93; Feb. 22; March, 10; April, 6; May, 18; June, 20; July, 16; August, 30; September, 15; October, 22; November, 28; December, 64; total for year, 2054.

BEAUFORT RAINFALL. 1946 - January, 414; February, 477; March, 650; April, 221; May, 128; June, 214; July, 411; August, 301; September, 24; October, 421; November, 28; December, 359; total for year, 3720.

BEAUFORT RAINFALL. 1947 - January, 25; February, 184; March, 402; April, 18; May, 60; June, 335; July, 407; August, 207; September, 201; October, 421; November, 28; December, 359; total for year, 3720.

BEAUFORT RAINFALL. 1948 - January, 51; February, 187; March, 37; April, 371; May, 291; June, 208; July, 199; August, 314; September, 314; October, 46; November, 172; December, 22; total for year, 2564.

BEAUFORT RAINFALL. 1949 - January, 74; February, 334; March, 183; April, 67; May, 156; June, 168; July, 15; August, 407; September, 28; October, 210; November, 28; December, 98; total, 24,39 inches.

BEAUFORT RAINFALL. 1950, January, 73; February, 284; March, 225; April, 122; May, 286; June, 148; July, 262; August, 207; September, 357; October, 288.

RIPON SHIRE COUNCIL. (Continued from page 1.) From A. and W. Norman, Skipton, with reference to the ripon shire council meeting on Monday.

RIPON SHIRE COUNCIL. (Continued from page 1.) From A. and W. Norman, Skipton, with reference to the ripon shire council meeting on Monday.

RIPON SHIRE COUNCIL. (Continued from page 1.) From A. and W. Norman, Skipton, with reference to the ripon shire council meeting on Monday.

RIPON SHIRE COUNCIL. (Continued from page 1.) From A. and W. Norman, Skipton, with reference to the ripon shire council meeting on Monday.

RIPON SHIRE COUNCIL. (Continued from page 1.) From A. and W. Norman, Skipton, with reference to the ripon shire council meeting on Monday.

RIPON SHIRE COUNCIL. (Continued from page 1.) From A. and W. Norman, Skipton, with reference to the ripon shire council meeting on Monday.

RIPON SHIRE COUNCIL. (Continued from page 1.) From A. and W. Norman, Skipton, with reference to the ripon shire council meeting on Monday.

RIPON SHIRE COUNCIL. (Continued from page 1.) From A. and W. Norman, Skipton, with reference to the ripon shire council meeting on Monday.

RIPON SHIRE COUNCIL. (Continued from page 1.) From A. and W. Norman, Skipton, with reference to the ripon shire council meeting on Monday.

RIPON SHIRE COUNCIL. (Continued from page 1.) From A. and W. Norman, Skipton, with reference to the ripon shire council meeting on Monday.

RIPON SHIRE COUNCIL. (Continued from page 1.) From A. and W. Norman, Skipton, with reference to the ripon shire council meeting on Monday.

RIPON SHIRE COUNCIL. (Continued from page 1.) From A. and W. Norman, Skipton, with reference to the ripon shire council meeting on Monday.

NEW VALUATION. A new valuation was decided on Monday, and the Ripon Shire Council meeting on Monday.

NEW VALUATION. A new valuation was decided on Monday, and the Ripon Shire Council meeting on Monday.

NEW VALUATION. A new valuation was decided on Monday, and the Ripon Shire Council meeting on Monday.

NEW VALUATION. A new valuation was decided on Monday, and the Ripon Shire Council meeting on Monday.

NEW VALUATION. A new valuation was decided on Monday, and the Ripon Shire Council meeting on Monday.

NEW VALUATION. A new valuation was decided on Monday, and the Ripon Shire Council meeting on Monday.

NEW VALUATION. A new valuation was decided on Monday, and the Ripon Shire Council meeting on Monday.

NEW VALUATION. A new valuation was decided on Monday, and the Ripon Shire Council meeting on Monday.

NEW VALUATION. A new valuation was decided on Monday, and the Ripon Shire Council meeting on Monday.

NEW VALUATION. A new valuation was decided on Monday, and the Ripon Shire Council meeting on Monday.

NEW VALUATION. A new valuation was decided on Monday, and the Ripon Shire Council meeting on Monday.

NEW VALUATION. A new valuation was decided on Monday, and the Ripon Shire Council meeting on Monday.

OBITUARY. MRS. IVY M. WYATT. As the result of an accident, Mrs. Ivy M. Wyatt, wife of Mr. Stanley Wyatt, of Footscray (formerly of Beaufort), Mrs. Wyatt was 44 years of age.

OBITUARY. MRS. IVY M. WYATT. As the result of an accident, Mrs. Ivy M. Wyatt, wife of Mr. Stanley Wyatt, of Footscray (formerly of Beaufort), Mrs. Wyatt was 44 years of age.

OBITUARY. MRS. IVY M. WYATT. As the result of an accident, Mrs. Ivy M. Wyatt, wife of Mr. Stanley Wyatt, of Footscray (formerly of Beaufort), Mrs. Wyatt was 44 years of age.

OBITUARY. MRS. IVY M. WYATT. As the result of an accident, Mrs. Ivy M. Wyatt, wife of Mr. Stanley Wyatt, of Footscray (formerly of Beaufort), Mrs. Wyatt was 44 years of age.

OBITUARY. MRS. IVY M. WYATT. As the result of an accident, Mrs. Ivy M. Wyatt, wife of Mr. Stanley Wyatt, of Footscray (formerly of Beaufort), Mrs. Wyatt was 44 years of age.

OBITUARY. MRS. IVY M. WYATT. As the result of an accident, Mrs. Ivy M. Wyatt, wife of Mr. Stanley Wyatt, of Footscray (formerly of Beaufort), Mrs. Wyatt was 44 years of age.

OBITUARY. MRS. IVY M. WYATT. As the result of an accident, Mrs. Ivy M. Wyatt, wife of Mr. Stanley Wyatt, of Footscray (formerly of Beaufort), Mrs. Wyatt was 44 years of age.

OBITUARY. MRS. IVY M. WYATT. As the result of an accident, Mrs. Ivy M. Wyatt, wife of Mr. Stanley Wyatt, of Footscray (formerly of Beaufort), Mrs. Wyatt was 44 years of age.

OBITUARY. MRS. IVY M. WYATT. As the result of an accident, Mrs. Ivy M. Wyatt, wife of Mr. Stanley Wyatt, of Footscray (formerly of Beaufort), Mrs. Wyatt was 44 years of age.

OBITUARY. MRS. IVY M. WYATT. As the result of an accident, Mrs. Ivy M. Wyatt, wife of Mr. Stanley Wyatt, of Footscray (formerly of Beaufort), Mrs. Wyatt was 44 years of age.

OBITUARY. MRS. IVY M. WYATT. As the result of an accident, Mrs. Ivy M. Wyatt, wife of Mr. Stanley Wyatt, of Footscray (formerly of Beaufort), Mrs. Wyatt was 44 years of age.

OBITUARY. MRS. IVY M. WYATT. As the result of an accident, Mrs. Ivy M. Wyatt, wife of Mr. Stanley Wyatt, of Footscray (formerly of Beaufort), Mrs. Wyatt was 44 years of age.

NEPTUNE OIL CO. PTY. LTD. has pleasure in announcing the appointment of Mr. F. W. CROCKER as agents for Neptune Quality Products

now is the time to come to the aid of the Country. THE time has come when Australians could do much to help the Government in its fight against the Japanese.

Important to Holders of COMMONWEALTH SECURITIES. On 2nd January, 1951, all the 4% Commonwealth Bonds and Inherited Stock issued in August, 1931, now outstanding, will be due for redemption.

The ELEVENTH SECURITY LOAN OPENS November 23rd. As well as those with maturing securities to convert, everyone may buy Eleventh Security Loan Bonds.

220 APPRENTICES WANTED BY VICTORIAN RAILWAYS

Minimum Wage, £4/6/ per week and Special Travel Concessions to Country lads living away from home.

AGES: 15 to 17 - Eighth Grade Standard, 18 and under 19 - Intermediate or higher certificate.

PRELIMINARY NOTICE.

IMPORTANT CLEARING SALE

"RUMERALLA" MOYSTON, TUESDAY, 12th DECEMBER, 1950.

VICTORIAN PRODUCERS' CO-OPERATIVE COY. LTD. and AUSTRALIAN ESTATES LTD. under instructions from Mr. ALLAN VANSTAN, will sell on the above date the whole of his Stock, Plant and Furniture.

BEAUFORT OFF SHEARS SALE

NOVEMBER, 1950 THURSDAY, 23rd AT 2 P.M. SHARP.

2500 MERINO, COMEBACK AND X-BRED DISTRICT SHEEP.

DALGETY AND COMPANY LIMITED, Ballarat, and THEO. W. SCHLICHT & SON, Beaufort Auctioneers in conjunction, will yard and offer for sale the following sheep: 150 Merino Wethers, 2 and 4 2000 Merino Ewes, 5 years, Station Bred.

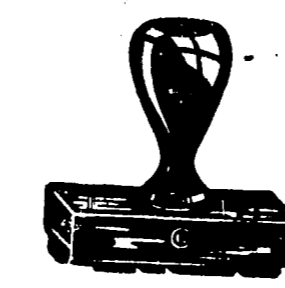
ELDER, SMITH & CO. LIMITED BEAUFORT OFF SHEARS SALE

4000 - SHEEP - 4000

Wednesday, 29th November, 1950 AT 2 P.M.

ELDER, SMITH & CO. LIMITED will hold their first Off Shears Sale as above, when they will offer on account of District graziers: A/c. Miss L. M. ODDIE, "Challinck Park," Beaufort. 400 Merino Wethers, 4 years, October shorn.

This will be a particularly good yarding of locally bred Sheep, sound in every way, and can be thoroughly recommended to buyers in search of good, sound, fine-woolled sheep.



ORDERS TAKEN AT THIS OFFICE

RUBBER STAMPS OF ALL KINDS AND ACCESSORIES

OWEN'S - OWEN'S ARE

BALLARAT DISTRICT SALES AND SERVICE AGENTS

FRIGIDAIRE

ELECTRIC REFRIGERATORS

(A General Motors Product)

BENDIX

AUTOMATIC HOME LAUNDRY

(For Workless Washdays)

FOR PROMPT SERVICE

OWEN'S

9 ARMSTRONG ST. NTH. BALLARAT. Phone 600

Entrancing

Gemey - luxury beauty aids for those who appreciate the finest.

We are pleased to be able to offer you a full range of fragrant Gemey Beauty Aids - those gay guardians of your loveliness.

Gemey

superior cosmetics of rare fragrance

NOW IN FULL SUPPLY

CREATIONS OF RICHARD HUDNUT OBTAINABLE AT

JACKSON'S PHARMACY BEAUFORT.

HOW YOU WILL BENEFIT by reading the world's daily newspaper

THE CHRISTIAN SCIENCE MONITOR

MELBOURNE CITY READING ROOM NEWSPAPER HOUSE, 27 COLLINS STREET

ARTHUR M. PARKER, PRINTER AND PUBLISHER "RIPONSHIRE ADVOCATE" OFFICE, LAWRENCE ST., BEAUFORT

ELMHURST OFF SHEARS SALE Thursday, 30th November, 1950, at 2 p.m.

3500 SHEEP 40 CATTLE 40

CRAWFORD DOWLING PTY. LTD. will hold their Off Shears Sale in their Elmhurst Yards when they will have for sale the following, direct from local breeders and graziers: A/c. DON KEITH, Esq., Mt. Lonarch - 246 Merino Wethers, 4 years.

The Elmhurst sheep are noted doers and buyers are strongly recommended to attend. Being surplus sheep they are all for genuine sale.

ADVERTISERS and Printing Customers please note that the "Riponshire Advocate" office will be closed for a fortnight during the Christmas Holidays. There will be no issue of the paper on Saturday, 30th Dec. and Saturday, 6th Jan.

BEAUFORT A.L.P. DANCE, C.W.A. Hall, FRIDAY, 24th NOVEMBER.

FOR SALE, U MODEL TWIN CITY, in good order, well shed, 1350 x 52 Good Year sure grip, P.T.O. attachment, with coupling to suit McKay Header; also set steel wheels, fitted with under grips to suit above Tractor.

STRAYED into 'my paddock at Eurambeen, one black poll Heifer, no visible brand or ear mark, but small patch of green paint on rear rump; owner can have same by paying expenses.

BEAUFORT A.N.A. FORTNIGHTLY MEETING OF BEAUFORT BRANCH, A.N.A. TUESDAY NIGHT, Mechanics Institute.

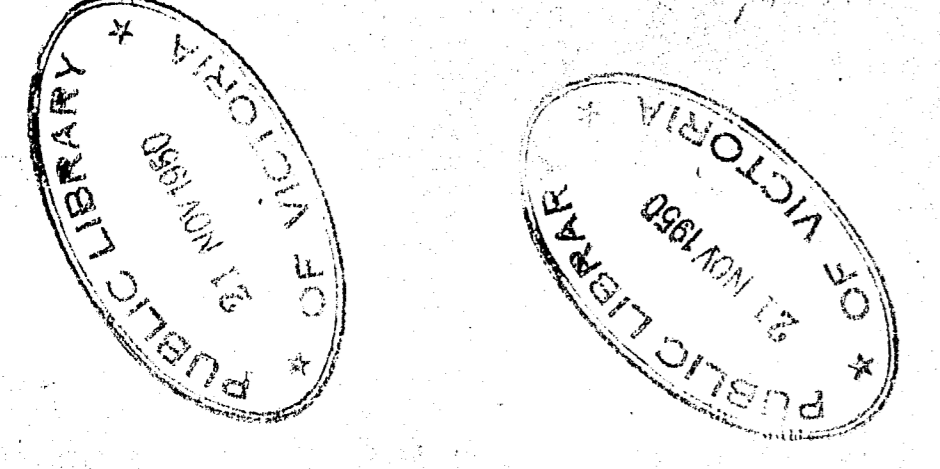
LEGION Monthly Meeting at Sire Hall, TUESDAY, Nov. 21, at 8 p.m.

MOTHERS' CLUB BIRTHDAY PARTY.

Guest Speaker: Mrs. HOWELLS, State President, V.M.F.C. MUSICAL EVENING. Members Bring a Plate.

CHURCH SERVICES SUNDAY, NOV. 19. Church of England. - Middle Creek, 9.45; Beaufort, 11 and 7; Lamnath, 2; Trawalla, 3.30.

IRON FOUNDRY An Overseas Company desires to purchase an Iron-Foundry and take over managerial and technical staff and other employees on favourable terms and arrangements.



Suitable Xmas Gifts Are Here in Profusion



J. R. WOTHERSPOON & CO "FOR XMAS SHOPPING." PHONES, BEAUFORT 1 and 176.



A Fine Car Made Finer Still See this amazing new 1950 Vanguard and you'll realize it's the ideal car for you... ideal in size, ideal in economy, ideal in comfort, ideal in finish.

KNIGHT'S TAXI SERVICE PROMPT AND EFFICIENT TAXI SERVICE AVAILABLE AT ALL HOURS TO ANY PART OF THE DISTRICT.

LOUNGE SUITE AND CHAIRS RECOVERED IN YOUR OWN HOME AT LESS THAN CITY PRICES. J. H. SPENCER, UPHOLSTERER

RIPON SHIRE COUNCIL

MONDAY, NOV. 13.

The monthly meeting of the Ripon Shire Council was held at the Shire Hall on Monday, Nov. 13, 1950.

Present—Crs. A. J. Hinton (president), J. Kirkpatrick, D. S. Mackinnon, R. G. Guthrie, P. Russell, H. J. Buchanan, and M. Watkin.

Mr. Kirkpatrick apologized for the absence of Cr. Schlicht, Cr. Russell apologising for the absence of Cr. Roddis.

CONSENTS. From C.R.B., concerning bridge, Carngham-Travalla Rd. It was also stated that the main roads maintenance schedule for 1951 had been approved.

From C.R.B., in regard to allowance of £1025/2/6 under Hyland Plan, 1950-51.

From Lands Department, with reference to site for Comfort Station at Mechanics Institute, Beaufort.

From Municipal Association, in reference to increase in wages. Referred to officers.

From Elder, Smith & Co. concerning sale yards at Beaufort.

Cr. Buchanan moved that permission be granted subject to approval of health inspector. Seconded by Cr. Kirkpatrick, and carried.

From E. Morton, M.L.A., in regard to Municipalities Finance Bill. Received.

From Lands Officer, Beaufort, concerning Yau Holes gravel reserve. It was stated that the reserve was still under the control of the Council.

Mr. Lincoln said locked gates and no drainage at edge of this reserve. Contractors had been notified they could not take it. The money paid to the Lands Department was being refunded to the Council.

From secretary Presbyterian Church, Skipton, asking for street light and white posts. The secretary—He advised that he had written to committee with the C.R.B. about the white posts.

From Progress Association, Skipton, asking for street light and drainage near Tait's and Powell's Cr. Guthrie—It was a reasonable request. He moved that the request for a street light be accepted. Seconded by Cr. Buchanan and carried. Engineer to inspect and report on drainage, on motion of Crs. Russell and Guthrie.

From Tennis Club Carngham, asking for gates at old courts for removal to new courts. Request to be granted, on motion of Crs. Russell and Guthrie.

From Beaufort Legion of Ex-Servicemen, asking permission to include a trotting event in sports carnival, Football Day, 1951. The secretary said he had informed them that they could run it on the edge of the reserve. He understood the police had taken the matter up, as they considered it a very small matter. The club said they could not keep off the cycle track.—Deferred till next meeting till report received from police.

From John Darling & Sons, asking that weightbridges be tested. Request to be complied with, on motion of Crs. Kirkpatrick and Buchanan.

From R. J. Hyatt, asking for return supply for three houses at his farm. Referred to Water Commission.

From W. Beasley, in regard to drainage at edge of this reserve. Referred to engineer, with power to act, on motion of Crs. Buchanan and Guthrie.

An earth drain would help a lot. (Continued on inside page.)

of larger lamps, public lighting.—Received. From Country Fire Authority, in reference to power pump asked for for East Riding. It was stated that a power pump had been allotted to Snake Valley Brigade in March, 1949.—Cr. Russell—They had one at Snake Valley and would like another for Morthcup or Chestow. Cr. Buchanan said although Beaufort had almost a complete unit, they could not get an auxiliary unit. Letter received. From Shire of Hampden, in regard to sanitary service at Skipton. It was proposed to make a levy of 5s per pan per annum. The secretary—Ripon had increased theirs also. Letter received. From Shire of Hampden, in reference to repairs to Banongill Bridge. The secretary—The Council was billed for £174.—Account to be paid. From Municipal Association, in reference to increase in wages. Referred to officers. From Elder, Smith & Co. concerning sale yards at Beaufort. Cr. Buchanan moved that permission be granted subject to approval of health inspector. Seconded by Cr. Kirkpatrick, and carried. From E. Morton, M.L.A., in regard to Municipalities Finance Bill. Received. From Lands Officer, Beaufort, concerning Yau Holes gravel reserve. It was stated that the reserve was still under the control of the Council.—Mr. Lincoln said locked gates and no drainage at edge of this reserve. Contractors had been notified they could not take it. The money paid to the Lands Department was being refunded to the Council. From secretary Presbyterian Church, Skipton, asking for street light and white posts. The secretary—He advised that he had written to committee with the C.R.B. about the white posts. From Progress Association, Skipton, asking for street light and drainage near Tait's and Powell's Cr. Guthrie—It was a reasonable request. He moved that the request for a street light be accepted. Seconded by Cr. Buchanan and carried. Engineer to inspect and report on drainage, on motion of Crs. Russell and Guthrie. From Tennis Club Carngham, asking for gates at old courts for removal to new courts. Request to be granted, on motion of Crs. Russell and Guthrie. From Beaufort Legion of Ex-Servicemen, asking permission to include a trotting event in sports carnival, Football Day, 1951. The secretary said he had informed them that they could run it on the edge of the reserve. He understood the police had taken the matter up, as they considered it a very small matter. The club said they could not keep off the cycle track.—Deferred till next meeting till report received from police. From John Darling & Sons, asking that weightbridges be tested. Request to be complied with, on motion of Crs. Kirkpatrick and Buchanan. From R. J. Hyatt, asking for return supply for three houses at his farm. Referred to Water Commission. From W. Beasley, in regard to drainage at edge of this reserve. Referred to engineer, with power to act, on motion of Crs. Buchanan and Guthrie. An earth drain would help a lot. (Continued on inside page.)

SPECIALS TARAX DRINKS (ANY QUANTITY), SWALLOW'S ICE CREAM (CHOCOLATE COATED), CHOICEST FRUIT AND VEGETABLES (Orders Delivered), COOKED MEATS (KEPT IN REFRIGERATOR). AGENTS FOR MCNUALLY'S DRY CLEANING SERVICE AND WEST END LAUNDRY (Sheets—Blankets—Shirts). CALL AND SEE KEN. WHITTAKER, HAVELOCK STREET—PHONE 131.

CLARK & CROUCH WILLOUGHBY STREET BEAUFORT Phone 114 (M. J. CLARK, PROPRIETOR). FURNITURE MANUFACTURERS ALL CLASSES OF FURNITURE BUILT IN KITCHEN FITTINGS, LINEN PRESSES, ETC. PLEASE NOTE STRICTLY CASH.

J. de CONEY LADIES' HAIRDRESSING SALON For All Your Beauty Treatments

GEO. FERRIES MONUMENTAL and BUILDING MASONS CASTLEMAINE—PHONE 139

Wastell & Cutler OPTOMETRISTS & OPTICIANS 48 STURT ST. BALLARAT

Wool and Produce Brokers—Stud, Store and Fat Stock Salesmen—Real Estate Agents and Agricultural Merchandise—Insurance.

ELDER'S SMITH OPTICIANS. BEAUFORT, MONDAY, DECEMBER 4th From 11 a.m. to 4 p.m. Consult "C. & G." Qualified Opticians at the Mechanics' Institute. Appointments with Mr. A. S. Graham, Chemist.

HARRIS' FAMOUS POWDERS FOR HEADACHES, POST PRILE WM. JACKSON, Chemist, BEAUFORT.

BEAUFORT DISTRICT HOSPITAL PHONE BEAUFORT 53

THIS SPACE RESERVED FOR A PHOTO OF THE NEW HOSPITAL HAVE YOU SENT YOUR CONTRIBUTION ALONG?

MEMBERSHIP FEES PER ANNUM Married Members, 21/6; Ex-Servicemen, Married Single Men, £1. HOSPITAL FEES PER WEEK General Cases, 12/18/6 week. Non-Members, Children: Members, 2/12; Non-Members, 1/18/6 week.

MATERNITY CASES UP TO 14 DAYS Maternity Cases: Members, 21/18/6 fortnight. Non-Members, 21/18/6 fortnight. Maternity cases must arrange with Sister-in-charge two months prior to entering Hospital.

HOSPITAL BENEFITS ACT All Fees are subject to a reduction of 8/ per day under the above Act.

Wool and Produce Brokers—Stud, Store and Fat Stock Salesmen—Real Estate Agents and Agricultural Merchandise—Insurance.

Wool and Produce Brokers—Stud, Store and Fat Stock Salesmen—Real Estate Agents and Agricultural Merchandise—Insurance.

SOLE AGENTS IN VICTORIA FOR—Youngs Sheep Dips (KILLS TICKS, LICE AND THEIR EGGS) ARARAT Agents: Best and SPALDING. BEAUFORT Agents: J. R. WOTHERSPOON & CO.

STUD STOCK OF DISTINCTION CHALLICUM BUANGOR VIC. CHALLICUM MERINO STUD of Fine and Superfine Wool. Large framed, weighty cutters of dense, soft-handling wool, renowned for their character, quality and length.

The Riponshire Advocate BEAUFORT Registered at General Post Office, Melbourne, for transmission by post as a newspaper.

SOIL CONSERVATION The first meeting of the Ripon Shire Soil Conservation District Advisory Committee was held at Ararat on Wednesday 9th November.

WEDDING BELLS Mortlake Bowlers Farewell Secretary A large gathering of members of the Mortlake Bowling Club was held at the club on Saturday afternoon, Nov. 11.

MEMBERSHIP FEES PER ANNUM Married Members, 21/6; Ex-Servicemen, Married Single Men, £1. HOSPITAL FEES PER WEEK General Cases, 12/18/6 week. Non-Members, Children: Members, 2/12; Non-Members, 1/18/6 week.

During the afternoon tea interval, the opportunity was taken to read the minutes of the meeting of the committee of the club, which were read by Mr. Greenrod.

GRAVEYARDS The first meeting of the Ripon Shire Soil Conservation District Advisory Committee was held at Ararat on Wednesday 9th November.

GRAVEYARDS The first meeting of the Ripon Shire Soil Conservation District Advisory Committee was held at Ararat on Wednesday 9th November.

GRAVEYARDS The first meeting of the Ripon Shire Soil Conservation District Advisory Committee was held at Ararat on Wednesday 9th November.

GRAVEYARDS The first meeting of the Ripon Shire Soil Conservation District Advisory Committee was held at Ararat on Wednesday 9th November.

GRAVEYARDS The first meeting of the Ripon Shire Soil Conservation District Advisory Committee was held at Ararat on Wednesday 9th November.

GRAVEYARDS The first meeting of the Ripon Shire Soil Conservation District Advisory Committee was held at Ararat on Wednesday 9th November.

GRAVEYARDS The first meeting of the Ripon Shire Soil Conservation District Advisory Committee was held at Ararat on Wednesday 9th November.

GRAVEYARDS The first meeting of the Ripon Shire Soil Conservation District Advisory Committee was held at Ararat on Wednesday 9th November.

COUGLE'S DRAPERY EMPORIUM AXMINSTER RUGS (all Sizes) ACTIL SHEETS, QUALETA SHEETS, QUALETA PILLOW CASES, DICKIE'S TOWELS, KAYSER HOSIERY and LINGERIE, NEWEST DRESS MATERIALS, KNITTING WOOLS IN GREAT VARIETY

COUGLE'S THE BIG VALUE DRAPERS

AUSTIN CARS—TRUCKS—UTILITIES

Dennys, Lascelles Ltd., WOOL BROKERS, STOCK AND STATION, GRAIN AND SHEEPING AGENTS.

Most Versatile Tractor Ever Built FERGUSON "ALL-THE-YEAR-ROUND" usefulness on any farm. See Us Now For Details CRAIG BROS., 36 ARMSTRONG ST., BALLARAT, Phone 1029.

E. J. STRICKLAND & SONS BALLARAT WOOL BROKERS AUCTION SALES OF WOOL CONDUCTED AT REGULAR INTERVALS THROUGHOUT THE SEASON.

WESTERN GARAGE, BEAUFORT, AT YOUR SERVICE. JOHN DUNN Funeral Director, 246 BARKLY STREET, ARARAT.

WARDROP "MY TAILOR" (2 Doors below City Hall) 215 Sturt Street, BALLARAT

Geelong - Skipton Bus TOURIST BUREAU, GEELONG (Little Malop St.)

WARDROP "MY TAILOR" (2 Doors below City Hall) 215 Sturt Street, BALLARAT

A GOOD SIGN for motorists everywhere. Everywhere throughout Australia people interested in cars, vans, trucks, 'buses or tractors look for the Nuffield Dealer Sign. They know that the motor trader who displays it specialises in the sale and service of Australia's widest and most popular range of motor vehicles.

Wool and Produce Brokers—Stud, Store and Fat Stock Salesmen—Real Estate Agents and Agricultural Merchandise—Insurance.

Wool and Produce Brokers—Stud, Store and Fat Stock Salesmen—Real Estate Agents and Agricultural Merchandise—Insurance.

Wool and Produce Brokers—Stud, Store and Fat Stock Salesmen—Real Estate Agents and Agricultural Merchandise—Insurance.

SUGGESTIONS FOR XMAS GIFTS from BRIDGES HARDWARE PHONE 50

FOWLER'S FRUIT BOTTLING OUTFITS. With Extra Jars if Required. TENNIS RACQUETS From 37/6. Extra Value. CANTEENS, CUTLERY, from 15/19/6.

WRINGERS: Acme Wringmaster, Etc. ELECTRIC CAKE MIXERS, 240 and 32 v. VACUUM CLEANERS, 32 and 240 volt. NUMEROUS GIFTS FOR ALL AT Competitive Prices.

BRONCHIAL BALSAM FOR COUGHS & COLDS IN CHILDREN AND ADULTS. Special Bronchitis Mixture. GRAHAM'S PHARMACY NEILL ST. BEAUFORT. PHONE 29

FOR YOUR ENJOYMENT INVEST NOW IN A HEALING RADIO HEAR THE TESTS IN COMFORT ELECTRIC VIBRATOR DRY BATTERY MODELS Golden Voice Radios TO SUIT ALL. WE CAN STILL SUPPLY FROM STOCK CHARLES HOPE COLDFLAME REFRIGERATOR GUARANTEED 5 YEARS PRICED AT 297/10 MELB. COMPARISON AND PERFORMANCE WITH ANY OTHER MAKE WILL CONVINC.

PEARCE'S MODEL GROCERY SPECIALS ROSELLA TOMATO SOUP, 1/4 per 16 oz. Tin. MACARONI, Rinaldi Brand, 8d Packet. For Quick Service Ring 38

WHY SUFFER? HARRIS' POWDERS RELIEVE HEADACHES - RHEUMATISM - SCIATICA LUMBAGO - TOOTHACHE - EARACHE. 5/6 PER BOX POST FREE. Wm. JACKSON, CHEMIST BEAUFORT.

GIILINGHAM. - Mrs. Ella Gillingham, beloved wife of Frank Albert, an loving mother of Kevin, beloved daughter of Mr and Mrs H. Finch, beloved sister of Ralph, Wilfred, Herbert, Mrs B. Tiley, Mrs G. Russell, and Irene. Aged 36 years. IN MEMORIAM.

SUMMERS. - In loving memory of our dear brother James, who passed away at the Beaufort Base Hospital on Nov. 25, 1949. With a farewell unspoken. You gently passed away. But in our hearts there's a memory.

TOPP. - In loving memory of dear Morrie, passed away 26th Nov., 1949. Gone, but not forgotten. Muriel McCallum.

TOPP. - In memory of my dear mother, passed away Nov. 26th, 1949. Not just to-day, but every day in silence we remember.

THE Riponshire Advocate. ESTABLISHED 1874. Published every Saturday Morning. Printed by Arthur Morris Parker, at "The Riponshire Advocate" Office, at the corner of Pratt and Lawrence Streets, Beaufort, Victoria.

LOCAL TROTTER. - Mr Gil S. Loffs' trotter, Gallant Ranj finished second in the Open Stakes at the Horsham Trotting meeting on Saturday. F.B. LADIES. - Beaufort F.B. Ladies celebrated the birthday of the club by a bus trip to Geelong on Wednesday, 15th Nov. Tea was served at a cafe.

TOPPED MARKET. - At the Ballarat Market on Tuesday, 12th Nov., the market for the Estate late H. P. Mackenzie, Traralgon, realised 142/12/6 to 141/7/6, a rise of 16/3, top price and highest average of the market. Nine cows for sale at 336/12/6 to 330/17/6, and 131/11/4, top price and average for cows.

COMING SALES. Elder, Smith & Co. will offer by auction, at their Beaufort office, on Wednesday, 29th Nov., at 2 p.m., 4000 sheep on account of district graziers. The Victorian Producers' Co-operative Coy. Ltd and Australasian Estates Ltd. will hold an important clearing sale of stock plants and furniture at "Emmeralla", Moyston, on Tuesday, 12th Dec., on account of Mr Allan Vanstan.

R.S.L. BOWLING CLUB. Wednesday was opening day for the lady members of the R.S.L. Bowling Club. The members of the rink competition were Mesdames A. Vowles, C. Ward, and L. Stephens.

THE LEGION. Mr P. Larkens (president) conducted the business at the monthly meeting of the Shiraz Hall on Tuesday night of the Beaufort Sub-branch of the Legion of Ex-Servicemen and Women. Six members were present. A minute's silence in memory of fallen comrades opened the proceedings. Correspondence was read from Mrs Shaiders, returning thanks for expression of sympathy in bereavement. Received. From E. Pitt, concerning carting of load of wood for injured cyclist. - Held over for further enquiries.

Announcement! NEPTUNE OIL CO. PTY. LTD. (Incorporated in New South Wales.) has pleasure in announcing the appointment of Mr. F. W. CROCKER WILLOUGHBY STREET, BEAUFORT as agents for Neptune Quality Products. ★ WARATAH Motor Spirit ★ TRIDENT Power Kerosine ★ NEPTUNE Distillate ★ CRYSTAL Lighting and Heating Kerosine ★ NEPTUNE Motor and Gear Oils ★ NEPTUNE Agricultural Oils ★ NEPTUNE Grease and Petroleum Jellies ★ NEPTUNE Horticultural Sprays and Dusts

THE BANK YOU OWN REPORTS TO YOU. THE people of Australia own the Commonwealth Bank. Consequently you, as part owner of one of the greatest co-operatively owned enterprises in the world, will be interested in what service your bank is rendering the people of Australia. Perhaps you are one of the Bank's 4,000,000 depositors; if so, you have a double interest and want to know how the Bank is making your money serve the economic development of Australia. The Balance Sheet of the Commonwealth Bank and Commonwealth Savings Bank for the year ended 30th June, 1950, revealed some of the answers to these questions. For instance, Banking profits were 24,665,971, to which was added 24,332,489 profit made by the Note Issue Department. Indirectly, the bulk of these profits comes back to you. 252,000,000 was advanced by the Commonwealth Bank to Marketing Boards and Co-operative Societies during the last twelve months. With this money progressive payments were made to Primary Producers pending sale of their products to consumers. Great sums of money have also been advanced directly to home builders or to Co-operative Building Societies; to Local, State and Commonwealth Government bodies; to export basic foodstuffs to the British Ministry of Food. The Commonwealth Bank is owned by you-your money enables it to serve the people and the nation.

The secretary (Mr W. Williams) reported a profit of 14/ on the Legion bonfire, despite unfavourable weather. The Ladies Auxiliary are holding a penny drive on 7th Dec. for the Hospital Visitation Committee. It was decided to arrange a drive for the Legion Hospital Visitation Committee on Saturday, 16th Dec., in conjunction with the Boy Scouts. Arrangements are to be made in regard to a loud speaker for the sports. It was decided to allow a reduced rate for a piece of land owned by the Legion on the share system.

ARTHUR M. PARKER, PRINTER AND PUBLISHER. "RIPONSHIRE ADVOCATE" OFFICE, LAWRENCE ST., BEAUFORT. Telephone: BEAUFORT 47. Cards, and every Branch Letterpress Printing.

Now, more than ever, the BEST PLACE FOR YOUR SAVINGS. Invested this way they will help secure Australia's future as well as your own. Long recognised as the best place to invest sums of £10 or more, the Security Loans have been filled by Australia's savers and wise investors.

4% Securities now due for Conversion. All outstanding 4% Commonwealth Securities originally due to mature between 1953 and 1951 will now be redeemed on 2nd January, 1951, by the exercise of the Treasurer's option. Interest payments will cease on that date. If you hold any of these Securities, convert them at once into the Eleventh Security Loan and you will prevent any interruption to the income which they bring you. The column on the right gives you all the information you need about conversion. Read these details now.

For all Investors. Investors big and small can secure the benefits of investment in the Eleventh Security Loan—Bonds are available for as little as £10. Eleventh Security Loan Bonds are safe—guaranteed by the Commonwealth. They increase your savings by paying interest regularly every six months. And they are readily negotiable should you need your money in case of a personal emergency. Strengthen your own saving plan and help strengthen Australia, too, by investing your savings in the Eleventh Security Loan—to-day!

BEAUFORT RAINFALL. 1946. - January, 414; February, 650; April, 224; May, 126; June 214; July, 411; August, 301; September, 241; October, 197; November, 96; December, 359; total for year, 3720. 1947. - January, 483; April, 110; May, 60; June, 335; July, 407; August, 207; September, 281; October, 421; November, 218; December, 270; total for year, 2903. 1948. - January, 51; Feb., 167; March, 37; April, 374; May, 291; June, 208; July, 198; August, 173; September, 314; October, 172; November, 128; December, 68; total, 24,39 inches. 1949. - January, 74; February, 334; March, 183; April, 67; May, 156; June, 168; July, 153; August, 207; September, 282; October, 410; November, 282; December, 68; total, 24,39 inches. 1950. - January, 73; February, 294; March, 225; April, 122; May, 288; June, 148; July, 262; August, 207; September, 357; October, 286.

MOTHERS' CLUB. On Tuesday night the members of the Beaufort Mothers' Club held their 25th birthday party in the C.W.A. Hall, and there was a good attendance. Mrs G. Little (president) presided. Mrs Little welcomed Mrs Howells (State President of the Federation of Mothers' Clubs) and presented her with a posy. She also welcomed Cr. A. J. Hinton (Shire President) and Mrs Hinton. Greetings were sent by Mrs G. V. Wylie from Rushworth, and apologies were received for the absence of Mesdames G. H. Cuthbertson, T. G. Beggs, H. P. Mackenzie, Miss Poland, Mr E. Morton, M.L.A., and Mr Lyle. An excellent programme, arranged by Miss D. Exell, was given by Miss Gwen Blay, Miss Margaret Campbell, Miss D. Exell, Mrs Howells, Mrs C. Sinski, Mrs Howells thanked the members for their warm welcome, and said they had drawn up a constitution for the club that could always be referred to. She gave an interesting and informative address on the activities of the Federation of Mothers' Clubs. Mrs Little moved a hearty vote of thanks to Mrs Howells and the artists. This was seconded by Mrs W. Torney, and carried by acclamation. Mrs Howells then cut the birthday cake, and all enjoyed a tasty supper.

RIFLE CLUB. Last Saturday a team from Beaufort visited Ararat and was defeated by six points. Scores were very low owing to the bad night and continuing rain. Ararat scored 559, and Beaufort 533. COMMITTEE MEETING. A sub-committee was formed to extend the present shed to a length of approximately 30 ft. and to purchase a new tank and pump to include in the new shed. It was resolved to have a drive for membership, as it has dropped off quite a lot. Cr. Crick are to be bought. In future ties for trophies are to be shot off instead of decided on the count back.

TENNIS. Beaufort Tennis Club Ladies' opening day was held on Wednesday, 22nd Nov., when a very enjoyable afternoon's tennis was played. It was one of the most successful opening days for some years, and as other ladies intend joining, a very successful season is anticipated. It is encouraging to see so many new members. Winners of the Doubles were Mesdames M. Cole and G. Marshall. Trophies were donated by Miss B. Schlicht and Mrs Geoff Cuthbertson. On Tuesday, Saturday, 25th, is the club's opening day, and with the club's opening day, a good afternoon's tennis is assured. All players to be at the courts at 1.30 p.m. sharp. In future play on Wednesday will commence at 2 p.m.

SAVE for Security. The Commonwealth Bank is owned by you-your money enables it to serve the people and the nation. Interest is payable each six months at 4% per annum for 11-14 years or at 2% per annum for three years. (Investment in 2% Securities must be for 21,000 and multiples thereof.) Cash Investment. As well as those with maturing Securities to convert, everyone may buy Bonds (£10, £20, £50, £100 or £1,000) or Inscribed Stock through any Bank, Savings Bank, Money Order Post Office or Stockbroker. Interest is payable each six months at 4% per annum for 11-14 years or at 2% per annum for three years. (Investment in 2% Securities must be for 21,000 and multiples thereof.)

# The Riponshire Advertiser

SATURDAY, NOV. 25, 1950.

ADVERTISERS and Printing Customers please note that the "Riponshire Advertiser" Office will be closed for a Fortnight during the Christmas Holidays. There will be no issue of the paper on Saturday, 30th

*Entrancing*

OWEN'S — OWEN'S  
— ARE —

GUARANTEED A LIFETIME.  
"SUPER STAR" CYCLES

WANTED TO BUY, Building Al-  
lotment, 1 or 1-acre (light and  
water essential). F. TOWNSEND,  
1338 Sturt St., Ballarat.  
ORDERS TAKEN

LEGION BONFIRE — Des-  
pite unfavourable weather, the  
Beaufort Legion bonfire on Camp  
Hill on Friday night, Nov. 3rd,  
was well attended. Saveloys  
and fireworks were sold to ad-



# The Riponshire Advocate

SATURDAY, NOV 19 1911

Most Versatile Tractor

WOOL SALES

STRACHAN & CO. LTD

Trawalla  
(Beaufort)



BFT

fort), 240d, aaa lms 240d; Cahir-  
bionig (Middle Creek), 231d, sup

SPECIALS