


# Brunswick Tram Depot Upgrade

Tell us what's important to you as we design and deliver upgrades to the Brunswick Tram Depot.

REVIEWING FEEDBACK

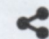
 CLOSED 03 AUGUST 2022

**Overview**

**Participate**

**Timeline**

**+ Follow**

** Share**

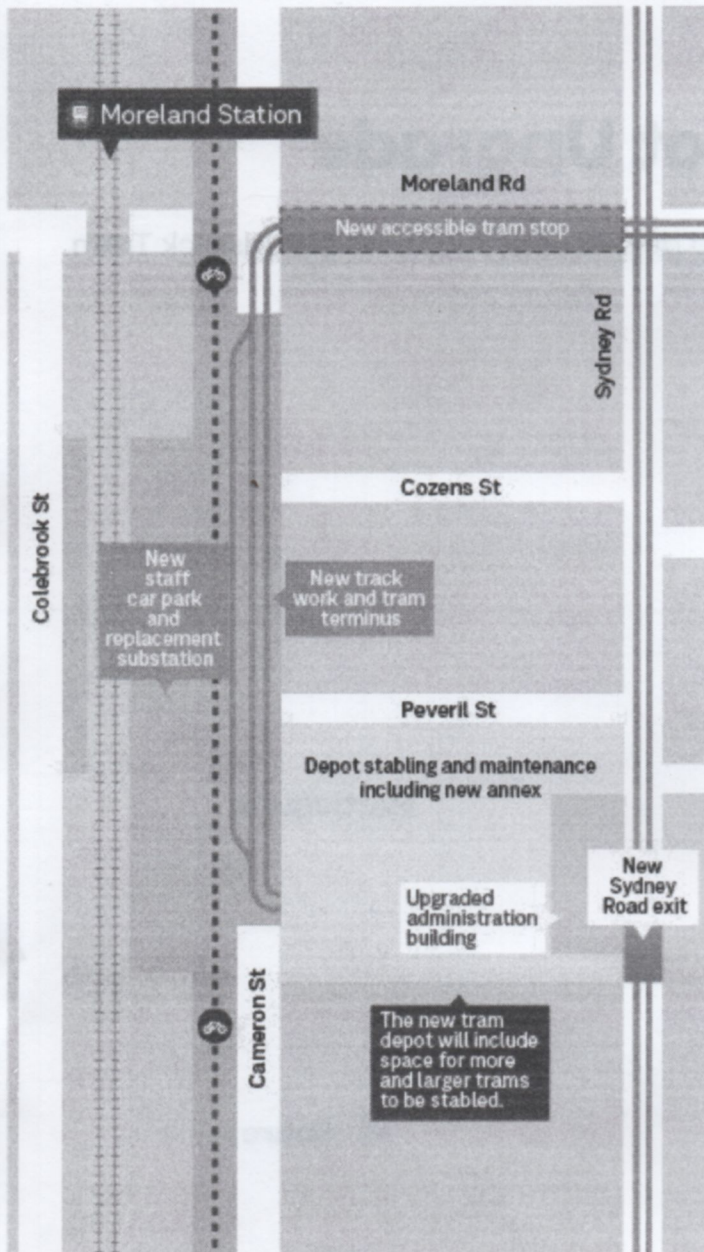
We're upgrading the Brunswick Tram Depot to accommodate more large trams and improved passenger services.

The upgrade involves:

- a new, larger carpark under the elevated rail line for additional depot staff and a new tram substation to replace the aged one
- upgrades and extension of the depot administration and maintenance facilities to support an increased number of trams and staff
- additional tram stabling within the depot and a new connection into Sydney Road to support Route 19 morning run-out
- additional tram sidings on Cameron Street for a new terminus
- a new accessible tram stop on Moreland Road to improve safety and accessibility



## Precinct layout



We'll do our best to minimise the impact of construction on the tram network and local community and will deliver the project in two stages:

- Staff carpark and administration building works (2023)
- Depot stabling, new sidings on Cameron Street, tram stop on Moreland Road and upgraded substation (2023 to 2024/25)

We want to design and develop the project in a way that:

- Integrates with the character of the local area and is visually compatible
- Uses landscaping where possible to integrate the facility in its setting
- Provides broader community benefits where possible
- Minimises construction disruptions as far as possible to local businesses, residents, public transport users and commuters



## Come and talk to us

The information sessions for this stage are now complete. Thank you to everyone who attended and provided feedback.

## How to participate

Thank you to everyone who provided feedback. The survey is now closed.

Later in the year, further feedback will be sought on the tram stop upgrade and tram power substation. This will help us refine the tram stop design and develop the substation design to fit in with local character.

## What are the planning requirements for this project?

We are seeking to declare the project as a State Project as per Clause 52.30 of the Victoria Planning Provisions.

This means

- Results of consultation on the overarching plan will be provided to the Minister for Planning.
- This will inform the Minister for Planning's assessment of the project under Clause 52.30.
- There are no rights of appeal following a Planning decision
- We will report back to the community what we've heard and how we're responding to feedback themes. We will continue to communicate and share progress updates over the life of the project.

For more information on Clause 52.30 please refer to the FAQ section.

## Next steps

We'll share information that's important to the community about the project and use a variety of approaches. We'll add new information and modify our approach where needed.

We'll take on board community interests as far as possible in our designs and in our delivery of the various projects.

We will report back on what we heard and how we'll reflect the key issues raised in the



# Participate

1 activities available

Form - Closed

## Brunswick Tram Depot Upgrade

survey is closed

## FAQs - The projects

### Staff car park and Substation area

The area under the newly elevated rail line provides opportunities for the new car park and replacement substation.

We'll seek feedback to help us mitigate visual impacts and best fit the local character.

### Car park

- We're replacing the existing staff car park at the Brunswick depot with a new car park in the space under the newly elevated rail line
- The car park provides for additional staff needed at the upgraded depot.
- The car park will be sealed asphalt and there will be new lighting installed for safety.
- The carpark will be operational as soon as construction is complete.
- The carpark will be located to the south of the recently completed activity area.

### What will be the impacts of these works?



### Moreland Terminus



- Currently the terminus is located in the Depot for drivers to reverse the tram back into service.
- To accommodate the existing Route 6 terminus and additional services on this route, a larger terminus is required.
- We are proposing to move it from the current constrained site to the most viable location, which is Cameron Street.

### **What will be the impacts of these works?**



#### Upgraded Moreland Tram Stop

- We are upgrading the tram stop on Moreland Road to make it more accessible.
- The upgraded tram stop will enhance connectivity between transport modes at the precinct
- We will seek feedback on feedback on what's important to you to help us determine the most viable option

### **What will be the impacts of these works?**



#### Depot Upgrade (depot building, stabling yard and tracks)

- We're upgrading the depot building, stabling yard and tracks to house more and larger trams.
- The number of trams stabled will grow from the current 49 to an expected 64.
- The number of tracks in the depot will increase to make room for more and larger trams.
- The depot upgrade includes new and upgraded maintenance facilities to service the tram fleet.
- The staff building will also be upgraded to cater to more drivers and tram employees.
- We will introduce a direct exit for trams on to Sydney Road to free up the Moreland Road and Cameron Street intersection during the morning peak.

### **What will be the impacts of these works?**

