

TRAM

109

Box Hill > Port Melbourne

Tram 109 Project >

Friday, 2<sup>nd</sup> May 2003

## **BOX HILL EXTENSION OPENING**

FOR IMMEDIATE RELEASE

Yarra Trams' launched its route 109 tramline extension to Box Hill this morning with festive celebrations held at the new route terminus at Market Street on Whitehorse Road.

Attending the launch was the Premier, Steve Bracks, Minister for Transport, Peter Batchelor, Yarra Trams' Chief Executive Officer, Hubert Guyot and the Mayor for the City of Whitehorse, Jessie McCallum.

Mr Guyot said: "This is a very special day for Yarra Trams and the Box Hill community. Not only will people now have access to the tram, the tram stops are fully compliant with the Disability Discrimination Act, providing complete access for those with mobility impairment."

"The extension also demonstrates modern principles of beautification and incorporates infrastructure harmoniously with its environment. The piazza-style terminus, tracks surrounded by grass and the undergrounding of services to reduce clutter to the skyline, are three fine examples of this."

Yarra Trams' also invited the community to attend the launch of the tramline that will make visiting Box Hill's hospital, TAFE, shopping centre, train and bus interchanges so much easier.

The launch featured guest speakers, music, a horse-drawn tram and a community art project coordinated by RA+ARtAt. The project featured art completed by the local community, including a box sculpture at the terminus and colourful wooden passengers at the new tram stops.

The Box Hill extension forms part of the Tram 109 project, a joint initiative with the Victorian State Government to create a showcase tram route embodying the very best and most modern passenger transport infrastructure and services.

Mr Guyot says: "Already the Tram 109 project has begun to show Melburnians what we can achieve with real commitment to the passenger transport system from government, stakeholders and the community."

# Release

The Box Hill tramline extension lengthens the 17 kilometre route by 2.2 kilometres, from its previous terminus at Union Road, Mont Albert, to outside the busy Box Hill shopping centre. Grass-covered track has been installed from Elgar Road to the terminus.

The extension cost a total of \$28 million and will begin to operate scheduled services from Sunday, 4<sup>th</sup> May 2003. The Citadis low floor trams will exclusively service route 109, Yarra Trams' showcase route.

A free tram shuttle service will operate between Box Hill and Mont Albert between 10.00am and 4.00pm on Saturday so the community can experience the new extension before regular services commence.

Box Hill Central is the largest transport interchange in suburban Melbourne, servicing 18 different bus routes and the Lilydale and Belgrave train lines. Each day there are 17,000 train travelers and 3700 bus passengers using the interchange, and up to 330,000 people are expected to use the new Box Hill extension each year.

For further information, please contact:  
Kate De Clercq  
0412 101 627



Photo was taken by Mr A. Bailey on 30 September 1916

Official tram at the opening of the line to Mont Albert in 1916



Spring 2002

Issue 3

TRAM

# 109

Box Hill > Port Melbourne



*Making the Connection*

**Our settlers rode a white horse to town.  
Thankfully now there's an easier way to get there.**



Transport's come a long way since Box Hill's settlement. But whether by horse or our new low floor trams, the key aims remain the same. Freedom, access and choice. And we're happy to have improved all this, and more, with the upcoming completion of Tram 109's Box Hill extension.

**Box Hill's been thriving since the 1840s. Now your own community has never been closer.**

While Tram 109 takes you straight to the train station, our Box Hill extension is about a lot more than just another way to get to the city. It gives you greater access to your own community and surrounding areas.

So whether it's the movies in Balwyn, shopping at Box Hill Central or a bowl of pho soup on Victoria Street, you'll find it all on your doorstep. With no parking hassles. There's never been an easier way to visit everything you love about Melbourne.

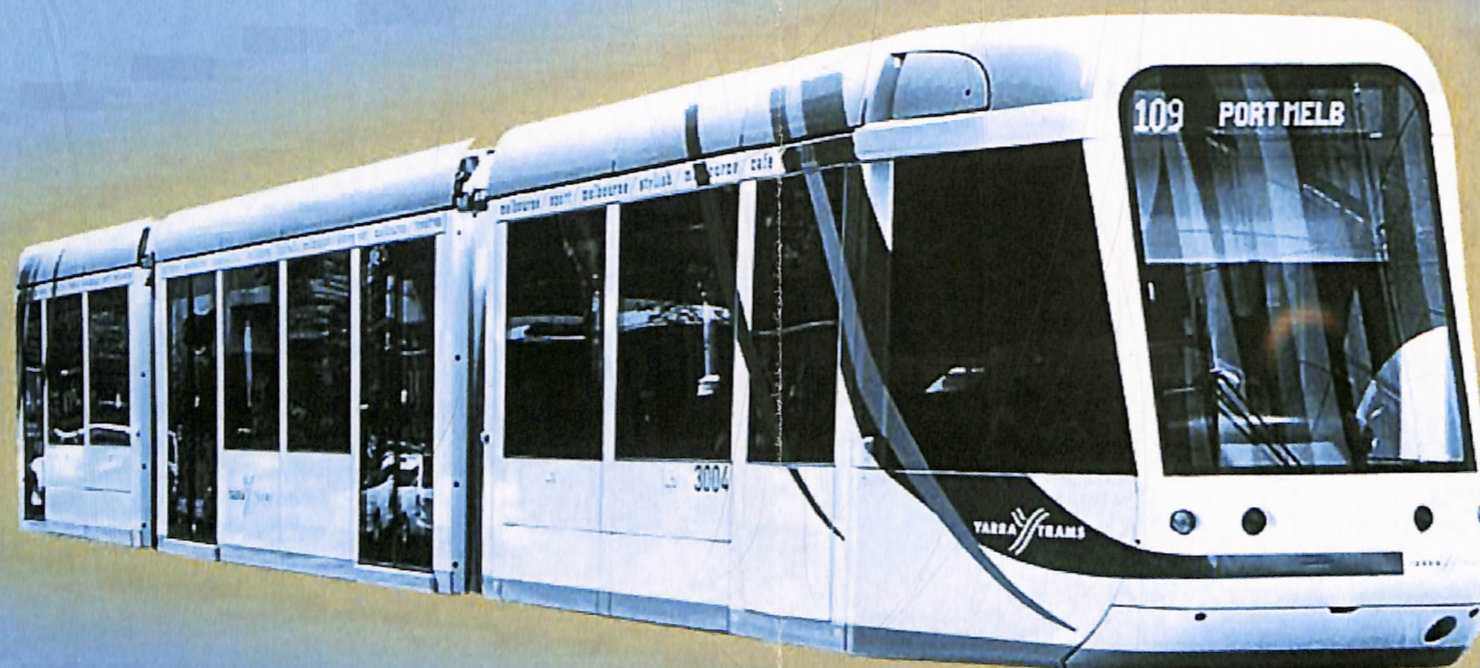


**Just like Streeton before us, our sole aim is to preserve Box Hill's natural beauty.**

It's clear why Arthur Streeton joined Box Hill's artists' camp. It's such a beautiful environment. And we're planning to keep it that way. With grass tracks on our new Box Hill extension and our award winning Superstops, recognised for excellence in community design.



There are also plenty of environmental benefits of tram travel for all Box Hill residents. Not only do our new low floor trams reduce noise and pollution, they reduce car dependency as well. Which can only be a good thing for the future of Box Hill.



**Not everyone can ride a horse.  
But anyone can catch Tram 109.**

Public transport has long been inaccessible for many, like the elderly and people with disabilities. Until now, that is. Our new low floor trams, state of the art Superstops and Kerb Access stops are easy to use and provide transport freedom to all.

In fact, with nine new wheelchair accessible stops on the Box Hill extension alone, and twelve more along the rest of Route 109, you'll have the freedom to travel across Melbourne. It's part of our plan to give all Melburnians access to travel throughout their city.



**There's nothing historic about our state of the art new trams.**

With all this talk of increased access and freedom, let's not forget the tram itself. Our new low floor trams represent international cutting edge design and technology. For comfort, safety, speed and accessibility, they are the most up to date public transport available. So for the smoothest ride to everything you love about Melbourne, catch Tram 109.

**Today's Whitehorse residents enjoy the best of both worlds.**

By extending Tram 109 to Box Hill, we're integrating the most state of the art public transport with Box Hill's unique community and environment. It's something we're extremely proud of, and we're sure you'll love it too. Look out for information about our launch party in your local paper.



**Tram 109. You'll love it as much as we do.**



## < MESSAGE FROM YARRA TRAMS >>>

The Box Hill extension of tram route 109 encompasses technical, aesthetic, and accessibility innovations available in public transport today.

While the advantages of greater public transport accessibility are obvious, it is also important to Yarra Trams that the new infrastructure be incorporated harmoniously with its environment.

The grassed surrounds of the tracks is a first for Melbourne and the effect is both practical in its separation of trams and cars, and aesthetic, embracing the feel of Box Hill's existing stretches of green lawn and trees.

Along the extension, the latest tram stop innovations have been employed, and while they are larger than traditional kerb side stops, they are safer and smarter in their appearance.

The poles supporting lights and overhead tram wires have been designed for minimal clutter of the skyline and are attractive in design.

The Box Hill terminus has also been designed to reflect its environment taking consideration of the fact that it will be used by many passengers to interchange with trains and buses.

While these visual aspects are important, noise is also an environmental aspect that has been considered through the use of rubber boot technology when laying the track.

This technology cushions the track and causes less noise as the tram passes.

Where before public transport was merely functional, today it is considered in its overall importance in our daily lives.

Trams offer better comfort and an attractive appearance, and when combined with more frequent and regular services, they form a perfect form of transport for travelling around your community.

Hubert Guyot  
Chief Executive Officer  
Yarra Trams

## FACTS ABOUT LAYING TRAM TRACKS >

### <<< DID YOU KNOW??? >>>

- > Track is laid in sections of around 360m over one weekend by a crew of up to 60 workers, 24 trucks and 12 excavators
- > Track is welded into 90m to 100m lengths before being laid
- > Before the track is laid, a 50cm deep and 6m wide pit is excavated
- > Around 125mm of crushed rock is laid as a base, followed by concrete sleepers at 3m intervals
- > Strips of rail 90m to 100m long are then laid on the sleepers and welded together
- > Rubber boots, which come in 90 metre rolls, are wrapped around the rail to reduce the noise of the tram and insulate the rail to prevent electrical interference with other services
- > Rail is then attached to the sleepers and the track levelled and aligned to within 1mm of its correct position
- > Around 300mm of fast-setting, high-strength concrete is laid to within 30mm of the top of the rail, before the work is finished with a 30mm surface of asphalt
- > The road is then reopened to traffic, within 53-55 hours of having been closed.

### >>> FURTHER INFORMATION

Please contact the Tram 109 Information Line >

1800 77 66 22

[www.linkingvictoria.vic.gov.au/tram109](http://www.linkingvictoria.vic.gov.au/tram109)

For all train, tram and bus information call >

131 638

(6am - 10pm)

欲用廣東話瞭解詳情

(03) 9280 0786

Για περισσότερες πληροφορίες στα ελληνικά

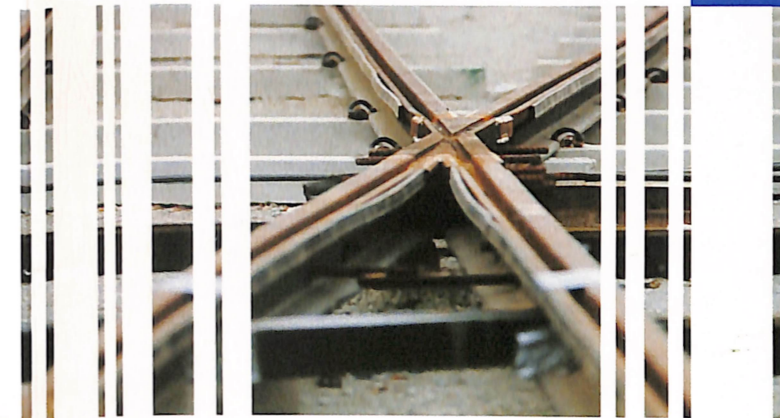
(03) 9280 0787

Per maggiori informazioni in italiano

(03) 9280 0788

Muốn biết thêm thông tin bằng tiếng Việt

(03) 9280 0789



# BOX HILL TRAMLINE EXTENSION