



The rolling plains of the Penrith district with Sydney on the eastern horizon form an attractive backdrop for an interurban train from Lithgow as it descends the Blue Mountains

—H. R. Clark

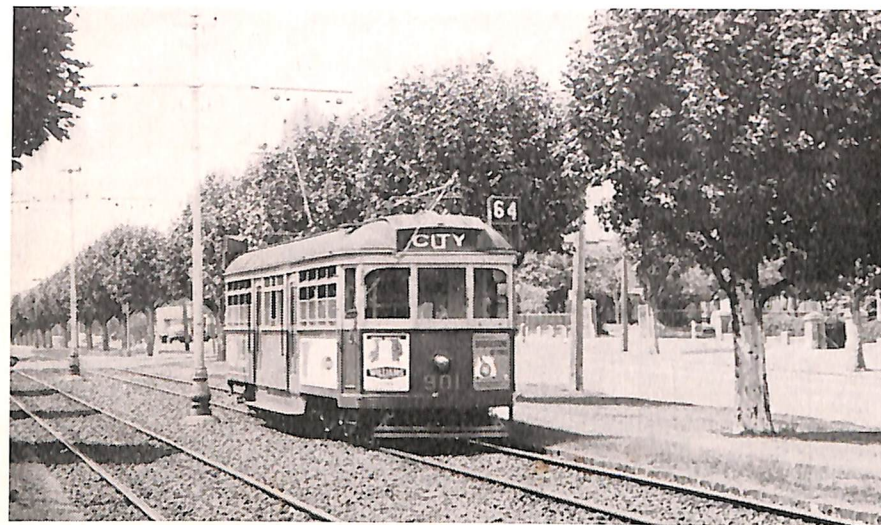
Electric transport, whether by street vehicles, subway, or suburban or main line railway, is a fascinating subject. It is an interest shared by thousands throughout the world, of all ages and occupations.

In this country, the Australian Electric Traction Association caters for a wide range of tastes within the field. It is affiliated with similar organisations in Europe, America and Asia as well as New Zealand.

The A.E.T.A. was formed in Victoria in 1943 by a group interested in electric traction and aware of its value to the community in furnishing mass transport. It is a non-profit, non party-political organisation concerned with the collection and dissemination of information on the history, operation, economics, status and potential of electric transport.

Whether you are interested in vehicles, equipment, operation, economics, history, or even tram tickets, at a technical or "fan" level, you will find others who share your interests among A.E.T.A. members. Many spend much time in historical research, and have discovered a good deal of fascinating material. Others interest themselves primarily in the details of present-day tramway or railway operation. Still others are concerned for the future of public and private transport — together with the wider questions this raises — and seek to influence public policy in favour of improved public transport facilities.

The A.E.T.A. is strongly opposed to the forces devoted to the abandonment and suppression of electric transport facilities wherever possible with accurate, up-to-date facts and information. One of the main elements of Association policy is the advocacy of the balanced development of both public



A picturesque view of tramway segregation in Dandenong Road, Melbourne, showing a city bound SW6

—A. W. Perry

transport and automobile facilities, so as to provide economical, integrated urban transport systems. Furthermore, the Association is convinced that only **Rapid Transit** — preferably in the form of electric rail transport, combining the low cost and convenience of tramway operation with the high-speed, congestion-free characteristics of a suburban railway — can form the backbone of an urban transport system.

### ADVANTAGES OF MEMBERSHIP

Joining the Association entitles a member to receive "Electric Traction", the official monthly journal of the Association, which is well illustrated and contains news and articles on electric traction, both Australia-wide and international. "Electric Traction" not only provides the latest news, but features articles on electrical equipment and new technical developments in the industry as well as information descriptive of the technical and operative sides of various systems. The history of the various systems and equipments is covered. The modelling of electric vehicles is also described from time to time.

### ACTIVITIES

The three branches in Melbourne, Sydney and Adelaide hold regular meetings, at which lectures, slide and film shows are presented.

Excursions by train and tram are organised from time to time over interesting routes. Such trips are of a social nature, and members often bring their families and friends.

Once a year an interstate Convention is held, and members may then see electric operation in other cities. Group travel means cheaper fares, and excursions are often arranged to depots, workshops, and other normally inaccessible facilities.

The A.E.T.A. maintains a small but growing Library of electric transport material which has much to offer.

The Association's Service Department provides, at reasonable prices, books, maps, photographs, and other items of interest.

### HOW TO JOIN THE A.E.T.A.

A membership form, setting out current rates, will be found attached to this leaflet. Applicants between the ages of fourteen and eighteen may join as Junior Members at reduced subscription. Country and Overseas Members, and those in States in which no Branch is as yet organised, enjoy a similar reduced rate.



**APPLICATION FOR MEMBERSHIP**

*Secretary W.H. CRAVEN  
31 CORHAMPTON RD  
NORTH BAKWYN  
VIC 3104*

Dear Sir,

I hereby apply for membership of the A.E.T.A. I enclose Cheque/Postal Order/Money Order for..... as payment of one year's subscription for membership and monthly magazine.

Yours faithfully

Name.....

Address.....

State.....

Current Subscription Rate.....

Date of Birth.....

**OFFICE USE ONLY:**

Nominated.....

Seconded.....

Notice of Motion.....

Admitted.....

Ordinary Members *\$ 5-75*

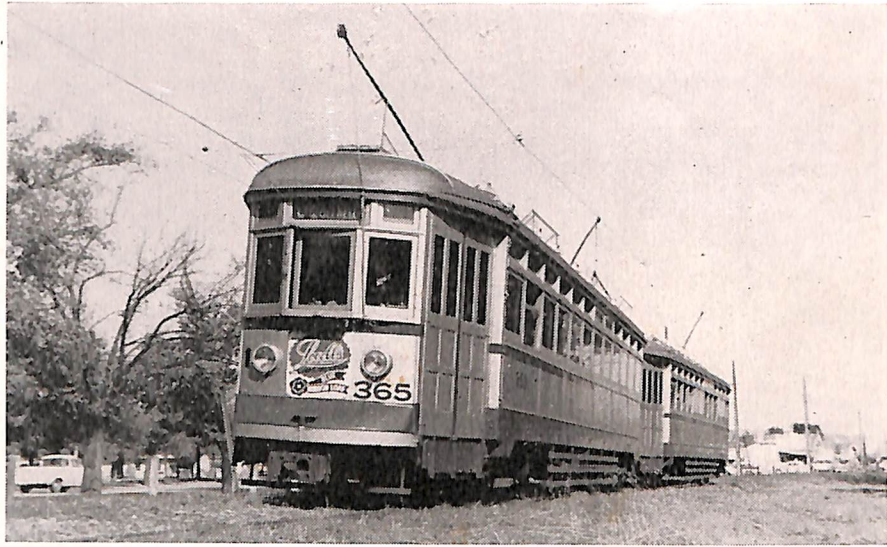
Junior Members (15-18) *\$ 5-00*

Country Members *\$ 5-00*

Overseas Members *\$ 5-00*



Without fumes or fuss, the trolleybus climbs the steep grade from Brisbane's business area



Speedy and impressive aptly describes these Adelaide H class cars on Australia's only rapid transit line

—H. R. Clark

Members travelling interstate may, on request, obtain introductions to members in principal cities of the State they are visiting. Those contemplating travel abroad can be assisted in contacting affiliated organisations.

**ARE YOU INTERESTED IN**



**SPEED AND EFFICIENCY**

Rapid transit at 60 m.p.h. along the Ruhr Expressway in West Germany

—Fritz van Dam

- **TRAMWAYS**
- **RAPID TRANSIT**
- **ELECTRIC RAILWAYS**
- **TROLLEY BUSES**

Then the Australian Electric Traction Association caters for you