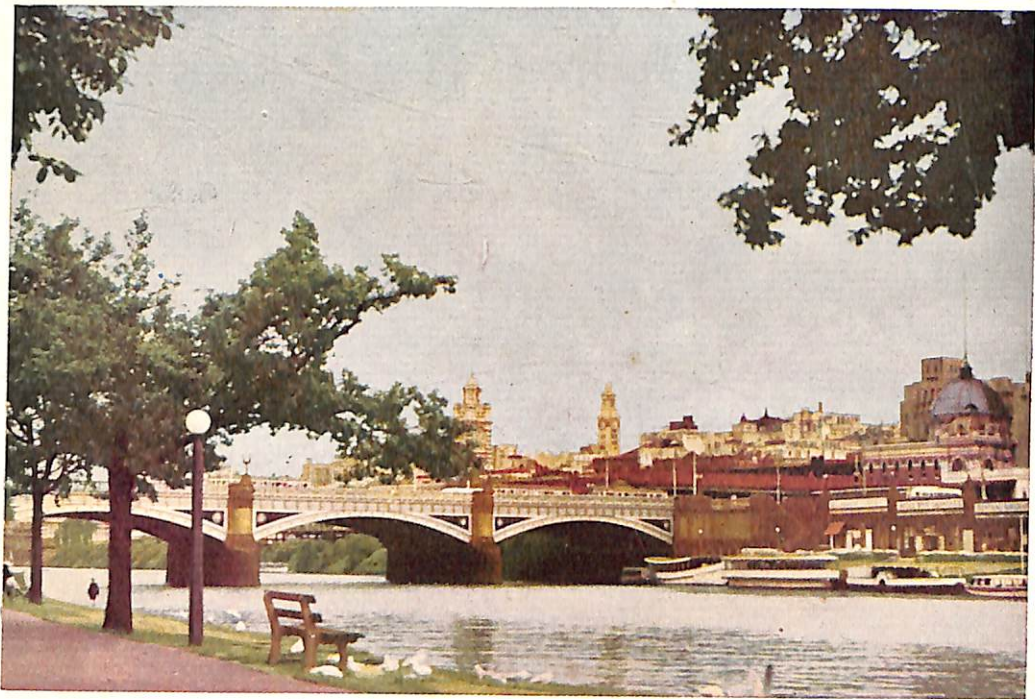


See *Australia*
First





In Alexandra Gardens, Melbourne, Vic.



River Yarra and Prince's Bridge, Melbourne, Vic.



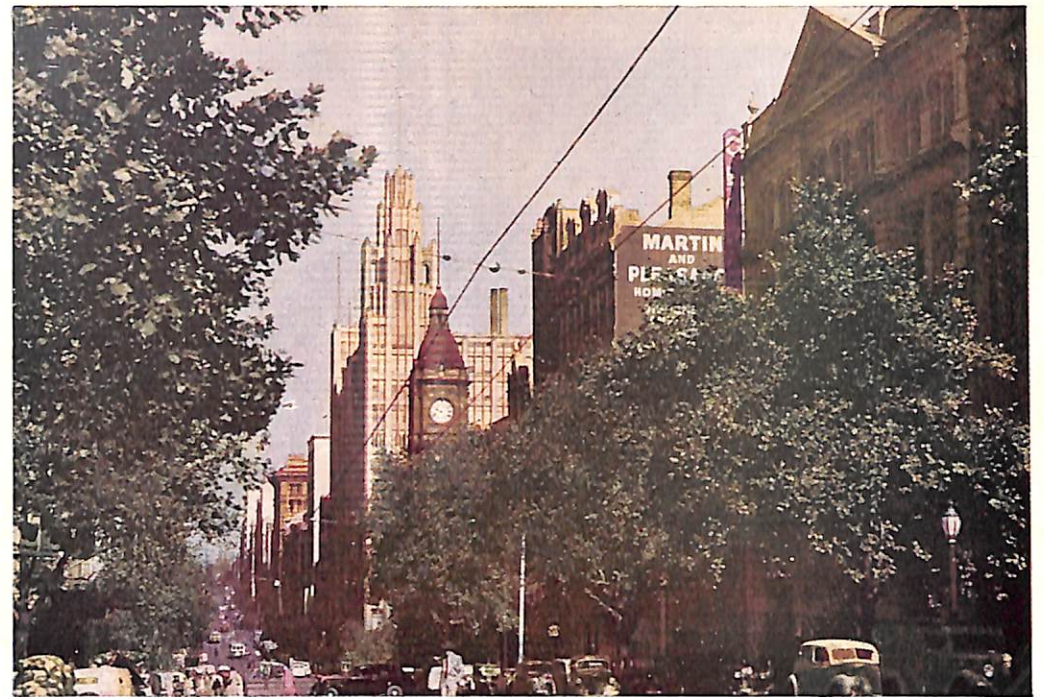
Flinders Street Railway Station, Melbourne, Vic.



Entrance to City from St. Kilda Road, Melbourne, Vic.



Flinders Street, Melbourne, Vic.



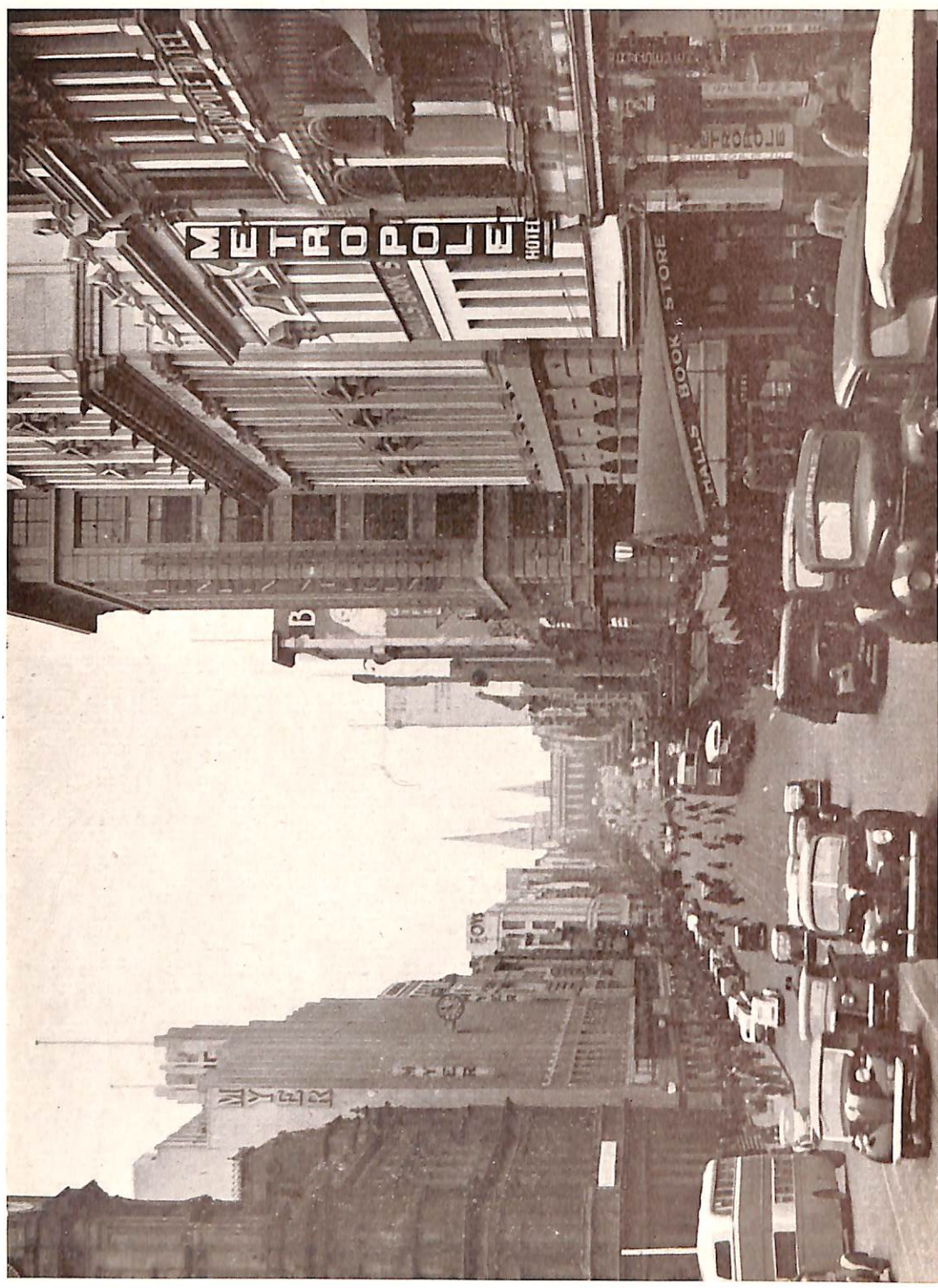
Looking Down Collins Street, Melbourne, Vic.



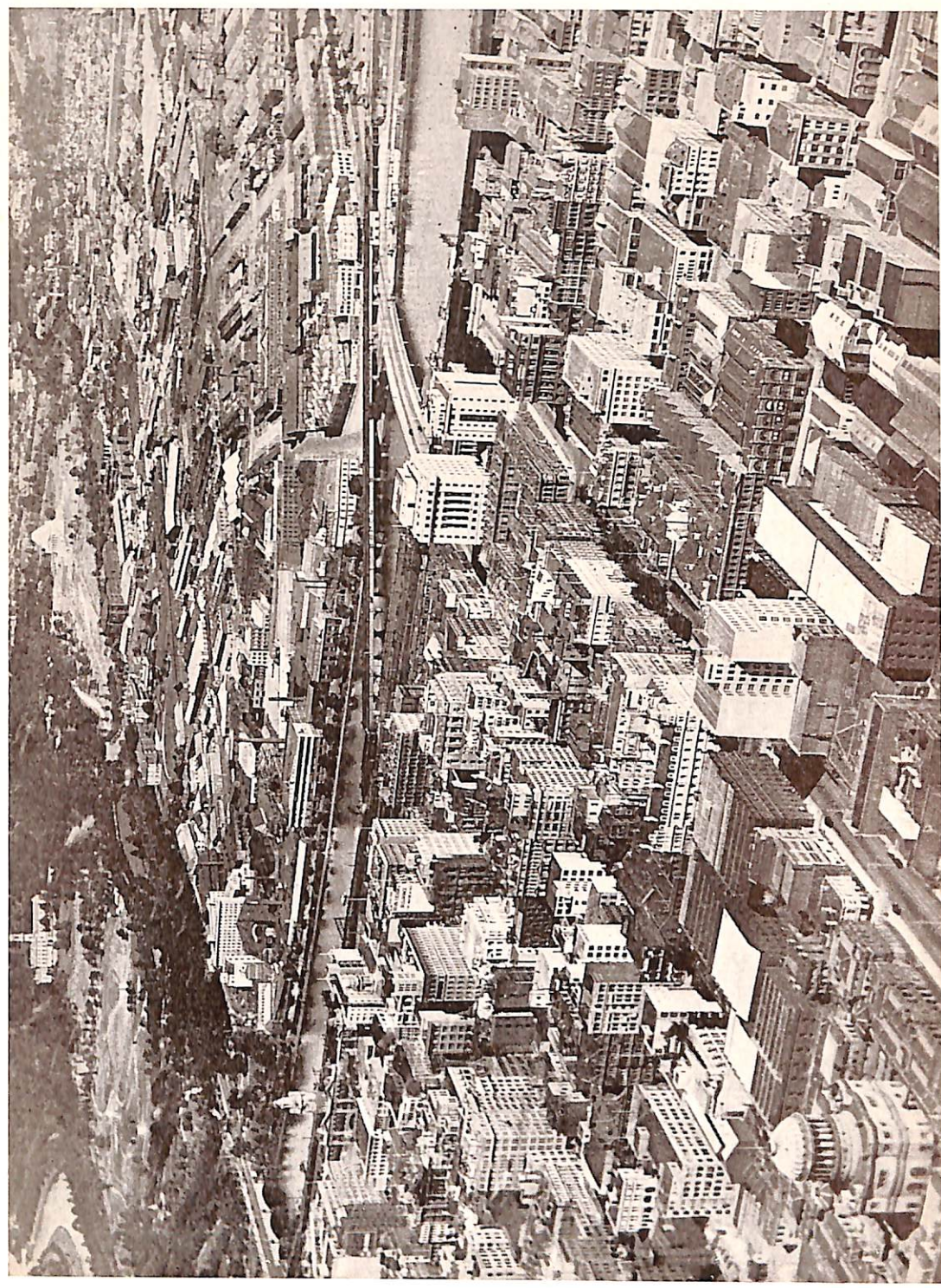
The Exhibition Buildings, Melbourne, Vic.



State Parliament House, Melbourne, Vic.

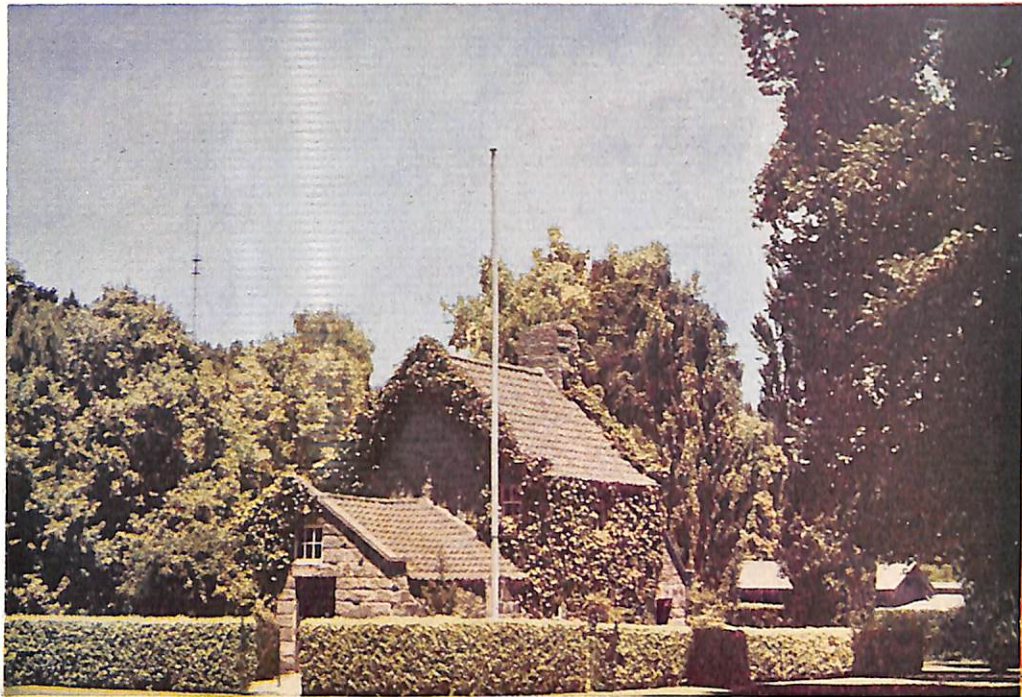


Bourke Street, Looking Towards Parliament House, Melbourne, Vic.



An Interesting Aerial View of Melbourne, Vic.

(Photo courtesy "The Argus")



Captain Cook's Cottage, Fitzroy Gardens, Melbourne, Vic.



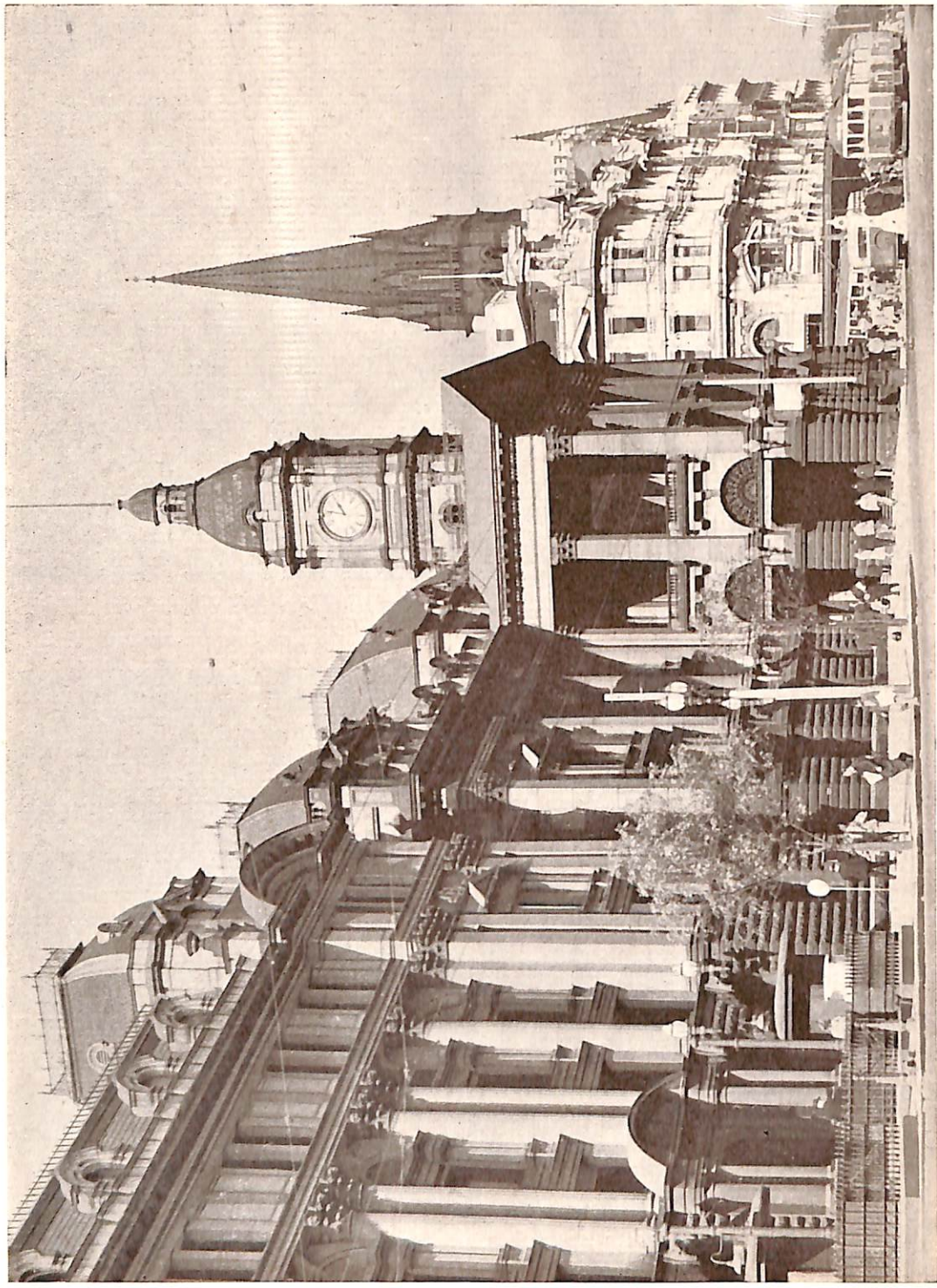
Burns' Memorial, St. Kilda Road, Melbourne, Vic.



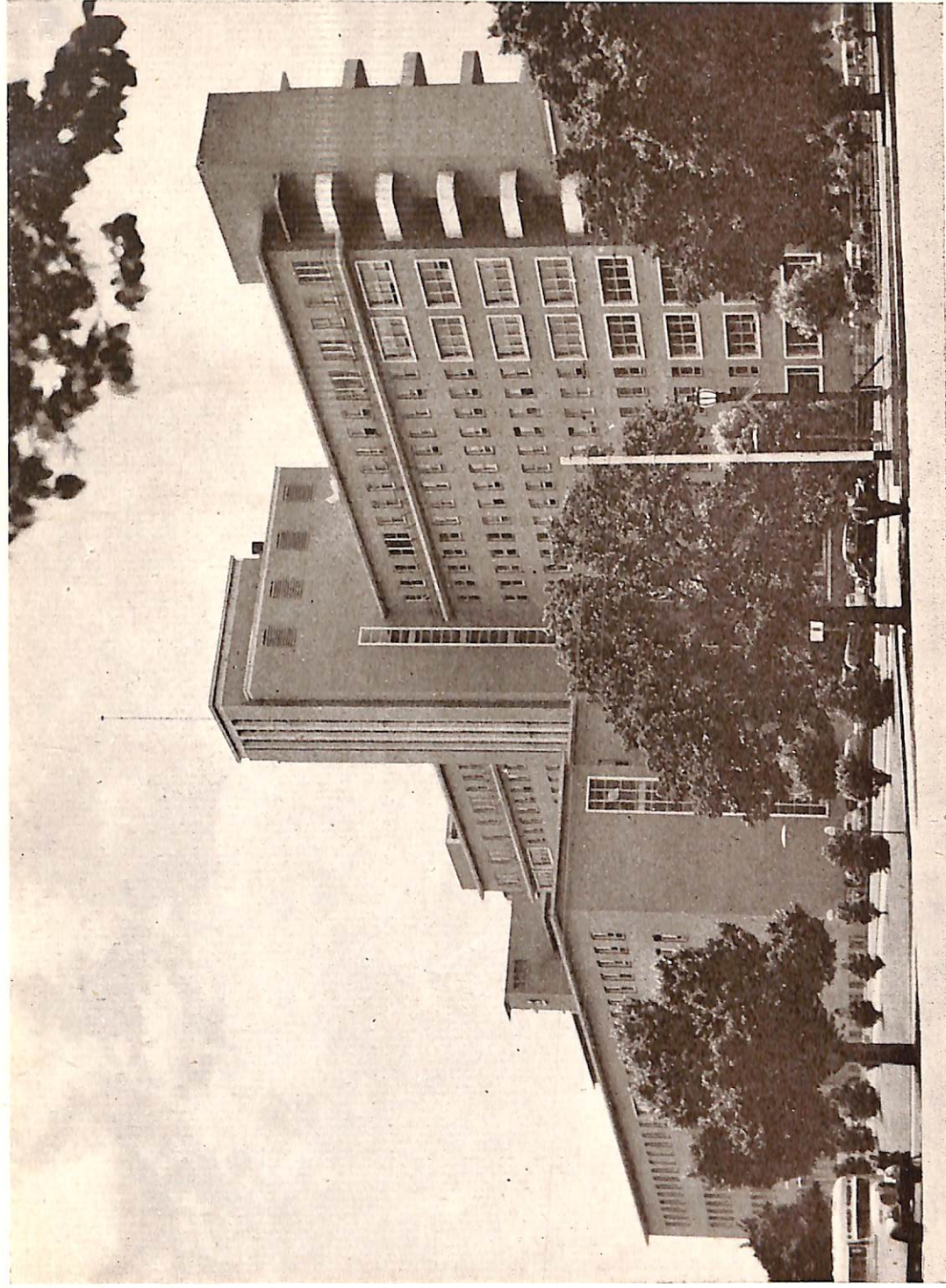
St. Kilda Road, Melbourne, Vic.



St. Paul's Cathedral and Prince's Bridge, Melbourne, Vic.



The City Hall, Melbourne, Vic.



The Royal Melbourne Hospital, Main Entrance, Parkville, Vic.



Collins Street from Treasury, Melbourne, Vic.



In Queen Victoria Gardens, Melbourne, Vic.

Melbourne — City of Unrivalled Loveliness

MELBOURNE was founded in 1835 by John Pascoe Fawkner. Two years later the little township was given its name by Governor Bourke. Today Melbourne is the seventh city of the British Empire, a charming graceful capital with a population exceeding a million people. It has all the amenities of shops, clubs, theatres and hotels. There are Museums, a National Gallery, a Public Library, modern hospitals, and a University whose degrees are accredited throughout the world.

An imposing city, Melbourne has been laid out wisely with wide streets, tree-lined avenues and rolling expanses of gardens and parkland. It is served by a fine port capable of accommodating the largest liners, a modern railway system, an up-to-date airport and arterial roads.

There is something clean and fresh about the city. Each hour of the day—the hazy dawn, the brilliant noonday sunlight, the mellow dusk and the starry night—shows a new and enchanting mood of this modern metropolis.

Collins Street is the pride of Melbourne City, and its tree-lined eastern end with occasional brightly-coloured awnings has a pleasant, almost Parisian charm. The street is dominated from the east by the Treasury Building, a splendid example of Renaissance architecture. To stroll under the trees down Collins Street hill is to sample the essential flavour of Melbourne. But no matter what part of the city you are in, you are within easy walking distance of one or other of the verdant public gardens. The Fitzroy Gardens, with its famous conservatory, and the Treasury Gardens are at the eastern end of the city; the Flagstaff Gardens near the western end; and immediately south-east of the River Yarra the Botanic Gardens. The latter comprise 100 acres of rolling lawns, native and foreign trees, lakes and brilliant floral displays. From various points in the Botanic Gardens, which are situated on rising ground, sweeping panoramas may be obtained of the city and its nearer suburbs.

The pillared majesty of the National Gallery and Museums symbolises the high level of Melbourne's cultural life. The number of Old Masters and outstanding works of modern schools is considered extraordinary for a Gallery so far removed from the world's art centres. Etchings, pottery, collections representative of the fine arts of all ages and nations, and examples of aboriginal work also find their place here. The Public Library, which is situated in the same block of buildings, boasts the most comprehensive range of reading in Australia. It contains over 600,000 volumes. Further evidence of Melbourne's high cultural level is the existence of the city's own symphony orchestra, which has been highly praised by visiting conductors. Concerts by world-famous artists are a regular feature of Melbourne life.

In Melbourne's night life there is ample entertainment for the visitor, including theatres, movies, vaudeville and celebrity concerts. The sport-loving community is amply catered for by numerous racecourses, tennis courts, golf courses, football and cricket grounds. The galaxy of beach resorts along the shores of Port Phillip Bay brings all the thrills of the seaside within easy reach of Melbourne's population. The Dandenong Ranges, which are within an hour's journey of the city, are an Arcadian paradise of fern-glens, towering mountain trees, streams, waterfalls and bird life.

