

No. 2.

TRAMWAY BOARD

MELBOURNE, VICTORIA

REPORT

.. AND ..

Statement of Accounts

Submitted to the Hon. the Minister of Public Works,
Pursuant to Section 15 of the "Tramway Board Act 1915"

For Year ended 30th June, 1918.

With the Compliments of the



Tramway Board



REPORT

.. AND ..

STATEMENT OF ACCOUNTS

Submitted to the Hon. the Minister of Public Works,
pursuant to Section 15 of the "Tramway Board Act 1915"



For Year ended 30th June, 1918

TRAMWAY BOARD

MELBOURNE, VICTORIA



Chairman: COLIN TEMPLETON, Esq.

Members:

ALDERMAN SIR DAVID HENNESSY, Knt.

ALDERMAN SIR HENRY WEEDON, Knt. | CR. FREDERICK THOMAS HICKFORD

CR. ALEXANDER RENPREW

Solicitor:

W. B. McCUTCHEON

General Manager:

H. A. WILCOX

Secretary:

W. O. STRANGWARD

Head Office: BOURKE STREET, MELBOURNE

TRAMWAY BOARD

The Honorable the Minister of Public Works,
Department of Public Works,
Melbourne.

Sir,

The term for which the Tramway Board was appointed having been extended until 31st October, 1918, it has the honor to present to the Minister (pursuant to Section 15, Act 2818) a Report of its Proceedings for the year ended 30th June, 1918.

In view of existing conditions, the Board, whilst effecting many improvements in the undertaking, has avoided Capital Expenditure except where a direct and immediate benefit to the travelling public would result.

PASSENGER TRAFFIC.

The following statistics show the very large increase of Passengers carried, Revenue and Train Mileage during the year under review. Charts are also appended which exhibit the four weekly figures for the past three years in graph form:—

Year ended 30th June	Traffic Receipts	Passengers Carried	Average Fare per Passenger	Train Mileage	Revenue per Train Mile
1909 ..	£555,614 ..	65,488,902 ..	2.036d. ..	9,631,534 ..	13.844d.
1913 ..	£741,004 ..	88,172,687 ..	2.017d. ..	11,610,729 ..	15.317d.
1914 ..	£756,818 ..	90,315,178 ..	2.011d. ..	11,827,786 ..	15.356d.
1915 ..	£729,372 ..	87,148,059 ..	2.009d. ..	11,745,053 ..	14.904d.
1916 ..	£805,778 ..	96,107,763 ..	2.012d. ..	11,924,472 ..	16.217d.
1917 ..	£841,784 ..	103,118,379 ..	1.959d. ..	12,423,929 ..	16.261d.
1918 ..	£901,474 ..	113,034,157 ..	1.914d. ..	12,833,029 ..	16.859d.

The Revenue earned and Passengers carried for the year, compared with the year ended 30th June, 1917, show increases of 7.09 per cent. and 9.61 per cent. respectively.

The lower average fare per passenger for the year ended 30th June, 1917, was caused by the reduction of the cash fare upon most of the routes from 3d. to 2d., and was again slightly reduced in the following year by a revision of the method of recording children's fares.

The greatest revenue for a single day during the year was £3,573, on 21st December, 1917, and the revenue for the month of March, 1918 (£83,169) exceeds by nearly £3,000 that taken in any previous month since the inception of the tramways.

Since 1st September, 1916, two-penny fares, previously payable only by tickets sold at six for one shilling, have also been payable in cash. Although no reduction is thus obtained by passengers, 32 per cent. of all two-penny fares are still paid by ticket.

FINANCIAL STATEMENTS.

Appended hereto will be found Balance Sheet and Statement of Operation, etc., of the Tramways for the year ended 30th June, 1918 (Appendices Nos. 3 to 5).

The Liabilities shown do not include the Contract entered into for lighting the Cars by Electricity.

Whilst the total Revenue from the Undertaking exceeds that of the previous year by a sum of £59,690, the higher cost of operation resulting from additional wages to employees and largely increased cost of stores, fuel, cables, rates, etc., has almost absorbed the greater revenue earned. The gross profit on operation carried to Net Revenue Account (£388,568) compares with that earned during the previous year (£381,168).

The percentage of Working Expenses to Revenue is 56.6 per cent, and the gross profit per train mile 7.267 pence for the year ended 30th June, 1918, as compared with 54.8 per cent., and 7.363 pence respectively for the period ended 30th June, 1917.

Interest earned upon the "Tramway Fund" at 4½ per cent. has been credited to the Net Revenue Account, and this account has been debited with the following items, viz.:—

Interest at 5 per cent. upon the Compensation (subject to Appeal) awarded the M.T. & O. Co. Ltd.	£16,750
Transfer to Renewals Reserve Account (increasing it to £55,000)	£30,000

The Balance at credit of Net Revenue Account, transferred to Appropriation Account, is therefore £360,207, compared with £340,020 for the year ended 30th June, 1917.

A further sum of £100,000 has been credited to Reconstruction Reserve Account (increasing it to £200,000), and the total credit to Appropriation Account at 30th June, 1918, is £500,227.

The "Tramway Fund" at the State Savings Bank at 30th June, 1918, was £755,863, and from this Fund the compensation finally awarded the Melbourne Tramway and Omnibus Co. Ltd. with accrued interest will be paid. The Renewals Reserve and Reconstruction Reserve Accounts, £55,000 and £200,000 respectively, form portion of the "Tramway Fund."

CONGESTION OF TRAFFIC.

In our last report we referred to the increasing difficulty of operating the cars through the congested traffic at certain street intersections in Elizabeth and Swanston Streets at the busiest portions of the day, especially between 5 and 6 p.m. The Collins Street and Swanston Street tramways each carry four separate lines of cars, and no less than 424 cars per hour now enter the intersection of those streets at the Melbourne Town Hall, compared with a total of 388 last year.

The numerous Public demonstrations connected with Patriotic movements and the frequent welcomes to Returned Soldiers (with which the Board is in

entire sympathy) not only seriously interfere with the tramway services, but also frequently necessitates a total cessation of traffic in some of the principal streets.

To illustrate the importance of the cable tramway traffic, a statement prepared from the Annual Report of the Victorian Railways for the year ended 30th June, 1917, shows that the Suburban Railways operating within the area served by the cable tramways carried approximately 33 million passengers compared with 103 million passengers upon the Board's cars during the same period.

WIRE ROPES.

The importance of maintaining a supply of wire ropes has always been recognised by the Board, large orders being cabled in May, 1916. All supplies require the approval of the Munitions Departments in Melbourne and England, and licenses must be obtained for both manufacture and shipment. The British Government has given our orders next preference to the needs of the Army and Navy, which rightly come first, and the Board desires to gratefully acknowledge its generous treatment. Owing to the War there has been great delay in the execution of orders; some of the ropes which were ordered eighteen months ago are not yet to hand, and others have been lost at sea en route to Australia. Under these circumstances it is necessary to keep the ropes in use as long as possible; this has led to frequent interruptions to traffic, and it is feared the Board may yet be compelled to discontinue some of the services.

BUILDINGS.

Many of the Car Houses require extension in order to house the increasing number of cars and to give better accommodation for the employees. With this object, a property adjoining the southern boundary of the Acland Street, St. Kilda Car House was purchased. A substantial extension to this Car House and men's rooms is in progress. Similar improvements have been made to the Victoria Street Richmond Car House on the western side, and a contract has been let for additions to the Rathdown Street North Carlton Car House. Extensions and improvements to other buildings are receiving attention.

A brick Waiting Room, Conveniences and Shop is in course of completion near the terminus of the Richmond tramway, and a modern Signal box has been erected at the intersection of Collins and Swanston Streets.

ADDITIONAL POWER AT RICHMOND POWER HOUSE.

In order to provide additional power at the Richmond Power House, the engines are to be transferred from the Rathdown Street North Carlton Power House to Richmond, and two 125 K. W. Electric Motors will be installed at the former station to propel the cables. A contract has been entered into for the supply of the motors, which are to be manufactured locally. It is hoped that both stations will be reconstructed by January next.

IMPROVED LIGHTING OF ROLLING STOCK AND BUILDINGS.

After a careful investigation into a number of systems of Car Lighting, a contract with the Australian General Electric Co. was entered into on 19th October, 1917, for the installation of Electric Light in the cars by means

of Edison Storage Batteries, which has been successfully adopted upon the cable tramways in San Francisco. Each car and dummy will be equipped with a battery to be charged from Motor Generators at the Car Houses. Owing, however, to War conditions, the work has been greatly delayed, but a considerable portion of the material has now been landed and it is hoped that the rolling stock upon at least one line will be electrically lighted by October, and that the other lines will be finished without much further delay.

The lighting of the various Car and Power Houses and Car Repair Shops being defective, the Board decided to improve it by equipping the whole of the 27 stations with electric light. The work is being rapidly pushed ahead, one-half of the buildings being completed.

FUEL RESERVES.

During the year the Board decided to purchase a small property in Abbotsford Street, North Melbourne, adjoining the Power Station, for storing fuel. Adequate reserves are now available at each Power House.

ROLLING STOCK.

At 30th June, 1917, the number of cars and dummies in stock was 1,026. During the year 25 dummies and 13 closed cars were built at the Car Repair Shop and a further 25 dummies are in various stages of construction. Four of the old 12-foot horse cars, which were of little value to the Board, are being converted into two bogie cars for use upon the Brunswick line.

The Rolling Stock in traffic on 30th June, 1918, was as follows:—

Standard Closed Cars	485
Bogie Cars	56
Open Cars	2
Small Cars	4
Horse Cars	2
Dummies	515
				<u>1,064</u>

ROYAL PARK HORSE TRAMWAY.

The lease of the Royal Park Horse Tramway from the Zoological and Acclimatisation Society will expire on 31st December, 1918. Negotiations are in progress for a renewal of the lease. The question of replacing horse traction by electrical or petrol motive power has for some time engaged the Board's attention.

ENLISTMENT FOR SERVICE ABROAD.

The number of employees who have, since the outbreak of war, enlisted for Active Service Abroad has now reached 327. It is with regret that the Board records an increasing list of casualties. A list is appended showing the names, rank and military unit of employees who have enlisted, those who have unfortunately fallen in defence of the Empire, and of those who have obtained Awards for Valour.

During the year, 24 former employees have received their discharges from military service and have re-entered the Board's employ. In addition, 82 returned soldiers not previously engaged upon the tramways have been found positions upon the staff.

CONCESSIONS TO RETURNED SOLDIERS.

On 1st March, 1918, the Board instituted special Concession Tickets which are sold at one penny each to returned soldiers receiving treatment in military hospitals. These tickets entitle the holders to travel on any section or route for which the ordinary fare is two pence.

Since 25th June the Board has issued tickets to returned soldiers or sailors on furlough free of charge.

In order to convenience Returned Soldiers and their dependents who have business at the new Repatriation Offices at Jolimont, the Board decided to extend the terminus of the Flinders Street City Section from Spring Street to Jolimont Road, East Melbourne.

EMPLOYEES.

The number of employees upon the staff at 30th June, 1918, was 2,275, being an increase of 91 compared with the previous year. The increase is mainly in the traffic staff, necessitated by the extra train mileage run during the year.

At the request of the Australian Tramway Employees' Association, the Agreement between the Board and the Association, which will expire on 2nd December, 1918, was on 13th June, 1918, amended in several directions, the most important of which is the abolition of a bonus which varied with the cost of living. This bonus has now been incorporated in the rate of wages.

THE COMPANY'S CLAIM AGAINST THE BOARD.

The claim by the Melbourne Tramway and Omnibus Co. Ltd. for compensation for assets acquired by the Board amounting to £442,254 17s. 6d. was heard before His Honor Mr. Justice Cussen, as Arbitrator, who awarded a sum of £335,000. Believing that the basis of compensation adopted by the Arbitrator was erroneous, certain law points were at the instance of the Board submitted to the Full Court, which referred the award back for further consideration. The Company has obtained leave to appeal to the King in Council against the Full Court's decision, and it is anticipated that the Appeal will be heard in November next.

THE BOARD'S CLAIM AGAINST THE COMPANY.

The Board's action against the Company for breach of the covenants of its Lease of the tramways from the Melbourne Tramways Trust was initiated by writ against the Company on 27th November, 1916. Trial of the issues has been delayed owing to the time necessarily occupied in preparing detailed replies to the Company's various requisitions. The final instalment of these particulars was delivered to the Company on 25th March, 1918, since which date the Board has been awaiting the Company's defence. The Board's claim totals £565,182.

At the request of the Board, the Directors of the Company met the members of the Board in conference on 13th July, 1917, to ascertain if there was any possibility of reaching a settlement of one or both of the claims without further recourse to the Court. The conference was adjourned until a date to be suggested by the Company.

GENERAL MANAGER'S REPORT.

The General Manager's Report for the year ended 30th June, 1918, is appended hereto.

GENERAL.

Permission was granted to the Melbourne, Brunswick & Coburg Tramways Trust to extend its tramway southward to a point abreast of the northern terminus of the Board's Madeline Street tramway. The extension will prove an undoubted convenience to passengers upon both the cable and electric tramways.

During the year the Board voted a sum of £1,000 to the Victorian Division of the Australian Branch of the British Red Cross Society.

The rating of the Cable Tramway undertaking by the Municipalities had not for many years been dealt with upon a correct basis. The Board therefore thoroughly investigated the matter and submitted a comprehensive scheme which was adopted by a conference of representatives of each of the Councils concerned. The aggregate Municipal rating of the undertaking for the year ended 30th September, 1918, amounted to £23,586, as compared with £16,620 for the previous year.

A description of the undertaking, list of sections and passenger fares, schedule of the lengths of each of the routes, and particulars of the Freehold and Leasehold property were shown as Appendices to the Report for the year ended 30th June, 1917.

The Board desires to express its appreciation of the loyal and efficient services rendered by the General Manager, Departmental Heads, and employees generally.

Yours faithfully,

COLIN TEMPLETON, *Chairman.*

D. V. HENNESSY,

HENRY WEEDON,

FRED. T. HICKFORD,

ALEX. RENFREW,

W. O. STRANGWARD, *Secretary.*

Members.

Melbourne, 1st July, 1918.

APPENDICES.

No. 1.—General Manager's Report.

No. 2.—Statistical Information.

No. 3.—Balance Sheet at 30th June, 1918.

No. 4.—Revenue Account, year ended 30th June, 1918.

No. 5.—Net Revenue and Appropriation Accounts at 30th June, 1918, and Report from Auditor General.

Roll of Honour.

Graphic Charts showing Four-Weekly Revenue, Passengers Carried, and Train Mileage for the three years ended 30th June, 1916 to 1918.

GENERAL MANAGER'S REPORT

The Chairman and Members,
Tramway Board,
Melbourne.

Gentlemen,

I have to report upon the operation of the Tramways for the year ended 30th June, 1918, as follows:—

TRAFFIC OPERATIONS.

The Traffic Statistics (detailed elsewhere in the Report) show a very marked increase in Passengers carried and in Receipts from Passenger fares.

The revision and rearrangement of stopping places in the City and Suburbs referred to in my last report have been completed, and have added to the Public convenience.

In order to enable the Suburban services to be maintained during interruptions to traffic in the City caused by street processions, etc., shunts have been installed at the intersection of Russell and Lonsdale Streets and at Gisborne Street, Melbourne, and have already proved a great convenience. Improved terminal Car House shunts are also in progress.

In consequence of the difficulty of obtaining new ropes on account of War demands, the lives of those in use have been extended by devoting the utmost care and attention to their maintenance, and the consumption of ropes has consequently been reduced to a minimum. If ropes on order are received in any reasonable time, the service will be maintained.

BUILDINGS, ROLLING STOCK AND CAR REPAIR SHOPS.

Extensive additions and improvements to several of the Car Houses have been put in hand and others will be dealt with during the current year.

The Manager of the Car Repair Shops reports that the cars have been maintained in good running condition during the year under review, and the number has been increased by 25 dummies and 13 closed cars, with more under construction.

Large Iron Planing and Radial Drilling machines have been obtained for use at the Repair Shop and will expedite work. A second-hand 40 H.P. Tilling-Stevens Motor Lorry has been purchased, and the electric generator will also be used to produce electricity for welding in connection with track repairs.

GENERAL.

A regrettable fatal street accident which recently occurred at the terminus of the Victoria Street tramway directed attention to the congestion of traffic in the vicinity of the Victoria Street Bridge. Several conferences of representatives of the Councils and of the Cable and Electric tramways have been held, and the Board has approved of a joint scheme for widening the roadway and re-adjusting the tramway tracks. The regulation of the traffic at busy hours during the past few months by a constable specially appointed to that duty has effected a great improvement.

The Annual Stock-taking shows a large increase in fuel, timber, stores, etc. This is caused by the larger supplies held against contingencies and by the fact that the cost price of all material has greatly enhanced. All stock is in good condition.

The Traffic and Clerical Staff have as usual performed their duties satisfactorily, and the various Departmental Heads have administered the several branches of the service in a manner specially deserving of commendation.

Yours faithfully,

H. A. WILCOX,
General Manager.

1st July, 1918.

STATISTICAL INFORMATION.

The following is a summary of Statistical Information of the operation of the tramways for the year ended 30th June, 1918:—

Total Borrowing Powers	£500,000
Borrowing Powers Exercised	Nil
Gross Capital Expenditure by—	
Melbourne Tramways Trust	£1,660,736
Tramway Board	330,984
	£1,991,720
Mileage of Double Track, Cable	43.677 miles
Do. do. Horse625 „
	44.302 miles
Average Population served by Tramways	450,000
Traffic Receipts	£901,474
Total Receipts	£903,020
Working Expenses	£511,365
Transfer to Renewals Reserve Account for year	£30,000
„ Reconstruction Reserve Account for year	£100,000
Net Surplus for year	£260,207
Train Miles, Cable	12,822,147
„ „ Horse	10,882
	12,833,029
Passengers carried	118,084,157
Average maximum number of Trains in use daily	417
Percentage of Working Expenses to Total Receipts	56.63
Average Traffic Receipts per Train Mile	16.859d.
„ „ per Mile of Double Track	£20,348
„ „ per Passenger	1.914d.
„ Total Receipts per Train Mile	16.888d.
„ Speed per hour, including stops	9 miles
„ Working Expenses per Train Mile, excluding Power Cost	7.634d.
„ „ „ including Power Cost	9.563d.
Scale of Fares	1d., 1½d., 2d., 3d.
Average Distance per 1d.	1.628 miles
„ Number of Passengers per Train Mile	8.80
„ Journeys per head of Population per annum	251
Number of Cars in Stock	549
„ Dummies in Stock	515

TRAMWAY BOARD.

Appendix No. 3.

BALANCE SHEET at 30th June, 1918.

CAPITAL AND LIABILITIES.		ASSETS.	
MELBOURNE TRAMWAYS TRUST'S EXPENDITURE upon Cable Tramway undertaking vested in Board pursuant to Act No. 2818 (see contra)	£1,660,736 0 0	MELBOURNE TRAMWAYS TRUST'S EXPENDITURE UPON CABLE TRAMWAYS (see contra)—	
*Outstanding Accounts	23,094 10 2	Permanent Way, &c.	£1,121,753 0 0
Bills Payable	3,123 17 6	Power Houses, Land, Engines, &c.	456,534 0 0
Contractors' and Employees' Security Deposits	7,627 12 0	Engineering and General Expenditure	82,449 0 0
Melbourne Tramways Trust—Unpresented Coupons	54 0 0	<hr/>	£1,660,736 0 0
Melbourne Tramway & Omnibus Company Limited—Amount awarded by Arbitrator for Assets acquired pursuant to Act No. 2818 (Subject to appeal)	£335,000 0 0	ASSETS ACQUIRED FROM MELBOURNE TRAMWAY & OMNIBUS COMPANY LIMITED (PORTION), PURSUANT TO ACT No. 2818—	
Two years' interest thereon	33,500 0 0	Freehold Properties—Head Office, Repair Shops, Car Houses, and other Properties	£151,498 8 0
Power House Repairs Suspense Account	368,500 0 0	Royal Park Tramway and other Leaseholds	5,246 3 7
Renewals Reserve Account	3,918 13 2	Rolling Stock, Grips, &c.	169,228 2 9
Reconstruction Reserve Account	55,000 0 0	Sundry Machinery at Power Houses	1,729 7 7
Commercial Bank of Australia, Melbourne	200,000 0 0	Iron and Wood Working Machinery at Car Repair Shops	6,993 4 10
Balance of Appropriation Account	7,941 6 4	Engines, Boilers, Shafting, &c., at Car Repair Shops	1,696 16 10
	500,227 3 0	Patterns at Car Repair Shops	2,565 15 6
		<hr/>	
		At Prices claimed by Company	£338,957 19 1
		Less—Reduction made by Arbitrator	87,004 15 1
		<hr/>	251,953 4 0
		Other Freehold and Leasehold Property and Shelter Houses, at cost	7,142 1 4
		Rolling Stock constructed by Board, at cost	13,953 3 11
		Auxiliary Engine and Repair Shops Machinery, at cost	2,103 11 8
		Sundry Debtors, Insurance Premiums and Municipal Rates, &c., paid in advance	11,515 16 4
		Horses, Rails, Cables, Furniture and Fittings, Bell Punches, &c., at valuation	54,384 10 11
		Stocks of Timber, Stores, Fuel, Uniforms, &c., at valuation	65,465 14 3
		New Shunts and Alterations to Track	1,447 10 5
		Contractors' Fixed Deposits	610 0 0
		"Tramway Fund" at State Savings Bank	755,862 10 8
		Cash in hand	5,048 18 8
		<hr/>	£2,830,223 2 2
	<hr/>		
	£2,830,223 2 2		

*Exclusive of Liabilities on Contracts not yet executed.

£2,830,223 2 2

"Tramway Fund" at State Savings Bank	755,862 10 8
Cash in hand	5,048 18 8
	<u>£2,830,223 2 2</u>

TRAMWAY BOARD.

Appendix No. 4.

REVENUE ACCOUNT from 1st July, 1917, to 30th June, 1918.

EXPENDITURE.				REVENUE.					
	Per Train Mile.	£	s.	d.		Per Train Mile.	£	s.	d.
To Traffic Expenses —					By Traffic Receipts	16.859d.	901,473	14	3
Wages and Salaries, Lighting Cars, Uniforms, &c.	5.781d.	309,103	16	10	Advertisements and Rents029d.	1,546	11	6
„ Maintenance —									
Buildings, Rolling Stock, Permanent Way, &c.	.830d.	44,369	11	11					
„ Power Expenses —									
Wages and Salaries, Ropes, Fuel, Water, &c.	1.929d.	103,183	9	3					
„ Rates, Land Tax, and Car Licenses470d.	25,127	3	9					
„ General Expenses —									
Management, Accident Compensation, Insurances, Printing, and Miscellaneous553d.	29,581	4	3					
	<u>9.563d.</u>	<u>511,365</u>	<u>6</u>	<u>0</u>					
„ Contributions to Employees' Benefit Society039d.	2,087	8	0					
„ " to Australian Red Cross Society019d.	1,000	0	0					
	<u>9.621d.</u>	<u>514,452</u>	<u>14</u>	<u>0</u>					
„ Balance to Net Revenue Account	7.267d.	388,567	11	9					
	<u>16.888d.</u>	<u>£903,020</u>	<u>5</u>	<u>9</u>		<u>16.888d.</u>	<u>£903,020</u>	<u>5</u>	<u>9</u>

TRAMWAY BOARD.

Appendix No. 5.

NET REVENUE ACCOUNT, year ended 30th June, 1918.

	£	s.	d.		£	s.	d.
To Legal and Engineering Costs re Arbitration with, and Claim against, Melbourne Tramway & Omnibus Company Limited	5,431	2	10	By Balance from Revenue Account	388,567	11	9
„ One Year's Interest at 5% on £335,000, Compensation awarded the Melbourne Tramway & Omnibus Company Limited by Arbitrator (subject to appeal)	16,750	0	0	„ Interest at 4½% on "Tramway Fund" at State Savings Bank	23,820	17	8
„ Transfer to Renewals Reserve Account	30,000	0	0				
„ Balance to Appropriation Account	360,207	6	7				
	£412,388	9	5		£412,388	9	5

APPROPRIATION ACCOUNT at 30th June, 1918.

	£	s.	d.		£	s.	d.
To Transfer to Reconstruction Reserve Account	100,000	0	0	By Balance from previous year	240,019	16	5
„ Balance	500,227	3	0	„ Balance from Net Revenue Account	360,207	6	7
	£600,227	3	0		£600,227	3	0

H. A. WILCOX, *General Manager.*
W. O. STRANGWARD, *Secretary.*

COLIN TEMPLETON, *Chairman.*
D. V. HENNESSY,
HENRY WEEDON,
FRED. T. HICKFORD, } *Members.*
ALEX. RENFREW,

MELBOURNE, 12th August, 1918.

REPORT BY AUDITOR GENERAL.

I certify that I have examined the Accounts and Balance Sheet of the Tramway Board for the year ended 30th June, 1918, and have found them correct. The valuations of the assets acquired from the Melbourne Tramway and Omnibus Company Limited have been accepted on the basis of the Arbitrator's Award. The tramway undertaking constructed by the Melbourne Tramways Trust is shown at the original cost price. The valuation of the stocks on hand is accepted on the certificate of the General Manager. I have duly examined all the titles and securities held by the Board.

27th Aug., 1918.

F. H. BRUFORD,
Auditor General.

ANDERSON, ANQUETIL, BAINES, C. BLAIR, A. BLONDELL, BRUCE, L. CAMERON, CAMPBELL, CHARMAN, COCHRAN, COLLINS, COTTRELL, COUGHER, CURRIE, DANES, W. ELLIOTT, FLEMING, FLETCHER, FLETT, R. G. FOTHERING, GARDINER, GARRETT, GOUDSMITH, GRAVELL, HAAR, CH. HALLIGAN, HEARD, A. HEGARTY, HINES, W. HITCHENS, HORDERN, HUGHES, JENKINS, LE BON, F. LINDLEY, LYDIARD, NAHON, T. MOORE, J. O'NEIL, W. O'SHEA, W. PEACH, F. PITCHER, REID, DAVY, SERONG, J. SIMS, JOHN. SOLNICK, SOMNER, I. WEBB, R. H.

Em

F. H. BRUFORD,
Auditor General.



Employees Enlisted for Active Service

to 30th June, 1918

OUR HONOURED DEAD

Died on Active Service (49)

NAME	OCCUPATION	MILITARY UNIT
ANDERSON, FREDERICK	Engine Oiler ..	31st Battalion Infantry
ANQUETIL, HENRY STEWART (Lieut.) ..	Engine Driver ..	2nd Machine Gun Section
BAINES, CHARLES VINCENT	Conductor ..	23rd Battalion Infantry
BLAIR, ARCHIBALD	Clerk ..	5th Field Artillery Brigade
BLONDETT, ALFRED JAMES (Corporal) ..	Gripman ..	22nd Battalion Infantry
BRUCE, LINDSAY CHARLES (Corporal) ..	Gripman ..	3rd Field Artillery Brigade
CAMERON, GORDON PETER	Conductor ..	7th Battalion Infantry
CAMPBELL, JAMES	Conductor ..	24th Battalion Infantry
CHARMAN, PERCIVAL E. F.	Gripman ..	2nd Field Artillery Brigade Ammunition Col.
COCHRANE, WILLIAM	Conductor ..	37th Battalion Infantry
COLLINS, ALLAN STANLEY	Conductor ..	5th Machine Gun Section
COTTREN, ARTHUR E. C.	Labourer ..	23rd Battalion Infantry
COUCHER, GEORGE FRED. (Sergeant) ..	Gripman ..	8th Battalion Infantry
CUBITT, ALBERT READ (Corporal) ..	Conductor ..	14th Battalion Infantry
DANES, WILLIAM GORDON	Conductor ..	59th Battalion Infantry
ELLIOTT, ARTHUR HENRY	Gripman ..	5th Battalion Infantry
FLEMING, NORMAN R. R.	Conductor ..	14th Battalion Infantry
FLEMING, ANDREW CUMMING	Conductor ..	21st Battalion Infantry
FLETCHER, WILLIAM HENRY	Conductor ..	10th Machine Gun Co.
FLETT, ROY NEVILLE	Conductor ..	21st Battalion Infantry
FOTHERGILL, JOHN DONALD	Gripman ..	6th Battalion Infantry
GARDINER, FREDERICK	Gripman ..	23rd Battalion Infantry
GARRETT, JOHN STEPHEN	Gripman ..	1st Light Horse Head Quarters
GOLDSMITH ROBERT	Tunnel Cleaner ..	59th Battalion Infantry
GRAVELL, WILLIAM EDWIN	Conductor ..	60th Battalion Infantry
HAAR, CHARLES HENRY (Lance-Corporal)	Gripman ..	22nd Battalion Infantry
HALLIGAN, WILLIAM ROBERT	Conductor ..	7th Battalion Infantry
HEARD, ARTHUR (Coy. Q. M. Sergt.) ..	Conductor ..	31st Battalion Infantry
HEGARTY, ALBERT (Corporal)	Gripman ..	23rd Battalion Infantry
HINES, WILLIAM GEORGE	Gripman ..	6th Battalion Infantry
HITCHENS, ALFRED REGINALD	Gripman ..	14th Battalion Infantry
HORDERN, ARNOLD CLEMENT	Track Oiler ..	7th Battalion Infantry
HUGHES, JOHN HUGH	Conductor ..	13th Battalion Infantry
JENKINS, ALBERT	Engine Oiler ..	31st Battalion Infantry
LE BON, ERNEST GEORGE (Sergeant) ..	Gripman ..	22nd Battalion Infantry
LINDLEY, WALTER	Gripman ..	57th Battalion Infantry
LYDIARD, WILLIAM JAMES	Painter ..	24th Battalion Infantry
MAHON, THOMAS	Conductor ..	Divisional Ammunition Column
MORE, ROBERT DAVID	Track Repairer ..	5th Battalion Infantry
NOLAN, WILLIAM	Gripman ..	14th Battalion Infantry
O'SHEA, WILLIAM	Mechanic ..	14th Battalion Infantry
PEACH, EPHRAIM FRANCIS (L. Corporal)	Gripman ..	29th Battalion Infantry
PITCHER, BASIL	Engine Oiler ..	5th Battalion Infantry
REID, DAVID JOHN	Tunnel Cleaner ..	13th Light Horse Regiment
SERONG, EMANUEL CHARLES	Tunnel Cleaner ..	59th Battalion Infantry
SIMS, JOHN E. THOMAS	Conductor ..	5th Battalion Infantry
SOLNICK, ERNEST	Engine Oiler ..	23rd Battalion Infantry
SUMNER, ROY G.	Engine Oiler ..	21st Machine Gun Co.
WEBB, RHYS	Conductor ..	14th Battalion Infantry

I have duly examined all the titles and securities held by the Board.

27th Aug., 1918.

ENLISTED FOR ACTIVE SERVICE (278)

NAME	OCCUPATION	MILITARY UNIT
ABURROW, FRANCIS	Gripman	Field Artillery
ADAIR, EDWARD GEORGE (Sergeant) ..	Conductor	5th Battalion Infantry
ADAMSON, MELVILLE SALISBURY ..	Gripman	4th Division Ammunition Column
AIRD, ALEXANDER ROBERT	Conductor	5th Battalion Infantry
*AIRD, WILLIAM ROBERT	Gripman	Infantry
AITKEN, JOHN CHARLES (Lieut.) (M.M.)	Gripman	7th Field Ambulance
ALLAN, JAMES YOUNG (Corporal) ..	Bodymaker	6th Battalion Infantry
ANDERSON, HENRY WILLIAM	Conductor	2nd Tropical Force
ANTHONY, HENRY THOMAS	Gripman	1st Australian Light Horse Regiment
ARNOLD, JAMES EDWIN (2nd Lieut.) ..	Gripman	6th Battalion Infantry
*ATTENBOROUGH, ALBERT	Gripman	Infantry
*AUSTIN, HERBERT EDWARD	Conductor	Infantry
*AYLWARD, THOMAS	Gripman	Infantry
*BAKER, WALTER HERMAN (Sapper) ..	Conductor	5th Division Signal Company
BALLARD, JOSEPH GEORGE	Gripman	Infantry
BANKS, JAMES BRUCE (Corporal) ..	Conductor	1st Squadron Flying Corps
*BARBOUR, FRANCIS JUNOR	Gripman	Infantry
BARBOUR, PERCY CLEMENT (Corporal) ..	Gripman	2nd Heavy Trench Mortar Battery
*BARNES, ERNEST V. S. (Lance-Corporal)	Conductor	1st Squadron Flying Corps
*BARTON, FRANK STUART	Conductor	13th Field Artillery Brigade
BATES, VALENTINE CHARLES	Gripman	46th Battalion Infantry
BAZLEY, FREDERICK	Engine Oiler	1st Salvage Section
BLISS, FREDERICK RODEN	Gripman	Australian Flying Corps
BIRMINGHAM, GEORGE	Shunter	21st Battalion Infantry
BONNICK, JAMES GORDON	Track Repairer	1st Aust. Light Railway Operating Company
BOOTHROYD, ALLAN FENTON	Conductor	23rd Battalion Infantry
BOWMAN, ROBERT LESLIE	Track Labourer	2nd Division Ammunition Column
*BOWMAN, WALTER ROBERT	Conductor	16th Field Artillery Brigade
BOWMAN, WILLIAM JOHN	Gripman	Australian Mounted Engineers
BOWMAN, DAVID	Engine Fitter	Infantry
BOX, WILLIAM LESLIE	Shed Mechanic	5th Battalion Infantry
BOXSHALL, ALBERT VICTOR (L-Corpl.)	Conductor	57th Battalion Infantry
*BOYD, WILLIAM ROBERT	Conductor	22nd Battalion Infantry
BRADEN, JAMES THOMPSON (L-Corpl.)	Gripman	14th Battalion Infantry
*BREARLEY, HERBERT	Conductor	Infantry
BREWER, VINCENT B. V.	Conductor	3rd Australian General Hospital
BRIGGS, HENRY DAVID (Bombardier) ..	Gripman	8th Field Artillery Brigade
BRIGGS, WILLIAM CHARLES	Gripman	3rd Pioneer Battalion
BRODIE, ANDREW CHEETHAM	Engine Oiler	7th Battalion Infantry
*BROWNE, ALFRED LAWRENCE	Gripman	Infantry
BRYDON, ALFRED JOHN	Gripman	Army Service Corps
BULEY, FREDERICK	Conductor	8th Battalion Infantry
BURNEY, WILLIAM THOMAS	Conductor	Divisional Train A.S.C.
BURROWS, JOHN H. J.	Gripman	1st Motor Transport Company
BUTTERS, ROBERT WILLIAM (Corporal)	Conductor	57th Battalion Infantry
CAIL, HERBERT GEORGE	Conductor	Convalescent Depot
CAMPBELL, CHARLES J. M. (Corporal) ..	Fireman	14th Battalion Infantry
CAMPBELL, CLEM	Engine Oiler	5th Field Bakery
*CAUSON, ERNEST ALFRED	Conductor	7th Battalion Infantry
CAVANAGH, JOHN NORMAN	Conductor	4th Pioneer Battalion
*CHURCH, GABRIEL	Conductor	Artillery
*CLARKE, CHARLES JAMES	Conductor	2nd Field Artillery Brigade Ammunition Col.
*CLARKE, THOMAS E. C.	Conductor	14th Field Artillery Brigade
*CLEMENTSON, HERBERT	Conductor	Army Medical Corps
COOPER, CHARLES H. G.	Conductor	22nd Battalion Infantry
*CORCORAN, BARNARD JOHN	Gripman	Infantry
CORRIE, ERNEST HENRY (Corporal) ..	Conductor	8th Light Horse Regiment
COTTREN, GEORGE J. D.	Engine Oiler	60th Battalion Infantry
COURTNEY, CHARLES EDGAR	Clerk	2nd Division Signallers Company
COUSINS, CYRIL W. V.	Gripman	2nd Division Ammunition Column
CRAIG, WILLIAM (Sergeant)	Conductor	A.I.F. Headquarters
CROUCH, HARRY JOHN (Sergeant) ..	Conductor	4th Division Ammunition Column
CUFF, RICHARD (Lieutenant)	Conductor	5th Battalion Infantry
CUGLEY, JAMES FREDERICK (C.Q.M.S.)	Conductor	22nd Battalion Infantry
CUNNINGHAM, MERVYN (Sergeant) ..	Conductor	60th Battalion Infantry
*CURRAN, DESMOND	Engine Driver	23rd Battalion Infantry
*DARGATZ, LEWIS T.	Conductor	6th Battalion Infantry
DAVEY, HENRY PEARCE (Corporal) ..	Labourer	21st Battalion Infantry
DAWSON, MICHAEL JOSEPH	Conductor	Infantry
*DEAN, RODGER HUNTER	Gripman	46th Battalion Infantry
DILNOT, ARTHUR HENRY	Conductor	1st and 2nd Australian Siege Battery
DOWNES, CLARENCE R.	Engine Oiler	23rd Battalion Infantry
DYER, ALBERT	Conductor	3rd Light Horse Ambulance
EASTMAN, JOHN CHARLES	Engine Oiler	46th Battalion Infantry
EDGAR, GEORGE SNEDDON	Painter	39th Battalion Infantry
EDWARDS, HERBERT L. O.	Conductor	Army Medical Corps Details

EICKE, I
 *EKLUND
 *ELLIOT
 *EWART
 EWERT,
 FALVEY
 FARREL
 FIELD, E
 *FISHER
 FITZPAT
 FLAHER
 PLANAG
 FLEMING
 *FOX, E
 FRASER,
 FRASER,
 FRASER,
 *GARDIN
 GARLAN
 *GEDDES
 GEDDIS,
 GEORGE,
 GIBBONS
 GIBBS, W
 GLEESON
 GOODALL
 GOODWIN
 GORDON,
 GRAHAM
 GRAVE, J
 GREAVES
 HARVEY,
 HAILES,
 HAMILTON
 *HANKS,
 *HARRIS
 HARTRIC
 HAWLEY
 *HEADLA
 HIGHAM,
 HITCHIN
 HOGG, A
 HOLLAND
 HOLLOW
 HOLMES,
 HOLTON,
 Hooper, J
 *HOUSTO
 *HOUSTO
 HOWE, V
 HUGHES,
 HUNTER,
 JACKSON
 *JENKINS
 *JENKINS
 JENKINS,
 *JONES, I
 JONES, E
 JONES, A
 JORDAN,
 KAVANAG
 KIERNAN
 KINGSTO
 *KNIGHT
 LAIDLAW
 LAKE, H
 LAMBE, J
 *LAMONT
 LANGLEY
 LAWREN
 *LAWTHE
 LAZARUS
 *LEPLAS
 LINTON,
 LOGAN, J
 *LONERG
 LONG, GE
 LONG, MA
 LUND, CA
 LYNCH, I
 LYONS, W
 MADIGAN

ENLISTED FOR ACTIVE SERVICE—Continued

NAME	OCCUPATION	MILITARY UNIT
EICKE, LANCELOT R. T.	Gripman	8th Battalion Infantry
*EKLUND, HENRY	Conductor	7th Battalion Infantry
*ELLIOTT, WILLIAM LAWRENCE	Conductor	Infantry
*EWART, ARTHUR	Gripman	58th Battalion Infantry
EWERT, WILLIAM A.	Gripman	Infantry
FALVEY, LESLIE CLARENCE	Conductor	6th Field Ambulance
FARRELL, JOHN CLYDE	Conductor	4th Field Artillery Brigade
FIELD, LESLIE GORDON	Gripman	21st Battalion Infantry
*FISHER, SAMUEL	Gripman	8th Battalion Infantry
FITZPATRICK, JOSEPH (M.M.) (Sergeant)	Labourer	31st Battalion Infantry
FLAHERTY, WILLIAM NICHOL	Conductor	8th Battalion Infantry
FLANAGAN, ANDREW ROWAN	Conductor	59th Battalion Infantry
FLEMING, ALBT. H. P. (M.C.) (Warrant Off.)	Gripman	5th Battalion Infantry
*FOX, ERIC JAMES	Conductor	Infantry
FRASER, DONALD	Gripman	21st Battalion Infantry
FRASER, ERNEST W. E.	Conductor	21st Battalion Infantry
FRASER, JAMES (Sergeant)	Conductor	8th Battalion Infantry
*GARDINER, RICHARD ADOLPHUS	Conductor	Infantry
GARLAND, ALFRED WILLIS (Lieutenant)	Fireman	31st Battalion Infantry
*GEDDES, LESLIE S.	Gripman	Infantry
GEDDIS, JOHN	Conductor	Infantry
GEORGE, HERBERT THOS.	Engine Oiler	Infantry
GIBBONS, JOHN JOSEPH	Conductor	46th Battalion Infantry
GIBBS, WALTER THOMAS	Conductor	4th Division Train Details
GLEESON, HENRY FREDERICK	Conductor	2nd Division Artillery Details
GOODALL, JOHN R.	Shed Mechanic	4th Division Ammunition Column
GOODWIN, EDGAR CHARLES	Gripman	2nd Field Artillery Brigade
GORDON, HENRY	Shunter	2nd Battalion Infantry
GRAHAM, JAMES H. (Sergeant)	Gripman	57th Battalion Infantry
GRAVE, JOHN CEDRIC	Engine Oiler	45th Battalion Infantry
GRAVES, ERNEST	Conductor	23rd Battalion Infantry
HARVEY, EDWIN NORMAN	Conductor	Infantry
HAILES, FRANK VALENTINE	Conductor	19th Field Artillery Brigade
HAMILTON, NORMAN ROSS	Gripman	3rd Division Ammunition Corps
*HANKS, WALTER EDWARD	Conductor	21st Battalion Infantry
*HARRISON, GEORGE WRIGHT	Conductor	1st and 2nd Australian Siege Battery
HARRICK, WILLIAM (Lance-Corporal)	Conductor	6th Battalion Infantry
HAWLEY, JOHN CHARLES (Lance-Corpl.)	Gripman	3rd Light Horse Field Ambulance
*HEADLAM, CHARLES G. J.	Gripman	2nd Field Ambulance
HIGHAM, NOEL BRUNT	Conductor	1st Squadron Flying Corps
HITCHINS, FREDERICK JOHN	Conductor	46th Battalion Australian Infantry B.E.F.
HOGG, ARTHUR EDWARD	Conductor	2nd Division Signalling Company
HOLLAND, JOHN ALBERT	Gripman	Infantry
HOLLOW, ARTHUR OSCAR	Gripman	21st Battalion Infantry
HOLMES, WILLIAM WYBERT	Gripman	1st Company Australian Army Service Corps
HOLTON, JOSEPH H. O.	Conductor	4th Australian Motor Transport Company
Hooper, John Henry	Engine Oiler	22nd Battalion Infantry
*HOUSTON, ALEXANDER (2nd Lieutenant)	Gripman	5th Battalion Infantry
*HOUSTON, FREDERICK	Gripman	3rd Light Horse
HOWE, VICTOR SIMEON (Lance-Corporal)	Conductor	24th Battalion Infantry
HUGHES, JOHN ANTHONY	Engine Oiler	24th Battalion Infantry
HUGHES, THOMAS LLOYD	Conductor	8th Battalion Infantry
HUNTER, ARTHUR GEORGE	Conductor	21st Battalion Infantry
JACKSON, ANDREW WILLIAM	Conductor	4th Light Horse
*JENKINS, DUGALD (Lance-Corporal)	Gripman	5th Battalion Infantry
*JENKINS, ROBERT GEORGE	Gripman	24th Battalion Infantry
JENKINS, WALTER HERBERT	Conductor	8th Battalion Infantry
*JONES, ERNEST (Lance-Sergeant)	Gripman	24th Battalion Infantry
JONES, ERNEST EDWARD (Sergt.) (M.M.)	Conductor	8th Battalion Infantry
JONES, ARTHUR JOSEPH VAL.	Conductor	Field Company Engineers
JORDAN, THOMAS	Engine Driver	Army Medical Corps Details
KAVANAGH, GERALD	Engine Driver	7th Field Ambulance
KIERNAN, PAT. JOHN (M.M.) (Bombdr.)	Gripman	2nd Field Artillery Brigade
KINGSTON, WILLIAM (Sergeant)	Labourer	Army Service Corps
*KNIGHT, ARTHUR ROBERT	Gripman	Infantry
LAIDLAW, ARTHUR WILLIAM	Shunter	24th Battalion Infantry
LAKE, HUGH GEORGE	Conductor	8th Battalion Infantry
LAMBE, JOHN HORACE (Sergeant)	Conductor	60th Battalion Infantry
*LAMONT, THOMAS	Gripman	3rd Division Ammunition Column
LANGLEY, ERNEST CHARLES	Conductor	23rd Battalion Infantry
LAWRENCE, PERCY CAMPBELL	Gripman	Instructional Staff
*LAWTHER, WILLIAM	Conductor	Infantry
LAZARUS, ARTHUR G.	Engine Oiler	4th Light Trench Mortar Battery
*LEPLASTRIER, STANLEY VERNEY	Painter	1st Australian General Hospital
LINTON, WILLIAM JOHN	Gripman	2nd Division Signalling Company
LOGAN, JAMES	Clerk	60th Battalion Infantry
*LONERGAN, CORNELIUS BERNARD	Machinist	5th Field Company Engineers
LONG, GEORGE WILLIAM	Shed Mechanic	7th Battalion Infantry
LONG, MATTHEW LEONARD (2nd Lieut.)	Conductor	37th Battalion Infantry
LUND, CARL EDWARD	Gripman	Motor Transport Service
LYNCH, DAN. T. E. (M.M.)	Gripman	12th Field Artillery Brigade
LYONS, WALTER RIGBY	Shed Mechanic	4th Field Artillery Brigade
MADIGAN, CECIL THORNTON	Conductor	1st Australian General Hospital

ENLISTED FOR ACTIVE SERVICE—Continued

NAME	OCCUPATION	MILITARY UNIT
MAHER, THOMAS	Conductor	7th Battalion Infantry
MAJOR, HERBERT HENRY	Shed Mechanic	Artillery
*MALONE, JOSEPH	Gripman	58th Battalion Infantry
MANLEY, HENRY WALTER	Conductor	Royal Field Artillery, Salonika
MASON, GEORGE HERBERT	Gripman	59th Battalion Infantry
MATTHEWS, GEORGE HAROLD (Corporal)	Body Maker	1st Field Ambulance
*MEADS, JAMES	Conductor	21st Battalion Infantry
MEIKLE, WM. BRUCE (M.M.) (S.Q.M. Sgt.)	Shunter	1st Division Train Headquarters
MILLER, DONALD ALEXANDER (L./Cpl.)	Conductor	24th Battalion Infantry
MILLETT, WILLIAM	Labourer	2nd Pioneer Battalion
*MITCHELL, FREDERICK GEO. (L./Cpl.)	Conductor	6th Battalion Infantry
MOLLISON, EDWARD STANLEY	Conductor	Australian Flying Corps
MORPHETT, CHAS. ANDREW (Sergeant)	Conductor	2nd Veterinary Section
MORRIS, HENRY VINCENT	Conductor	7th Battalion Infantry
MORRIS, ROBERT PATRICK	Conductor	Australian Flying Corps
MORRISON, WILLIAM HENRY	Conductor	21st Battalion Infantry
MUTIMER, JOHN	Track Repairer	10th Field Company Engineers
McBEAN, HUGH	Gripman	3rd Division Ammunition Company
*McCONNOCHIE, LESLIE JAMES	Conductor	7th Battalion Infantry
McINNES, JOHN THOMAS	Shunter	Dental Details
*McLACHLAN, JAMES (2nd Lieut.) (D.C.M.)	Engine Oiler	38th Battalion Infantry
McLEAN, JOHN L.	Track Repairer	1st Field Artillery Brigade
NEATE, ALFRED BENJAMIN	Conductor	Army Medical Corps Details
NICHOLAS, GEO. MURRAY	Gripman	Australian Flying Corps
NICHOLLS, SAMUEL	Gripman	46th Battalion Infantry
NOBLE, WILLIAM CHARLES	Engine Oiler	Infantry
NOWELL, HENRY GEORGE	Conductor	60th Battalion Infantry
*ONIANS, STANLEY R.	Conductor	Light Horse
O'SULLIVAN, EDWARD	Engine Oiler	Infantry
*OHLFF, RICHARD	Conductor	Infantry
*OLSSON, FREDERICK NEIL	Conductor	3rd Division Ammunition Column
*OWEN, CHARLES	Engine Oiler	23rd Battalion Infantry
PAGE, ALFRED GEORGE	Gripman	24th Battalion Infantry
PAGE, FRANK D. A.	Conductor	60th Battalion Infantry
PARKER, FRANK NICHOLSON	Shed Mechanic	3rd Machine Gun Company
*PARKER, WALTER GEORGE (Corporal)	Conductor	24th Battalion Infantry
PATTLE, LESLIE JOHN	Conductor	1st Wireless Corps
PEPPER, FREDERICK STANLEY (Corpl.)	Conductor	2nd Pioneer Battalion
*PERMEWAN, RICHARD H. T.	Conductor	39th Battalion Infantry
*PHILLIPS, GEORGE	Clerk	39th Battalion Infantry
PILMER, JAMES RICHARD (Lance-Corpl.)	Shed Mechanic	14th Battalion Infantry
*PLOUGHWRIGHT, CHAS. AUBREY	Conductor	14th Battalion Infantry
POLDEN, LEONARD CECIL	Gripman	2nd Field Company Engineers
*POULTER, PERCY (Cross of St. George)	Conductor	6th Battalion Infantry
PRITCHARD, PERCY DOWDALL (Corporal)	Conductor	5th Battalion Infantry
*PROUT, ALICK LESLIE (Corporal)	Conductor	58th Battalion Infantry
PURKISS, WILLIAM WESLEY (Corporal)	Gripman	21st Battalion Infantry
REDDAN, JOSEPH JAMES	Gripman	Field Artillery
REED, EDGAR	Gripman	Infantry
*REES, CHARLES ERNEST	Gripman	1st Light Horse Ambulance
*REID, THOMAS	Conductor	24th Battalion Infantry
*RICE, WALTER	Driver	Division Ammunition Column
RICHARDSON, ERIC C.	Clerk	1st Division Ammunition Column
ROGERS, CLARENCE BADEN RUPERT	Engine Oiler	Infantry
ROTHWELL, ROLAND	Gripman	Australian Field Artillery
*ROUSE, LESLIE HUTCHINSON	Gripman	3rd Pioneer Battalion
*ROWAN, ALBERT PAT.	Conductor	Army Medical Corps
RUSHTON, RAYMOND VICTOR	Engine Oiler	Army Medical Corps
RUSSELL, VICTOR ALBERT	Machinist	Instructional Staff
RYAN, JAMES EDWARD	Conductor	12th Brigade Ammunition Column
SANDERSON, WILLIAM H. (Corporal)	Conductor	4th Mobile Veterinary Section
SAVAGE, JOHN CLARENCE	Conductor	21st Battalion Infantry
SCOTT, SIDNEY	Conductor	Field Artillery
*SELLARS, HORACE M.	Conductor	Infantry
*SHARPE, JAMES W.	Conductor	Infantry
*SHARE, JOHN	Gripman	5th Battalion Infantry
SHEEAN, LEONARD SAUNDERS	Conductor	37th Battalion Headquarters
SHELDRAKE, CHARLES EDWARD	Gripman	2nd Field Artillery Brigade
SHEPHERD, THOMAS HENRY (Sergeant)	Gripman	5th Battalion Infantry
SKELTON, FRANK LAWSON	Shed Mechanic	Field Artillery
SIMMONS, JOSEPH J.	Fireman	4th Field Artillery Brigade
SIMPSON, JOHN THOMAS	Conductor	4th Field Artillery Brigade
SLATTER, WILLIAM THOMAS	Conductor	38th Battalion Infantry
SLOLEY, HUBERT	Conductor	Provost Corps
SMITH, CHARLES HOLDSWORTH	Conductor	4th Light Horse Regiment
SMITH, DONALD SAMUEL	Conductor	1st Pioneer Battalion
SORRENSEN, THOMAS	Mechanic	Australian Navy
SPENCE, HUGH G. C. (Coy. Q.M. Sergt.)	Gripman	Commissioned Officer Imperial Army
STAFF, VALENTINE NICHOLL (L.-Corpl.)	Conductor	37th Battalion Infantry
STEPHEN, JAMES MAIR	Track Cleaner	5th Battalion Infantry
STILL, JAMES HENRY	Gripman	3rd Pioneer Battalion
*STAFF, EDWARD JOHN	Conductor	39th Battalion Infantry
*STREADER, CHAS. OSBORNE	Shed Mechanic	Infantry

ENLISTED FOR ACTIVE SERVICE—Continued

NAME	OCCUPATION	MILITARY UNIT
*SULLIVAN, JOHN PATRICK	Gripman	23rd Battalion Infantry
SUMMERS, ELI CHARLES (Sergeant)	Conductor	7th Battalion Infantry
TAYLOR, ARTHUR FREDERICK (Corporal)	Gripman	1st Cycle Battalion
THOMAS, JOHN SUMNER	Gripman	Infantry
*THOMPSON, HAROLD ATHOL	Conductor	9th Light Horse
THOMPSON, WALTER WILLIAM	Conductor	Army Veterinary Corps
*TILLOTSON, HENRY HOLMES	Engine Oiler	46th Battalion Infantry
TOONE, WILLIAM HAROLD	Fitter	Field Company Engineers
*TREVORROW, THOMAS HAWTHORN	Conductor	2nd Pioneer Battalion
*TRIM, WILLIAM JAMES	Gripman	Infantry
TROUSSELOT, EDWARD WILLIAM	Conductor	A.S.C. Details
*TUCKER, RICHARD	Gripman	7th Battalion Infantry
TURRELL, ARTHUR	Gripman	24th Battalion Infantry
VERNON, MARSHALL	Engine Oiler	4th Machine Gun Company
WALKER, THOMAS WILLIAM	Conductor	58th Battalion Infantry
WALSH, THOMAS MURTAGH	Engine Oiler	6th Battalion Infantry
WALTERS, CHARLES EDWARD	Gripman	Light Horse
WARFE, LESLIE	Track Labourer	8th Light Horse Regiment
*WATERS, WILLIAM JENKYN	Conductor	29th Battalion Infantry
*WATERSTON, JOHN WALKER	Conductor	35th Battalion Infantry
*WATERMAN, JAMES	Gripman	Infantry
*WATSON, GEORGE	Gripman	22nd Battalion Infantry
WESTLEY, ERIC JOSIAH	Engine Oiler	33rd Battalion Infantry
WHEELER, WILLIAM EDWARD	Body Maker	1st Australian Flying Corps
WILLCOCK, CLAUDE WOODWARD	Conductor	2nd Battalion Infantry
*WILLCOCKS, ERNEST	Conductor	6th Battalion Infantry
WILLEY, GEORGE HAROLD	Conductor	12th Field Company Engineers
WILLIAMS, DOUGLAS	Engine Oiler	23rd Battalion Infantry
WILLIAMS, FREDERICK BARTON	Conductor	1st Machine Gun Battalion
WILLIAMS, GEORGE	Track Repairer	37th Battalion Infantry
WILLIAMS, JAMES HENRY (Sergeant)	Gripman	1st Field Artillery Brigade
*WILLIAMSON, ROBERT LYALL	Conductor	46th Battalion Infantry
*WILSON, JAMES LESLIE	Conductor	2nd Royal Sussex Field Artillery
WOODYATT, ALBERT EDWARD	Gripman	Field Artillery
*WHYTE, THOMAS	Shed Mechanic	Infantry
*YOUNG, JOHN THOMAS	Conductor	Infantry

*Discharged from Active Service

AWARDS FOR VALOUR

FLEMING, ALBERT H. P. (Warrant Officer)	Military Cross
AITKEN, JOHN CHARLES (Lieutenant)	Military Medal
FITZPATRICK, JOSEPH (Sergeant)	Military Medal
JONES, ERNEST EDWARD (Sergeant)	Military Medal
KIERNAN, PATRICK JOHN (Bombardier)	Military Medal
LYNCH, DANIEL T. E.	Military Medal
MEIKLE, WILLIAM BRUCE (S.Q.M. Sergt.)	Military Medal
McLACHLAN, JAMES (2nd Lieutenant)	Distinguished Conduct Medal
POULTER, PERCY	Cross of St. George

CHART SHOWING FOUR-WEEKLY TRAFFIC RECEIPTS

YEAR ENDED 30th JUNE, 1916 (Black)
 " " " " 1917 (Red)
 " " " " 1918 (Green)

REVENUE
 £77,000

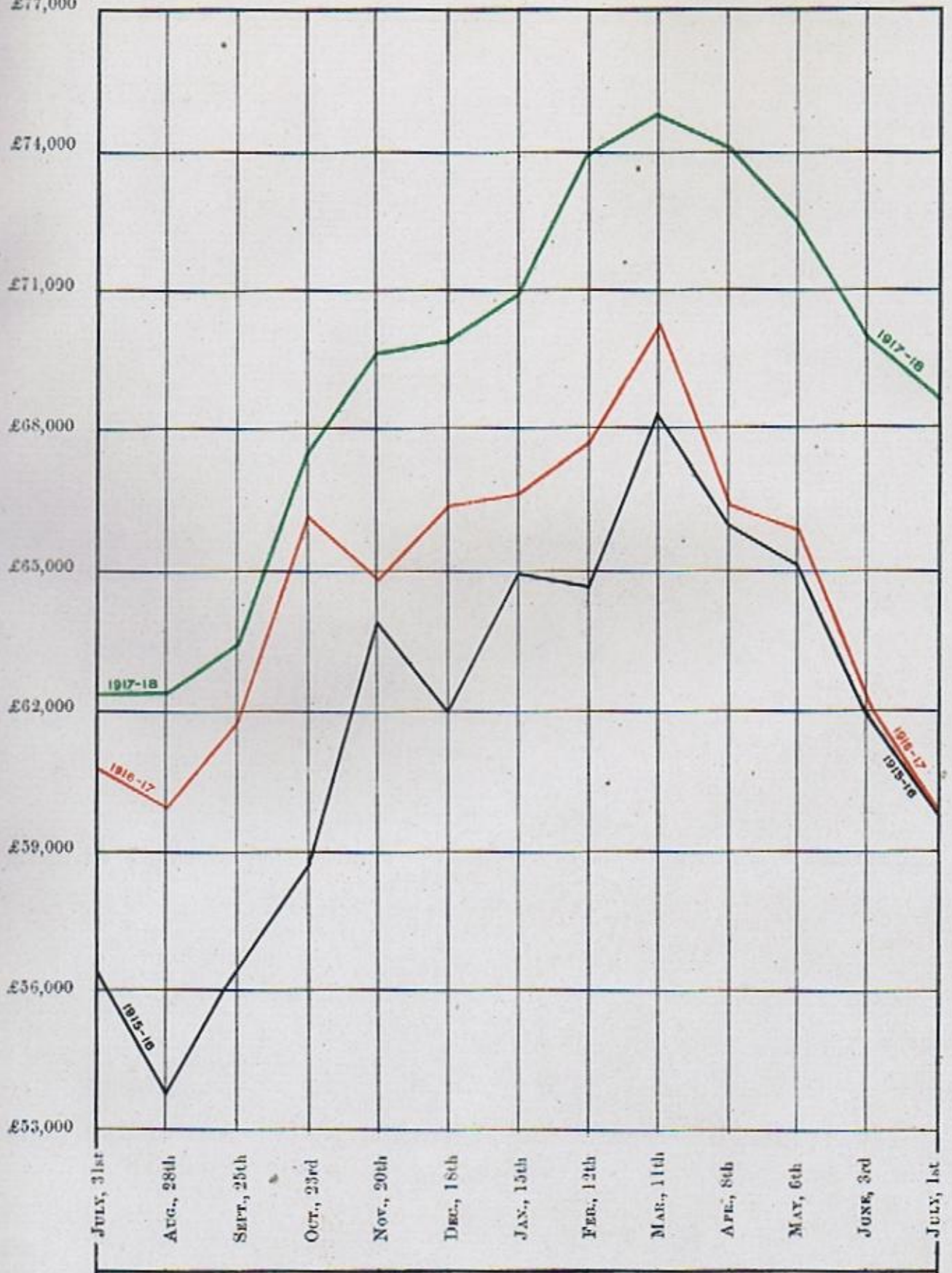


CHART SHOWING FOUR-WEEKLY RETURNS OF PASSENGERS CARRIED

YEAR ENDED 30th JUNE, 1916 (Black)
 " " " " 1917 (Red)
 " " " " 1918 (Green)

PASSENGERS

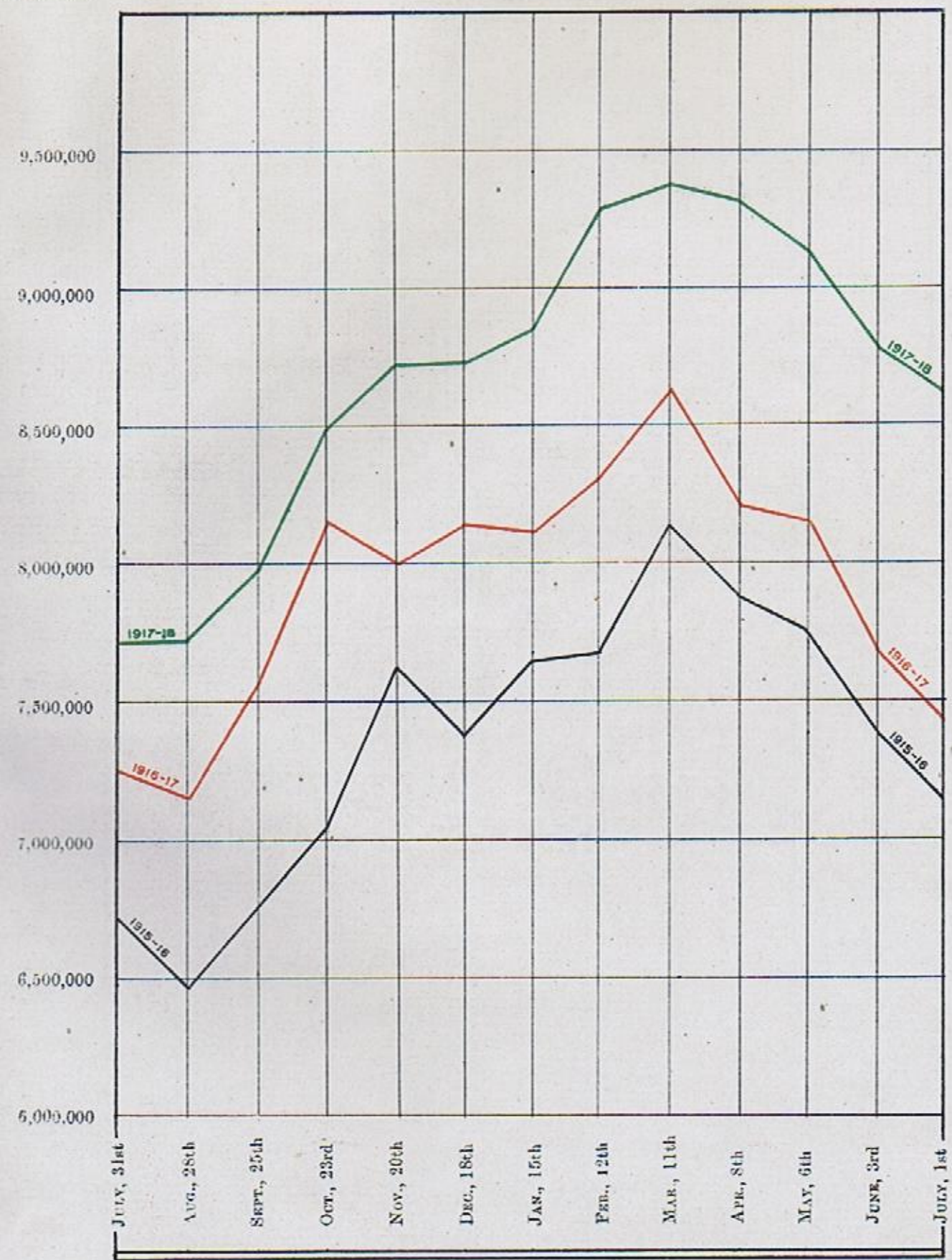


CHART SHOWING FOUR-WEEKLY TRAIN MILEAGE

YEAR ENDED 30th JUNE, 1916 (Black)
 " " " " 1917 (Red)
 " " " " 1918 (Green)

