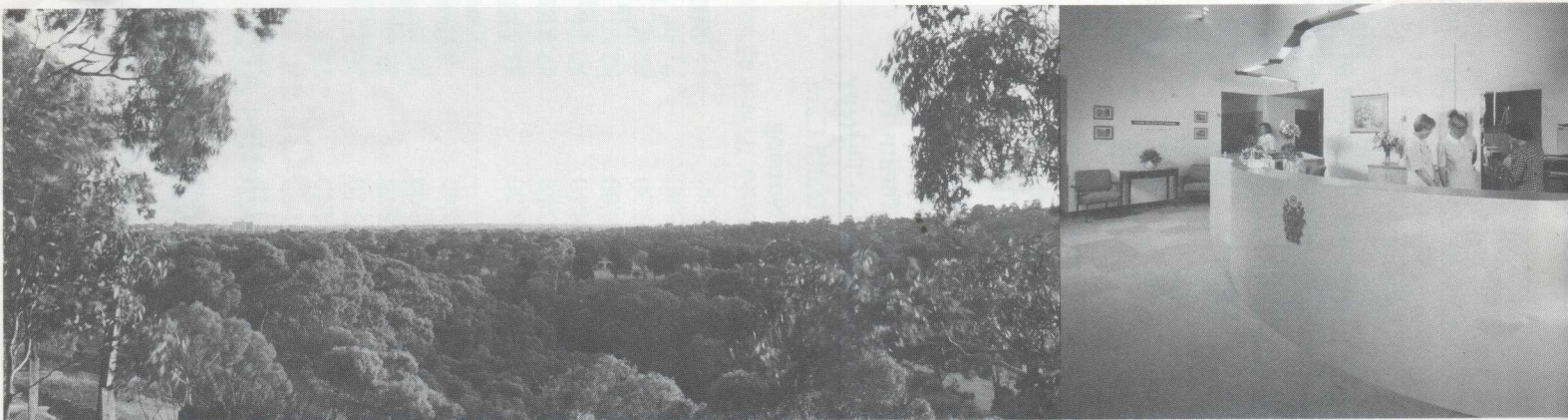


# Transport Friendly Society

487 Swan Street, Richmond 3121. Telephone: (03) 429 1888. Fax: (03) 427 1265

## Vimy House Private Hospital

*You'll notice the difference*



5 Studley Avenue, Kew 3101

At Vimy House we offer a standard of facilities, care and service which really makes a difference to patients. At our 50 bed hospital which specialises in "State of the Art Surgery" we offer the latest and best in surgical technology and equipment. We have particular expertise in minimally invasive surgery.

The surgical specialities we provide include:

- ★ Gynaecology
- ★ Orthopedics
- ★ Plastic Surgery
- ★ Maxillofacial Surgery
- ★ Ear, Nose & Throat Surgery
- ★ General Surgery

Whatever type of surgery you require, you can be confident you will be benefiting from some of the most advanced procedures and equipment available.

### *Comprehensive Range of Services:*

- ★ Radiology Services (on-site) provided by Victorian Imaging Group. (It is worth noting that this group will give special benefits to T.F.S. members at their 26 other sites.)
- ★ Pathology Services (on-site) supplied by Dorevitch Pathology.
- ★ Regular Pharmacy and Physiotherapy Services.

All this together with a delightful room and views with dedicated nursing and ancillary staff are available to you, our members for Basic Hospital Cover with few additional charges.

To enter Vimy House you have your General Practitioner refer you to a specialist who operates at Vimy. A simple inquiry on Telephone Number 853 1422 will give you all you want to know about **your hospital**.

# The Transport Friendly Society offers you the Best Health Cover you can afford.

Compare our rates with our present cover – see over for table of comparisons.

Open to all persons involved with public transport services and children of members.

Payroll deductions can be arranged, or direct payment to the T.F.S. will attract 2 to 8% discounts.

## Why you should join the T.F.S. now

### HOSPITAL BENEFITS

Surgical/Obstetrics	Advance Surgery
Intensive & Coronary Care	Theatre Fee & Recovery
Labour Ward	Medical
Rehabilitation	Psychiatric
Neurological Lithotripsy	Prostheses

#### Free Hospitalisation at Vimy House (Conditions Apply)

All members and their dependants (include children under 17 and full time student dependants under 25) are entitled to Free Hospitalisation (excluding phone) in Vimy House for 13 weeks in any one year provided they have Basic Hospital Cover (and have qualified).

1. Admission must be arranged by a medical practitioner. The medical practitioner shall be responsible for arranging any surgery and ongoing medical care. Surgery performed in Vimy house shall only be performed by a practitioner qualified in the appropriate specialty.
2. Vimy House is registered under the Health Act as an Acute Surgical and Medical Hospital. Under the terms of registration only patients having an illness requiring continuous medical care and treatment may be accommodated.

### EXTRA BENEFITS

Chiropody (Podiatry)	Bush Nursing
Osteopath & Naturopath	Psychology
Ambulance	Dietitian
Occupational Therapy	*Dental
Acupuncture	*Physiotherapy
Hearing Aid	Outpatient Theatre Fees
Optical	Eye & Speech Therapy
Dispensary	Overseas Health Care
Chiropractic	Home Nursing

**\*SOCIETY DENTAL CLINIC**  
T.F.S. Dental Clinic is located at:  
Vimy House Private Hospital  
5 Studley Avenue, Kew  
Telephone 853 2691 for appointment.

**\* SOCIETY PHYSIOTHERAPY CLINICS**  
66 Mount Street, Heidelberg  
(Brian Atherton) Telephone 457 1563  
84 West Toorak Road, South Yarra  
(Stuart Imer) Telephone 866 2321

### THE SOCIETY OWNS & OPERATES:

"Vimy House" Private Hospital,  
Kew

"Karinyah" Nursing Home,  
Camberwell

"The Mornington" Retirement Village,  
Mornington

### OTHER SERVICES:

**MEDICAL SERVICES** At Vimy House or Swan Street.

**CLINICS:** \* Dental, Eye, X-Ray and General Practitioner.

**FREE PHYSIOTHERAPY** \* Treatment at our clinics.

**FREE LOAN OF CRUTCHES\***

**FREE FINANCIAL & INVESTMENT ADVICE**

Contact Don Barker at Swan Street  
or telephone 427 1263.

**FUNERAL FUND** available.

\* CONDITIONS AND/OR YEARLY LIMITS APPLY.

## Transport Friendly Society

Registered under the Friendly Societies Act.

487 Swan Street, Richmond 3121. Telephone: (03) 429 1888 Facsimile: (03) 427 1265

*For a better deal why not contact us for a quote on your requirements.*

## HISTORICAL NOTES AND OBJECTIVES

The Transport Friendly Society was founded in 1888 by a group of employees of the then Melbourne Tramway and Omnibus Company, to provide sickness and funeral benefits in an age when Social Services were practically non-existent, and sickness or death could bring families to destitution.

The Funeral Fund still survives although the sick pay was discontinued at the end of 1975. With the establishment of the Melbourne and Metropolitan Tramways Board in 1923, the Society became known as The Mutual Benefit Society of the Employees of the Melbourne and Metropolitan Tramways Board. In 1971 the Society became simply, the "Tramways Benefit Society" and then the "Transport Friendly Society" in 1990. As membership grew, the Society started to prosper, and doctors were engaged to provide a medical service.

In 1932 an outpatient hospital was opened in Capitol House, Swanston Street, providing an operating theatre, dental surgeries, physiotherapy department, chiropody and doctors rooms.

After World War II, the Society began planning for a new hospital where in-patients could be accommodated and in 1949, Vimy House in Queens Road, Melbourne, was purchased.

This hospital, with a reputation for exceptional care, had been opened in 1920 by two nurses, returned from France, and named after the Vimy Ridge battlefield.

In 1970 the aging Vimy House was sold in order to purchase the present site at Kew, and to build the new Vimy House. The hospital soon re-established the friendly atmosphere that had previously characterised its service to the Society and the community.

In 1987, 30 acres of land was purchased in Tyabb Road, Mornington for the Retirement Village, which will ultimately comprise one hundred and fifty eight 2 & 3 bedroom units and 49 apartments, a dining room and spa, etc.

The Free Financial and Investment Advice service began in 1988, and the Richmond offices were purchased in 1993 to house the Society's Administration staff and set up new Dental and Medical Clinics, thus releasing areas at Vimy House for additional specialist consultancy suites.

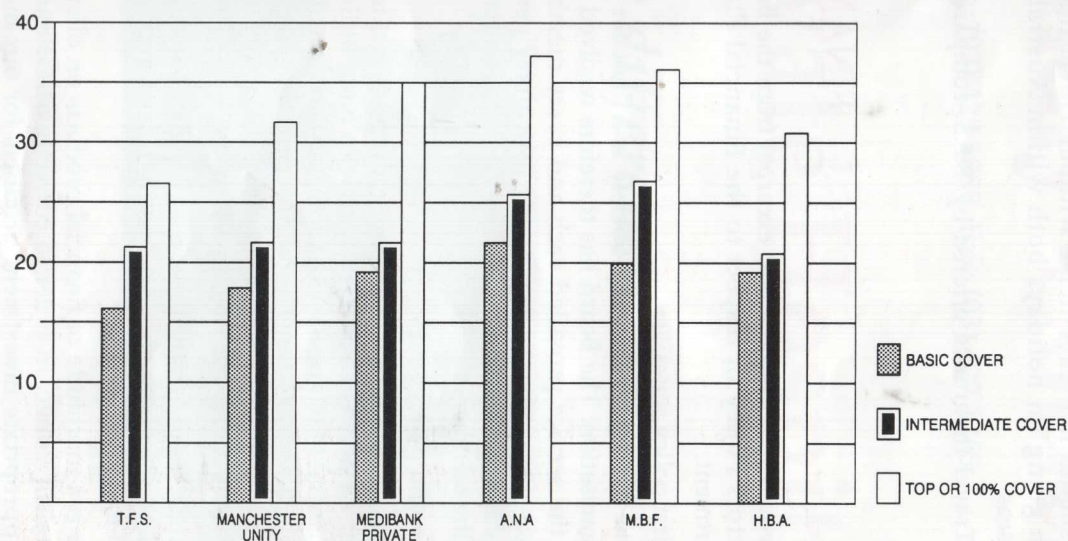
The Transport Friendly Society is proud of its achievements and all credit belongs to its founders and to succeeding volunteer committees, trustees and delegates, who have helped to build the society into the prosperous, progressive organisation it is today.

## T.F.S. CONTRIBUTION RATES AS AT 1/10/93 ARE AS FOLLOWS:

	PAYROLL DEDUCTIONS			DIRECT PAYMENTS		
	Weekly	F/nightly	Monthly	Quarterly	Half Yearly	Yearly
<b>SINGLE</b>						
Hospital Table 1	9.25	18.50	40.10	117.90	230.90	442.55
Hospital Table 2	11.85	23.70	51.40	151.05	295.80	566.95
Hospital Table 3	14.15	28.30	61.35	180.35	353.20	676.95
Hospital Table 1 & Extras	13.10	26.20	56.80	166.95	327.00	626.75
Hospital Table 2 & Extras	15.70	31.40	68.10	200.10	391.90	751.15
Hospital Table 3 & Extras	18.00	36.00	78.05	229.40	449.30	861.15
Extras Only	4.40	8.80	19.10	56.10	109.85	210.55
<b>FAMILY</b>						
Hospital Table 1	18.30	36.60	79.35	233.20	456.75	875.50
Hospital Table 2	23.50	47.00	101.85	299.45	586.55	1124.25
Hospital Table 3	28.10	56.20	121.80	358.05	701.35	1344.35
Hospital Table 1 & Extras	26.00	52.00	112.70	331.30	648.95	1243.90
Hospital Table 2 & Extras	31.20	62.40	135.20	397.55	778.75	1492.65
Hospital Table 3 & Extras	35.80	71.60	155.15	456.15	893.55	1712.75
Extras Only	8.60	17.20	37.30	109.60	214.65	411.50

Funeral Fund included in above rates. If over 45 years of age when joining, the contribution rate will be approximately 10c less per week

## TABLE OF WEEKLY FAMILY RATES COMPARED WITH OTHER FUNDS'



AS FAR AS POSSIBLE THE RATES COMPARED ABOVE ARE CORRECT AT THE TIME OF PRINTING

## TRAVEL INSURANCE

One should not leave home without Travel Insurance when going on holidays both within Australia and Overseas.

The Travel Insurance offered by T.F.S. compares most

favourably with all other Travel Insurance.

The next time you are going on holidays why not give us the opportunity to quote on your Travel Insurance.

Telephone: (03) 429 1888

## FINANCIAL ADVISOR

We would like to quote two excerpts from the Board of Directors Policy in respect to the Financial Planning Department.

The first policy states:

"The Transport Friendly Society is a "not for profit" organisation. The Board has therefore resolved as part of the service provided each and every member will receive as a minimum rebate at least thirty percent of any initial brokerage earned by T.F.S. in the placement of the members funds.

The second policy states:

"It is of paramount importance for the Board to know that all of the T.F.S. members who have utilised the Financial Planning Service receive satisfactory financial service and are being provided with on-going advice and information which ensures satisfactory and tax effective returns on their investments."

Thus, the main thrust of these two policies ensures that T.F.S. members receive reasonably priced and soundly based financial advice.

There is a multitude of financial products on offer to the Australian Public. In order to correctly assess and select the appropriate investment products for our members T.F.S. utilises the financial research and software facilities of one of Australia's leading financial research companies, F.P.I. Limited. This company's timely and insightful reporting highlights suitable investment opportunities for the resourceful investor.

Part of the on-going services provided by T.F.S. is guidance in taxation matters and guidance in the preparation of Job Search and Age Pension Application Forms.

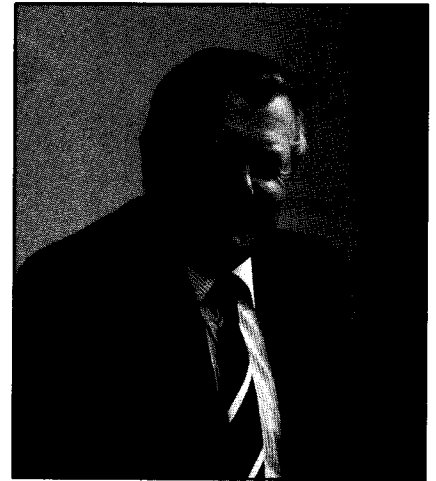
The rules pertaining to eligibility for the Job Search Allowance and the Age Pension are becoming more and more complex, and more worrying for those who have left the work force.

We have concentrated on finding out how to make the best possible use of the various investment options in order to maximise pension income and to minimise income tax. This can be achieved through the use of Allocated Pensions and Immediate Annuities and the judicious use of Share Trusts.

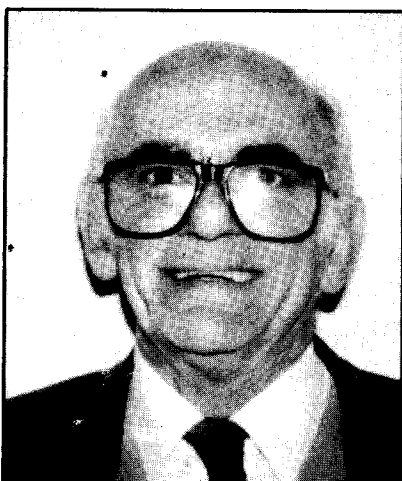
Those Pensioners who rely solely on Bank interest to supplement their pension will surely erode the earning power of their Capital over the passage of time.

Apart from Pensioners, T.F.S. has been able to assist the many P.T.C. members who have accepted voluntary departure packages. The F.P.I. Research Information has been able to identify Rollover products which have not only provided Capital stability, but also better than average returns on investment.

The Financial Department now has in excess of 450 clients who have nearly fifty million dollars invested in products recommended by this Department.



*Don Barker*



**Dr. Raymond Petersen**, after spending 14 years at Vimy House has now relocated his surgery to T.F.S. Office, 487 Swan Street Richmond, where he extends a welcome to all T.F.S. members.

Dr. Petersen continues to admit patients to Vimy and refer patients to specialists who operate at Vimy House.

As you are aware, in using your hospital (Vimy) you are not subject to "out of pocket" expenses for Theatre or accommodation.

**Dr. Raymond A. Petersen – Consulting Times**

487 Swan Street, Richmond. Telephone: 427 8355

Tuesday, Thursday, Friday 9:00am – 11.00am.

Monday to Friday 2:00pm – 3:30pm.

24/10/2018.

To whom it may  
concern,

Please find this leaflet  
for Vimy House as a donation to  
your museum. (printed/current for  
September 1993?).

I saw on your website that  
this hospital has a long history with  
tram and rail employees.

My father, Roy Mitchell, was  
with the Victorian Railways and  
this has come from his collection.

He is happy for it to go to a new  
home.

Cheers-

Rebekah Blackwolf-Mitchell

PO Box 8077

Burwood Heights

VIC 3151

