



BACK TO THE FUTURE

As the whole world shifts back to more public transport use, take a look at our past.

If you are ever looking for something to do, just yourselves or with the family or friends, and you only have a few hours, why not take a trip to the Melbourne Tram Museum on the second or fourth Sat of the month (except Dec when it is open on the second Saturday of the month).

Not my scene you say, maybe or maybe not, but where else can you visit for just a gold coin donation (if you are happy to take yourself around), or, if you prefer, ask for a price for a guided tour with a knowledgeable volunteer, and soak up the nostalgia of the "good old days". More school holidays will soon be here, so why not take the children along too.

Our daughter was doing some research and asked us to go along and, despite my reservations, I was taken aback by these 20 restored trams. Being a newbie to Melbourne I had not experienced the smells and glamour of these old beauties while they were in use.

We were made very welcome by our knowledgeable, volunteer guide who took us on to most of the Trams, and explained when and where they were used, their advantages and disadvantages (of course there were many). Imagine travelling on a 40 deg day, in a long dress or a suit,

with no windows or air conditioning. Imagine sitting on a wooden seat in the winter, with the rain pouring in the sides. A far cry from today's air conditioned smart, sleek version with protection from the elements.

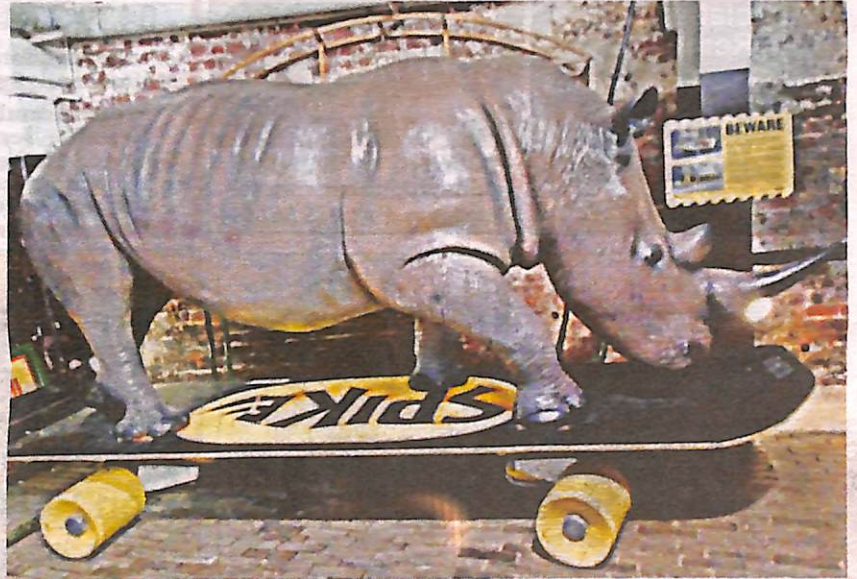
There is plenty of information about the Trams to read, and you may be surprised just how interesting a tram can be.

You will also see the Rhino on a skateboard, used in the Yarra Trams safety campaign.

As a special treat save the best for last, and view the W11 decorated in Karachi. You will be wowed by the decorations.

Finally, when you are "trammed out", pay a visit to the shop and find something to buy a gift for yourself, friends or family. There are lots to choose from, including Informative books, tea towels, socks, badges, toys, magnets, models, biscuits and more.

Just to give you a taste of what you are missing, here are a few photos to whet your appetite.



Find the Melbourne Tram Museum at 8 Wallen Road Hawthorn; Mel 45 B12 or contact them at info@trammuseum.org.au They are a nine minute walk from Hawthorn Station, or a short ride on the Swan Street Tram from Richmond Station.



Fairy Wren

paintings in Cinema Lane, Boronia - South West corner of Dorset Square.

Well worth a visit if you're not familiar with the lane.

Photos of the lane birds by Veronica.