

WELLINGTON PARADE TERMINUS UPGRADE

Wellington Parade: Between Hoddle Street and Clarendon Street, East Melbourne

Wellington Parade between Hoddle Street and Clarendon Street will be closed to through traffic between 25 October and 2 November 2020 to upgrade the tram terminus and replace tracks and overhead wires. Expect road closures, parking and local access changes, detours for public transport, traffic, bicycle users and pedestrians.

	Early works	Major works
When	Multiple dates (see over page)	Sunday 25 October to Monday 2 November 2020
What's happening	<ul style="list-style-type: none"> – Setting up work area including traffic management – Identifying underground services – Removal of old and installation of new overhead wires and poles – Building new kerb for pram crossing and installing tactiles – Delivery, welding and grinding of tram rails 	<ul style="list-style-type: none"> – Setting up work area including traffic management, signage and temporary site sheds – Digging up the tracks and removing rubble – Renewing the overhead tram wires and tracks – Raising the tram terminus tracks to separate trams from the road – Installing traffic signals and traffic islands – Upgrading street lighting – Installing formal driver walkways and toilets
What to expect	<ul style="list-style-type: none"> – Day and night works – Medium-to-high levels of noise during the day e.g. concrete, asphalt and steel cutting, welding of rail – Mostly low-to-medium levels of noise during the night with some short periods of high level noise e.g. rock breaking and concrete cutting – Local temporary lane, parking and footpath closures for short periods of time – Vehicles, trucks, machinery and contractors on site 	<ul style="list-style-type: none"> – 24-hour works – High levels of noise during the day and evening until 10pm e.g. concrete, asphalt and steel cutting – Wellington Parade closed to through traffic between Clarendon Street and Hoddle Street with some local access to side streets – Detours for public transport users, cyclists, and motorists

If you have any mobility issues, medical needs or urgent access requirements that may be affected by these works, please contact us before the work starts on **0466 853 477** or projects-comm@yarratrams.com.au.

Early works

Pole installation work



7pm to 5am, Thursday 8 October and Monday 12 October to Wednesday 14 October 2020

- Setting up work area including traffic management.
- Digging holes and installing new poles.

Other early works



7am to 6pm, Monday 5 October to Friday 9 October and Tuesday 13 October to Thursday 15 October 2020

- Setting up work area including traffic management.
- Identifying underground services.
- Removal and installation of overhead wires.
- Removal of old poles in Weedon Reserve.
- Building new kerb for pram crossing and installing tactiles.

Rail delivery and welding



7am to 6pm, Friday 16 October to Sunday 25 October 2020

- Setting up work area including traffic management.
- Welding and grinding of tram rails.

6pm to 5am, Sunday 18 October to Wednesday 21 October 2020

- Delivery of tram rails.

Road and parking



Some temporary lane closures in Wellington Parade and Hoddle Street and removal of on-street car parking. No roads will be closed.

Please observe and follow construction signs and traffic management.

Public transport



No changes to trams on Wellington Parade.

Pedestrians



There may be temporary footpath closures.

Noise and dust



Medium-to-high level noise and low-to-medium level dust can be expected.



Major works

**Sunday 25 October to
Monday 2 November 2020
(24-hour works from 10pm
Sunday 25 October)**

Works



Major works will occur day and night (24-hours a day) and include:

- Setting up work area including traffic management, signage and temporary site sheds.
- Digging up the tracks and removing rubble.
- Renewing the overhead tram wires.
- Raising the tram tracks to separate trams from the road.
- Installing traffic signals and traffic islands.
- Upgrading street lighting.
- Installing driver walkways and toilets.

Road and parking



Wellington Parade between Hoddle Street to Clarendon Street will be closed to through traffic from 10pm Sunday 25 October to 6am Monday 2 November 2020.

During the work, eastbound local traffic will:

- Be able to access Powlett Street.
- Be restricted between Powlett and Hoddle Streets from 7pm to 6am, Wednesday 28 October to Sunday 1 November 2020 (except in emergencies).
- Not be able to access Simpson Street.

Access to Berry and Vale streets to remain open to local traffic under traffic management.

No on-street parking will be available on Wellington Parade.

Noise and dust

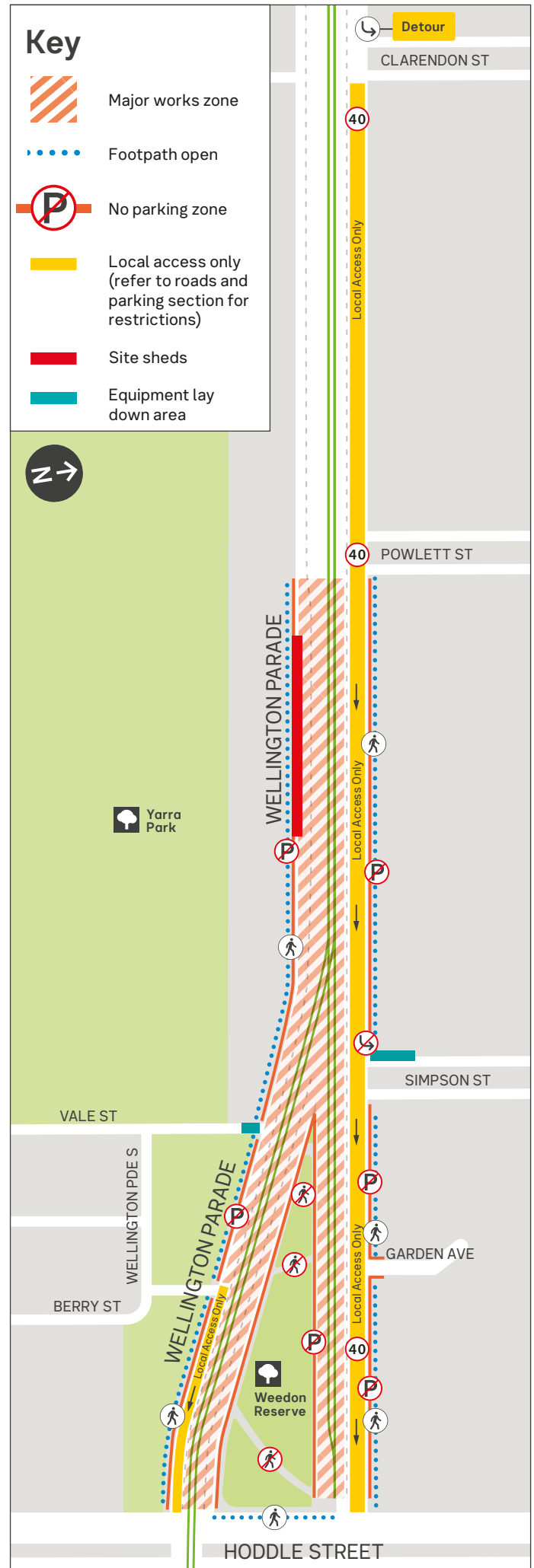


Construction will occur 24-hours a day.

Noise and dust are unavoidable, but we will work to minimise this as much as possible and complete the noisiest works between 6am to 10pm.

High levels of noise are expected during the first couple of days while the tracks are dug out and rubble removed.

For the rest of the work there will be short periods of high level noise.



Major works continued

Public transport



There will be service changes to **tram routes 48 and 75**.

We recommend you allow extra time for your journey. For more information closer to the time visit: yarratrams.com.au/servicechanges

Pedestrians



Footpaths will be open along Wellington Parade.
No footpaths will be open in Weedon Reserve.

Open for business



Businesses in Wellington Parade will be open during early and major works and will be accessible via footpaths. Please continue to support local businesses during these essential tram works.

As this work is necessary to maintain a safe tram network as required by the *Rail Management Act 1996* (Vic), Yarra Trams will not compensate any third parties for any losses incurred during the project.

Close out works

Once the major works are complete, we will need to do some close out works. This work will include connecting the new driver toilets to electricity and other remediation works.

CitiPower will upgrade or relocate their overhead electrical assets from old to the new poles. Once this has occurred, Yarra Trams will remove the old poles.

CitiPower will liaise with all residents and businesses in the area before their work commences.

Construction during COVID

Critical infrastructure projects will continue during COVID-19 restrictions. This includes safety and maintenance works on roads and public transport, and road safety projects that maintain critical safe operations on the road network. To ensure the safety of all workers and the community, all construction and maintenance work undertaken will operate under a High Risk COVID Safe plan.

About the project

We're upgrading the Wellington Parade tram terminus near Simpson Street, East Melbourne, to improve safety.

The upgrade will also provide extra capacity for up to eight low floor trams to be stored during special events.

The increased capacity and safety improvements will mean improved tram operations, particularly during special events.

To find out more about the project:



yarratrams.com.au/projects



0466 853 477



projects-comm@yarratrams.com.au



For information in other languages:

普通話	9321 5454	廣東話	9321 5441
Italiano	9321 5444	ਪੰਜਾਬੀ	9321 5445
Ελληνικά	9321 5443	हिन्दी	9321 5442
Việt-ngữ	9321 5449	සිංහල	9321 5446
عربي	9321 5440	Español	9321 5447

If your language isn't listed visit ptv.vic.gov.au/languages or call **9321 5450**.