

Tram service changes

Route

1	3	3a	5	6	16
64	67	72			

2.30am Sunday June 27 to
last tram Sunday July 11



Tram service changes

We're renewing tram tracks and overhead wires along Swanston Street, St Kilda Road and Southbank Boulevard. We're also doing upgrade works for Stop 13 Flinders Street Station.

Your journey may be affected during the works, so plan ahead, consider alternative travel and allow extra time.

- 1** **Route 1** trams run between South Melbourne Beach and East Coburg diverting via Kings Way, William Street and La Trobe Street between Stop 22 Dorcas St and Stop 7 RMIT University.
- 3** **Route 3** and **3a** trams run a shortened service between East Malvern and Stop 17 Grant St/ Police Memorial.
- 5** **Route 5** trams run a shortened service between Malvern and Stop 38 Orrong Rd, connecting with **Route 64** trams to Grant Street.
- 6** **Route 6** trams run in sections with no trams between Stop 11 Collins St and Stop 17 Grant St/ Police Memorial.
- 16** **Route 16** trams run a shortened service between Kew and Stop 17 Grant St/Police Memorial. A shuttle service will run between Melbourne University and Stop 11 Collins St.
- 58** **Route 58** trams run as normal but may experience increased patronage. If you need to change trams, your journey may be affected.
- 64** **Route 64** trams run a shortened service between East Brighton and Stop 17 Grant St/ Police Memorial.
- 67** **Route 67** trams run between Carnegie and Melbourne University, diverting via Kings Way, William Street and La Trobe Street between Stop 22 Toorak Rd and Stop 7 RMIT University.
- 72** **Route 72** trams run a shortened service between Camberwell and Stop 17 Grant St/ Police Memorial.

Getting around the work zone



Alternative travel options



Route 1a, 58 and 67a trams between Stop 22 Toorak Rd/Dorcas St and Stop 7 RMIT University travelling along Kings Way, William Street and La Trobe Street.

Trams along Bourke Street, Collins Street and Flinders Street to connect with diverting services.



Sandringham, Cranbourne, Frankston, Glen Waverley and Pakenham Line trains between the south eastern suburbs and City Loop stations.

Accessibility



If you need assistance, speak to our customer service team or alert your driver.

Accessible taxi services will be available at Stop 17 Grant St/Police Memorial:

- 7am to 8pm on weekdays
- 8am to 8pm on weekends

Need help?

Our customer service team is there to assist you during your journey on the network, and the team in our Operations Centre will keep you updated with service changes via Twitter and tramTRACKER.

For more information visit ptv.vic.gov.au or call 1800 800 007.

If you're deaf, or have a hearing or speech impairment, contact us through the National Relay Service – for more information, visit relayservice.gov.au



For information in other languages:

普通話	9321 5454	廣東話	9321 5441
Italiano	9321 5444	ਪੰਜਾਬੀ	9321 5445
Ελληνικά	9321 5443	हिन्दी	9321 5442
Việt-ngữ	9321 5449	සිංහල	9321 5446
عربي	9321 5440	Español	9321 5447

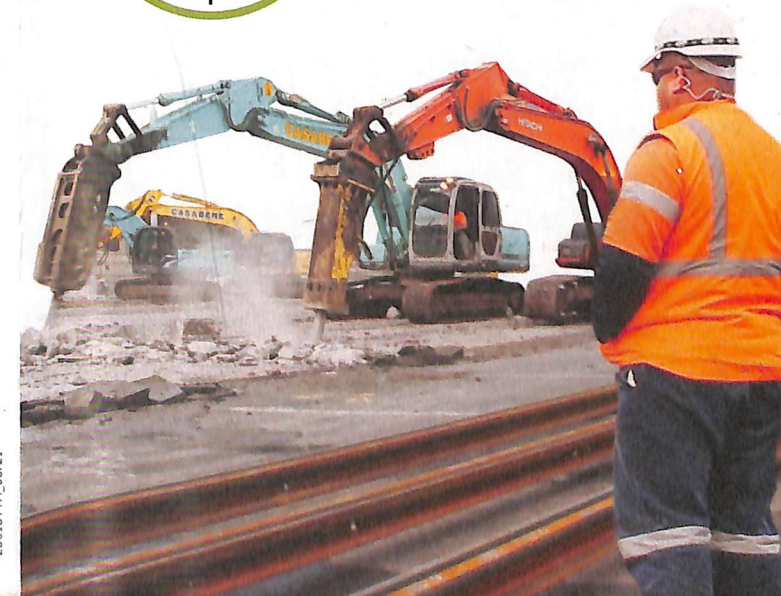
If your language isn't listed visit ptv.vic.gov.au/languages or call 9321 5450.

PUBLIC
TRANSPORT
VICTORIA **PT>**

Tram service changes

Route **1** **3** **3a** **5** **6** **16**
64 **67D** **72**

2.30am Sunday June 27 to
last tram Sunday July 11



Authorised by the Victorian Government, 1 Treasury Place, Melbourne.

20015V7M_05/21

Tram service changes

Routes and symbols

- Tram service
- Tram terminus
- Altered tram service
- No tram service
- Train line
- Work zone
- Night Network

Pedestrian access is limited. Refer to the signage around the work zone.

This map is a guide only.



Route 6 trams run between Stop 11 Collins St and Moreland. Shuttle trams run as Route 16a between Stop 11 Collins St and Stop 1 Melbourne University.

Route 3, 3a, 6, 16, 64 and 72 trams run between the south eastern suburbs and Stop 17 Grant St.

Route 1 trams divert via Kings Way, William Street and La Trobe Street, between Stop 22 Dorcas St and Stop 7 RMIT University.

Route 67 trams divert via Kings Way, William Street and La Trobe Street between Stop 22 Toorak Rd and Stop 7 RMIT University.

Route 5 trams run between Malvern and Stop 38 Orrong Rd, where passengers can connect with Route 64 trams.

