

# "Tickets please"

## Australasian Bus tickets (except NSW)



**Richard C Peck**  
Version: August 2006

**Errata:**

The pages for Queensland and Western Australia should be renumbered from 1 up to correspond with the contents. In the acknowledgements Marin Walker should read Martin Walker.

<b>Contents</b>	
<i>Preface</i>	1.2
<i>Overview of transport</i>	1.4
<b>VICTORIA</b>	
MMTB	2.1
Generic tickets	2.1
Private operators	2.3
Ferries	2.24
<b>QUEENSLAND</b>	
Brisbane City Council Bus Services	3.1
Qld Rail Co-ordinated services	3.18
Private buses	
Generic tickets	3.18
Individual companies	3.19
Rail/bus	3.47
Bus freight	3.47
Tolls	3.48
Ferries & freight	3.51
<b>SOUTH AUSTRALIA</b>	
The MTT/STA	4.1
Private buses licensed by MTT	4.14
Transport Control Board	4.15
SA Railways	4.16
Private buses	4.14
Bus freight	4.19
<b>NORTHERN TERRITORY</b>	5.1
<b>WESTERN AUSTRALIA</b>	
Metropolitan (Perth) Transport Trust	6.1
Private buses	6.7
Rail/bus	6.17
Ferries	6.18
<b>TASMANIA</b>	
Metropolitan Transport Trust	7.1
Transport Commission	7.2
Private buses	7.3
Bus freight	7.4
Ferry	7.4
<b>NEW ZEALAND</b>	
Auckland	8.1
Christchurch	8.8
Dunedin	8.9
Invercargill	8.10
Wellington	8.11
Private buses & rail	8.12
Ferry	8.15
<b>AIRLINE GROUND TRANSPORT</b>	9.1

## TICKETS PLEASE

### Bus & tram tickets of the Australian states (other than NSW)

by Richard C Peck

I am currently engaged in researching and publishing with Robert Merchant a series of four volumes on NSW transport tickets (other than rail) called *Fares Please*. This will include NSW country buses (Volume 1), Sydney private buses (Volume 2), trams and government buses (Volume 3) and ferries, tolls, combined tickets and miscellanea (Volume 4). Ferries and railways will only be included if their tickets were issued by the tramway or bus authorities. The first volume will appear in 2006.

*Fares Please* started out as one book on NSW tram and bus tickets. One person who was particularly helpful with this was Greg Travers who suggested we contact the Bus & Coach Association (NSW) as they held a large collection. This turned out to be that of Ken Magor (1912-1994) and includes photos of buses as well as much ephemera including tickets. Consequently we decided to treat the private sector first. A monograph titled *Please destroy on alighting* was published by the Cinderella Stamp Club of Australia based on tickets in the Magor Collection.

I then saw a need for a more definitive work, hence this series which will parallel *Fares Please* but deal with Australia other than NSW. Hopefully it will stimulate others to produce a more definitive set of catalogues. The focus is on the traditional types of tickets, information about modern types is given where known. The following are NOT included: local railway stamps (eg, Puffing Billy, Thirlmere) and some early delivery services (eg, Bryce's) which have been treated in *Cinderellas Australasia*, journal of the Cinderella Stamp Club of Australasia. Tolls and ferries and freight labels are included where known as they relate to bus carriage.

I would like to thank the following for their assistance (alphabetical order):

Keith Atkinson, Dave Elsmore, Ric Francis, Ray Garlick, Vic and Margaret Hayes, Robert Henderson, Robert Merchant, John Murray, Will Plumridge, Tony Presgrave, Graham Stewart, Greg Travers, Marin Walker, John Ward and Andrew Young. Special thanks is due to State Records NSW for permission to reproduce material<sup>1</sup>.

Additions and amendments are welcomed and should be sent to  
Richard Peck, PO Box 199 Drummoyne NSW 1470 ([rp359@idx.com.au](mailto:rp359@idx.com.au))

<sup>1</sup> State Records NSW: Government Transport; CGS 13100, Correspondence Files, 1902-1938 [8/1398-1359]

The aim of this catalogue is to give a broad brush outline of what exists in the field of Australasian tram and bus tickets (apart from NSW). Tolls and ferries are included where they are known. The use of tickets was made compulsory in NSW in 1924 but I am unaware of similar regulations elsewhere. Many small private bus operators made use of the fare box method of revenue collection where no tickets were issued. This work lists only those tickets known.

Tickets may be classified by their intended use (single, return, weekly, industrial, scholar) and how they were produced (flimsy paper, card or even pre-purchased theatre type tickets). *Ticket News* is the journal of the Australian Ticket Collectors Society and sometimes contains references and illustrations, though their focus is mainly railway. Coach type tickets are not within the bounds of this book but are mentioned where known. Tickets were either prepaid ("token") or cash. "Check" tickets were often issued in exchange for tokens. "Transfer" tickets allowed transfer between lines.

Colours can vary dramatically and are shown as "shades" between a hyphen. Thus "orange-brown" means "orange to brown". However without a hyphen "orange brown" would mean brown with a shade of orange, ie, "orange" is the descriptive adjective qualifying the basic noun "brown". The order of colours is generally shown as printing/paper or board stock/any additional printing (if any).

The paper is generally off white, which has probably deteriorated through age. Some printings however are on a distinctly whiter paper described here as "white". Advertisements on the back are in black unless stated. Generally the ticket numbers are also black unless stated.

The rarity of many items is as yet undetermined as many examples seen may be the only remaining examples. When one considers that a survival rate of 4% is good and the instruction to destroy, very few examples of Australian transport tickets have so far appeared on Ebay. However the Magor collection does contain sufficient examples of the main capital cities tickets from the 1920s to decimal currency in 1966 for a tentative rating to be suggested. This ranges from **R1** (most common) to **R5** (most rare). Time will tell if this can be applied more broadly.

Dates preceded by "A" are known archival specimens. When, for example, Queensland introduced tram weeklies in 1933 the NSW authorities were keen to know how the system worked, and were constantly writing to their counterparts. A selection of this correspondence has been reproduced in my *The Sydney Bus* series as Vol.18. Dates in ( ) are known at that date. #= stuck down into an album (and therefore no details of the back known).

The tickets are listed in what I believe is their chronological order of issue, based on any known dates (some are dated by the users on the back and these dates are shown in brackets), any archival sources and their general type layout. Changes of colour generally indicated the end of a series of numbers, changes of format or layout indicate a deeper reason within the printing works such as new machinery.

Single tickets are generally reproduced exact size but multiples and larger items have been reduced in varying degrees. Freight is included mainly where carried by tram or bus. References are also to general freight carriers which issued stamps or tickets. This work is not intended as a treatise on companies or fares though details are included where known.

Complete (ie, unused) tickets taken from residue butts are sometimes more common than genuinely used tickets.

Australia adopted decimal currency on 14.2.1966 and New Zealand on 10.7.1967.

## An overview of urban public transport in Australasia (excluding trains)<sup>2</sup>

### AUSTRALIA

#### New South Wales

NSW Government Railways- Tramways Section 1861-1901, NSW Government Tramways 1901-1930, Metropolitan Transport Trust 1930-1932, Board of Commissioners 1932, Dept of Road transport & Tramways 1932-1952 (with omnibus division), Dept of Government Transport & Omnibus Services 1952, Dept of Government Transport 1952-1972, Public Transport Commission 1972-1980, Urban Transport Authority 1980-1990, State Transit Authority 1990-

**Sydney** 1861 horse tram >1866 horse bus, the horse bus era 1860s-1890s, 1879 steam tram, electric tram 1899-1961, cable tram 1894-1905, private motor buses 1910- , government buses 1932- (take over of private routes), trolley bus 1934-1959

**Newcastle** steam tram 1887, electrified 1923-1950, government take over of private omnibuses 1935-

**Maitland** steam trams 1910-1926, private buses

**Broken Hill** steam trams 191?-1926, along with private buses

#### Australian Capital Territory (formerly Federal Capital Territory)

Federal Capital Commission 1925-1930, Dept of Home Affairs 1930-1932, Dept of the Interior 1932-1972, Dept of the Capital Territory 1972-1983, Dept of the Territory & Local Govt 1983-

"Canberra Bus Service" 1923- > "Action" 1977

#### Northern Territory

Dept of territory & Works 1950 take over of private buses for town & school services as "Darwin Bus Service" >NT Government 1978

#### Queensland

**Brisbane** Brisbane City Council Dept of Transport 1925 take over of Boon Bros private bus & 1927 New England Motor Co, also ran trams to 1965, trolley bus 1951-1969

**Rockhampton** Rockhampton City Council Passenger Dept steam tram 1909, bus 1915 >private, bus again 1939- (take over of 4 private operators)

#### South Australia

**Adelaide** 1878 horse trams, 1909 electric trams- Municipal Tramways Trust -1958 (Glennelg line still open), MTT bus 1925, 1927 acquired private buses, trolley bus 1932-1934 & 1937-1963, MTT>Govt 1953, 1975 State Transit Authority & large take over of private buses 1975-1978<sup>3</sup>

**Victor Harbour** District Council of Victor Harbour Community Services Dept, 1980 town service

<sup>2</sup> Based in I Lynas, *Bus & Tram Government & Municipal Operators* (1983)

<sup>3</sup> Lewis Bros Coach Service, Bowmans BS Agnes 42 buses, Campbells BS Plympton Pk 14, Bridglans Pass Tpt Oaklands 16, Ex-Servicemens BS Nailsworth 10, Cole BS Edwardstown 21, Choat PS Stirling 17, Harcourt Gdns BS Edwardstown 12, Henstridge BS Colvelly Pk 18, Morphetts BS Prospect 19, Slaterys BS Payneham 17, Thomas Tours Daw Pk 18, Transway Services Elizabeth Sth 35, Footres BS Croydon Pk 14, Langs MS West Hindmarsh 10, Wrights Tourist Service Edwardstown 4, Briscoes MS Port Noarlunga & Mile End 27, D&R Coachlines Elizabeth, Premier Roadlines.

**Whyalla** Whyalla City Transport take over of private bus 1975

#### Tasmania

**Hobart** Hobart Electric Tram Co 1893-1960, bus feeder 1905, 1913 take over by Hobart City Council, ran buses 1925, trolley bus 1935-1968, 1955 with Tasmanian Transport Commission Road Services & Group Motor Service formed Metropolitan Transport Trust **Burnie** Metropolitan Transport Trust to 1959 operated by Nortons Motors P/L (ex Sid Hills) private bus

**Launceston** Launceston Municipal Transport tram 1911-1952, 2 private buses 1924, own buses 1926, trolley bus 1951-1968, to MTT 1955

#### Victoria

**Melbourne** Metropolitan Omnibus Co 1869> Metropolitan Tramway & Omnibus Co 1878 cable tram, electric trams Box Hill 1891, Nth Melbourne Electric Tram & Lighting Co 1906, Prahran & Malvern Tramways Trust 1910, Hawthorn Tramways Trust 1916-; 1919 Melbourne & Metropolitan Tramways Board took over previous gradually & Fitzroy Northcote & Preston Tramways Trust\*, Footscray Tramways Trust\* (\*=not yet started running), Northcote City Council cable line, cable trams replaced by buses 1940; MTT&T own buses 1925

**Ballarat, Bendigo, Geelong** see tramway section

#### Western Australia

**Perth** 1899 Perth Electric Tramways Ltd>WA Govt Rail 1913 1919 Transport Board, 1949 WA Govt Tram & Ferries Dept-1958, trolley bus 1933-1969, bus 1930-, 1958 Metropolitan (Perth) Passenger Transport Trust<sup>4</sup>

**Fremantle** Fremantle Municipal Tramways & Electric Light Bd 1905-1952, bus Perth-Fremantle 1921, 1926 private buses form Metropolitan Omnibus Co, 1958>MTT

**Rottnerst Is** Rottnerst Is Board bus 1970-

**WA Govt Railways Road Service** (Westrail) bus/coach 1941-

#### NEW ZEALAND<sup>5</sup>

**Auckland** 1860 horse buses, horse trams>electric 1902, 1919 purchased by Auckland City Council, 1924 feeder buses, 1929-1963 Auckland Transport Board, 1964 Auckland Regional Authority, trams ceased 1956, trolley buses

**Christchurch** 1903 private tramways companies, electrified -1954, Christchurch Tramways Board >1953 Christchurch Transport Board, trolley bus 1931-1956

**Dunedin** 1879 private steam tram, 1883 Dunedin City & Suburban Tramway Co horse tram till electrified 1901, ran to 1956, cable tram 1881-1957 (private), bus 1925, trolley bus 1950-1980

<sup>4</sup> 1958-1964 took over Metro Buses P/L Perth 138 buses, Beam Transport Ltd Redcliffe 42, Carlisle Bus Service Welshpool 13, Kalamunda Bus Service 18, United Buses P/L Claremont 20, Emu Buses P/L Shenton Pk 9, WA Govt Tramways & Ferries 141 buses 76 trolley buses, Fremantle Tpt Bd 39, Riverton Bus Service 8, Coogee-Spearwood Bus Co Hamilton Hill 9, North Beach Bus Co Tuart Hill 24, Scarborough Bus Service Mt Hawthorn 41, Metro Tours P/L Perth 1.

<sup>5</sup> Based on several sources

**Eastbourne** Borough Council 1913 purchase harbour ferry co, 1927 purchase bus to Petone  
**Gisborne** tram 1913-1939, bus 1928 Gisborne Municipal Bus Service  
**Invercargill** 1876 horse buses, 1880 horse trams, Invercargill City Transport electric tram 1912-1952, bus 1928 & 1947-  
**New Plymouth** New Plymouth City Transport 1916 electric tram-1954, buses 1920s, trolley bus 1950 (tram one man operation 1921)  
**NZ Railways Road Services** 1926-  
**Palmerston North** PN City Corp bus 1921  
**Timaru** Timaru City Council 1913 take over local private bus  
**Wellington** 1878 steam tram, horse bus 1890s- Corporation Tramways electric 1904-1949, trolley bus -1964, cable tram 1902-1946, bus 1919- Wellington City Transport  
**Whangarei** private bus to 1923 then run for City Council by Northern Motor Bus Service, then private 1968

### THE ASSOCIATIONS<sup>6</sup>

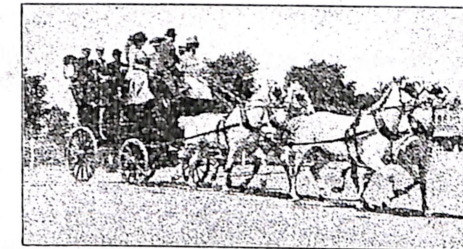
**NSW** Sections of both Commercial Motor Users Assoc & Motor Traders Assoc amalgamated 1928 into Motor Bus Owners Assoc >1932 Feeder Bus Owners Assoc >1942 NSW Omnibus Proprietors Assoc >Bus & Coach Assoc NSW  
 Website: [www.bcansw.com.au](http://www.bcansw.com.au)  
**Vic** Vic Road Passenger Service Operators Assoc 1944>1953 Metropolitan Omnibus Prop Assoc & Charter Div of Vic Road Transport Assoc, renamed Bus Proprietors Assoc Vic 1970 (commercial: Bus Sales P/L)  
 Website: [www.busvic.asn.au](http://www.busvic.asn.au)  
**WA** Omnibus Prop Assoc 1923-1958 (ceased when MTT took over); also WA Road Transport Assoc 1910 (later school bus section)  
 Website: [www.warta.com.au](http://www.warta.com.au)  
**Tas** Tas Road Transport Assoc 1945 (amalgamation of Commercial Motor Users Assoc, Southern Tas Motor Carriers Assoc & OPA)  
 Website:  
**Qld** Qld Bus Prop Assoc 1922 (regions: Cairns & District BOA, Mackay BPA, Toowoomba BOA)  
 Website: [www.qbic.com.au](http://www.qbic.com.au)  
**SA** country OPA 1927-34, country & city OPA 1934-37, 1945 Country Road Passengers Operators Assoc, 1945 Metropolitan OPA (commercial: Transport Equipment P/L)  
 Website: [www.bcasa.asn.au](http://www.bcasa.asn.au)  
**Federal** 1947 Australian Road Transport Federation

*For documents relating to ticketing systems in Australasia see The Sydney Bus Volumes 18, 20 & 22.*

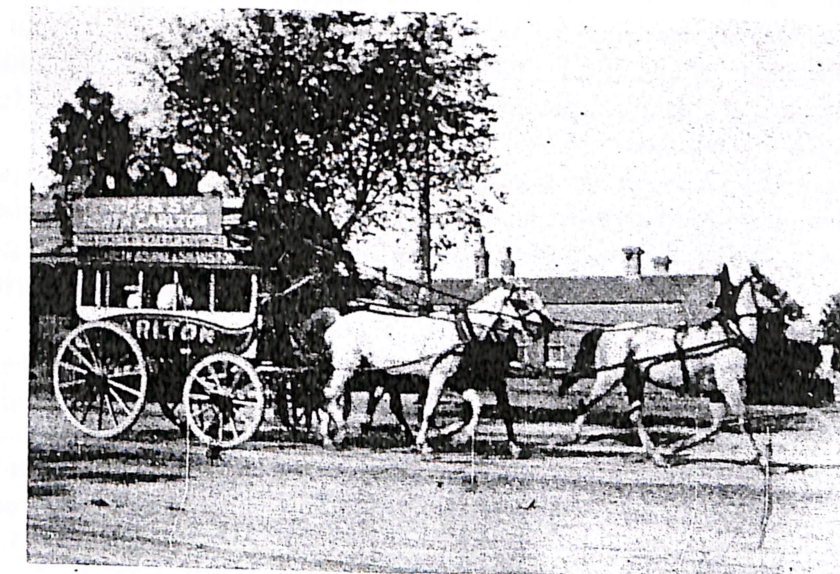
<sup>6</sup> See *Truck & Bus Transportation* Silver Jubilee issue July 1961.

### The Horse Bus

There are no known tickets from the horse bus era (except for NSW). It is tempting, though, to speculate what they might have looked like.



Postcard (Magor Collection)



Three horse bus in Lygon St Carlton, Victoria (Magor Collection)

### Coming in 2005-2007

**Fares Please** an illustrated guide to NSW transport tickets by Robert Merchant & Richard Peck  
 Vol 1 Horse bus, country motor bus available early 2006  
 Vol 2 Sydney private motor bus  
 Vol 3 Government trams & buses  
 Vol 4 More government buses plus ferries, bridges & tolls  
**Tickets Please** by Richard Peck treats the other Australasian states & NZ available mid 2006  
 Vol 1 tram, Vol 2 bus available mid 2006 plus a colour CD  
 Register with us for updates on publication dates.

**The Sydney Bus- the series**

By Richard Peck, PO Box 199 Drummoyne 1470 (rp359@idx.com.au)

All are limited editions, some are now in short supply

1. Horse buses and the coming of the motor bus \$25 (Vol 1-3 sold as a set \$50)
  2. The motor bus to 1932 \$20 (see also volume 15)
  3. The private bus 1932-2004 \$20 (see also volume 15)
  4. "Synthesis": the Motor Traders Association & the Doran Report \$20
  5. "Ticket to Ryde": horse and motor buses in Balmain, Drummoyne, Dundas, Five Dock, Hunters Hill, Marsfield/Eastwood, Ryde \$20
  6. "Shooting through like a...": the motor bus in Alexandria, Botany, Mascot, North Botany, Paddington, Randwick, Redfern, St Peters, Vacluse, Waterloo, Waverley, Woollahra \$30
  7. "The Magor Collection"- Sydney (with Bob Merchant) \$25
  8. "The Magor Collection"- country NSW (with Bob Merchant) \$25
  9. "The Parramatta line of road": horse and motor bus in Annandale, Ashfield, Auburn, Burwood, Concord, Dundas, Enfield, Glebe, Granville, Leichhardt, Lidcombe, Homebush, Strathfield \$25
  10. "From the driver's seat..." based on the manuscript of Jack Maddocks, edited by Richard Peck. Lots of stories about the industry. Buses with red roofs, Saint & Sons, Cotrill's, Kirklands, Iffland, Grafton Busco, Sth Sydney Bus Co, Fitzgibbons, Bardsley, White, Woodward & Purkiss, Lismore, Glenister & Mackenzie, Stewart, McVicar, JA Gilbert & much more history. \$30
  11. "The green lines": the motor bus in Bexley, Canterbury, Darlington, Erskineville, Hurstville, Kogarah, Marrickville, Newtown, Petersham, Rockdale, Sutherland \$30
  12. "A thousand miles from care": in East St Leonards, Hornsby, Kuring-gai, Lane Cove, Manly, Mosman, North Sydney, St Leonards, Willoughby, Warringah, Kuring-gai, Hornsby \$25
  13. "Miscellany": Metropolitan Transit Commissioners and more on the horse bus and motor bus to 1941 Metrop. Transit Commissioners 1873-1900, fares 1861, 1929 & 1941 reports, Kurnell, Clark's timetables, pictorial & much more. \$25
  14. "Parklea forward": the motor bus in Baulkham Hills, Cabramatta & Canley Vale, Fairfield & Smithfield, Holroyd, Liverpool, Blacktown, Prospect & Sherwood, also Newcastle; company information and a cumulative index to the series. \$25
  15. "Government Bus Routes in Sydney & Newcastle" (by Greg Travers) \$45
  16. "the routes of Sydney's private buses 1911-1931" \$25
  17. "Unfinished Symphony" synthesis of council information to 1932 \$25
  18. "Trams versus buses" Australasian comparisons 1910-1930s \$25
  19. "They came & went" Sydney private bus operators & routes 1911-1925 \$20
  20. "The Doran Report & the 1930 Transport Act" \$25
  21. "Ministry of Transport files 1930-2 & the State Transport Co-ordination Board" \$25
  22. "Newcastle, ferries & tolls" \$20
  23. "What's in a name?" an archives guide & Other Matters \$20
- \* "Bus operators in the NSW country" (by Vic Hayes & R Peck)
  - \* updating the 1925 list (part of Vol 3, by Robert Henderson) (coming)
  - \* "The Newcastle bus" including councils 1918-1938 (coming)

Tickets Please!  
Version August 2006

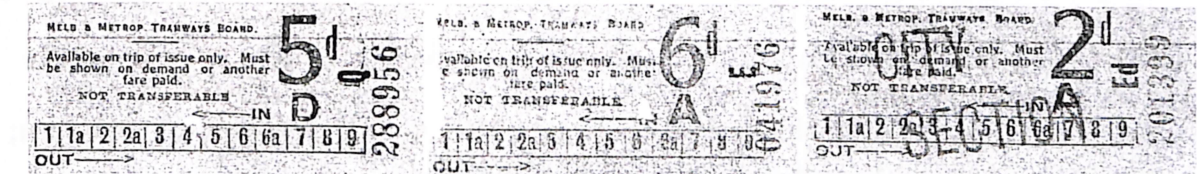
Bus

2: Victoria

**VICTORIA**

**Melbourne & Metropolitan Tramways Board Omnibus Services**

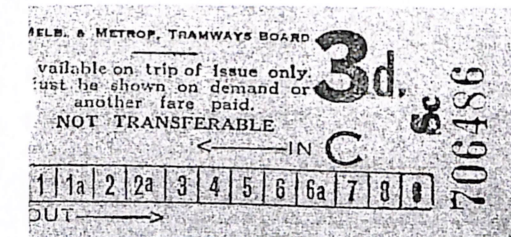
Commenced 1925. A 1980s map shows 17 services in the 201-207 range. Private bus routes used numbers 400-999.



Black on coloured paper flimsy, adverts on back

1d blue, 2d green, 3d dark pink, 4d off white, 5d pink, 6d printed in red/off white, 7d green/off white; 2d green with red "city section" and "Ed" (1956)

Note: 6d listed on Ebay in 2006 as 1947 St Kilda bus-tram ticket.



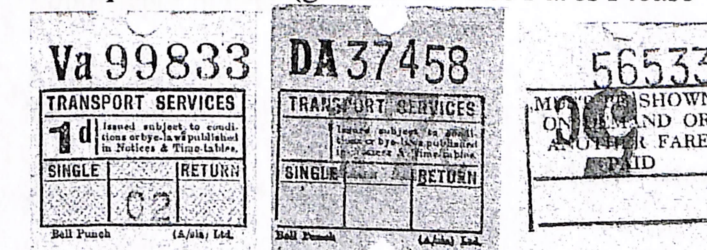
Different value numerals, 3d black/light pink

It is believed Ticket Issue Machines were also used on MMTB buses. For part or full hospital or soldier travel cards by bus, see the tram section where tram & bus are listed.

**Other bus companies in Victoria**

When no tickets are shown the information is from Ian Manning, "Urban bus tickets in Victoria", Fleetline, Dec.1981. The machines were Almex, TIM (Ticket Issue Machines), Setright Speed & Solomatic<sup>1</sup>. "Titled" means company name included, "stock" means no name or generic (eg "Passenger Services").

**Transport Services (generic: see also Fares Please Vol.1)**



titled Ultimate

untitled Solomatic

Ultimate black/coloured board with red pattern

Small value: 1d off white, 3d lilac, 4d green, 5d orange, 6d buff, 7d grey, 8d grey, 10d brown, 1/- mauve-grey, 1/2 lilac, 1/3 lilac

<sup>1</sup> These are described in Fares Please Vol.1.