

D.W. LEES

MELBOURNE AND METROPOLITAN TRAMWAYS BOARD

ENGINEERING DEPARTMENT

PLANNING BRANCH

C.B.D. EMPLOYMENT DENSITIES

JULY 1974

C.B.D. EMPLOYMENT DENSITIES.

This report involves a comprehensive examination of the results of the Melbourne City Councils 1972 Employment Survey in order to determine the spatial distribution of employment and land use in relation to the C.B.D.'s Public Transport Network.

The results of these analyses have been presented by means of graphs and diagrams. It was determined that the centroid of employment within the C.B.D. was between Elizabeth Street and Queen Street, near their intersection with Little Collins Street.

A graph has also been included to show the relationship of building approvals, other than houses and flats, between the City of Melbourne, the Total Metropolitan Area and the State of Victoria from 1961 to 1975.

To complete the Study, "Journey to Work" information from the 1971 Census has been used to show the Municipal origin of those people working in designated C.B.D. blocks.

INDEX

PAGE

Introduction

A

Inner C.B.D. - Total Employment
Employees per half block

(Map)

1

Inner C.B.D. Employees within one block of each
East-West Street

(Graph)

1A

Inner C.B.D. Employees within one block of each
North-South Street

(Graph)

1B

Inner C.B.D. - Total Floor Space
Floor space per half block

(Map)

2

Inner C.B.D. - Manufacturing
Employees per half block

(Map)

3

Inner C.B.D. - Retail
Employees per half block

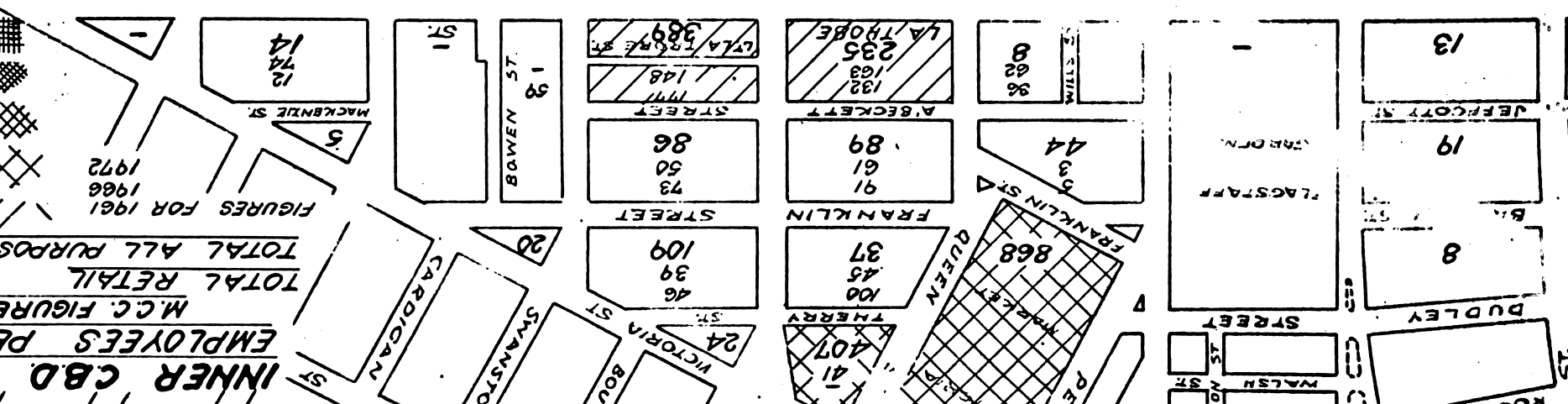
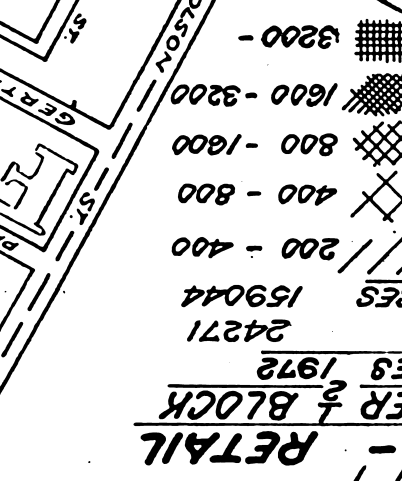
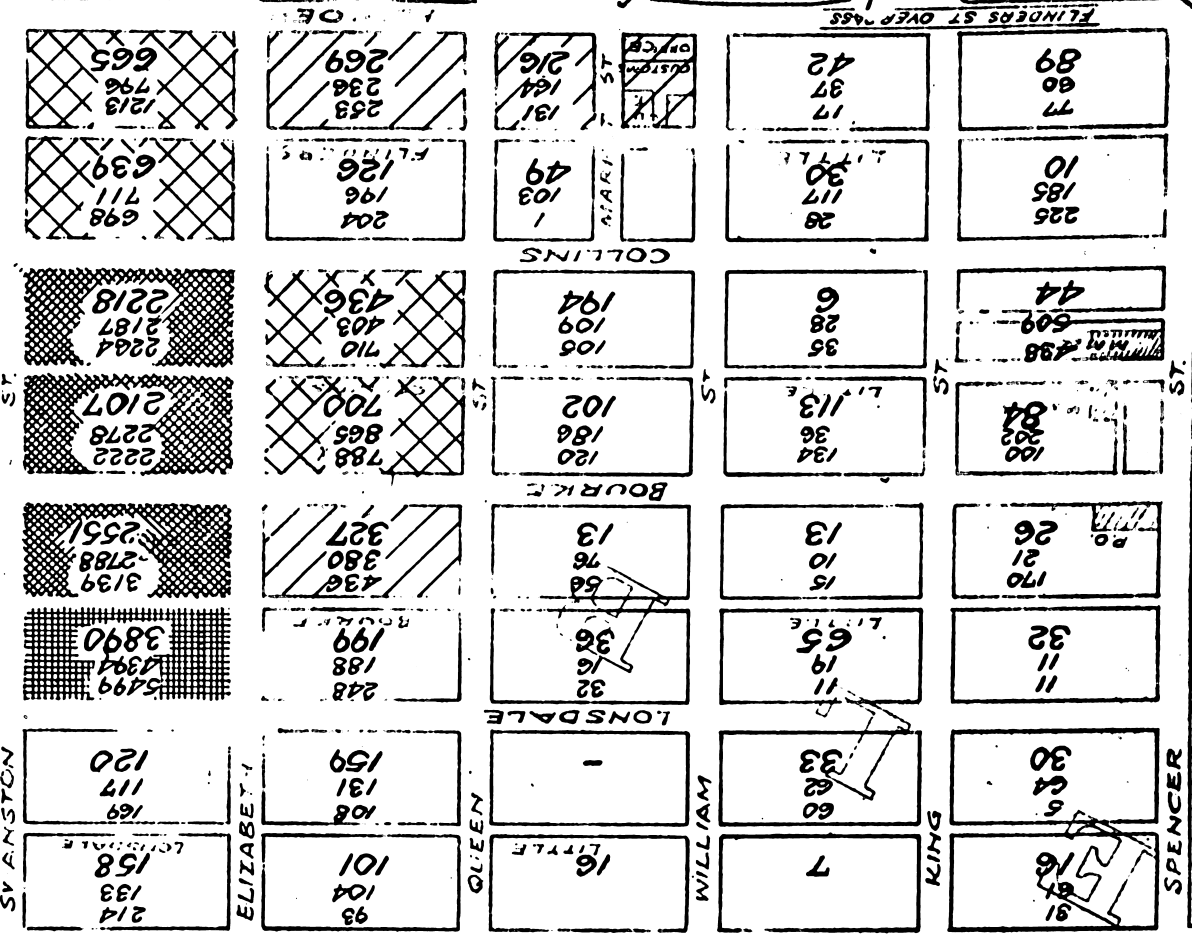
(Map)

4

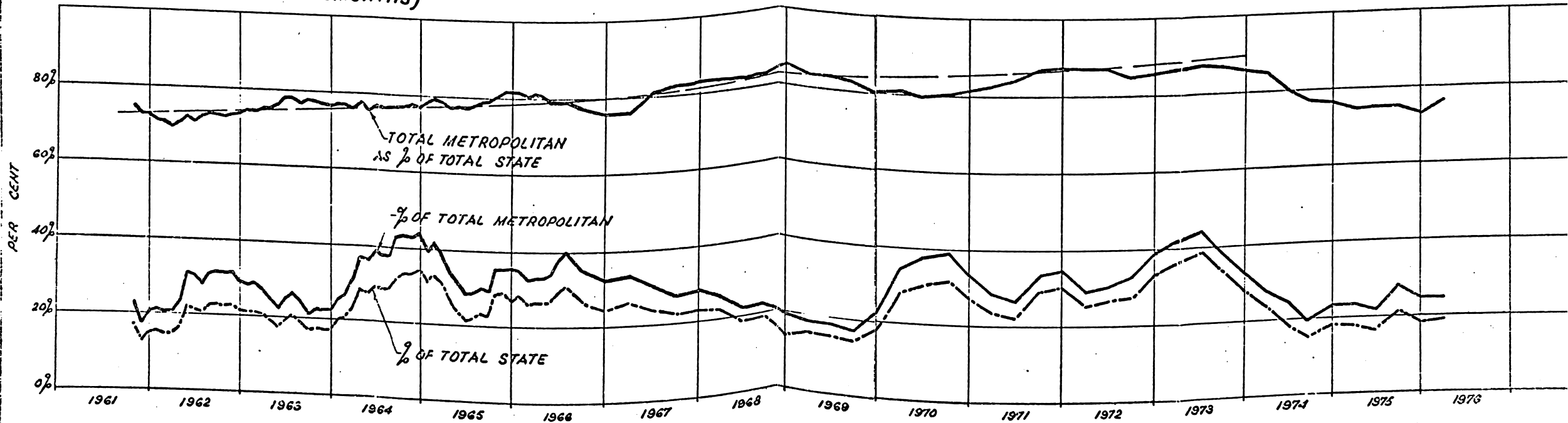
INNER C.B.D. - RETAIL
EMPLOYEES PER 5 BLOCK
M.C. FIGURES 1972
TOTAL RETAIL
24271
TOTAL ALL PURPOSES 159044

FIGURES FOR 1961
 200 - 400
 400 - 800
 800 - 1600
 1600 - 3200
 3200 -

78 85 33	93 81 48	327 364 432	665 796 1213	269 236 253	216 164 131	42 37 17	89 60 77
47 235 88	121 131 131	598 285 595	639 711 698	126 196 204	49 103 1	28 30 117	225 185 10
87 53 57	280 257 414	222 626 578	2218 2264 2187	436 403 710	194 109 106	6 28 35	44 509 438
225 146 298	320 182 283	490 532 500	2107 2222 2278	700 865 788	102 186 120	113 36 134	84 100 203
231 294 296	461 687 364	2028 1968 2726	2551 3139 2788	327 436 380	13 76 58	13 10 15	26 21 170
107 106 133	125 199 66	260 242 301	3890 4394 5499	199 188 248	36 16 32	65 19 11	32 11 11
11 14 13	48 78 63	-	120 117 169	159 131 108	-	33 62 60	30 64 5
-	48 80 56	-	214 133 158	93 104 101	16 LITTLE	7	31 16 5
-	14 74 12	-	389 389 148	235 132 163	8 62 %	-	13
-	14 74 12	-	86 50 73	89 61 91	44 3 3	-	19
-	46 39 109	-	46 39 109	37 45 100	868 MARKET FRANKLIN ST	-	8



**BUILDING APPROVALS OTHER THAN HOUSES & FLATS
 RELATIONSHIP BETWEEN CITY OF MELBOURNE, TOTAL
 METROPOLITAN AREA & STATE OF VICTORIA
 (BASED ON MOVING ANNUAL TOTALS OF ESTIMATED COSTS
 FOR PREVIOUS 12 MONTHS)**



*Early
 Paulson
 5/2/6*

*The cbd (or at least the
 city of Melbourne) is still
 getting about 20% of the
 money spend on
 non-residential
 buildings in Victoria*