

STORMING ST KILDA BY TRAM



BY PAUL DAVIES

30

Storming St. Kilda By Tram

Paul Davies



Current Theatre Series
published by Currency Press, Sydney
in association with TheatreWorks, Melbourne

CURRENT THEATRE SERIES

First published in 1991 by
Currency Press Pty. Ltd.,
P.O. Box 452 Paddington, N.S.W. 2021.
Australia, in association with
TheatreWorks Limited, Melbourne

Copyright © Paul Davies 1991

This book is copyright. Apart from any fair dealing for the purpose of private study, research or review, as permitted under the Copyright Act, no part may be reproduced by any process without written permission. Inquiries concerning publication, translation or recording rights should be addressed to the publishers.

Any performance or public reading of *Storming St. Kilda By Tram* is forbidden unless a licence has been received from the author or the author's agent. The purchase of this book in no way gives the purchaser the right to perform the play in public, whether by means of a staged production or a reading. All applications for public performance should be addressed to the author, c/o TheatreWorks Limited, P.O. Box 1205, St. Kilda, 3182, Victoria.

National Library of Australia
Cataloguing-in-Publication data
Davies, Paul 1949-
Storming St. Kilda By Train

ISBN 0 86819 269 4

I. TheatreWorks (Eastern Suburbs Community Theatre Company). II. Title (Series: Current Theatre Series).

A822'.3

Typeset by Allette Systems P/L, Sydney.
Printed by Bridge Printery, Sydney.



This work was assisted by a Writer's Fellowship from the Australia Council, the Federal Government's arts funding body.

Currency's creative writing program is assisted by the Australia Council, the Federal Government's arts funding and advisory body.

This play is dedicated to the memory of Carolyn Howard (1952-1990) who rode with me on the original tram trip that inspired it all and whose energy, talent, and enthusiasm helped bring TheatreWorks into being and therefore made this work possible.

Storming St. Kilda By Tram was originally produced by TheatreWorks as "Storming Mont Albert By Tram" on the No. 42 route in 1982 and developed in collaboration with director, Mark Shirrefs, and the following cast:

ALICE	Mary Sitarenos
DANNY	Peter Sommerfield
SAMANTHA	Hannie Rayson
CATHY	Carolyn Howard
NIGEL	Peter Finlay
TERRY	Tony Kishawi
MORRIS	Paul Davies
COPS	Graeme Stephen
	Brett Stewart

CHARACTERS

ALICE KATRANSKI, a connie, late twenties
SAMANTHA HART-BYRNE, a Brighton housewife
DANNY O'ROURKE, a former political science lecturer 50ish
CATHY WATERMAN, a mother of two, escort agency worker, 35
NIGEL DAVIDSON, a Sydney "filmmaker" 37
TERRY MEAGHER, a punk, mid-twenties
MORRIS STANLEY, an overzealous ticket inspector, 40
CONST. WENDY RHODES, a policewoman 30-odd

SETTING

The play is performed aboard a Melbourne tram as it travels from St. Kilda to the city and back. The audience ride as ordinary passengers while the characters get on and off at various stops. Although the script is written in sequential form the production is designed in such a way that conversations often occur simultaneously at different ends of the tram. Also, because the tram's speed may vary according to changing traffic flows, random events, and the propensities of different drivers, certain sequences may be extended or deleted in the course of any one trip.

ACT ONE

Outward Journey

A Number 69 tram arrives at the St. Kilda Beach terminus in front of Luna Park. Its only passenger is DANIEL O'ROURKE. He lies asleep in a dirty old overcoat, clutching an open bottle of sherry. His head is tilted sideways with one ear pressed to a transistor radio. He wears a knitted woollen cap in the colours of the Collingwood Football Club, 'The Magpies'. At his feet is a battered airline bag. Understandably, people tend to avoid him as they get on. They're welcomed aboard by the connie, ALICE KATRANSKI, who greets everyone personally, delighted to see them.

ALICE: *[to the passengers]* Hi. Come on in. Great to see you. Welcome aboard everybody. Thanks for coming. Grab a seat. We'll get going soon.

[She helps the older folk up the step, making sure they're comfortable and that they've all got a seat. Eventually, when people are settled...]

[beaming at them] G'day, everybody, I'm Alice Katranski. I'm your connie for the night and I'm here to make sure you all have a wonderful time. On behalf of Driver Ky Van Tong I'd like to welcome you aboard Tram number 938 an SW Class Car travelling from St. Kilda to the City and back. Weather along the route is expected to be fine with just the possibility of a shower or two along Glenferrie Road and some turbulence outside certain pubs in South Yarra. Our expected arrival time in Swanston Street is 9.07 pm. Thank you for travelling with the Met and just sing out if you need anything - travel sickness pills, valium, spare kimbies for the baby, that sort of thing... OK ?

[She grabs the cord about to signal the driver to start the tram.]

So is everybody ready?

[But she's suddenly distracted by a fit of coughing coming from DANNY's end. He looks around to spit,



Paul Davies



Mark Shirrefs

Paul Davies - Writer

Paul first came to Melbourne in 1974 in time to be the last script editor on *Homicide* and the first one on the *Sullivans*. Subsequently Paul wrote television drama for several series including *Rafferty's Rules* and *Against the Wind*. Film credits include *Exits, Traps*, and *All That Is Solid*. In 1981 Paul joined TheatreWorks and wrote six of the Company's most successful plays to date including *Storming St. Kilda By Tram*, *Breaking Up in Balwyn*, *Living Rooms* and *Full House - No Vacancies* and *On Shifting Sandshoes*. Paul won the 1988 AWGIE Award for both Best New Australian Play and Best Community Theatre Play with *On Shifting Sandshoes* and *Storming St. Kilda By Tram*.

Mark Shirrefs - Director

Mark Shirrefs' work as a director often takes him into non-theatrical venues. His productions for TheatreWorks have included a tram and a boat, and, for the Lawyers Guns and Money team, the No. 1 Melbourne Magistrates' Court and the St. Kilda City Council Chambers. Mark is also the co-author of the award winning children's television series *The Girl From Tomorrow*. He is returning to TheatreWorks for his third production of *Storming St. Kilda By Tram*.

Susan Weis - Designer

Susan has worked extensively in independent film, video and theatre production. Her film credits include the John Hughes' docu-drama *Traps* and *All That Is Solid*. She co-produced *Tea and Pictures*, a film based on the lives of Thea Proctor and Margaret Preston. Susan has been involved with TheatreWorks since 1983 when she worked on *Breaking Up in Balwyn*. Since then she has worked as designer and production manager on *Herstory*, *Living Rooms*, *Storming St. Kilda By Tram* (1988), *Last Train To St. Kilda?* and *On Shifting Sandshoes*. In 1989 Susan co-directed *Hairpin Bends* for TheatreWorks.

TheatreWorks

TheatreWorks
presents

STORMING ST. KILDA BY TRAM

by Paul Davies

CREDITS

ARTISTIC DIRECTOR	Robert Draffin
DIRECTED BY	Mark Shirrefs
PRODUCTION MANAGER	Susan Weis
COSTUME DESIGN	Susan Weis
ADMINISTRATION	Wolfgang Wittwer

CAST

ALICE CRONIN	Sioban Tuke
DANNY O'ROURKE	Cliff Ellen
SAMANTHA HART-BYRNE	Carole Patullo
KATHY WATERMAN	Taya Straton
NIGEL DAVIDSON	Jon Concannon
TERRY MEAGHER	Louis Dingemans
MORRIS STANLEY	Roger Selleck
CONSTABLE WENDY RHODES	Sally-Anne Upton

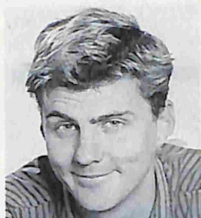


HEART HEALTH

FUNDED BY THE VICTORIAN HEALTH FOUNDATION
FOR THE NATIONAL HEART FOUNDATION



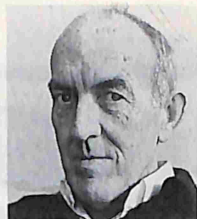
The 1991 Production of "Storming St. Kilda By Tram" is proudly funded by THE VICTORIAN HEALTH FOUNDATION for THE NATIONAL HEART FOUNDATION.



Jon Concannon



Louis Dingemans



Cliff Ellen



Carole Patullo

Jon Concannon - Nigel Davidson

Jon graduated from the Victorian College of the Arts in 1986. He has since worked in film and television. His film credits include *Boulevard of Broken Dreams*, *Lover Boy* and *Jigsaw*. Jon played the part of Celeste's boyfriend in *Nancy Wake* and Bates in *All the Rivers Run II*. He has appeared in most Australian television series including *House Rules*, *The Flying Doctors*, *Rafferty's Rules* and *Acropolis Now*. He most recently appeared as Bill Sampson in *Embassy*.

Louis Dingemans - Terry Meagher

After completing his Bachelor of Arts in 1980 Louis worked in children's theatre, Theatre in Education and community theatre for four years including six months with *TheatreWorks Troupe* in 1984. In 1985 he co-founded the vaudeville musical quartet *The Cabbage Brothers* which has since been playing to capacity audiences throughout Australia. They have appeared at all major Melbourne festivals and television comedy and variety shows including *Hey Hey It's Saturday*, *The Gerry Connolly Show*, *The Comedy Company* and *The Ray Martin Show*. In 1988 *The Cabbage Brothers* took out the Hackney Empire Mineral Water Award at the Edinburgh Festival.

Cliff Ellen - Danny O'Rourke

Cliff has appeared regularly on the Melbourne stage for 20 years. Previous *TheatreWorks* appearances include *Living Rooms*, *Why People Go To Traffic Accidents*, *Storming St. Kilda By Tram* (1988), and *Perfecting My Nature Strip*. Appearances for Playbox include *Bulsh*, *Ball Boys*, *Duck Variations*, *Unsuitable for Adults*, *Away* and *The Secret House*. Appearances for the Melbourne Theatre Company include *Top End* and *See How They Run*. Other credits include *Norm and Ahmed*, *No Worries*, *Blood Brothers*, *One Day of the Year* and *Munjong*. His television credits include *Locusts and Wild Honey*, *The Sullivans*, *All the Rivers Run*, *Fast Lane*, *Man and Boy*, *A Matter of Convenience* and *Skirts*. Film appearances include *Squizzy Taylor*, *Phar Lap*, *The Bodyguard*, *Mr B Says No*, *The Man in the Blue and White Holden*, *Proof* and *Garbos*.

Carole Patullo - Samantha Hart-Byrne

Carole has worked extensively in theatre, film, comedy and cabaret since 1980. Her theatre credits include *The Dream Play*, *White Hotel* and *Good Night Sweet Dreams* with Jenny Kemp, *Our Antigone* and *Stacks On* at Arena Theatre Company, *Bed of Ruses* at Playbox, and *Dead Set Straight* for WEST Theatre Company. Carole has been a member of the successful "4x4's" Theatresports team since 1986. She performed in *The Trial of Malcom X* for the Lawyers Guns and Money team during the 1987 Comedy Festival and again in *A Hard Act to Follow* during the 1988 Festival. Since 1987 Carole has appeared as half of the comedy duo *The Flat Whites*.



Roger Selleck



Taya Straton



Sioban Tuke



Sally-Anne Upton

Roger Selleck - Morris Stanley

Roger graduated from the Victorian College of the Arts in 1982. From 1983 to 1986 he toured high schools with *Confessions From the Male*, *Juliet and Romeo* and *War'N'Pieces*. Since 1987 Roger has been playing Toad in the FEEIP! production of *Wind in the Willows*, and in 1988 he played Bottom in Glen Elston's second outdoor production of *A Midsummer Night's Dream*. This is Roger's second appearance for TheatreWorks, having previously appeared in *Full House - No Vacancies* during the 1989 Melbourne Comedy Festival.

Taya Straton - Cathy Waterman

Taya graduated from the Victorian College of the Arts in 1986. Her theatre credits include *A Lie of the Mind*, *Shadow of a Gunman*, and *Servant of Two Masters* for the Melbourne Theatre Company, and *The Pub Show* and *Not Waving* for TheatreWorks. Most recently Taya appeared in the *100 Year Ambush* at the Victorian Arts Centre and in *Break of Noon* for the Thalia Theatre Company at the Wharf in Sydney. Her television credits include appearances on *Prisoner*, *A Country Practice*, *Rafferty's Rules*, *Prime Time*, *Inside Running* and *The Flying Doctors*. Taya also appeared in two feature films *Slate and Wyn* and *Blanche McBride* and *Higher Than High*.

Sioban Tuke - Alice Cronan

Sioban graduated from the Victorian College of the Arts in 1987. Her theatre credits include *A Moments Hesitation As She Changes the Expression of Her Face*, *A Slow Exit - He Is Going to Die* and *Morning Becomes Electra* with Peter King, *A Piece of the Pie* for Arena Theatre Company and most recently *Catholic Schoolgirls*. Sioban has performed extensively in comedy and cabaret since 1984. Apart from her stand-up comedy and comedy impro shows, she is best known for her television appearances on the *Eleventh Hour* (HSV 7), *While You're Down There* (ABC-TV) and *The Comedy Company* (ATV 10). Sioban also appeared in *A Country Practice* and in the feature film *Bachelor Girl*.

Sally-Anne Upton - Constable Wendy Rhodes

Sally-Anne has worked in theatre, music comedy and cabaret for the past 10 years. Between 1982 and 1987 she performed with the Murray River Performing Group and appeared with the popular cabaret act *The Spangles*. Since 1988 Sally has been a member of the highly successful musical comedy act *The Natural Normans*. They have enjoyed numerous seasons at the Last Laugh Theatre Restaurant and Le Joke, plus sell-out seasons during the Melbourne International Comedy Festival, the Adelaide and Perth Festivals, and at the 1989 Edinburgh Festival. Sally-Anne performed on *The Big Gig* and with *The Comedy Company* and most recently appeared on *Skirts* for Channel 7.

CURRENCY PRESS
in association with
TheatreWorks
Current Theatre Series

Travelling by public transport will not be the same again once you have stormed St. Kilda by tram. In the capable hands of Alice Katranski, your conductress on an incident-filled journey to Swanston Street, characters arrive at every stop. There is high drama, low comedy and abundant entertainment.

PAUL DAVIES has worked as a script editor and has written many hours of television, and feature screenplays. Since 1982 Paul has been a member of TheatreWorks' Artistic Directorate. Working as both a writer and an actor, he helped pioneer and develop "location theatre" and wrote most of TheatreWorks' non-theatre plays: *Storming Mont Albert* (and later *St. Kilda By Tram*, *Breaking Up in Balwyn*, *Living Rooms*. His other plays for TheatreWorks include *Last Train To St Kilda?* and last year's acclaimed *On Shifting Sandshoes*, named "comedy of the year" by Chris Boyd, the *Melbourne Times*, and *Full House/No Vacancies*.

THEATREWORKS is a Company that takes risks! It performs only original Australian plays and in its nearly ten years of operation, has launched some twenty new works. As part of its Artistic Policy TheatreWorks also explores non-theatre spaces and has pioneered "Location Theatre." TheatreWorks has performed plays on trams (*Storming Mont Albert by Tram/Storming St. Kilda by Tram*), on a river boat (*Breaking Up in Balwyn*), in a pub (*The Pub Show*), in the outdoors (*Fabulous Tales From the Horse's Mouth*), and in an historic mansion (*Living Rooms*, *Full House/No Vacancies*). The Company's work is characterised by innovation, humour, and a strong sense of the physical. It aims to be celebratory, disturbing and provoking.

CURRENCY'S CURRENT THEATRE SERIES consists of Australian plays published with program inserted, and sold during theatre seasons before becoming available in the bookshops. The aim of the series is to promote and encourage new dramatic writing and to make it accessible at a low price to theatregoers and the public.