

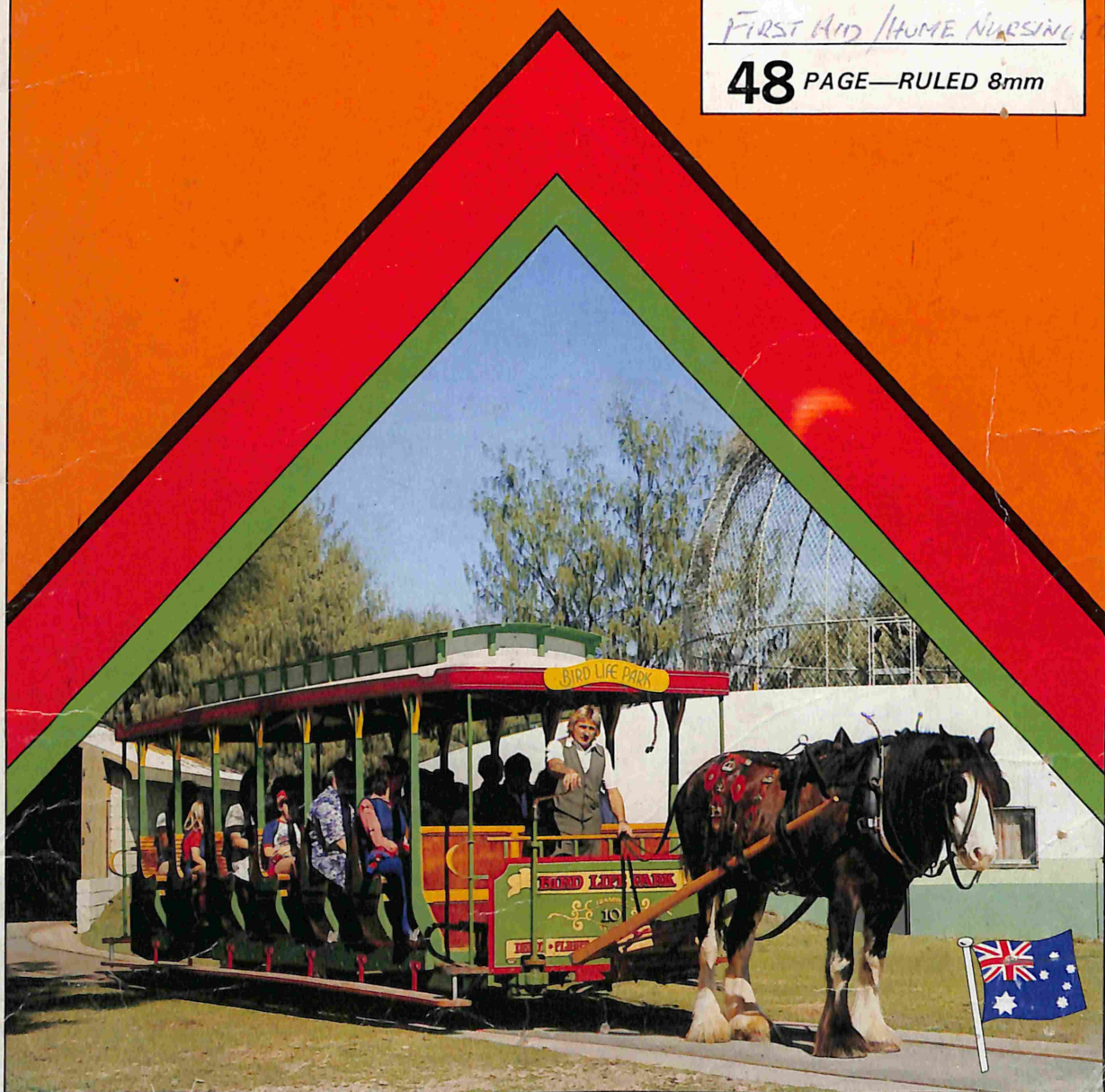
# GORDON

## Exercise Book

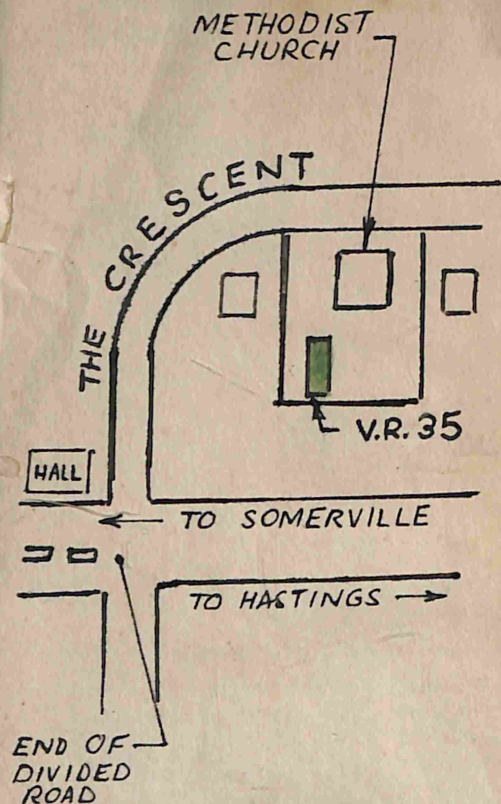
BRIGHTON - REDCROSS

FIRST AID / HOME NURSING CLASS

48 PAGE—RULED 8mm

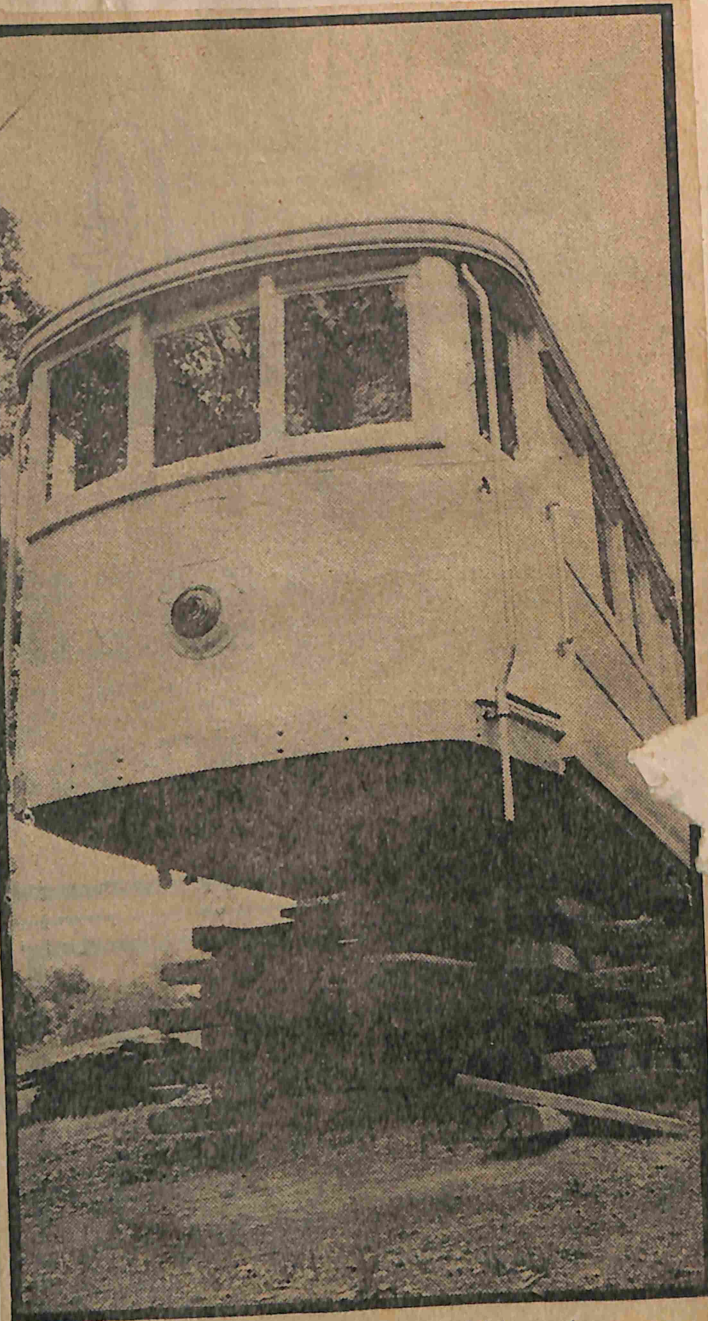






**LOCATION OF VICTORIAN  
RAILWAYS TRAM NO 35  
AT THE METHODIST CHURCH  
TYABB**

(BODY IN USE AS SUNDAY SCHOOL)  
(CLASSROOMS, FOR WHICH  
DROP-CENTRE HAS BEEN ENCLOSED)  
(AND PARTITIONED INTO TWO ROOMS)



ONCE she ran between St. Kilda railway station and Brighton Beach on the Electric Street Railway. Today Victorian Railway tram-car No. 3 sits on railway sleepers in a Yarrambat paddock, awaiting her final home at Bylands.

# End of the line

**Then  
and  
now**

**BRIGHTON - BOUND** passengers from Flinders St. are transferring from the gas-lit trains at St. Kilda Station.

A white-collared conductor is calling: "Hurry on, please, for the electric car!"

At the height of the peak-hour rush, several hundred passengers clamour aboard the awaiting trams and the procession moves across Fitzroy St.,

up Grey St. to the Village Belle, and bound for Brighton Beach.

Into Mitford St. and through the reclaimed Elwood township along Ormond Road, the fleet gathers pace down St. Kilda St., passing the depot on the Head St. corner, and reaching the Brighton terminus at Grosvenor St.

The five-mile journey has just taken 29 minutes. The St. Kilda-to-Brighton electric line is new born and effecting the

first through-route round the far reaches of Port Phillip to bayside Brighton.

Any previous connection between the two, involved a rail loop through Windsor and Elsternwick.

Today, some 66 years on, a veteran of the now-defunct St. Kilda Station-to-Brighton Beach Electric Street Railway, to give it the full title, is sitting in the middle of a Prahran backgarden.

entered service between May and July of the same year.

Mr Prentice said his tram was part of a replacement fleet, built by the Adelaide crowd, after a fire in March, 1906, destroyed the depot and reduced the entire fleet of 17 trams to a heap of frames.

Number 20 served the public for five years till the toastrack design became obsolete and was replaced.

## Enthusiast

The owner, Mr Bob Prentice, an optician, describes it as a "toastrack", late of Elwood, and of a 1913 vintage.

In its present suburban setting, old Number 20, still retains the original color scheme of chocolate, cream and red.

Mr Prentice, an avid transport enthusiast, says he bought the tram in 1959, when the line officially closed.

It served its last days (40 years to be exact) as a breakdown car confined to the Elwood depot.

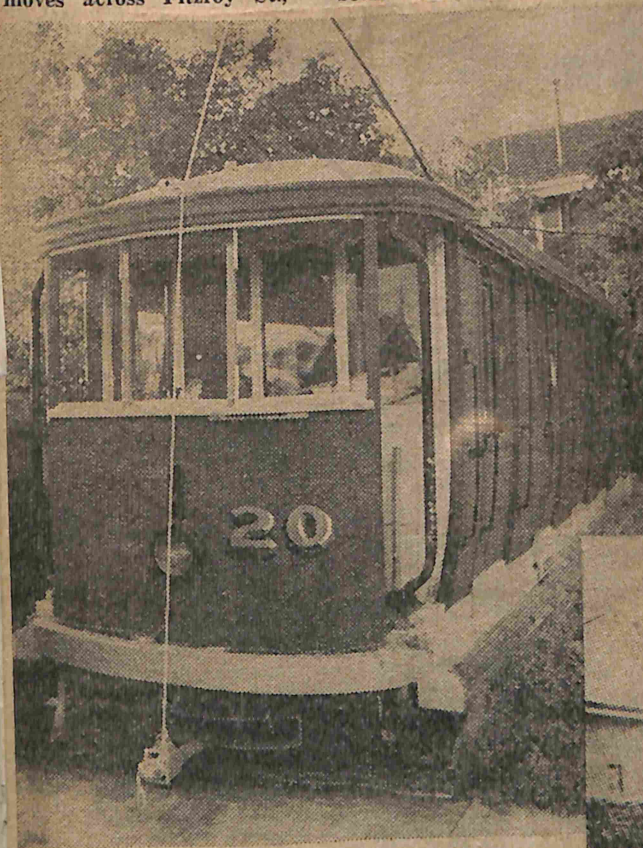
Number 20 was built by Pengelley & Co. of Adelaide in 1913, and

## Requested

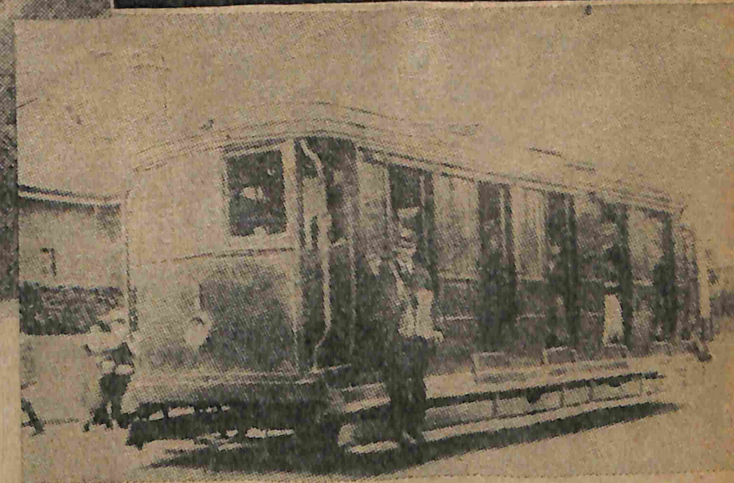
Mr Prentice said that the toastrack design — closed cross bench seats with no centre aisle — meant the conductor had to move along the narrow, running board to enter the compartments from the outside and collect his fares.

The trams had gas-light fittings made of brass and displayed a notice to the occupants: "Please hand as nearly as possible the exact fare to the conductor. Passengers are requested to give early notice where they desire to be set down."

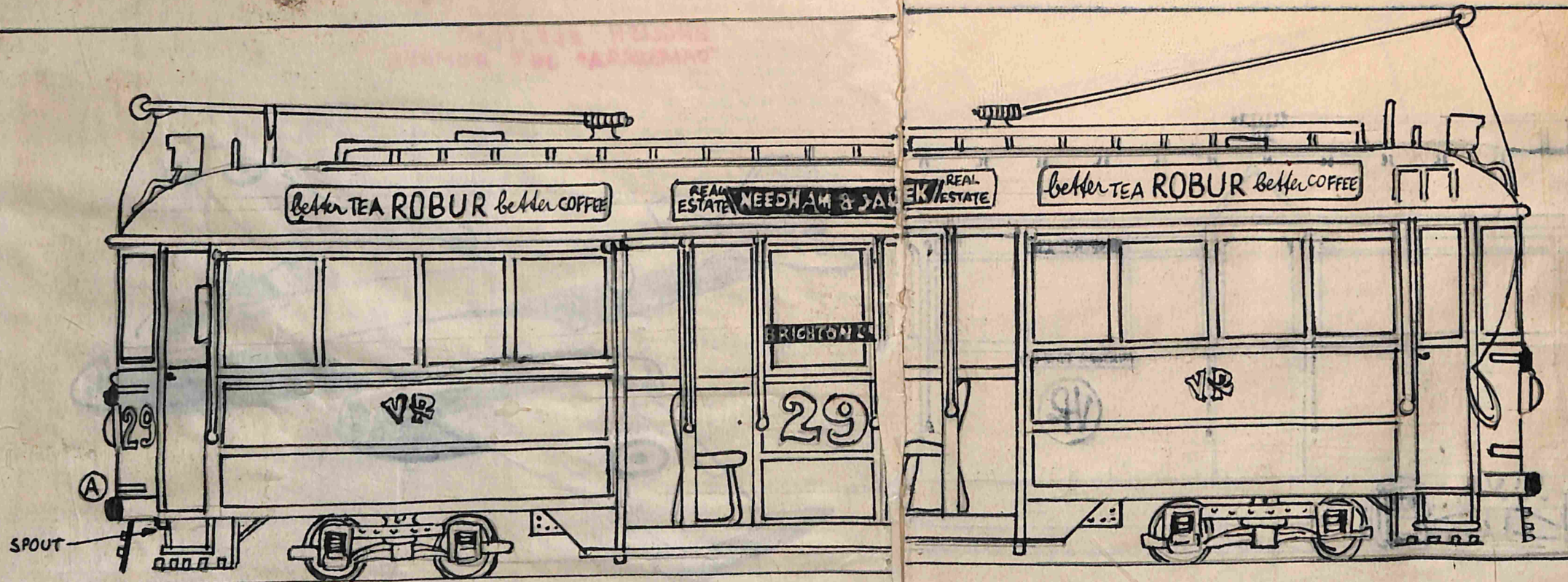
—STEPHEN FOLEY



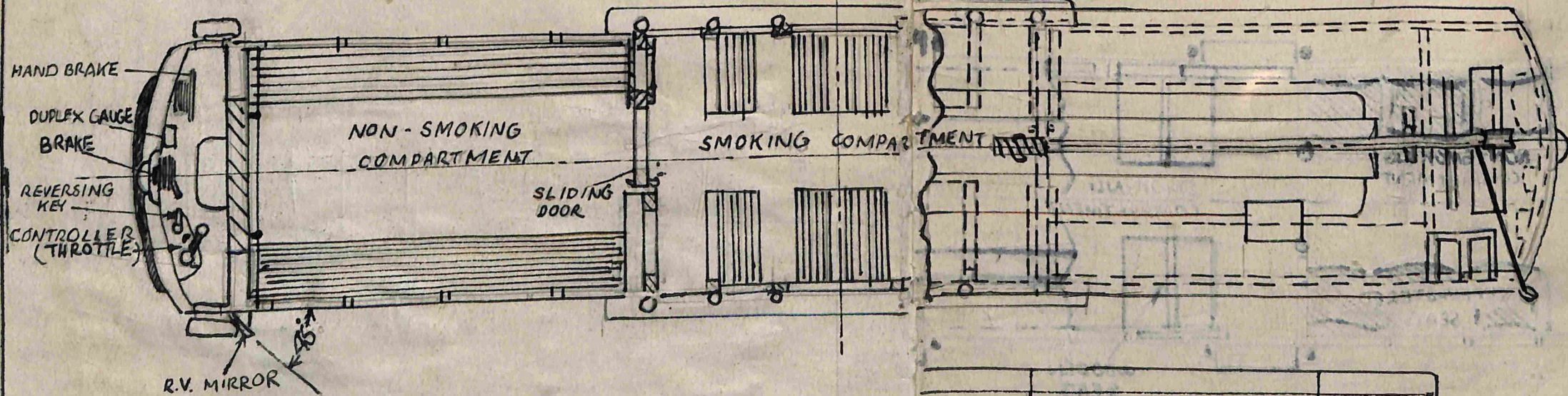
ABOVE: "Toastrack" tram No. 20 has come to rest in the Prahran backyard of Mr Bob Prentice. Right: One of the "toastrack" fleet with its conductor, who had to scramble along the footboard to collect fares.





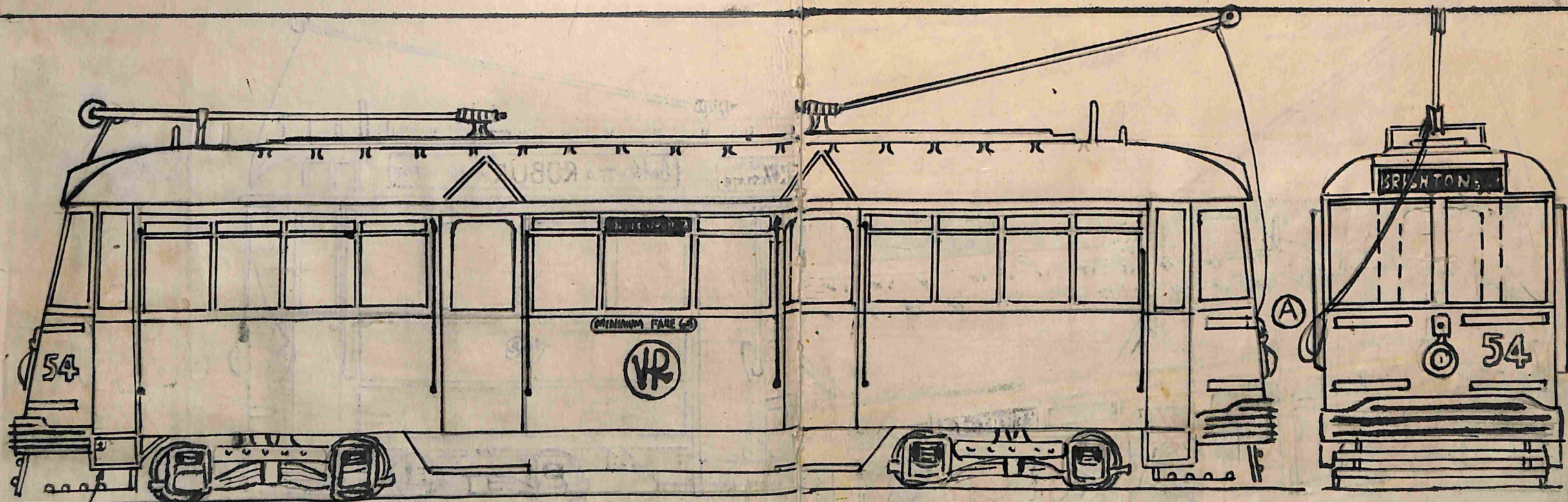


# VICTORIAN RAILWAYS ELECTRIC TRAMWAYS



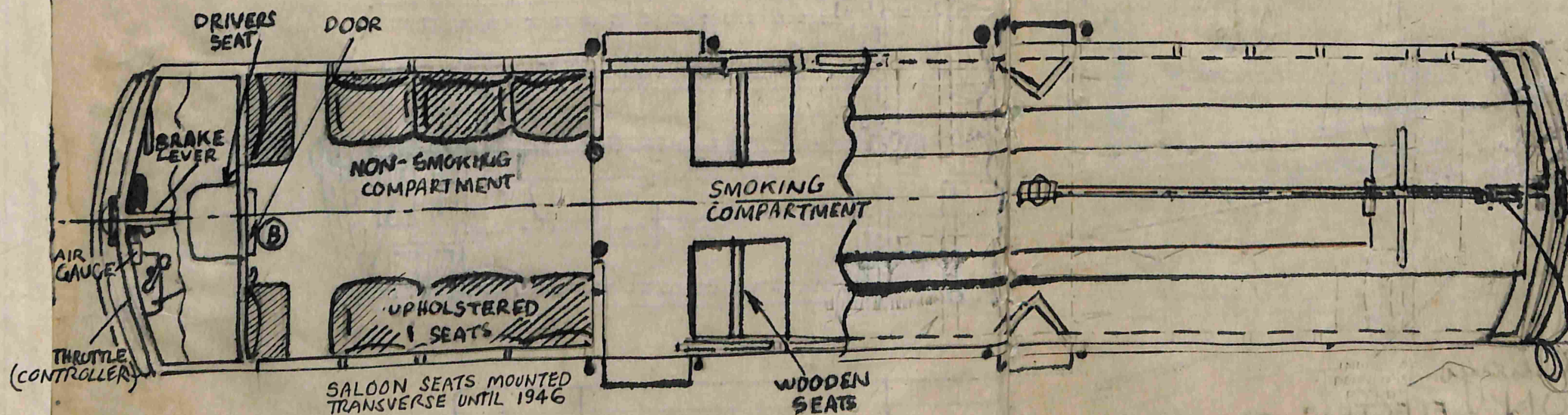
A	WHITE LINES ADDED	30-10-55	Car No. 29	DRAWN D.H. FROST DRWG NO RT-1
ISSUE NO.	AMENDMENT	CHANGE MADE		





STEP

# ST KILDA - BRIGHTON ELECTRIC TRAMWAY

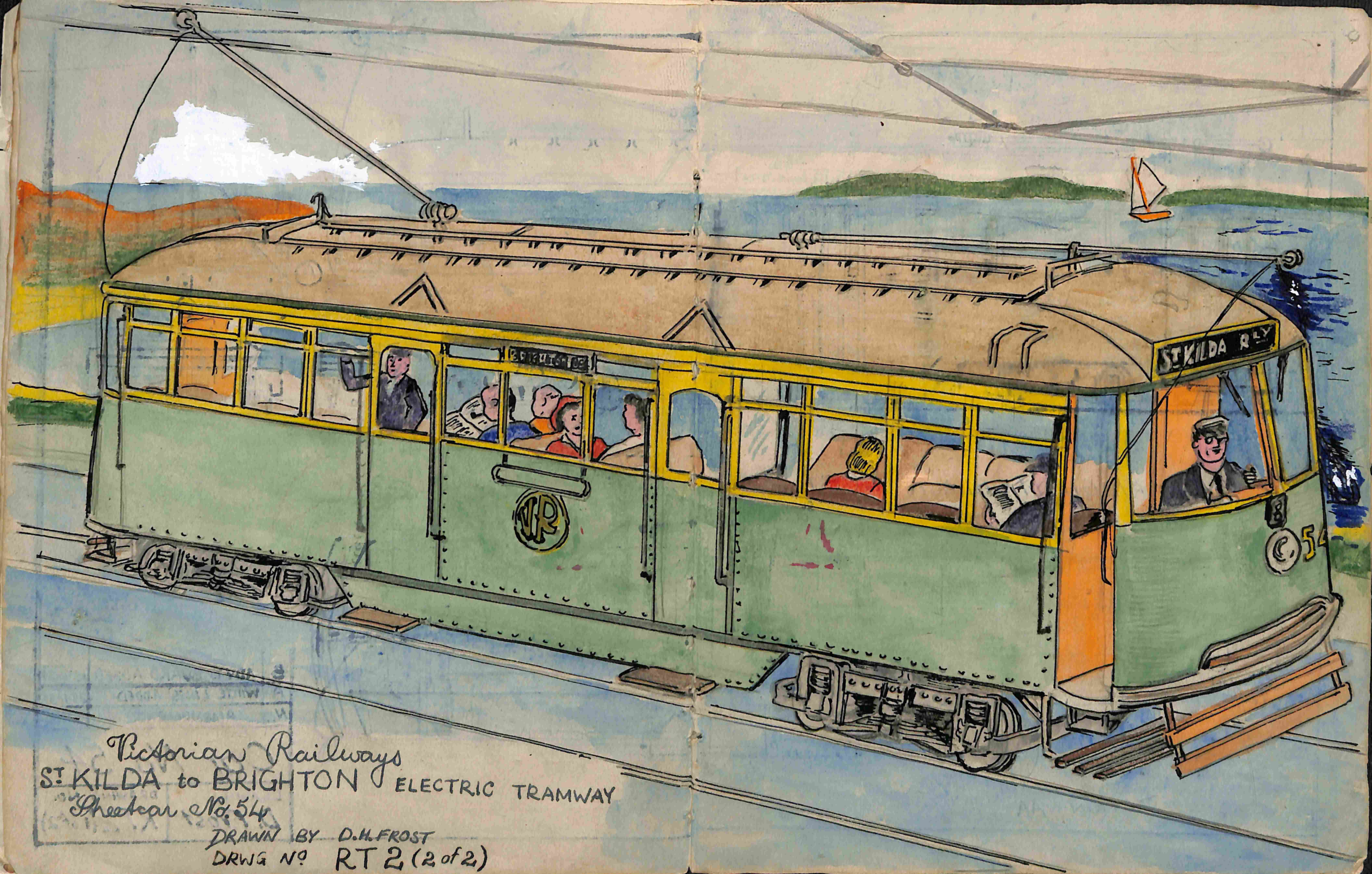


B	ADVT. BOARD ADDED	13-6-57
A	WHITE LINES ADDED	20-11-55
NO	AMENDMENT	CHANGE MADE

Car No. 54.

DRAWN:	DRAWING NO.
D. Frost	RT2(1 of 2)

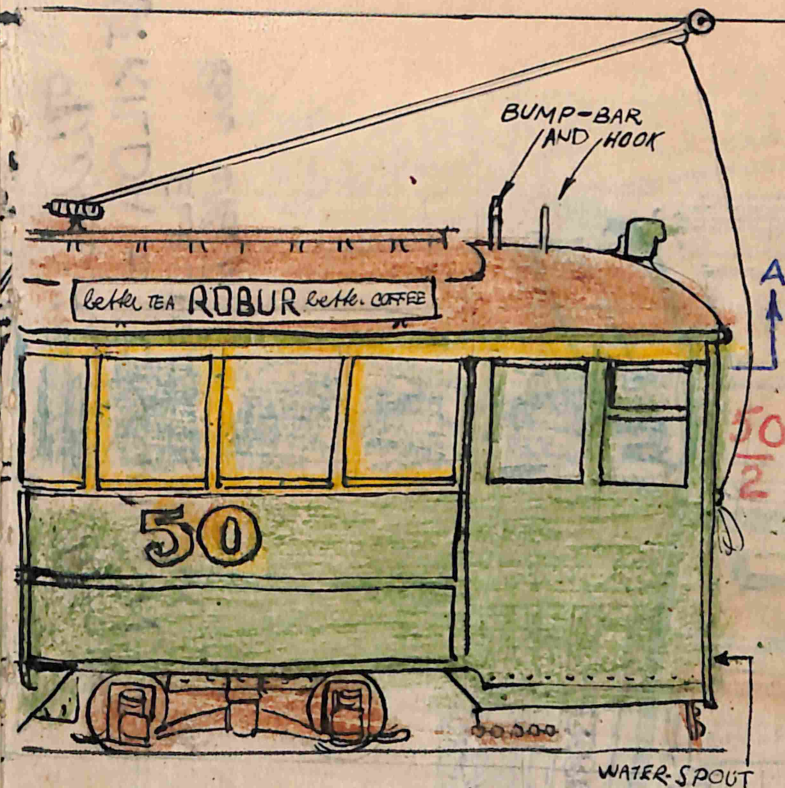
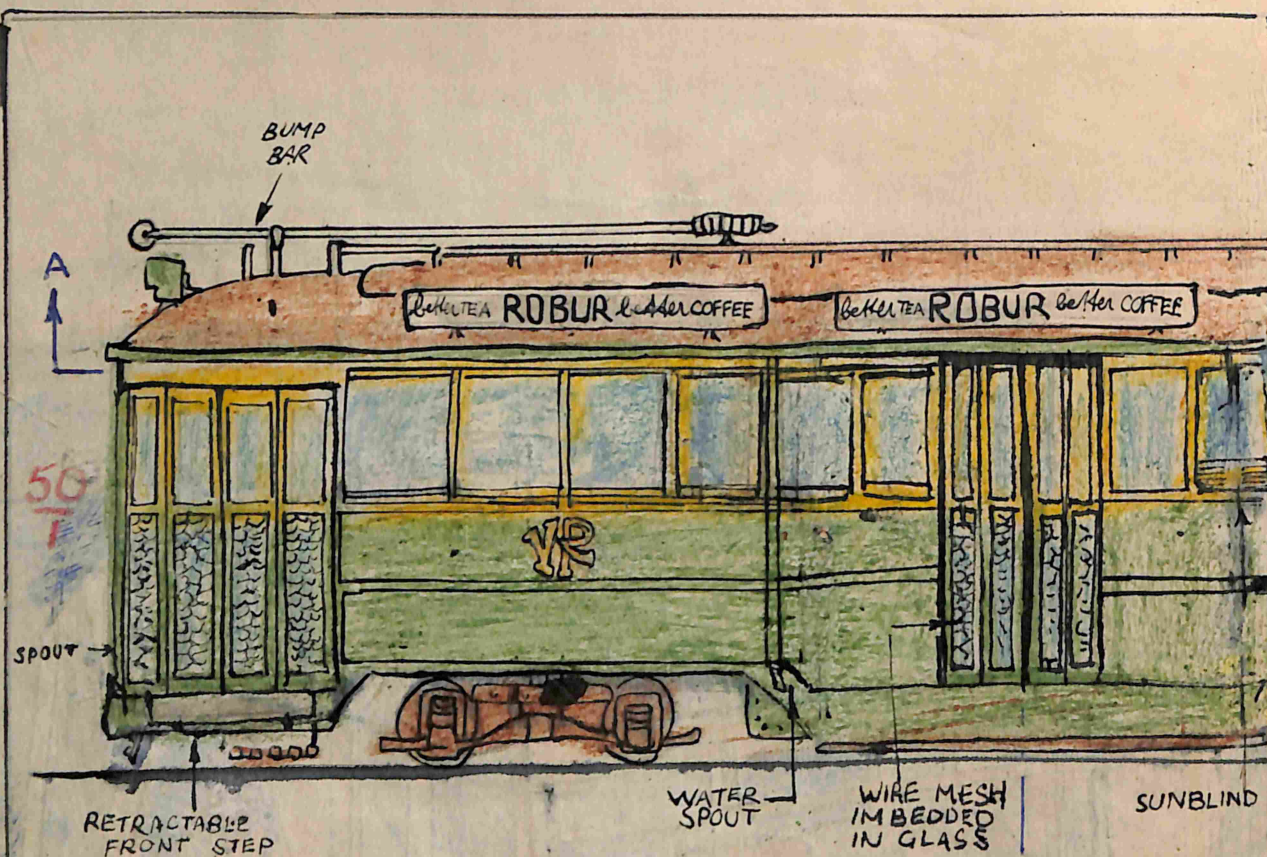




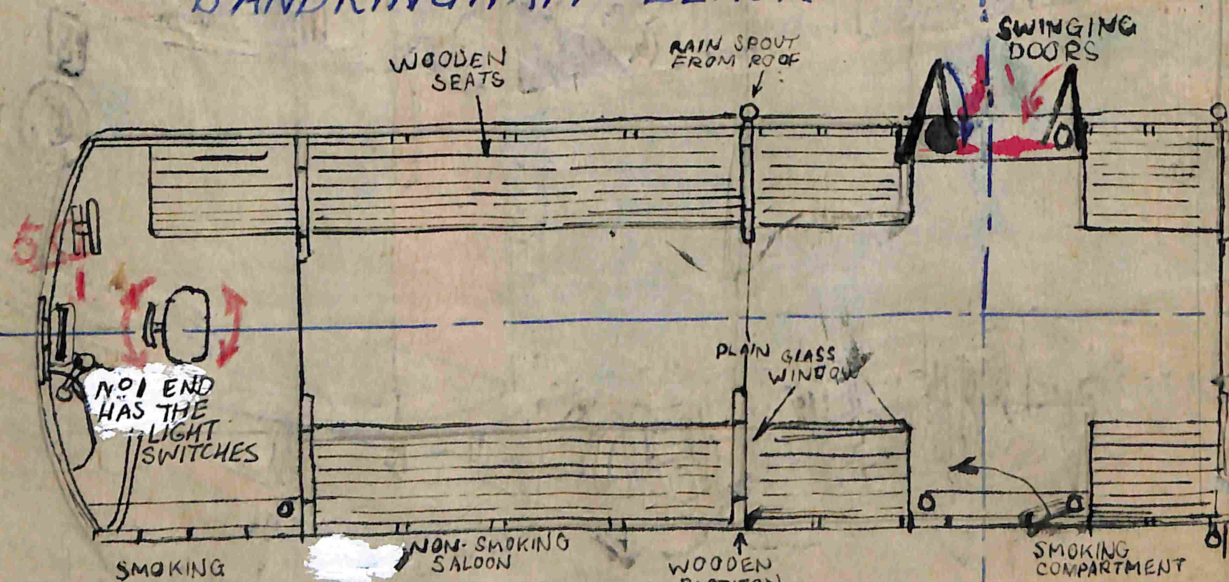
Victorian Railways  
ST KILDA to BRIGHTON ELECTRIC TRAMWAY  
Sheets No. 54

DRAWN BY D.H. FROST  
DRWG NO RT 2 (2 of 2)

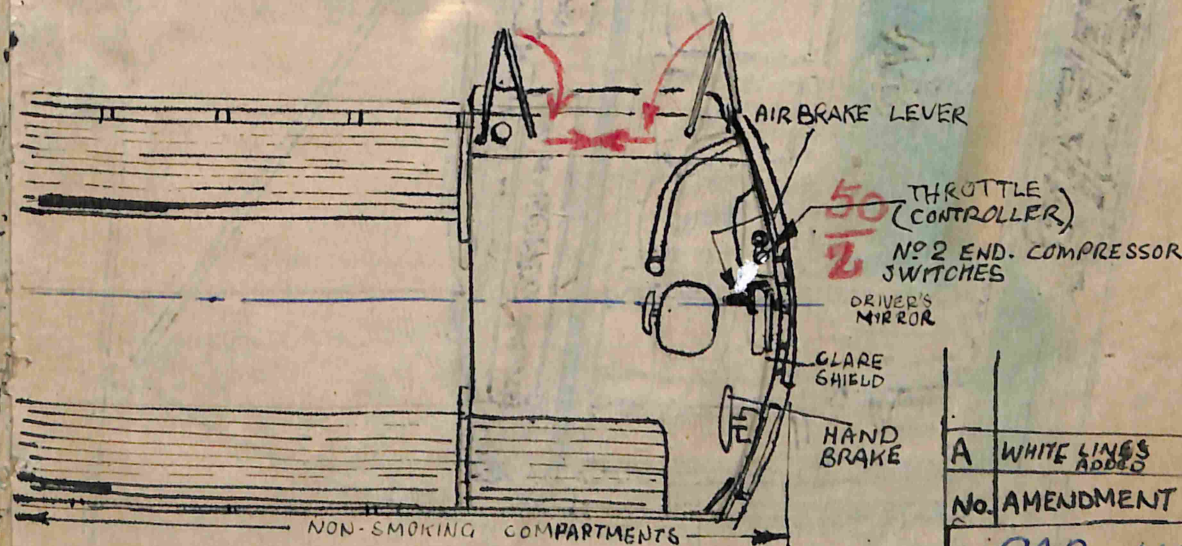




## SANDRINGHAM - BLACK ROCK ELECTRIC TRAMWAY



SECTION AA



A	WHITE LINES ADDED	1-11-55
No.	AMENDMENT	CHANGE MADE
CAR No. 50		
DRAWN	DRWG	
D.H.F.	No. RT3	
DATE	APRIL 1, 1955	



Frederian Railways  
ST KILDA TO BRIGHTON  
ELECTRIC TRAMWAY  
Car No 7

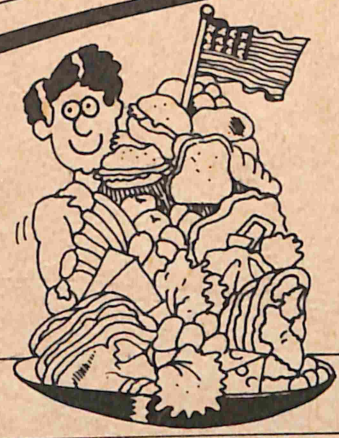


DAVID TROST

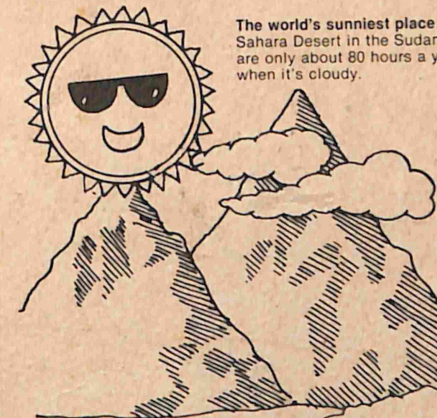
# Some facts & figures



An Indian farmer eats about 600g of food a day. This includes 480g of rice, 2g of meat and dairy foods.



An American worker eats about 2,100g of food a day. This includes 325g of bread and potatoes, 900g of meat and dairy foods.



The world's sunniest place is the Sahara Desert in the Sudan, there are only about 80 hours a year when it's cloudy.

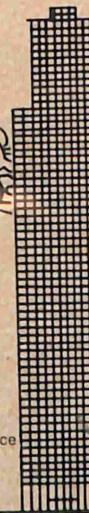
The highest mountain is Mount Everest in the Himalayas, Nepal. It is 8,848m high.



The largest shipbuilder in the world is Japan which makes 18 million tonnes of shipping a year. (Which is equivalent to 51 large tankers).



Who has the most cars?  
America has the biggest number with over 107 million. West Germany is next with 18 million.

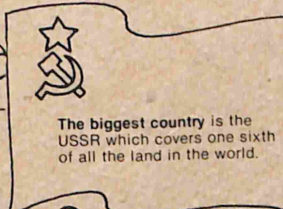


The world's tallest building is the Sears Roebuck and Co. office in Chicago, which is 443m high.

The largest desert is the Sahara which covers an area of 8,400,000 sq. km. It is nearly as big as the USA.



The most populated country is China with 860 million people.



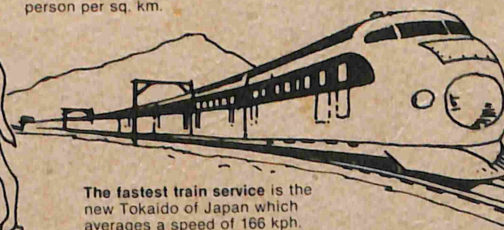
The biggest country is the USSR which covers one sixth of all the land in the world.



The wettest country is Colombia in South America with a rainfall of 4,099mm a year.



The emptiest countries are Libya, Mauritania and Mongolia with only one person per sq. km.



The fastest train service is the new Tokaido of Japan which averages a speed of 166 kph.



The tallest tree in the world is a Coast Redwood in California, USA. It is 111.6m high, over 63 times taller than a man.

Above text and illustrations reproduced from the Instant Answer Book of Countries by permission of Rigby Publishers Limited.